

**Grey Sauble Conservation Authority
Keppel Forest Management Area - Compartment 78
Pine Thinning Tender – GSC-18-03**

Location: Lot 7, Concession 19,
Township of Georgian Bluffs (formerly Keppel Township)
Grey County
Marked Area: 21 acres
Trees are marked with Orange paint

Summary:

Tree Species	Trees Marked	Average Diameter (inches)	Volume (cords)
White Pine	1295	9 inches	140 cords

- Volumes are estimated as gross merchantable and are not guaranteed.

Conditions:

- Contract shall run from February 19, 2019 until March 31, 2020. Operation must be paid for in full and completed by March 31, 2020, unless otherwise agreed to by the Authority.
- No forest products shall be removed until the full Agreement price has been paid, unless otherwise agreed to by the Authority
- No harvesting between April 1st and July 31st.
- WSIB certificate and proof of liability insurance must be shown before any operations can begin.
- Highest or any tender not necessarily accepted.

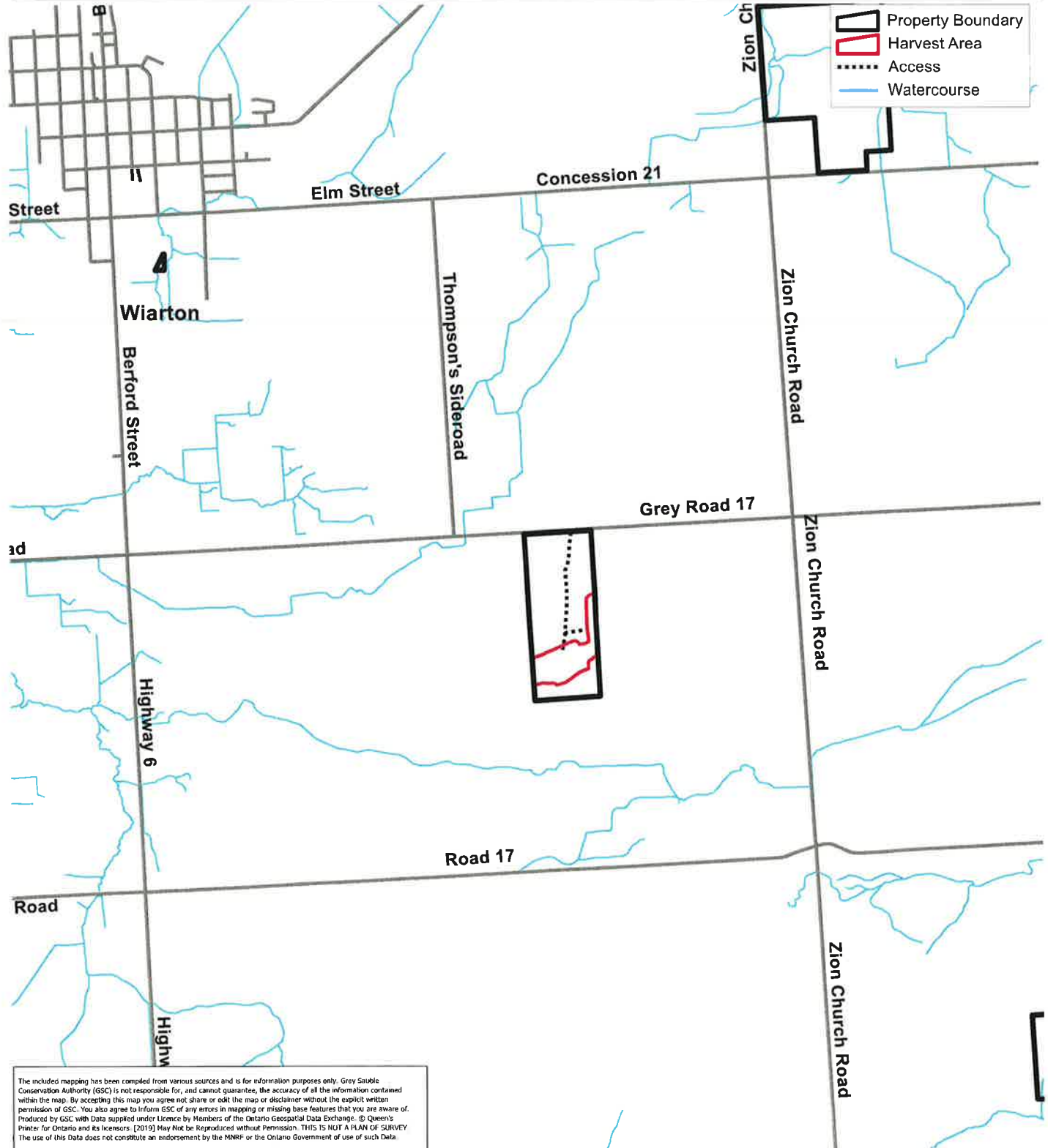
See map on reverse for directions to the property.
Contact Cam Bennett at 519-376-3076 ext. 225 for more details

Tender Closing Date

Friday February 15, 2019 at 3:30 PM



Grey Sauble Conservation Authority
 Keppel Forest Management Area - Compartment 78
 Lot 7, Concession 19
 Township of Georgian Bluffs (formerly Keppel Township)
 Grey County
 Area: 21 acres



The included mapping has been compiled from various sources and is for information purposes only. Grey Sauble Conservation Authority (GSC) is not responsible for, and cannot guarantee, the accuracy of all the information contained within the map. By accepting this map you agree not share or edit the map or disclaimer without the explicit written permission of GSC. You also agree to inform GSC of any errors in mapping or missing base features that you are aware of. Produced by GSC with Data supplied under licence by Members of the Ontario Geospatial Data Exchange. © Queen's Printer for Ontario and its licensors. [2019] May Not be Reproduced without Permission. THIS IS NOT A PLAN OF SURVEY. The use of this Data does not constitute an endorsement by the MNRFP or the Ontario Government of use of such Data.

