

Sydenham Forest – Compartment 164

Concession 6, W Pt Lot 22, (former Sydenham Township), Municipality of Meaford, Grey County

Sydenham Forest Compartment 164 will be closed starting January 8, 2019 and anticipated to be reopened March 15, 2019 due to a scheduled stand improvement operation.

As the Bruce Trail passes through this property, the Main Trail will be closed on the property but the Side Trail (blue blaze) along the roadway will continue to be open.

The goal of Grey Sauble Conservation Authority's (GSC) Forest Management Program is to maintain healthy, diverse forest ecosystems which will provide many environmental, ecological, social and cultural benefits. The harvest operation, identified in our Forest Management Plan, will involve removal of trees to improve and maintain the health of the residual forest. The trees to be removed are carefully selected based on their vigour and quality. Wildlife habitat features such as stick nests, cavity trees and mast trees area retained to provide food and shelter for wildlife.

Wood from this harvest will provide lumber, renewable energy and firewood. Revenues generated by this operation support the conservation efforts of GSC and the local economy.

The forests owned and managed by Grey Sauble Conservation Authority have achieved Forest Stewardship Council (FSC® C018800) through the Eastern Ontario Model Forest's (EOMF) Forest Certification Program. The results of this stand improvement operation will be a healthy, diverse ecosystem that provides forest products, valuable wildlife habitat and recreational opportunities for the residents of our watershed.

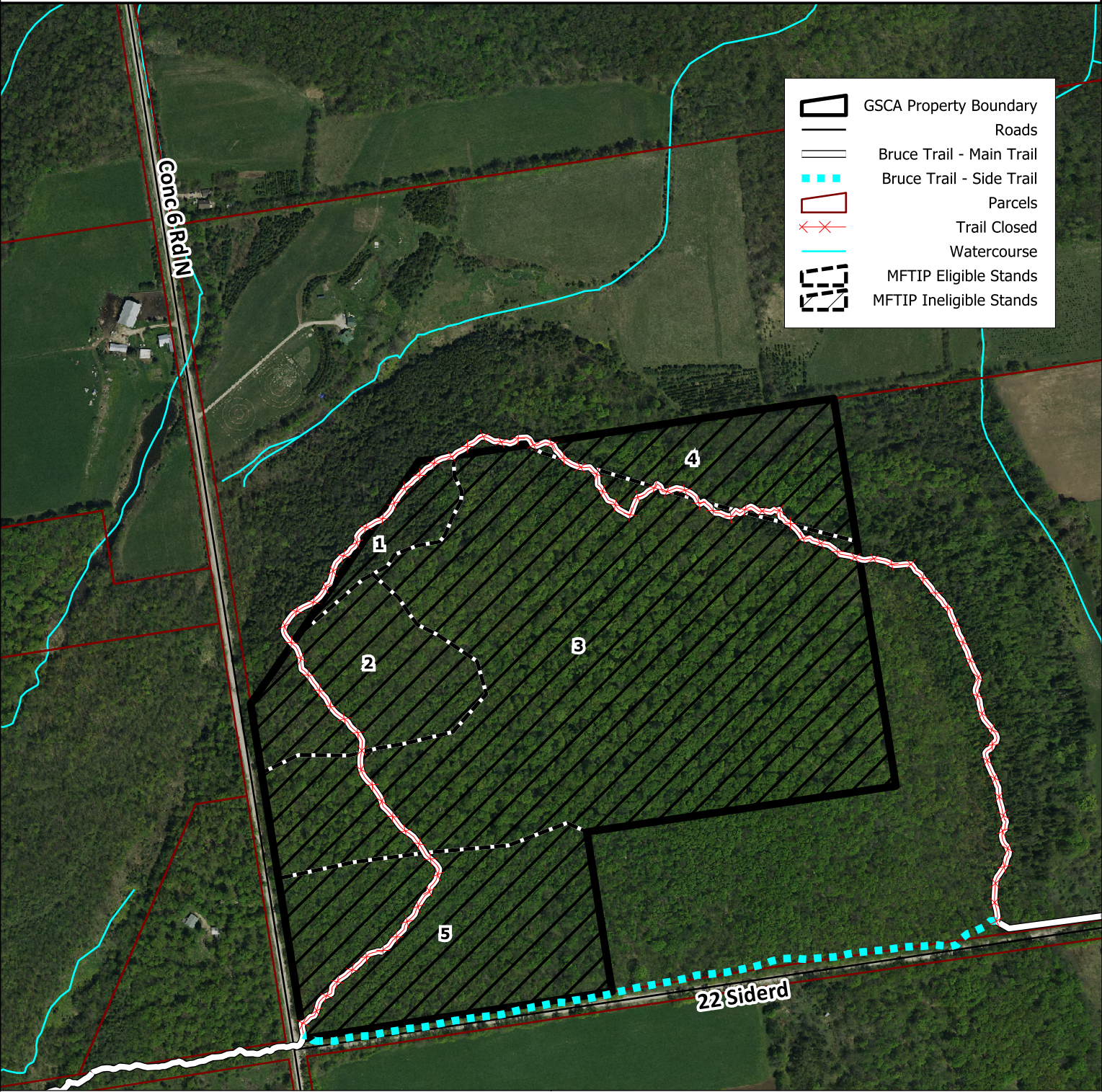
This operation is consistent with GSC's mandate to further the conservation, restoration, development and management of natural resources.

For further information about this closure and the stand improvement operation please contact GSC at 519-376-3076.



Grey Sauble Conservation Authority
Compartment 164: Sydenham Forest

Assessment Roll #	Lot	Concession	Municipality	Former Twp	County
421051000830900	W PT. 22	6	Municipality of Meaford	Sydenham	Grey



The included mapping has been compiled from various sources and is for information purposes only. Grey Sauble Conservation Authority (GSC) is not responsible for, and cannot guarantee, the accuracy of all the information contained within the map. By accepting this map you agree not share or edit the map or disclaimer without the explicit written permission of GSC. You also agree to inform GSC of any errors in mapping or missing base features that you are aware of. Produced by GSC with Data supplied under Licence by Members of the Ontario Geospatial Data Exchange. Includes Material [2018] of the © Queen's Printer for Ontario and its licensors. All rights reserved. May Not be Reproduced without Permission. THIS IS NOT A PLAN OF SURVEY. The use of this data does not constitute an endorsement by the MNR or the Ontario Government of use of such Data. This mapping contains products of the South Western Ontario Orthophotography Project (SWOOP). These images were taken in 2010 at 20 cm resolution. They are the property of Grey Sauble Conservation.