

## Hepworth Management Area – Compartment 111

Concession 2 SCD, Part Lot 28, (former Keppel Township), Township of Georgian Bluffs, Grey County

Hepworth Management Area (Compartment 111) will be closed for a scheduled plantation (pine) thinning operation starting on August 1, 2022 until further notice.

All trails on this property will be closed to ensure the public's safety.

The goal of Grey Sauble Conservation Authority's (GSCA) Forest Management Program is to maintain healthy, diverse forest ecosystems which will provide many environmental, ecological, social and cultural benefits. The harvest operation, identified in our Forest Management Plan, will involve removal of trees to improve and maintain the health of the residual forest. The trees to be removed are carefully selected based on their vigour and quality. Wildlife habitat features such as stick nests, cavity trees and mast trees area retained to provide food and shelter for wildlife.

Wood from this harvest will provide lumber, renewable energy and firewood. Revenues generated by this operation support the conservation efforts of GSCA and the local economy.

The results of this pine thinning operation will be a healthy, diverse ecosystem that provides forest products, valuable wildlife habitat and recreational opportunities for the residents of our watershed.

This operation is consistent with GSCA's mandate to further the conservation, restoration, development and management of natural resources.

For further information about this closure and the stand improvement operation please contact GSCA at 519-376-3076.

---

### Member Municipalities

Municipality of Arran-Elderslie, Town of the Blue Mountains, Township of Chatsworth, Township of Georgian Bluffs, Municipality of Grey Highlands, Municipality of Meaford, City of Owen Sound, Town of South Bruce Peninsula

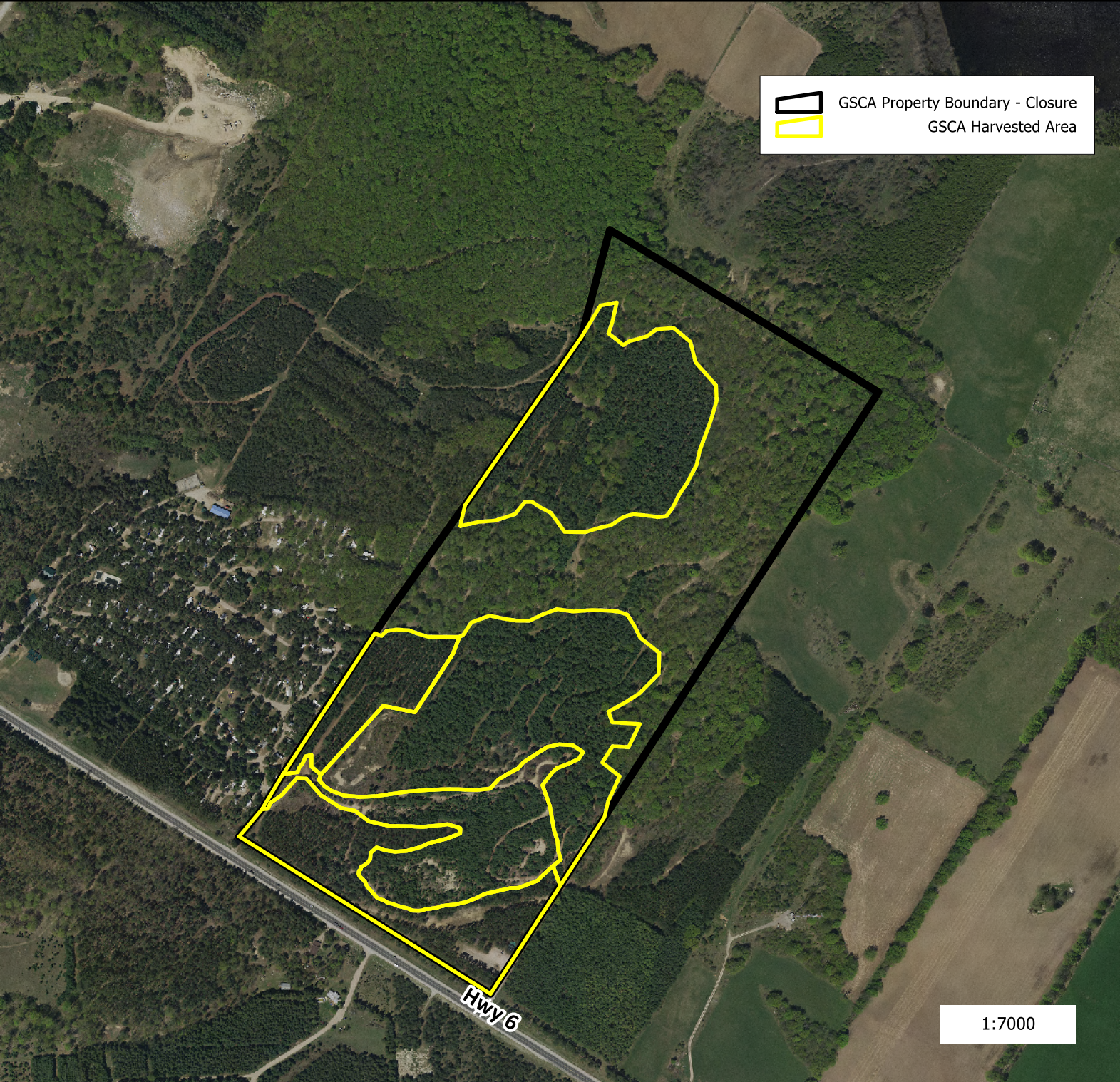




**Appendix A**  
**Hepworth Management Area - Compartment 11**  
**Proposed Harvest Areas**



Assessment Roll #	Lot	Concession	Municipality	Former Twp	County
420362000300700	PT. 28	2 SCD	Township of Georgian Bluffs	Keppel	Grey



The included mapping has been compiled from various sources and is for information purposes only. Grey Sauble Conservation Authority (GSC) is not responsible for, and cannot guarantee, the accuracy of all the information contained within the map. By accepting this map you agree not share or edit the map or disclaimer without the explicit written permission of GSC. You also agree to inform GSC of any errors in mapping or missing base features that you are aware of. Produced by GSC with Data supplied under Licence by Members of the Ontario Geospatial Data Exchange. Includes Material [2022] of the © Queen's Printer for Ontario and its licensors. All rights reserved. May Not be Reproduced without Permission. THIS IS NOT A PLAN OF SURVEY. The use of this Data does not constitute an endorsement by the MNR or the Ontario Government of use of such Data. This mapping contains products of the South Western Ontario Orthophotography Project (SWOOP). These images were taken in 2010 at 20 cm resolution. They are the property of Grey Sauble Conservation.