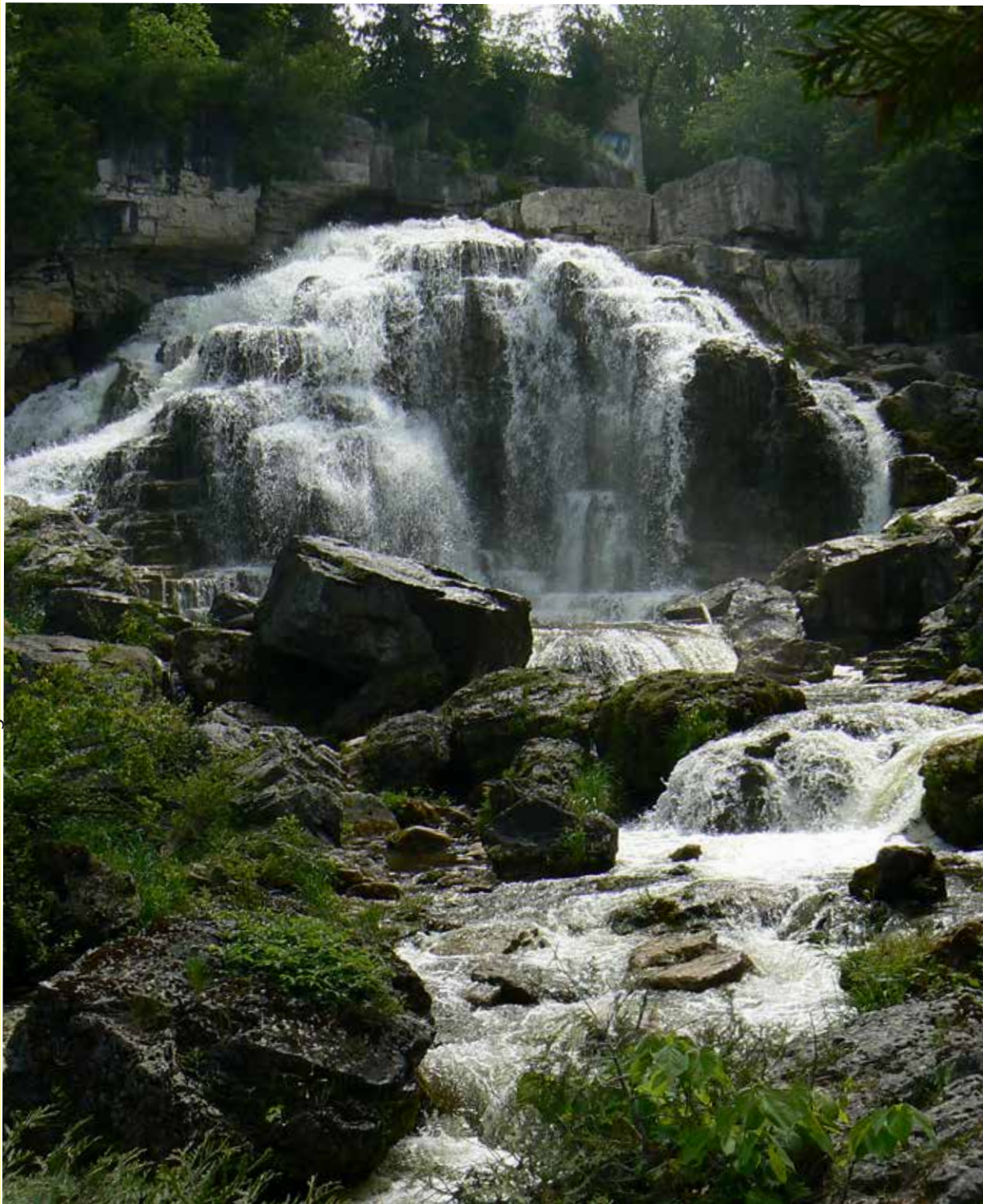


Grey Sauble Conservation

2012 Annual Report

www.greysauble.on.ca

Inglis Falls Conservation Area



Grey Sauble Programs

Water Management & Water Monitoring
Geographic Information Systems
Environmental Planning
Land Management
Forest Management
Community Relations - Information and Education
Grey Sauble Conservation Foundation
Drinking Water Source Protection



Grey Sauble Conservation 56 years old!

Interesting Facts

- Formerly called, North Grey Region and Sauble Valley Conservation Authorities. Established in 1957 and 1958.
- First property acquisition was March 5, 1958 - 53 acres purchased for \$350.00 in Little Germany, Town of The Blue Mountains. Today, Grey Sauble Conservation owns over 11,400 hectares (28,000 acres) of property to explore.
- Grey Sauble Conservation covers 3,146 square kilometres (1,215 square miles), encompassing all or part of eight municipalities in the Counties of Bruce and Grey and extends along 155 kilometers (96 miles) of Lake Huron and Georgian Bay shoreline.
- Grey Sauble Conservation watershed includes five major watersheds: Sauble, Pottawatomi, Sydenham, Bighead and Beaver Rivers.
- Grey Sauble Conservation properties are divided into 3 classifications:

1. *Conservation Areas* - 881 hectares (2,176 acres) provide outdoor recreation opportunities offering: wash-room facilities, picnic tables, shelters and parking. These areas feature: beautiful vistas such as waterfalls, caves, trails, historical sites and beaches.

2. *Management Areas* - 10,481 hectares (25,899 acres) These areas are managed for forest management, fish and wildlife, recreation and watershed protection. Facilities found at some of these management areas are: trails, boardwalks, washroom facilities and parking.

3. *Nature Preserves* - There are five nature preserves 86 hectares (213 acres). These properties are unmanaged to protect them against further development and to protect sensitive features.

2012 Staff

John Cottrill, Chief Administrative Officer
 Margaret Johnston, Finance Coordinator
 Doreen Robinson, Administrative Assistant
 John Bittorf, Water Resources Coordinator
 Andy Sorensen, Environmental Planning Coordinator
 Tim Lanthier, Watershed Planner
 Ashley Wilcox, Environmental Planning Technician (Oct.)
 MacLean Plewes, Planning Technician (replaced Ashley)
 Sarah Stephenson, Planning Technician (Sept.)
 Vicki Rowsell, Planning Technician (replaced Sarah)
 Gloria Dangerfield, GIS Specialist
 Krista McKee, Community Relations Coordinator
 Anne Lennox, Forestry & Wildlife Coordinator
 Carl Sadler, Grey County Tree Cutting By-law Officer/
 Forestry Technician
 Cam Bennett, Forestry Technician
 Chris Hachey, Lands Management Coordinator
 Lee Thurston, Resources Technician
 Terry Belton, Field Superintendent
 Jason Traynor, Assistant Field Superintendent

Administration Centre - 237897 Inglis Falls Road
 R.R.#4, Owen Sound N4K 5N6
 Phone 519 376-3076 Fax 519 371-0437
www.greysauble.on.ca



To view our property map, go to: www.greysauble.on.ca/publications/downloadable/property_map_2006.pdf

The Grey Sauble Conservation watershed is comprised of 8 municipalities. Each municipality appoints one or two representatives to our Board of Directors. The appointment is based on municipal population, under 10,000 - one representative is appointed, and more than 10,000, but less than 50,000 population - two representatives are appointed to the Board of Directors.

Board of Directors

Arran-Elderslie	Ross Herron
Chatsworth	Terry McKay
Grey Highlands **	Dave Clarke
Georgian Bluffs	Judy Gay
Georgian Bluffs	Robert Lennox
Meaford	Harley Greenfield
Meaford	Mike Poetker
Owen Sound *	Dick Hibma
Owen Sound	Ian Boddy
South Bruce Peninsula	Paul McKenzie
Town of The Blue Mountains	Michael Martin
* Chair ** Vice Chair	

Committees

Forestry	Biennial Tour
Dick Hibma	Dick Hibma
Ross Herron	Bob Lennox
Dave Clarke	Judy Gay
Bob Lennox	Harley Greenfield
Mike Poetker	
Judy Gay	
Terry McKay	

Sub-Committees of Grey Sauble Conservation Board of Directors

Arboretum Alliance

Jack Westlake, Chair
 Brian Murray
 Don Knight
 Nancy Brown
 Rodney Saunders
 Merle Gunby
 Peter Smith
 Jim Hastie
 Cecilie Moses
 Bill Moses
 Murray Peer
 Chris Hachey
 Inglis Phinney

Beaver River Watershed Initiative

T.E.S. Hynes, Chair
 T. Kennedy
 G. Powell
 A. Maxwell
 J. Gibbons
 J. Morgan
 D. Galloway
 E. Burtynsky
 A. Lockhart
 A. McKee

Foundation

Don Knight, Chair
 Judy Gay, Vice Chair
 Ed Barker, Treasurer
 Peter Reesor (resigned Oct.)
 Marg Gaviller
 Bruce Calvert
 Merle Gunby
 Cliff Keeling
 Don Sankey
 Christine Silvester
 Harley Greenfield
 Colleen Walker
 Janice Collins
 Terry McKay
 Chris Hachey

Photos on Front Page Top to Bottom

Photo 1 - Jack Westlake, Arboretum Alliance, assisting with the Grade 3 Education Program "Trees of the World"

Photo 2 - Niagara Escarpment Commission presenting Grey Sauble Conservation with the Niagara Escarpment Achievement Award

Photo 3 - Board of Directors Meeting with Vice Chair Dave Clarke (left), Chairman Dick Hibma (centre), CAO John Cottrill (right)

Photo 4 - Yellow Fish Road Program, stencilling "Rainwater Only" on Storm Drains in Grey Sauble Conservation's jurisdiction

Water Management

Haines Dam

Temporary repairs completed in 2009 appear stable and further erosion of the north berm has not occurred as a result of the leakage through the north abutment. In 2011, Grey Sauble Conservation (GSC) held an open house in Clarksburg to initiate feedback from the local community regarding the removal of the dam located on the Beaver River. GSC did not receive any negative comments regarding the removal and most were very supportive of the direction we were taking. In 2012, GSC continued the process to have the dam removed. Unfortunately, the project is held up in the permitting process and the funding is not available to complete this project in the very near future.

Owen Sound Mill Dam

Inspections of the dam have revealed several areas of the structure where concrete has failed. The concrete abutment between the two main sluiceway gates has begun to break away resulting in a leak of water through the concrete. Further deterioration may interfere with our ability to operate the main gates. Concrete has also broken away around the railings in several locations and surface erosion of the concrete in the spillways has occurred in several locations.

In 2010, the consulting firm Genivar was contracted to assess the concrete condition of the dam. This assessment determined that the Mill Dam requires immediate concrete repairs. This past year, Genivar has continued to work on the project and has prepared tender ready design drawings. Permits are ready to be issued as soon as funding is available to complete the work.

Additional work was completed this past summer on the Mill Dam Raceway. Due to the importance of this area for the salmon egg collection program, the Sydenham Conservation Foundation (in partnership with the Sydenham Sportsmen's Association, GSC and MNR) successfully received funding from the Trillium Foundation for site improvements. This past summer, alterations were made to the raceway outfall to help stabilize the banks and provide safe access for the volunteers to the fish collection area. This fall's egg collection went very smoothly and the Sydenham Sportsmen reported that the improvements were very beneficial.

Clendenan Dam

This dam is located on the Beaver River upstream of Clarksburg. The primary purpose of the dam is to prevent flooding within the Town of Clarksburg. Over the years, trees and shrubs have established themselves within the emergency spillway for the dam. In 2012, this area was cleared of tree and shrub growth to ensure flows over the structure would not be obstructed during extremely high flow situations. This was a very tedious and labour intensive procedure as all the material had to be cut by hand. A total of 15 man-days were required to complete the work.

Taylor Street Detention Pond

In 2011, a significant hole developed in the berm on the upstream side of this stormwater detention pond (located just south of Wiarton). Further investigation determined that the steel corrugated pipe that runs through the centre of the berm has deteriorated. The bottom of this pipe was rusted through, allowing water to flow through the berm and bypass the flow control structure. This pipe needed to be replaced or lined with an appropriately sized pipe that would maintain the flow capacity of the original design of the structure.



In 2012, with the guidance of Gamsby and Mannerow Ltd and the determination of Bud Mervyn Construction Ltd, 55 metres of Streamliner pipe was installed inside of the old pipe and grouted in place. The capacity of the new smooth-walled pipe was equivalent to the original corrugated pipe. In total, the project cost \$45,000 with the Ministry of Natural Resources contributing 50%.

Ice Management

During extended cold periods throughout the winter, frazil ice may form and begin to accumulate in areas of a river where fast flowing water begins to slow down. This accumulation can be very extensive and may cause flooding as the ice dams the channel. The Beaver River channel through the Town of Clarksburg is one of these locations where this damming can occur. Fortunately, there were no extended periods of cold weather in 2012 and the river channel remained open, preventing any significant flooding.

Water Monitoring

Staff have been monitoring Grey Sauble's Watershed Health for the past 12 years.

Benthic Monitoring

Thirty sites throughout the watershed have samples collected annually using specialized nets. These samples include insect larvae, worms, crayfish and other organisms (larger than 0.5 mm) that live in the stream bed. With the aid of a microscope, staff identify these specimens and use a scoring system called "BioMap" (Biological Monitoring and Assessment Program) to evaluate the quality of the water. This protocol scores specimens based on different water quality conditions required for their survival. The presence (or absence) of some of these specimens in a sample can be used to classify water quality as good, fair or poor.



Pumping a groundwater site for a water sample



Identifying specimens for Benthic Monitoring

Surface Water and Ground Water Quality

Partnering with the Ministry of Environment (MOE), Grey Sauble monitors 10 surface water sites and 10 groundwater monitoring wells. The surface water sites are sampled 8 times each year and submitted to MOE for chemical analysis. The groundwater sites have water level loggers that are downloaded 4 times each year. In the fall, water samples were taken from each well and submitted to the Ministry of Environment for analysis of water quality.

Thermal Stream Classification

During the warm summer months, small creeks and streams should be cold and larger watercourses should remain cool. Obtaining water temperatures can help classify systems as "cold water" (support brook trout), "cool water" (brown trout, rainbow trout) or "warm water" (baitfish, bass). Staff and volunteers regularly take water temperatures throughout the watershed as part of this monitoring program.

Data Collection

Staff and volunteers collect data at each stream crossing. The presence of fish, type and size of water-crossing, description of low land use activities and other observations that describe water quality and fish habitat are all geo-referenced and recorded in a database. The data is linked to our GIS maps for easy reference. This data has proven to be a powerful tool for the review of planning and permit applications.

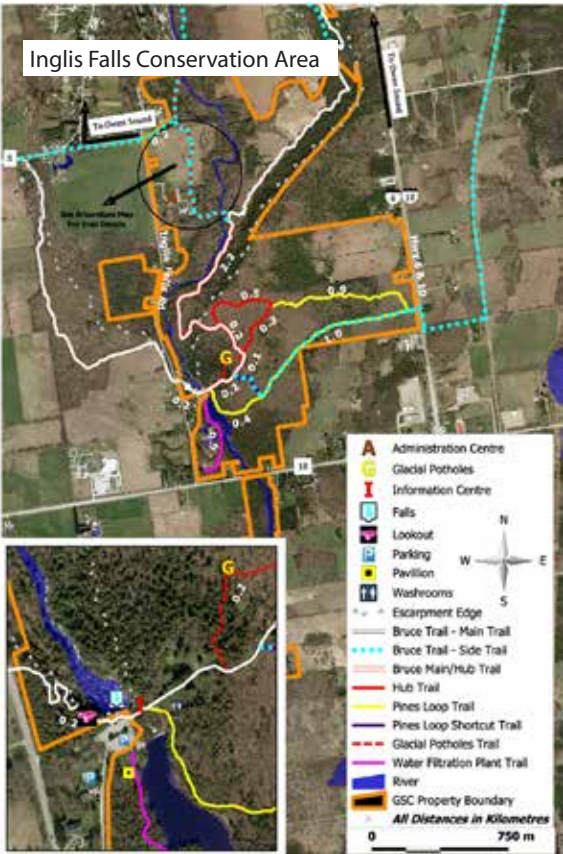
GIS (Geographic Information System)

Geographic Information Systems has become an integrated part of daily business at GSC. Using GIS, staff store, manage, display and analyze spatial information that allows them to do their jobs very efficiently.

Lands and Mapping

A revised conservation lands brochure was created using both the 2010 Orthophotography ** and trails data that was GPS'd in 2011. This was the first time the mapping has been done in-house.

Both interactive Bing maps and static brochure maps have been added to the webpage for each highlighted conservation property. The interactive maps contain the trails dataset so that users can zoom to the property and see the trails information. QR codes that link to this mapping were also added to new signage at Inglis Falls and the Arboretum.



**Orthophotography: The term Orthophotography refers to aerial photos that are spatially referenced and have been corrected for distortions from topographic relief, lens distortion and camera tilt.

Geotagged Photos Initiative

Several Garmin Montana GPS units were purchased and staff has been trained to make full use of the Geotagging abilities of these units. Geotagging allows photos to be taken with the precise coordinates being stored in the photo. The users upload their photos into the GIS and see a point on a map where each photo was taken as well as enter more information about the photo and store all of this together. The advantage to this software is that users can also click on the reference point and see the photo. This process allows for efficient photo storage, searching and cataloguing.



GIS Coordinator, Gloria Dangerfield

Shell Fueling Change

An application was submitted in 2012 and Grey Sauble Conservation was accepted into Shell's Fuelling Change program to compete for \$25,000 to go towards purchasing a 3D Mapping system.

This system will enable viewing of spatial information in 3 dimensions and create high quality elevation data and improve the base data. The contest runs until April 30th, 2013 and the project has to be in the top 8 of its grant level to win the \$25,000. Please register and vote at fuellingchange.com.



Environmental Planning

Plan Review Activities in 2012

Official Plan Amendments	13
Subdivision/Condominium Applications	3
Zoning By-law and Removal of Holding Consent	83
Niagara Escarpment Commission	83
Minor Variance	62
Pit/Quarry	3
Technical Studies and Site Plan Review	42
Site Inspection and Letter	64

Regulation 151/06 Permit Activities

Regulation Inquiries	94
Permits	344
Violation and Notice of Regulation	7



Number of Applications reviewed in our Watershed municipalities:	151/06		
	Planning	Permits	Totals
Municipality of Arran-Elderslie	7	6	13
Township of Chatsworth	18	12	30
Township of Georgian Bluffs	115	67	182
Municipality of Meaford	56	45	101
Municipality of Grey Highlands	105	68	173
City of Owen Sound	58	17	75
Town of South Bruce Peninsula	35	56	91
Town of The Blue Mountains	97	70	167
Other Applications Reviewed for Non-Member Municipalities			
- Fees Supplied by Applicants	36	3	39
Totals	527	344	871

Plan Input and Review

Environmental Planning is a preventative and consultative process that promotes healthy ecosystems and watersheds, prevents loss of life and minimizes the risk of damage to your property from flooding and erosion hazards. Under agreements with member municipalities and in consultation with county and municipal planning departments, Ministry of Natural Resources, Niagara Escarpment Commission, Ministry of the Environment, Fisheries and Oceans Canada, Grey Sauble staff review applications for consistency with the Provincial Policy Statement (PPS) under the Planning Act. The two main sections of the PPS that the Authority focuses on are 3.1 Natural Hazards and 2.1 Natural Heritage. Natural Hazards include flooding, erosion, steep slope and dynamic beach hazards. Natural Heritage features include fish habitat, significant wildlife habitat, significant woodlands, significant valley lands, provincially significant wetlands, threatened/endangered species, and Areas of Natural and Scientific Interest (ANSI). In many instances, development proposed in or adjacent to these features triggers a requirement to complete an environmental impact study. Authority staff review these reports and provide input to planning boards or committees.

Development, Interference with Wetlands and Alteration to Shorelines and Watercourses Regulation (151/06)

The regulation requires that a permit be obtained from our office if you are considering any type of proposed work on the following:

- straightening, changing, diverting or interfering in any way with the existing channel of a river, creek, stream or watercourse or interfering in any way with a wetland
- development (includes site alteration) adjacent or close to the shoreline of Lake Huron, Georgian Bay or inland lakes, in river or stream valleys, hazardous lands, wetlands or lands adjacent to wetlands

Land Management

Operation Green Sweep Celebrates

On May 9, 2012, the Niagara Escarpment Commission acknowledged the students of West Hill Secondary School in Owen Sound and staff of GSC with the Niagara Escarpment Achievement Award for 10 years of cleaning up West Rocks Conservation Area. The project, called “Operation Green Sweep”, enhances West Rocks Conservation Area to ensure the community’s enjoyment of this beautiful Escarpment landscape. Approximately 400 students participate in “Operation Green Sweep” each year. West Rocks Conservation Area is one of 140 parks located in Niagara Escarpment Park and Open Space System.



Grey Sauble Conservation Vice-Chair Dave Clarke and students of West Hill Secondary School Envirothon Team, plant a Ceremonial Tree on the front lawn to symbolize the 10th Anniversary of “Operation Green Sweep”.

Arboretum NEW Trail Extension - “Trees of Grey and Bruce”

The Arboretum is situated north of the Inglis Falls Conservation Area entrance and features 3 kilometres of trails, interpretive signage, pavilion, ample parking and opportunities to connect with other area trail systems.

The new extension of the Trees of Grey and Bruce Trail is a fully accessible 1 kilometre trail that features interpretive signage, benches and of course, trees. The project was made possible with partnership support from the Ontario Trillium Foundation, the Optimist Club of Sydenham and District, the Grey Sauble Conservation Foundation and the Arboretum Alliance. The new trail will focus on native trees and shrubs which will be labelled and planted adjacent to the trail.



Natural Choices

Grey Sauble Conservation owns, manages and maintains over 11,500 (28,000 acres) of pubic land throughout it’s area of jurisdiction. For the outdoor enthusiast, that translates into unlimited opportunities for hiking, cross country skiing, boating, picnicking, bird watching, swimming, hunting and fishing, just to name a few. With this usage, also comes garbage collection, grass cutting, trail maintenance, facility repairs, risk management checks and capital improvements.



Renovation Project

During the winter months, field staff Terry Belton and Jason Traynor undertook the construction of a water resoruces room/lab in the basement of the Administration Centre. This new room facilitates the benthic monitoring program and the ground water quality program.

Forestry

Tree Planting

Over 260,000 trees were planted in our watershed in 2012.



Trees Ontario - 50 Million Tree Program

- 43 Projects - 219,658 trees planted
- Site Preparation - frost seeding for 2 projects (14.6 ha white clover)
- Vegetation Control
 - Coco Discs - 2 projects, 3,350 discs placed around planted trees
 - Spraying - 42 projects, 210,197 trees

Management of Abandoned Aggregate Properties

- 1 project - 900 trees

Grey Bruce Forestry Services Tree Planting Program

- 1 landscape planting project - 42 trees

Over the Counter Tree Sales

- 116 Private Landowner orders - 30,671 trees

Arbour Day Tree Seedling Sale

- 5,967 trees and shrubs, 10,046 larger trees, 348 coco discs and 100 tree wraps

Landscape Stock Trees

- 55 orders - 1,905 trees

Forestry Services

Our staff provide a full range of forestry services for landowners. Services include: tree marking; tendering and contract monitoring; Manage Forest Tax Incentive Program (MFTIP) Plans for landowners to receive a reduction in land taxes and site visits. This year staff prepared 15 MFTIP Plans - 374 hectares (925 acres) in total.

Forest Management Operations



Management Area	Comp. #	Operation	Acres	fbm	Cords	Revenue
Skinner Marsh-McNab Lake	111	pine thinning	48		225	\$7,000.00
The Glen	170	pine thinning	117		862	\$39,150.00
Skidders Bluff	196	sawlogs/fuelwood	133	42,891	723	\$46,270.00
Kolapore Uplands	96	sawlogs/fuelwood	31	17,608	65	\$13,820.00
Totals			329	60,499	1,875	\$106,240.00

Forest Management Plan - 20 Year Plan

Staff prepared a Draft 20 Year Forest Management Plan for the Board of Directors to review at the December Full Authority meeting. The plan was approved in principle. Staff will be reviewing compartment stand maps and updating the mapping with the most recent 2010 aerial photography.

Community Relations - Information and Education

Corporate Promotions

Another edition of the Grey Sauble Conservation Brochure reached the tourism brochure stands. The technology of the GIS department using aerial photography, GPS coordinates and the Bruce Trail layer, will provide accurate mapping for hiking enthusiasts. The new brochure is also posted on our webpage as a downloadable pdf.

Wildwater Program - Spring Ice Water Safety Program

Grey Sauble Conservation visited 12 schools, educating 785 grade four and five students of the dangers of spring ice water. GSC staff interacts with students identifying dangerous ice conditions, hypothermia, and scenario role playing. We thank our Community Partners OPG and our local Kiwanis Club for supporting this educational program in 2012.



**ONTARIO POWER
GENERATION**
opg.com

Science Fair

Each year Grey Sauble provides a trophy and a cash prize at the Bluewater School Board Science Fair for a Grade 4 project that best illustrates the wise use of soil or water. The recipient of the 2012 Grey Sauble Award was Kayla Krauter.

Left - Kayla Krauter, Mrs. Grieve, Chairman Dick Hibma

The Great Outdoors Day Camp

Early registration provided a full summer day camp with 24 participants each day. Our staff Michael Donnelly and Rachel deJong provided hiking experiences, water activities, games, crafts, crayfish hunting, water tubing and more. Cost to attend day camp in 2012 was \$22.00 per day.

Young Naturalists Club

In 2012, 31 children registered for the Young Nats Club. The Club is for children ages 7 to 12 years old. Children under the age of 7 may attend with parent accompaniment. The 2012 activities were: snowshoeing at Bognor Marsh with a campfire, hot chocolate, and bannock; an Owl Prowl; visits to Cabot Head, Bob Gray's Sugar Bush and Mudtown with Kate McLaren and much more! Cost to join the Young Naturalists Club was \$30.00 per family.

Grey Bruce Children's Water Festival

The three-day event in September was open to Grade 4 students in Grey and Bruce Counties. Approximately 1,200 students took part in exploring over 40 hands-on activities and learning about water. This event relies on sponsorships and over 150 volunteers to assist with the event.

Yellow Fish Road Program

Grey Sauble Conservation joined with Trout Unlimited Canada's Yellow Fish Road Program. The program relies on volunteers to paint yellow fish symbols next to storm drains and distribute fish-shaped brochures to nearby households reminding people that anything that enters in a storm drain goes directly into our streams. This year OSCVI students and Adam Dyer and his friends took to the streets in Owen Sound and Southampton to paint yellow fish on storm drains!

Bruce Grey Forest Festival

In October, this three-day event took place in the Allan Park Management Unit. Approximately 900 Grade 7 students participated in forest activities exploring ecosystems, resource management and sustainability, biodiversity, species at risk and stewardship. Many displays were also on site: Ontario Hydro Forestry Department, reptiles, birds of prey and a portable saw-mill. A Big Thank You to all the volunteers that make this event happen!



Canadian Raptor Conservancy staff with a Barn Owl at the Bruce Grey Forest Festival



Conservation Authority Biennial Tour

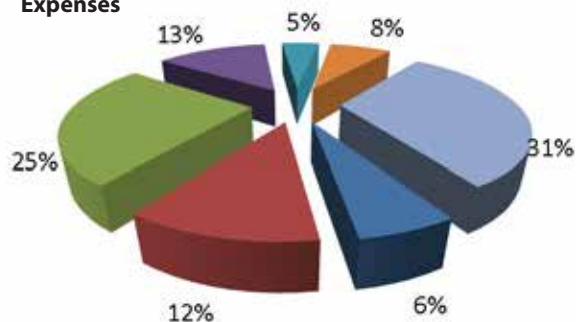
Grey Sauble and Saugeen Conservation hosted the 2012 Biennial Tour showcasing our watersheds to 63 delegates from Conservation Authorities across Ontario. The event provided an excellent resource of networking for staff, municipal councillors and mayors.

Interpretive Signs

Seven signs were designed in-house for the Arboretum's final phase of "The Trees of Grey and Bruce" accessible trail. Approximately \$7,000 of the \$20,000 trail project was spent on interpretive signs. To view the new signs, visit the Arboretum located just north of the GSC Administration Centre.

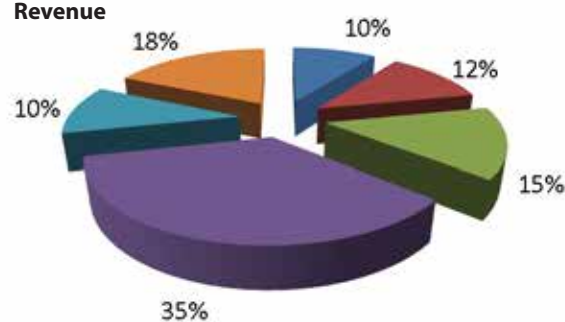
Finance & Administration

Expenses



Water Management	6%	\$193,651
Environmental Planning	12%	\$374,681
Forestry Management	25%	\$809,649
Land Management/Conservation Properties	13%	\$424,907
Information & Education	5%	\$146,242
Administration	8%	\$238,559
Capital Projects/Reserves	31%	\$1,003,860
Total		\$3,191,549

Revenue



Grants	10%	\$316,439
Trees Ontario	12%	\$375,000
User Fees	15%	\$460,800
Municipal Levy	35%	\$1,126,843
Other Revenue	10%	\$332,100
Reserves	18%	\$580,367
Total		\$3,191,549



The Grey Sauble Conservation Administration Centre is located on 237897 Inglis Falls Road, just south of Owen Sound. Our office hours are: 8:30 am - 4:30 pm Monday to Friday
Phone 519 376-3076 Fax 519 371-0437
www.greysauble.on.ca

Grey Sauble Conservation Foundation

The Foundation is a Registered Canadian Charity that raises funds to support Grey Sauble Conservation, its policies and activities that protect natural habitats, and its efforts to enhance biodiversity and environmental awareness.



Environmental Scholarship

Chair Don Knight, (right) presented the \$1,000 Environmental Scholarship to Erik Wagenaar of West Hill Secondary School. Erik is pursuing his secondary school education in the Honours Geography and Environmental Management Program at the University of Waterloo.



Conservation Trust Fund

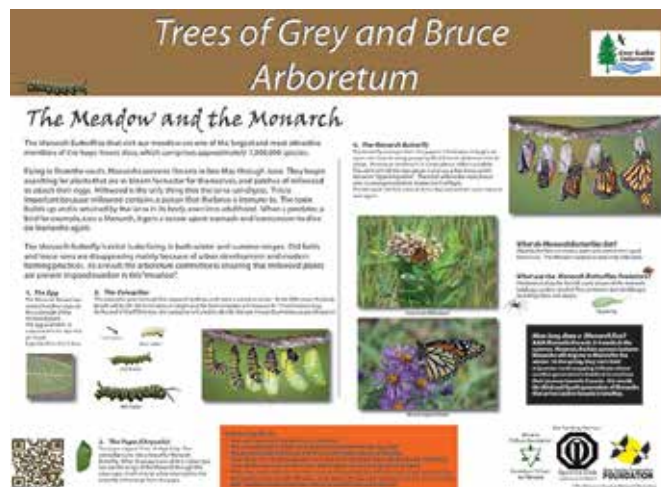
Donations to the Trust Fund continue to grow over the past 19 years. The principal amount is never touched and the interest generated is given each year to Grey Sauble Conservation in support of their projects. You can also donate on line to the Grey Sauble Conservation Foundation through the "CanadaHelps.org" website.

Memorial Forest

Plant a tree in memory of a loved one. You can purchase a tree for \$50.00 and choose one of three planting sites - Pottawatomi Conservation Area, Big Mud Lake Management Area and Grierville Management Area. Each year we host a Commemorative Ceremony at the Grey Sauble Conservation Administration Centre to recognize all those who have had a tree planted in their memory.

A Helping Hand for Arboretum Trail

The last phase of the trail development and interpretive sign installations for the "Trees of Grey and Bruce" received a helping hand. An Anonymous donation of \$10,000 was received to finalize the interpretive signs and the benches for the trail project.



Cheque Presentation

Christine Silvester, BMO Bank of Montreal, presents a cheque for \$500 to Chair Don Knight. Christine has been a valued member of the Foundation since 2010. The cheque from BMO Financial Group is in recognition of Christine's employee engagement in the Volunteer Grants Program.



Drinking Water Source Protection means protecting local drinking water sources from both contamination and overuse. Protecting the sources of our drinking water ensures that there is enough clean water for all of us. Good, clean water is something we all need; it is critical to our lives.

Source Protection Plan

www.waterprotection.ca

The Source Protection Committee achieved an important milestone in 2012 with the submission of the Proposed Source Protection Plan (PSPP) to the province. The PSPP contains a series of policies that, when implemented, will help to manage activities that could pose a risk to drinking water sources.

The Draft Proposed Source Protection Plan (DPSPP) consultation period ran from April 5-May 9, 2012. The following occurred during that period:

- Plan was posted on the program website
- Media release was sent to all local media outlets
- Public notices were placed in local newspapers
- Hard copies were made available at local Source Protection Authorities
- Hard copies were sent to Ontario Government Ministries, local First Nations, neighbouring Source Protection Authorities, upper and lower-tier municipalities, and conservation authorities
- Over 3000 information packages were mailed to landowners affected by policies
- Five public meetings were held throughout the region
- A tabloid publication was inserted in local newspapers
- Local radio ads aired

The Source Protection Committee reviewed all comments and made revisions to the document. The PSPP was then approved at their May 25, 2012 meeting and its consultation period ran from June 4-July 3, 2012. The PSPP consultation included the same type of postings, notices and distribution as the DPSPP consultation. In addition, notices were sent to landowners who commented on the DPSPP.

The PSPP was submitted to the Ministry of the Environment (MOE) on August 8, 2012. Ministry approval of the Plan is anticipated in the latter part of 2013.

Source Protection Plan Municipal Implementation

It is important for municipalities to begin planning for the implementation of the Source Protection Plan (SPP) policies for which they will be responsible, as implementation must begin the day the SPP comes into effect.

The Drinking Water Source Protection program hosted two local workshops in November 2012 regarding SPP implementation. The workshops were well-attended by municipal councilors and staff and topics of discussion included municipal roles and responsibilities,



risk management plans and reporting requirements. An implementation guide was also distributed to each municipality and follow-up sections will be added as they are completed.

The Drinking Water Source Protection office can be of assistance by providing information to municipalities related to SPP implementation. Staff members have already made presentations to local councils upon request.

Ontario Drinking Water Stewardship Program - Early Response

The Early Response Program (under the Ontario Drinking Water Stewardship Program) was launched in 2011 and continued through 2012. The program was aimed at local landowners so that they could complete projects to reduce threats to municipal drinking water. As of December 2012, over \$275,000 in grants was distributed locally to eligible landowners. The types of projects completed were septic system upgrades, manure storage facilities, well upgrades, and fuel and chemical storage.

2012 Source Protection Committee

Mike Traynor, Chairman

Kathie Hughes, Mitch Twolan, Les Nichols, Ken Furlong, Bill Twaddle, Dr. David Biesenthal, Robert Emerson, Brent Lanktree, Carolyn Parker, Mark Kraemer, Dale Thompson, Les MacKinnon, Lou D'Alessandro, Bruce Davidson, Carolyn Day



2013 at a Glance

Earth Day & Arbour Day

April 22, 2013

April 26, 2013



Annual Tree Seedling Sale

Saturday, April 27th, 2013

8:00 am - 12:00 noon

Species Available

butternut, white birch, black cherry, black locust, sugar maple, red maple, silver maple, red oak, bur oak, white oak, hybrid poplar, black walnut, balsam fir, fraser fir, white cedar, eastern hemlock, austrian pine, white pine, red pine, white spruce, norway spruce, colorado blue spruce, tulip tree, sycamore, nannyberry, american highbush cranberry, black elderberry, american hazelnut, hackberry and red elderberry

Prices Range from \$1.00 - \$25.00

CASH or CHEQUE, ONLY!

Small Quantity of Landscape Trees Available

Location: Grey Sauble Conservation Administration Centre - 237897 Inglis Falls Road, Owen Sound

Bring your own container for the bareroot seedlings (eg. pail or bags)

Refreshments & BBQ lunch fundraiser by Grey Sauble Conservation Foundation



Young Naturalists Club

If you like being outdoors, playing environmental games, crafts, and learning about nature, and you are between 7 and 12 years old, give us a call to join the Young Naturalists Club in September.

519 376-3076 ext 224

A cooperative program between Grey Sauble Conservation and The Owen Sound Field Naturalists.



Remember a loved one Memorial Forest

Plant a tree as a living memory of a loved one. A tree costs \$50 and is planted at one of three memorial forests near either Wiarton, Owen Sound or Meaford. Each June a dedication ceremony is held for families and donors of trees purchased in the preceding months.



Grey Sauble Conservation
FOUNDATION

For more Information
foundation.greysauble.on.ca

You can still **BOOK NOW** for **YOUR Spring 2013 Tree Planting**

Tree Planting Grants Available

1. 50 Million Tree Program

- up to \$1.35 per tree, grant available for eligible projects (minimum landowner contribution is \$.15 per tree, minimum size of project 2.5 acres)

2. Full Service Program

- \$.50 per tree grant available for eligible projects (minimum 1,500 trees)

3. Grey Bruce Forestry Service Tree Planting Program

- available for smaller planting projects

Questions about our programs,
please call at 519 376-3076 ext 224 or
e-mail k.mckee@greysauble.on.ca
www.greysauble.on.ca

Celebration for Conservation

Friday, September 27, 2013

Harry Lumley Bayshore Community Centre Owen Sound

Social Hour 6:00 pm Dinner 7:15 pm

Tickets \$50.00

Catering by **The Green Door**

Entertainment

Peter Ressi Jazz Trio
Comedian Johnny Gardhouse
Live & Silent Auctions

Sponsor

Heritage
PLACE
SHOPPING CENTRE

All proceeds supporting



Grey Sauble Conservation
FOUNDATION
Tickets available by
calling - 519 376-3076

The Great Outdoors Adventure

Summer Day Camp

Join us in an Outdoor Adventure!



Beginning July 2, 2013 to
August 23, 2013

Bus Trips, Crayfish Hunting, Games,
Crafts, Hiking,
Swimming, and more!

Cost: \$23.00 per day

Place: Grey Sauble Admin Centre

Day Camp Hours: 8:30 am- 4:30 pm

For Ages: 7 - 12

Maximum: 24 children per day

Download our registration form

www.greysauble.on.ca

**Register today so your kids
won't be disappointed!**



Tour the Filtration Plant at Inglis Falls Conservation Area

June 1 & 2, 2013

10:00 am - 4:00 pm

A Free Family Event

Please wear appropriate footwear for hiking.
Meet Grey Sauble Staff at the Inglis Falls Pavilion
An Event, in conjunction with Doors Open