

Grey Sauble Conservation 2014 Annual Report



www.greysauble.on.ca



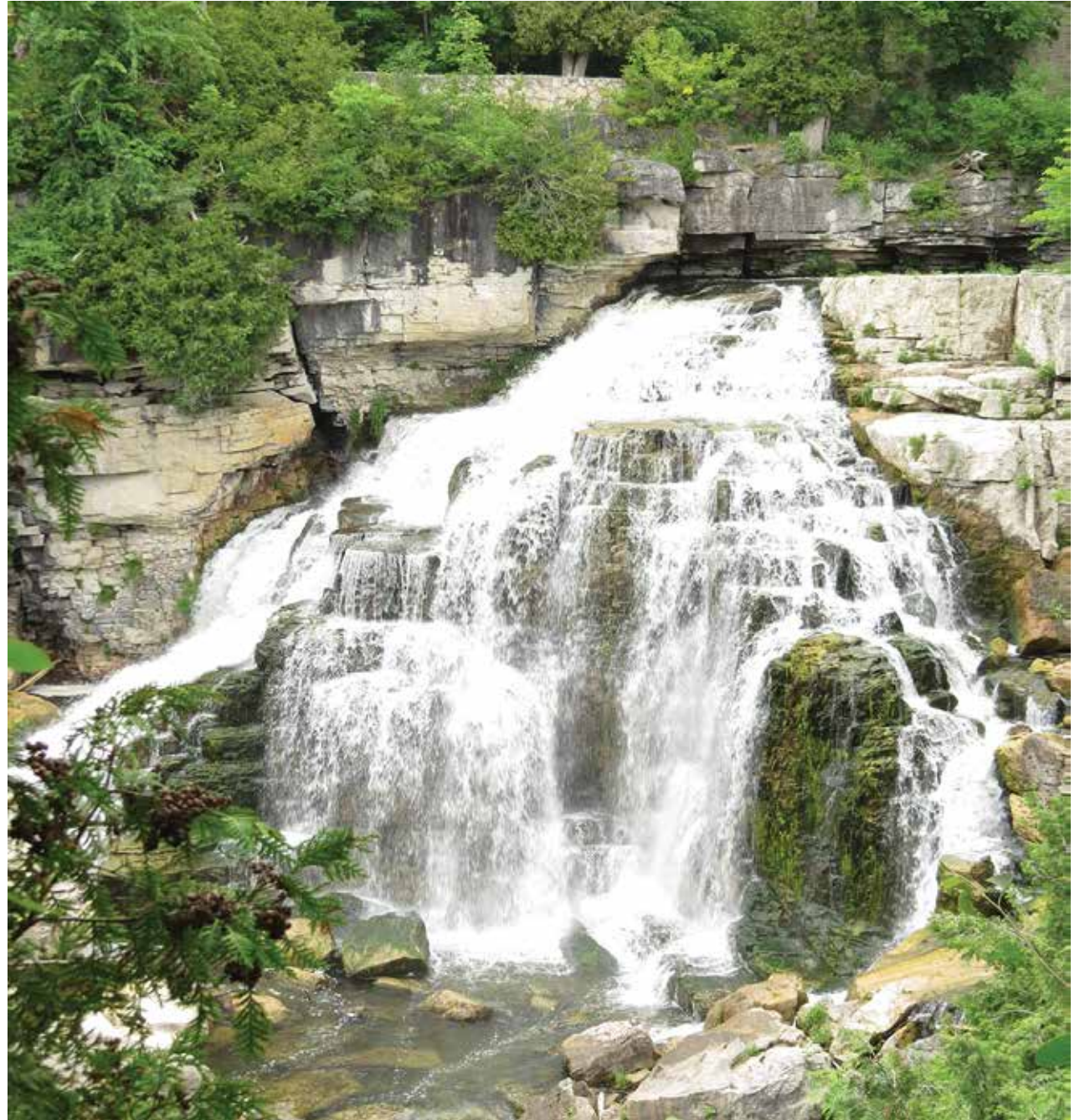
Happy Hikers at the Bruce Calvert Earth Day Hike



Plant a Tree In Memory of a Loved One, Page 7



Forest Certification, Page 5



Inglis Falls Conservation Area, just one of our 79 properties for you to explore!



Land Acquisition at Old Baldy, Page 5



Staff Prepare for Annual Tree Sale, Page 5



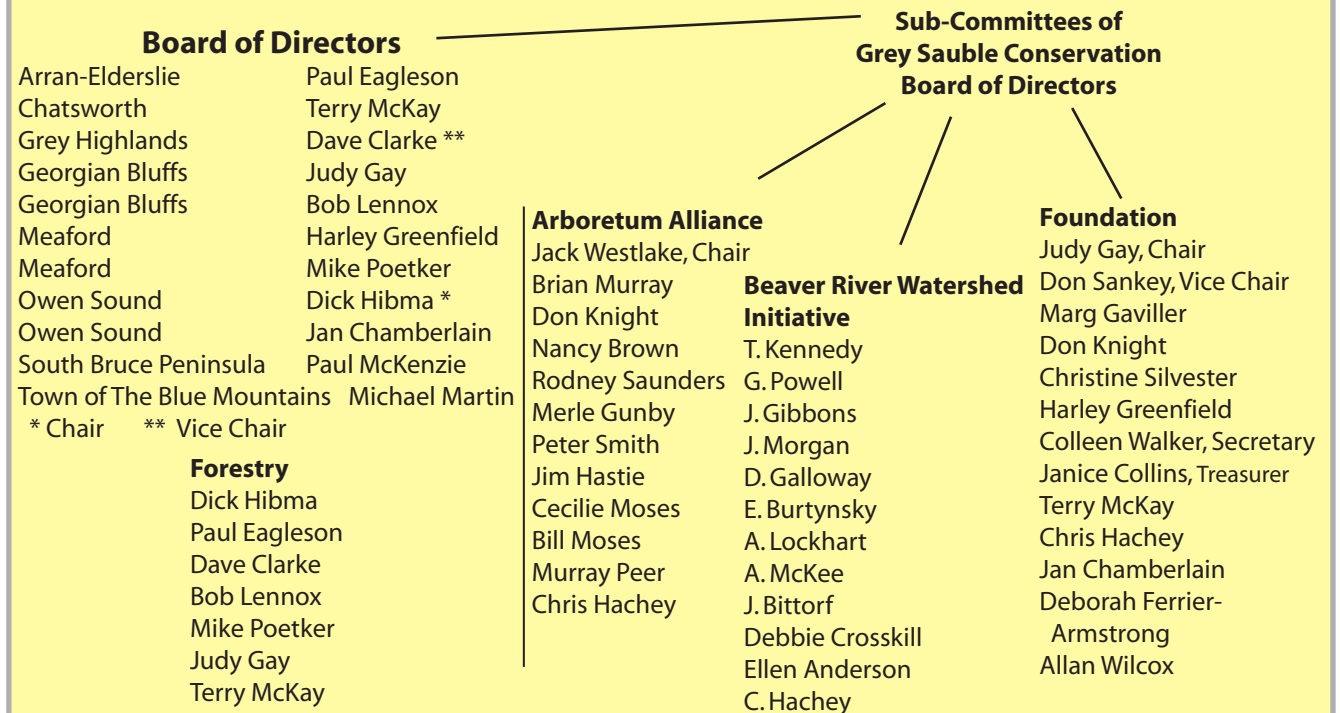
Arran Lake Conservation Area gets New Dock

2014 Staff

John Cottrill, Chief Administrative Officer
Alison Armstrong, Finance Coordinator
Doreen Robinson, Administrative Assistant
/Accounting Clerk
Serenity Morton, Clerical Assistant
John Bittorf, Water Resources Coordinator
Andy Sorensen, Environmental Planning Coordinator
Tim Lanthier, Watershed Planner
MacLean Plewes, Planning Technician
Vicki Rowsell, Planning Technician
Gloria Dangerfield, GIS/Database Coordinator
Mike Fry, GIS/Forestry Technician
Krista McKee, Community Relations Coordinator
Anne Lennox, Forestry & Wildlife Coordinator
Carl Sadler, Grey County Tree Cutting By-law Officer &
Forestry Technician
Cam Bennett, Forestry Technician
Chris Hachey, Land Management Coordinator
Lee Thurston, Resources Technician
Jason Traynor, Field Superintendent
Wade Nixon, Assistant Field Superintendent

Our Board of Directors

The Grey Sauble Conservation watershed is comprised of 8 municipalities. Each municipality appoints one or two representatives to our Board of Directors. The appointment is based on municipal population, under 10,000 - one representative is appointed, and more than 10,000, but less than 50,000 population - two representatives are appointed to the Board of Directors.



What we Do!



Water Management & Monitoring, Page 3
Flood Forecasting Stations - 7 snow survey;
7 precipitation ;4 temperature;and 9 stream flow
Flood Control Structure
Low Water Monitoring
Surface Water and Groundwater Quality Monitoring
BioMap
Thermal Stream Classification
Stream Crossings, Baseflow and Fish Presence



Geographic Information Systems, Page 4

Create Maps using Spatial Information & Data

Orthophotography

GPS Conservation Authority Properties

3D Mapping

Geotagging Photos



Planning, Page 4

- Development, Interference with Wetlands and Alteration to Shorelines and Watercourses Regulation (Ont. Reg. 151/06)
- Plan Input and Review
 - Natural Hazards
 - Natural Heritage Issues
 - Planning Services to the Public
 - Municipal Planning Services
 - Development Review
- Watershed Studies, Plans and Special Projects



Land Management, Page 5

Conservation Areas
Management Areas
Nature Preserves
Trails
Inglis Falls Arboretum



Forestry and Wildlife, Page 5

Forest Management

Tree Planting, Tree Seedling Sale

50 Million Tree Program

Grey Bruce Forestry Service

Tree Planting Incentive Programs

Managed Forest Tax Incentive Program



Community Relations, Page 6
Wildwater Program
Young Naturalists Club
The Great Outdoors - Summer Day Camp
Conservation Education Programs
Corporate Promotions/ Marketing/ Interpretive Signs
Tourism, Presentations, Website, Social Media



Finance & Administration, Page 6
Supporting all Departments
Responsible for Administrative - day to day operations



Foundation, Page 7
Memorial Forest
Bruce Calvert Earth Day Hike
Conservation Trust Fund
Membership
Trees for Schools
Salmon Hike
Malcolm Kirk Scholarship



Drinking Water Source Protection, Page 7
Protecting Local Drinking Water Sources
Clean Water Act
Source Protection Plan Municipal Implementation

Our Administration Centre

is located at 237897 Inglis Falls Road just south of Owen Sound. You will see our entrance signs!

The Administration Centre is open Monday to Friday 8:30 am - 4:30 pm. There are many accessible walking trails in the Arboretum (a place to study trees), benches and interpretive plaques. The Arboretum pavilion awaits your visit!



Water Management

Haines Dam

This dam is over 100 years old and has been rebuilt and repaired several times in the past. In 2009, temporary repairs were completed on the north berm to address some leakage issues. Further repairs are needed and the overall integrity of the dam is unknown. In 2011, GSCA held an open house in Clarksburg to initiate feedback from the local community regarding the possible removal of the dam. GSCA did not receive any negative comments regarding the removal and most were very supportive of the direction we were taking. Since then, GSCA proceeded with the process to have the dam removed. Provincial funding cuts and delays in receiving required permits have prevented the removal of this dam. In 2014, GSCA continued to move forward with this project and is in the process of obtaining permits with the hopes to remove this dam in 2015.

Owen Sound Mill Dam

Inspections of the dam have revealed several areas of the structure where concrete has deteriorated and has started to fail. The concrete abutment between the two main sluiceway gates has begun to break away resulting in a leak of water through the concrete. Further deterioration may interfere with our ability to operate the main gates. Concrete has also broken away around the railings in several locations and surface erosion of the concrete in the spillways has occurred in several locations. Since 2011, GSCA has attempted to secure funding and to complete this project. Provincial grants are required before we are able to undertake projects of magnitude. In 2014, GSCA received Provincial funding to determine the best location to pass the IDF without impacting upstream landowners. This information is required before an MNR permit will be issued for this project. We are hopeful that we can complete the repairs this fall (2015) after the salmon are done running the fishway.

Rankin Dam

The Rankin Dam maintains water levels in Boat Lake and Isaac Lake for recreational purposes. This past year we had difficulties installing the boards properly due to equipment failure and struggled all summer to maintain water levels. This dam is very tricky to put in and requires the assistance of a commercial diving crew.



Ice Management

During extended cold periods throughout the winter, frazil ice may form and begin to accumulate in areas of our rivers and streams where fast flowing water begins to slow down. This accumulation can be very extensive and may cause flooding as the ice dams the channel. This is a significant concern for residents of Clarksburg. The river channel through the town of Clarksburg is one of these locations where this ice damming occurs. In 2014, we experienced several extended cold periods and frazil ice damming did occur in Clarksburg. Fortunately, The Town of Blue Mountains staff were able to keep the damming to a minimum and no serious flooding occurred.



Haines Dam

Monitoring our Watershed Water



John Bittorf,
Water Resources Coordinator

Benthic Monitoring

Thirty sites throughout the watershed have samples collected annually using specialized nets. These samples include insect larvae, worms, crayfish and other organisms (larger than 0.5 mm) that live in the stream bed. With the aid of a microscope, staff identify these specimens and use a scoring system called "BioMap" (Biological Monitoring and Assessment Program) to evaluate the quality of the water. This protocol scores specimens based on different water quality conditions required for their survival. The presence (or absence) of some of these specimens in a sample can be used to classify water quality as good, fair or poor.

Surface Water and Ground Water Quality

Partnering with the Ministry of the Environment (MOE), Grey Sauble monitors 10 surface water sites and 10 groundwater monitoring wells. The surface water sites are sampled 8 times each year and submitted to MOE for chemical analysis. The groundwater sites have water level loggers that are downloaded 4 times each year. In the fall, water samples were taken from each well and submitted to the Ministry of the Environment for analysis of water quality.

Thermal Stream Classification & Data Collection

During the warm summer months, small creeks and streams should be cold and larger watercourses should remain cool. Obtaining water temperatures can help classify systems as "cold water" (support brook trout), "cool water" (brown trout, rainbow trout) or "warm water" (baitfish, bass). Staff and volunteers regularly take water temperatures & observe presence of fish, type and size of water-crossings, culverts, etc. which is recorded in our database to be used as a tool in review of planning and permit applications.

GIS (Geographic Information System)

Geographic Information Systems staff have been developing a hydrologically enforced digital elevation model (DEM). A DEM is a 3D representation of a terrain's surface created from terrain elevation data. The model allows staff to create many other products and refine current data. The model uses data native to 2010 orthophotography and stereo-pairs to create a representation of bare-earth elevations throughout the Grey Sauble watershed. This allows staff to see detailed elevation changes, make better informed decisions and reduces time required in the field to ground truth data. The DEM will also improve our regulation mapping accuracy.



The two images are the same, just a different perspective

Blue Mountain looking south west

An aerial view of Blue Mountain

The GIS department also worked closely with forestry staff to develop new up to date stand boundary information using 2010 orthophotography. The 3D system purchased in 2013 is allowing our forestry staff to gather accurate real-world data such as tree heights and species compositions by clearly showing the structure of each stand. This information is being used to make more informed management decisions and update the Forest Management Plan.

MASSIE HILLS Management Area

MASSIE HILLS Management Area

Massie Hills Management Area is a four season destination. During the winter months, it is home to the Owen Sound Cross Country Ski Club. Volunteers spend hours maintaining the track set trails for traditional cross country skiing. Your support in obeying the rules for the track set ski trails is appreciated. Please keep other activities (snowshoeing, dogs, horses, walking) outside of the track set ski trails.

In Case of an Emergency CALL 911, your closest location is, Civic Address Number 497250, 6th Concession Rd South, Municipality of Meaford (Sydenham Township)

UTM x 513078.8 y 4928248.7 Longitude - 80.8103 Latitude 44.5074

Conservation Lands Signs

We continue to update our property trail signage using Orthophotography, GPS and property boundary layers. In 2014, we worked with the Community Relations Coordinator in providing mapping for 10 new trail signs for the Massie Hills Management Area in conjunction with Owen Sound Cross Country Ski Trail and Grey County. Mapping was also provided for the Beaver Valley Nordic Ski Club.

Environmental Planning

Plan Input and Review

Environmental Planning is a preventative and consultative process that promotes healthy ecosystems and watersheds, prevents loss of life and minimizes the risk of damage to your property from flooding and erosion hazards. Under agreements with member municipalities and in consultation with county and municipal planning departments, Ministry of Natural Resources, Niagara Escarpment Commission, Ministry of the Environment, Fisheries and Oceans Canada, Grey Sauble staff review applications for consistency with the Provincial Policy Statement (PPS) under the Planning Act. The two main sections of the PPS that Grey Sauble focuses on are 3.1 Natural Hazards and 2.1 Natural Heritage. Natural Hazards include flooding, erosion, steep slope and dynamic beach hazards. Natural Heritage features include fish habitat, significant wildlife habitat, significant woodlands, significant valley lands, provincially significant wetlands, threatened/endangered species, and Areas of Natural and Scientific Interest (ANSI). In many instances, development proposed in or adjacent to these features triggers a requirement to complete an environmental impact study and/or Natural Hazards assessment. Authority staff review these reports and provide input to planning boards or committees.

Development, Interference with Wetlands and Alteration to Shorelines and Watercourses Regulation (151/06)

The regulation requires that a permit be obtained from our office if you are considering any type of proposed work on the following:

- straightening, changing, diverting or interfering in any way with the existing channel of a river, creek, stream or watercourse or interfering in any way with a wetland
- development (includes site alteration and construction of building) adjacent or close to the shoreline of Lake Huron, Georgian Bay or inland lakes, in river or stream valleys, hazardous lands, wetlands or lands adjacent to wetlands.



Number of Applications reviewed in our Watershed municipalities: 151/06			
	Planning	Permits	Totals
Municipality of Arran-Elderslie	10	6	16
Township of Chatsworth	25	15	40
Township of Georgian Bluffs	80	58	138
Municipality of Grey Highlands	84	56	140
Municipality of Meaford	51	41	92
City of Owen Sound	31	20	51
Town of South Bruce Peninsula	49	36	85
Town of The Blue Mountains	68	68	136
Other Applications Reviewed for Non-Member Municipalities			
- Fees Supplied by Applicants	27	1	28
Totals	425	301	726



Please contact us if you are unsure you require permission under this regulation for a project.

Plan Review Activities in 2014	
Official Plan Amendments	11
Subdivision/Condominium Applications	2
Zoning By-law and Removal of Holding	65
Consent	63
Niagara Escarpment Commission	59
Minor Variance	53
Pit/Quarry	1
Technical Studies and Site Plan Review	24
Site Inspection and Letter	65
Regulation 151/06 Permit Activities	
Regulation Inquiries	83
Permits	306

Land Management

Old Baldy Conservation Area Land Purchase

Grey Sauble Conservation successfully negotiated a deal to purchase 45 acres of significant Niagara Escarpment land just below Old Baldy Conservation Area near the Village of Kimberley. The land features rugged tall cliffs and a sweeping landscape that is the signature of the Niagara Escarpment in the Beaver Valley. The property will become part of the existing 128 acres of Old Baldy Conservation Area land. The land will also secure access for existing popular recreation activities such as rock climbing and create new opportunities for trail development with connections to the Village of Kimberley.



The purchase is made possible thanks to the hard work and generosity of the Alpine Club of Canada and the Ontario Access Coalition who were able to secure funding from Mountain Equipment Coop and countless club member donations. The Bruce Trail Conservancy and the Nature League were also major funding contributors.

New Trail Signage at Massie Hills Management Area

Grey Sauble Conservation and Grey County partnered to design and install new trail signage at Massie Hills. Massie Hills features an 11.5 km multi-season trail system located within Grey Sauble Conservation and Grey County lands. The new signage is located at each intersection of the trail system, helping visitors better navigate the 7 different trails throughout the forest. During the winter months the trails are groomed and maintained for skiing by the Owen Sound Cross County Ski Club. <http://massiehills.com/> Massie Hills is located 2.3 km south of County Road 18 on Concession 6, civic entrance is #497250.



John & Christina Bakker at Massie Hills



Arboretum - The Meadow

In June, a flail mower began preparation of the meadow. This machine mulches and shreds the vegetation - they will do this again in 2015 prior to seeding. The Meadow Interpretive Sign was installed in 2013. The Arboretum is located at 237897 Inglis Falls Road, just south of Owen Sound.



Did you know?

The **Friends of Hibou** placed stonedust along 250 metres of trail and installed 60 metres of new boardwalk at Hibou Conservation Area.

Thank you Friends of Hibou!

Explore the trails, check out their new trail brochure or help out as a volunteer.

www.friendsofhibou.com

Forestry

Tree Planting -

Trees Ontario - 50 Million Tree Program

- 31 projects, 130,230 trees planted

Grey Bruce Forestry Services Tree Planting Program

- 3 projects - 400 landscape trees planted

Over the Counter Tree Sales

- 79 private orders - 19,495 trees & shrubs

Arbour Day Tree Seedling Sale

- Seedlings, Trees & Shrubs 8,806

- Wildflowers 1,142

- Cocodiscs* & tree wraps 668

Landscape Stock Trees

- 54 private orders - 2,090 trees

Vegetation Control

- Simazine and/or Roundup Spraying 106,351

- Cocodiscs* (*fiber mat for base of tree) 2,000

- Frost Seedling (White Dutch Clover) 15,300 trees



Trees Planted in your Municipality

Northern Bruce Peninsula	2,000	Arran Elderslie	1,500	Georgian Bluffs	27,380
South Bruce Peninsula	0	Chatsworth	19,850	Grey Highlands	43,260
Meaford	27,700			Town of The Blue Mountains	8,540

Grey Bruce Forestry Services

Our staff provide a full range of forestry services for landowners.

Services include: tree marking; tendering, monitoring; Manage Forest Tax Incentive Program Plan (MFTIP) for landowners to receive a reduction in property taxes. This year staff prepared 30 new MFTIP Plans and 6 MFTIP renewals.

Forest Management Operations 2014

Property	Comp #	Operation	Area (acres)	Volume (fbm)	Revenue (full cords)
Holland Centre	62	Plantation	9.6	80	\$ 3,000
Kolapore Uplands 93		Plantation	64.0	462	\$ 24,000
Kolapore Uplands 96		Plantation	26.0	212	\$ 10,000
Total					\$ 37,000

Emerald Ash Borer Working Group

Grey Sauble in cooperation with other organizations, formed an Emerald Ash Borer (EAB) Working Group to monitor the EAB as it moves throughout Grey & Bruce Counties. Funding was received from Bruce Power to assist with a trapping program. EAB has been confirmed along the south Lake Huron Shoreline in the areas of Kincardine, Underwood, Point Clarke and Ripley. It was also confirmed in Tobermory and just west of Highway 6 on the Keppel-Derby Townline.



Susan Gowan, Ministry of Natural Resources & Forestry demonstrates how to hang traps in trees to monitor and detect EAB.

Forest Certification

The forests owned and managed by Grey Sauble Conservation has achieved Forest Stewardship Council® (FSC®) certification (FSC® C018800) through the Eastern Ontario Model Forest's Forest Certification Program. The FSC® is an international, membership-based, non-profit organization that supports environmentally appropriate, socially beneficial, and economically viable management of the world's forests.



left to right, Cam Bennett, Paul Eagleson Authority Director Arran Elderslie, and Anne Lennox, Forestry & Wildlife Coordinator

Community Relations - Information and Education

Social Media

Grey Sauble's website traffic is on the rise. Visitors are very curious about visiting Grey Sauble's four waterfalls. Facebook likes continue to rise as well. You can follow us at www.facebook.com/greysauble or visit www.greysauble.on.ca

Wildwater Program - Spring Ice Water Safety Program

Grey Sauble Conservation visited 10 schools (840 grade four and five students), educating them of the dangers of spring ice water. GSC staff interacts with students identifying dangerous ice conditions, hypothermia, and challenges the children to the cold water /blubber glove experiment and a weighted swim experiment. We thank our Community Partner, Ontario Power Generation for supporting our program.



The Great Outdoors Day Camp

Summer day camp staff Jake See and Ellen Diemert welcomed 24 children each day to take part in hiking experiences, water activities, games, crafts, crayfish hunting, water tubing, bus trips, swimming at Harrison Park Pool and more. Cost to attend day camp in 2014 was \$24.00 per day.

Young Naturalists Club

In 2014, 27 children registered for the Young Nats Club. The Club is for children ages 7 to 12 years old. Children under the age of 7 may attend with parent accompaniment. The 2014 activities were: field trip to a heritage orchard, exploring the Water Filtration Plant, building bird feeders from your recycle bin, sugar bush tour at Regal Point Farm, snowshoeing at Bognor Marsh with a campfire, hot chocolate, and bannock; Bognor Marsh frog and snake identification and more. Cost to join the Young Naturalists Club was \$30.00 per family.

Grey Bruce Children's Water Festival

The three-day event in September was open to Grade 4 students in Grey and Bruce Counties. Approximately 1,200 students took part in exploring over 40 hands-on activities and learning about water. This event relies on sponsorships and over 150 volunteers to assist with the event.

Bruce Grey Forest Festival

In October, this three-day event took place in the Allan Park Management Unit. Approximately 900 Grade 7 students participated in forest activities exploring ecosystems, resource management and sustainability, biodiversity, species at risk and stewardship. Many displays were also on site: Ontario Hydro Forestry Department, reptiles, birds of prey and a portable saw-mill. A Big Thank You to all the volunteers that make this event happen!



New Trail Signs

New signs at Massie Hills Management Area will guide you through the trail system on Conservation Authority lands and Grey County lands. Working with the Owen Sound Cross Country Ski Trail as well, the trails are colour coded and the named loops are all on the new mapped trail signs. The GIS department has a huge help in assisting with this project!

Youth Expo

The Youth Expo was held on June 7th at the Sydenham Sportsmen's Clubhouse. This all-day event was open to children ages 10-17. The day provided hands on activities to experience: archery, target shooting, casting a fishing pole, and aquatic critter dip.

Doors Open May 31 & June 1, 2014

Each year Inglis Falls Conservation Area is part of Doors Open Owen Sound. On Saturday, May 31st many people took advantage of the opportunity to view the inside of the Inglis Falls Water Filtration Plant.

Science Fair

Each year Grey Sauble provides a trophy and a cash prize at the Bluewater School Board Science Fair for a Grade 4 project that best illustrates the wise use of soil or water. The recipient of the 2014 Grey Sauble Award was Jadzia Leask, Kinghurst Community School, Chesley.

The Extraordinary Tree (Chair, Stephen Hogbin)

On September 11th Grey Sauble hosted the launch of The Extraordinary Tree program that involves four organizations: Grey Roots, Tom Thomson Art Gallery, Fanshawe College and Grey Sauble. The project will engage people to celebrate trees through events, exhibitions and community based activities. The first event is the Tree Challenge, where you can nominate your favourite tree. www.extraordinarytree.com

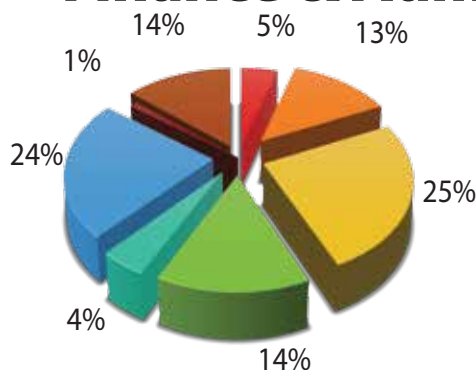
Touring with Tom Thomson's Social Studio

Artists experienced 5 different Conservation Areas (Inglis Falls, Bognor, Pottawatomi, Indian Falls & Spirit Rock/McNeill Estate) to take part in a guided hike to inspire history, nature and their creative thoughts.

Getting the Word Out - In Nature!

Numerous hikes took place with: Brownies, Girl Guides, Bruce Trail Days, Meaford Day Campers, Community Living, Grey-Bruce Adventours, Alzheimer's Association, and Canadian Mental Health Association.

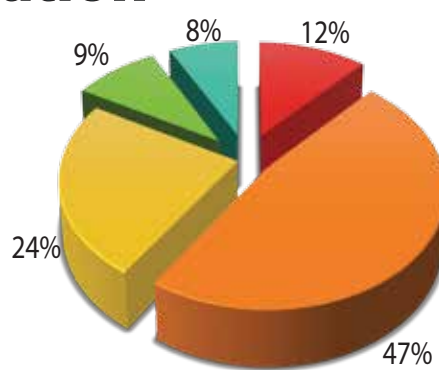
Finance & Administration



Expenses

(Unaudited)

Water Management	\$120,156 (5%)
Environmental Planning	\$334,637 (13%)
Forest Management	\$635,209 (25%)
Conservation Properties	\$355,653 (14%)
Information & Education	\$110,162 (4%)
Administration	\$590,611 (24%)
Miscellaneous	\$24,664 (1%)
Capital Projects/Reserves	\$345,007 (14%)



Revenue

(Unaudited)

Grants/Trees Ontario	\$295,528 (12%)
Municipal Levy	\$1,195,421 (47%)
User Fees	\$604,647 (24%)
Other Revenue	\$230,125 (9%)
Reserves	\$190,378 (8%)



The Grey Sauble Conservation Administration Centre is located on 237897 Inglis Falls Road, just south of Owen Sound. Our office hours are: 8:30 am - 4:30 pm Monday to Friday Phone 519 376-3076 Fax 519 371-0437 www.greysauble.on.ca

Grey Sauble Conservation Foundation



The Foundation is a Registered Canadian Charity that raises funds to support Grey Sauble Conservation, its policies and activities that protect natural habitats, and its efforts to enhance biodiversity and environmental awareness.

Malcolm Kirk Environmental Scholarship



In 2013, the board of directors renamed the scholarship to honour Malcolm Kirk, who died in 2012. Mr. Kirk was instrumental in acquiring almost 80% of Grey Sauble's landholdings.

The 2014 recipient of the \$1,000 Malcolm Kirk Environmental Scholarship was Savannah MacDonald of St. Mary's High School. Savannah is pursuing a Bachelor of Science in Environmental Science at Guelph University.

Cheque Presentation, Left to Right, Judy Gay Foundation Chair and Savannah MacDonald

Memorial Forests

Big Mud Lake and Pottawatomi Memorial Forest Signs were installed this spring. Griersville Memorial Forest sign was installed in 2013. All three Memorial Forest sites are completed with new plaques, interpretive signs, benches, roadside signs at municipal and county crossroads.

If you wish to have a tree planted in memory of a loved one, please call our office 519-376-3076 and staff will be happy to help you.

Each year we host a Commemorative Ceremony at the Administration Centre to recognize all those who have had a tree planted in their memory.



Fundraising Initiatives

Tree Seedling BBQ - Graciously sponsored by Zehrs



Foundation Directors put on their chef hats and BBQ food for the Annual Tree Seedling Sale.

Bruce Calvert Earth Day Hike

Students from Meaford Community, St. Vincent-Euphrasia Elementary and Georgian Bay Secondary School took part in "The Bruce Calvert Earth Day Hike for Conservation" on Tuesday April 22, 2014. This event is a fundraiser for both Grey Sauble Conservation and the school you hike for - a fifty, fifty split.

Inglis Falls Gatehouse

The Foundation Directors welcomed visitors at Inglis Falls during the week of October 6th to the 10th. All donations and parking fee proceeds were part of their fundraising initiatives.

The Fall Salmon Run - Guided Tour

(Oct 4, 5, 11, 12, 13)

The Foundation partnered with the Sydenham Sportsmen's Association (SSA) and the City of Owen Sound's Salmon Tour, providing guided tours by donation of the Sydenham River spawning beds. On October 5th, City of Owen Sound Tourism Coordinator Paulette Peirol contacted local chefs from Georgian College Owen Sound, Cobble Beach and Rocky Raccoon to prepare salmon to sample by our tour participants. The local salmon was donated by the Sydenham Sportsmen's Association. Donations received at this event were split between the Foundation and SSA.



Drinking Water Source Protection means protecting local drinking water sources from both contamination and overuse. Protecting the sources of our drinking water ensures that there is enough clean water for all of us. Good, clean water is something we all need; it is critical to our lives.

www.waterprotection.ca

Drinking Water Source Protection is the protection of local municipal drinking water sources from both contamination and overuse. By protecting the sources of drinking water, it ensures there is enough clean water for all.

The jurisdiction of the Saugeen, Grey Sauble, Northern Bruce Peninsula Source Protection Region includes the watersheds of Saugeen and Grey Sauble Conservation Authorities as well as the Municipality of Northern Bruce Peninsula. A Source Protection Committee (SPC) comprised of local representatives oversees this program.

2014 Highlights

1. Municipal Implementation Guide - Municipal workshops were hosted in May of 2014 with staff and councils from across Grey, Bruce and Wellington counties participating. A "Municipal" tab on the source water website links to the Implementation Guide chapters, administrative items including documents and templates, and other items that are useful for implementing the Source Protection Plan. www.waterprotection.ca/municipal.htm

2. June 2014, "After careful review of recent data on nitrate levels in the Walkerton area, the Committee feels confident in its decision to begin the process to remove the nitrate issue designation for the Walkerton municipal wells. The decision, as with all water issue decisions, has been made based on the evidence of the scientific research presented to us," stated SPC Chair Mike Traynor. The Committee's decision means that the following will take place: the Saugeen Valley Source Protection Area Assessment Report will be revised; nitrate policies will be deleted from the Proposed Source Protection Plan; and dozens of properties will not be affected by Source Protection Plan policies.

3. In 2014, the Source Protection Committee considered comments from the Ministry of the Environment and Climate Change and additional background information in drafting an Updated Proposed Source Protection Plan (UPSPP). The UPSPP and Revised Assessment Reports will be going to Public Consultation in February of 2015 for comment and review by implementing bodies, various governmental stakeholders and the public. The UPSPP and Revised Assessment Reports is targeted for resubmission to the Ministry in 2015.

4. Technical Work; Intake Protection Zones and Wellhead Protection Areas

i Additional technical work has been carried out and the results have been incorporated into updates of the Assessment Reports and the Source Protection Plan.

ii Data on spill modelling has been completed for local intakes, including modelling fuel and sewer treatment plant spills during storm events. These areas have been delineated as Events-based areas (EBA). Generally the EBA encompasses the Intake Protection Zones 1 and 2 (IPZ-1 and IPZ-2). If the EBA goes outside these areas, that area is considered an IPZ-3. Policies have been drafted to address significant drinking water threats in these areas.

iii Some Wellhead Protection Area Es (WHPA-E) were re-delineated based on new information. Mapped areas generally became smaller resulting in fewer affected properties than previously. These are areas around municipal wells that are affected by surface water.

2014 Source Protection Committee

Mike Traynor, Chairman
Dr. David Biesenthal, Robert Emerson, Brent Lanktree
Ken Furlong, Kathie Hughes, Les Nichols, Bill Twaddle, Mitch Twolan
Carolyn Parker, Mark Kraemer
Andrew Barton, Bruce Davidson, Carolyn Day, Les MacKinnon, Dale Thompson



2015 Programs & Events



Remember a loved one **Memorial Forest**

Plant a tree as a living memory of a loved one. A tree costs \$60 and is planted at one of three memorial forests near either Wiarton, Owen Sound or Meaford. Each June a dedication ceremony is held for families and donors of trees purchased in the preceding months.



Grey Sauble Conservation
FOUNDATION

For more Information
foundation.greysauble.on.ca



Your trusted EXPERTS in Forest Management Services!

- Provincially Certified Tree Markers
- Forest Tendering Services
- Tree Planting and Tree Seedling Sales
- Free Informative Workshops
- Emerald Ash Borer Inoculation
- 50 Million Tree Program
- Tree Planting Incentives
- Vegetative Services (Licenced)
- Managed Forest Tax Incentive Program

Approvers
519 376-3076 ext 232 or 519 367-3040 ext 233

Annual Tree Seedling Sale

Saturday, April 25, 2015

8:00 am - 12:00 noon

Species Available

white birch, black cherry, black locust, sugar maple, red maple, silver maple, red oak, white oak, hybrid poplar, black walnut, hackberry, balsam fir, fraser fir, white cedar, eastern hemlock, austrian pine, white pine, red pine, white spruce, norway spruce, colorado blue spruce, tulip tree, sycamore, nannyberry, american highbush cranberry, black elderberry, american hazelnut, red elderberry and apple, cherry & pear trees

New this year - upland or lowland, meadow or woodland flowers

Prices Range \$1.00 - \$40.00

Cash, Debit, Visa, Mastercard

Bring your own container for the bareroot seedlings
(eg. pail or bags)

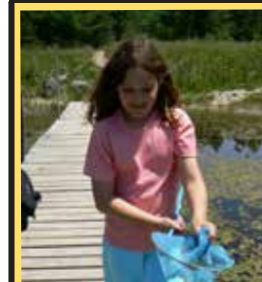
Small Quantity of Landscape Trees Available

Location: Grey Sauble Conservation Administration
Centre - 237897 Inglis Falls Road, Owen Sound



Refreshments & BBQ lunch fundraiser by
Grey Sauble Conservation Foundation

Graciously sponsored by **Zehrs MARKETS**



If you like being outdoors, playing environmental games, crafts, and learning about nature, and you are between 7 and 12 years old, give us a call to join the Young Naturalists Club in September.
519 376-3076 ext 224

A cooperative program between Grey Sauble Conservation and The Owen Sound Field Naturalists.

The 2015 Great Outdoors Adventure Summer Day Camp



Join Us in
Outdoor Adventure!

**Beginning June 29 to
August 21, 2015**

**Bus Trips, Crayfish Hunting, Games,
Crafts, Hiking,
Swimming, and more!**

Cost: \$25.00 per day

Place: Grey Sauble Admin Centre

Day Camp Hours: 8:30 am- 4:30 pm

Ages: 7 - 12

Maximum: 24 children per day

Download our registration form

www.greysauble.on.ca

**Register today so your kids
won't be disappointed!**



Tour the Filtration Plant
One day only at
Inglis Falls Conservation Area
Sunday June 7, 2015 - 10:00 til 4:00

A Free Family Event

Please wear appropriate footwear for hiking.
Meet Grey Sauble Staff at the Inglis Falls Pavilion

*Inglis Falls Conservation Area is part of Owen Sound
Doors Open on Saturday, June 6 & 7th*