

Explore

Lookouts



Waterfalls



Beaches



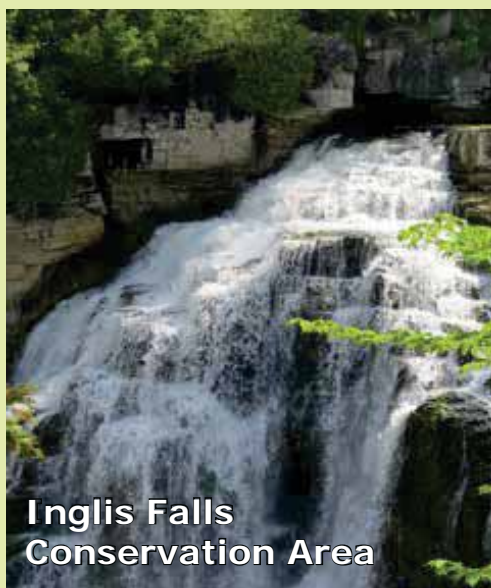
Hiking



*Grey Sauble
Conservation*



Old Baldy
Conservation Area



Inglis Falls
Conservation Area



Hibou
Conservation Area

Explore Grey Sauble's Properties

P Parking and Pass fees
can be paid via phone
or your computer.
Purchase a season pass for
the year to explore all of
our properties.
www.greysauble.on.ca

Take your next active adventure at a Grey Sauble property! Grey Sauble Conservation (GSC) owns and manages almost 29,000 acres of the most scenic and environmentally sensitive lands in Grey and Bruce Counties. This guide provides maps of amenities and recreational trails for our popular adventure spots. A Season Pass allows you to visit as many of the properties as you would like in a year. Your fees and donations are important to ensure that we can maintain and make these properties available to the public. GSC has facilities available for group use; to rent for your next group event call 519-376-3076.

	Page Number
Epping - John Muir Lookout	1
Spirit Rock & McNeill Estate	2
Bruce's Caves.....	4
Colpoys Lookout.....	5
The Glen.....	6
Hepworth.....	8
Kemble Mountain.....	10
Indian Falls.....	11
Jones Falls & Pottawatomi.....	12
West Rocks.....	14
WATERSHED MAP	17
The Arboretum & Administration Centre....	18
Inglis Falls.....	20
Arran Lake.....	22
Hibou.....	23
Ainslie Wood.....	24
Bognor Marsh.....	25
Trout Hollow (Bighead River).....	26
Massie Hills.....	28
Christie Beach.....	29
Peasemarth.....	30
St. Jean Point.....	31
Old Baldy.....	32
Eugenia Falls.....	34
Feversham Gorge & Madeleine Graydon....	35
Compare Properties	36
GSC and Poison Ivy Information	37



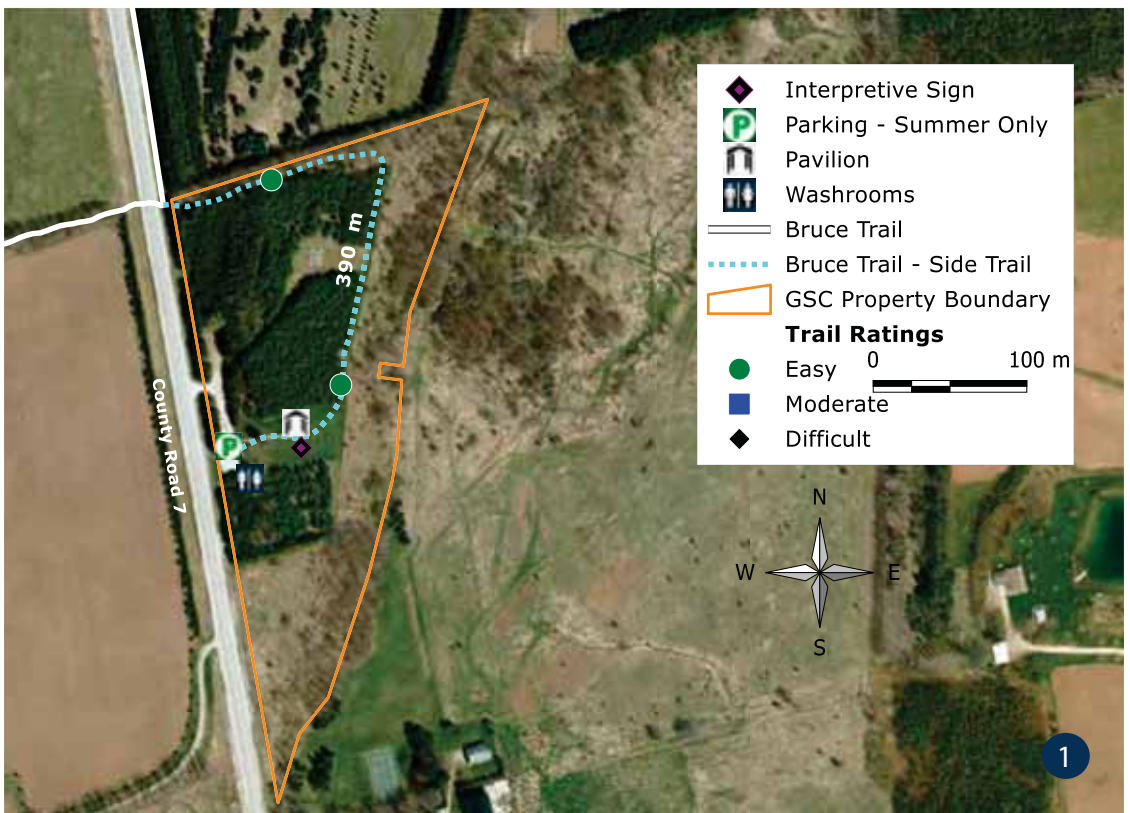
Produced by Grey Sauble Conservation Authority (GSC) with Data supplied under Licence by Members of the Ontario Geospatial Data Exchange. © Queen's Printer for Ontario and its licensors. [2018] May Not be Reproduced without Permission. THIS IS NOT A PLAN OF SURVEY. All of the included mapping is made available "AS IS", "AS AVAILABLE", and "WITH ALL FAULTS" without representations or warranties of any kind, either express or implied, as to the accuracy, completeness, reliability, currency, merchantability, fitness for purpose, title or otherwise. The entire risk as to the results and performance of the Map Products, IP, Data and Third Party Data is assumed by the user. The user shall indemnify and save harmless the GSC, its directors and officers, its representatives and employees, and Third Parties (collectively, the "Indemnitee") from and against any and all liabilities, damages, costs or expenses awarded against or incurred or suffered by the Indemnitee arising out of any action or proceeding commenced or maintained by any entity in respect of the users use of the Maps, Data, IP or Third Party Data.

Epping - John Muir Lookout

196241 Grey Road 7, see 1 on page 19

Entrance: X 535407.58 • Y 4923231.06 • Longitude -80.55 • Latitude 44.46

- Visit this area and learn more about John Muir and his interactions with the local Trout family
- The picnic pavilion is available for rent and is a popular location for weddings and photos
- Look out over the beautiful Beaver Valley
- Pine plantation offers an easy stroll
- Seasonal washrooms



Spirit Rock & McNeill Estate



Highway 6 North near Wiarton, see 2 on page 19

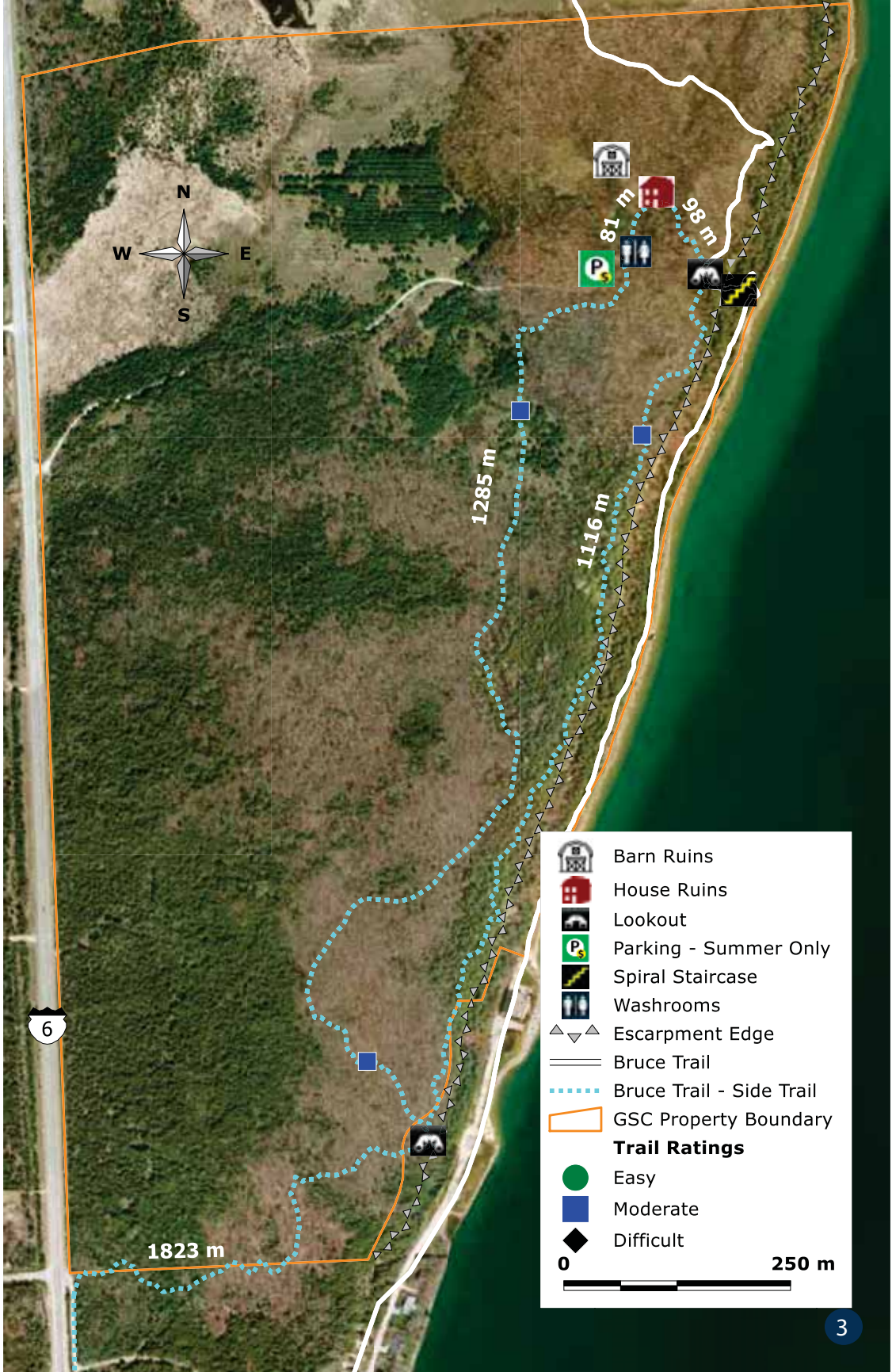
Entrance: X 488766.91 • Y 4956533.41 • Longitude -81.14 • Latitude 44.76



- This is a must-see property in Bruce County
- From the Bruce Trail at the top of the escarpment there are impressive views and the unique spiral staircase down along the escarpment edge to Colpoys Bay! While climbing the staircase you can have a closeness to the escarpment face usually reserved for rock climbers.
- Picnic tables
- Over 5 km of hiking trails (Blue Loop Trail 2.3 km and approximate time to hike is 1-1/2 hours)
- Open late Spring to Fall
- Seasonal washrooms



You can also visit the ruins of the McNeill Estate, which provides a glimpse into the history of Bruce County and its settlers. The heart of the McNeill family estate was the Corran, a 17-room stone mansion. Corran is Gaelic for 'point of land running into the sea'. Alexander McNeill was born in Northern Ireland and served as the Federal Member of parliament for the North Bruce Riding, 1881-1901.

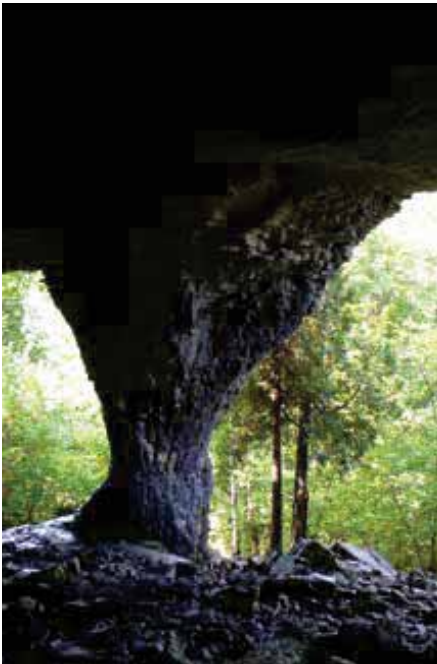


Bruce's Caves



502098 Grey County Road #1 NE of Wiarton, see 4 on page 19

Entrance: X 493268.72 • Y 4957250.45 • Longitude -81.08 • Latitude 44.76



- Glacial Caves - find the "Trail to Caves" sign and hike the Red Trail (20 minutes)
- Bruce Trail access
- Picnic pavilion (available for rent)
- Seasonal washrooms
- Explore history and footsteps of early settler Robert Bruce and his namesake area



Colpoy's Lookout

502727 Grey County Road #1 NE of Wiarton, see 5 on page 19

Entrance: X 497772.68 • Y 4960539.92 • Longitude -81.03 • Latitude 44.79

- The lookout over Colpoy's Bay is easily accessible directly from parking area
- Picnic tables
- Parking
- The view north from the lookout is beautiful most days but was not on that night in 1879 when the "Jane Miller" tried to find shelter from gale force winds. Visit this property to learn more about this nautical story.



The Glen

178865 Grey Road 17, 1 km north of Indian Acres Rd West, see 6 on page 19
Entrance: X 499976.48 • Y 4943208.17 • Longitude -81.00 • Latitude 44.64

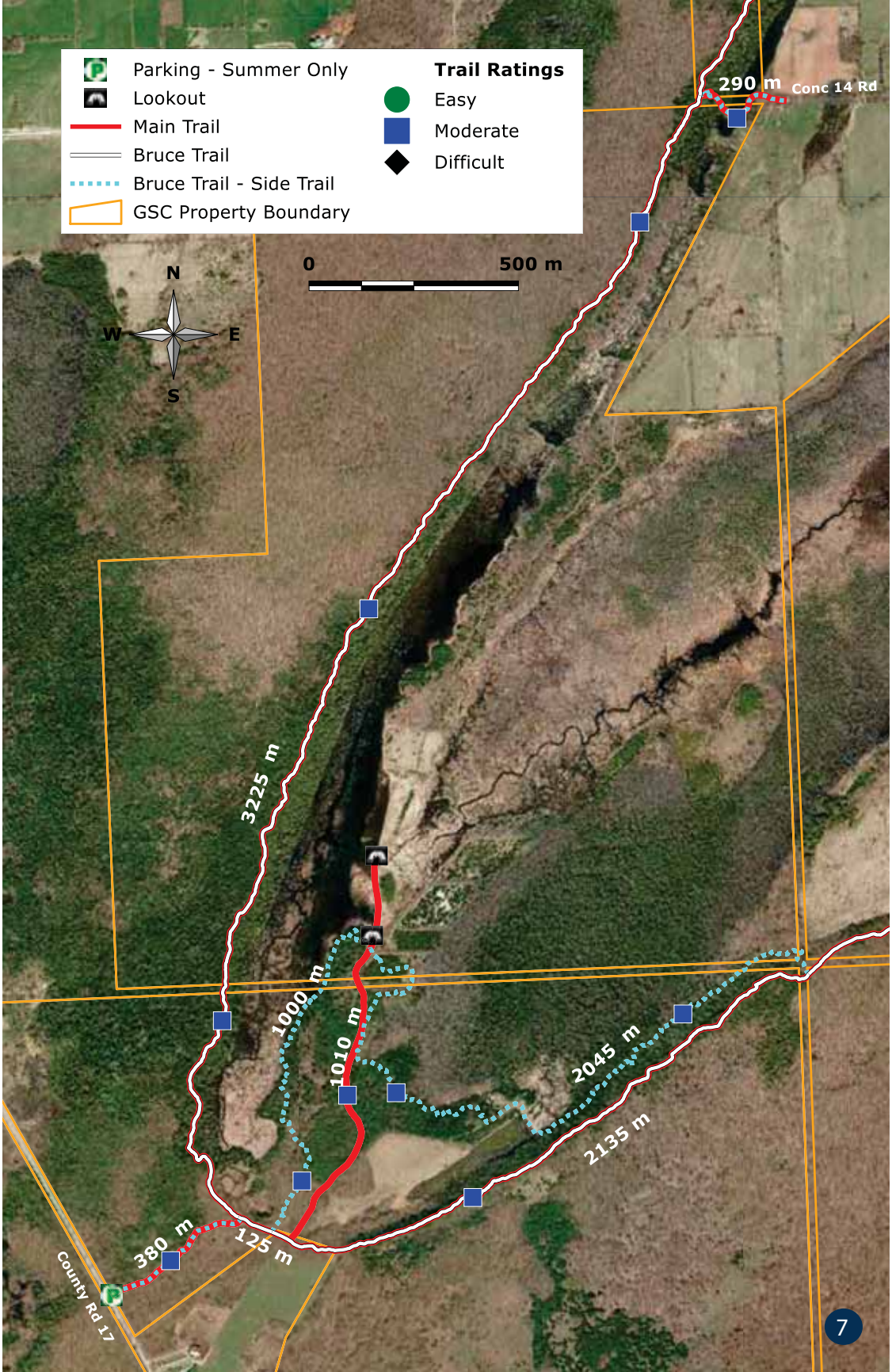
- Caution - High cliffs and steep slopes. Stay on trail and away from drop-offs.
- The wetlands at The Glen offer a home to many species of plants and waterfowl. It is a quiet place to hike, snowshoe and appreciate nature.
- The property also features a bog-like fen located above the escarpment
- Visitors consider it a hidden jewel of the Grey Sauble properties
- Lookouts on east ridge of the wetland and escarpment offer views of Georgian Bay and Owen Sound
- Bruce Trail access, 10 km of trails
- Parking on side of County Road 17



 Parking - Summer Only	Trail Ratings
 Lookout	 Easy
 Main Trail	 Moderate
 Bruce Trail	 Difficult
 Bruce Trail - Side Trail	
 GSC Property Boundary	



0 500 m



Hepworth

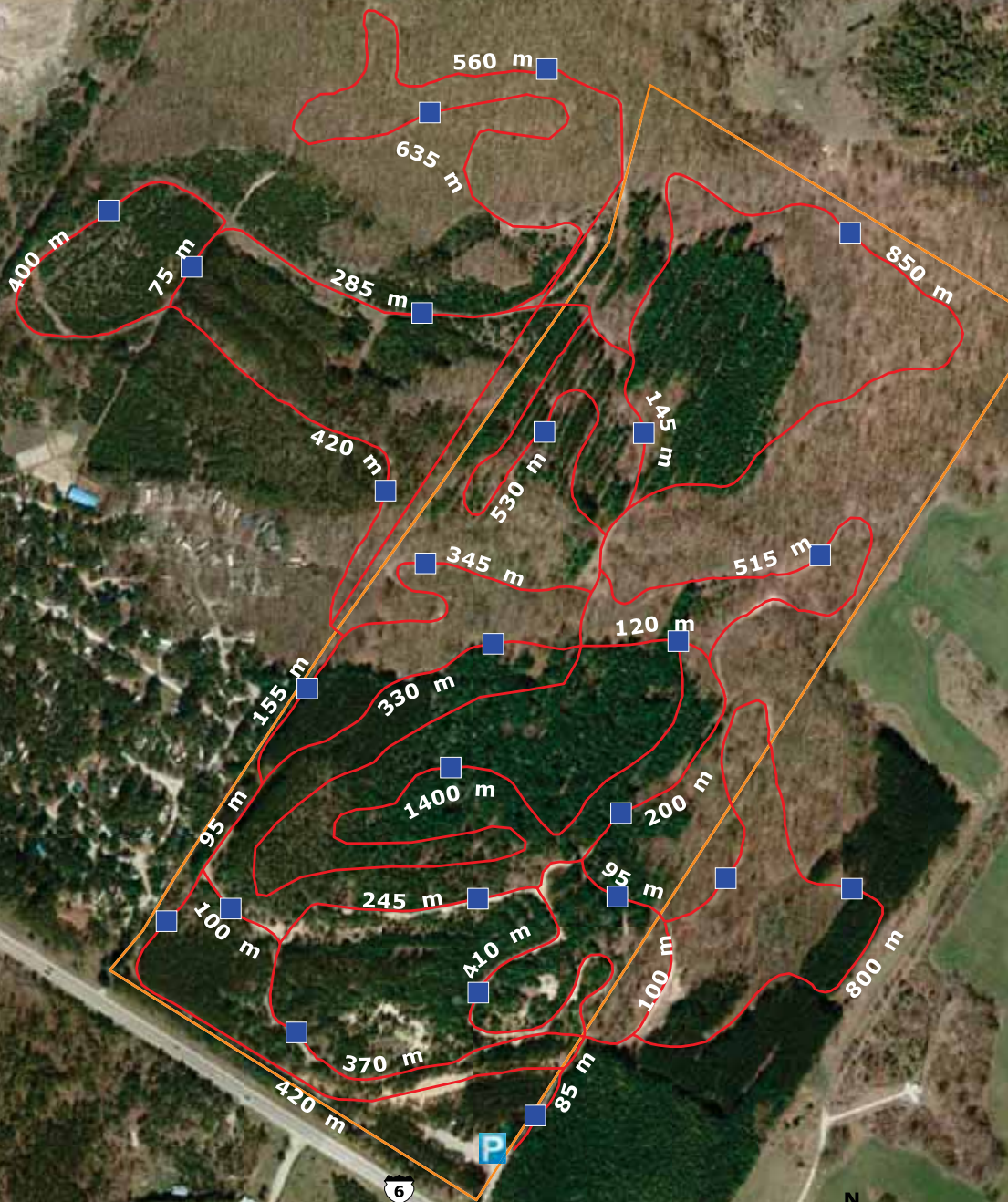
719521 Highway 6, East of Hepworth, see 8 on page 19

Entrance: X 490811.67 • Y 4941664.61 • Longitude -81.11 • Latitude 44.63

- Sand trails cut through rolling hardwood and evergreen forests
- Trail rating markers on map are for non-winter use only
- In Winter, the Sawmill Nordic Centre is part of the Bruce Ski Club. They host nordic skiing and snowshoeing. The trails are packed, groomed and trackset on a regular basis. There are trails for novice and advanced skiers, both classic and skate skiing. There is a lit loop for night skiing and snowshoe trails. To view the winter maps with specific trails and ratings or skiing fees, memberships and day passes visit:
<http://bruceskiclub.ca>
- Parking



0 250 m



Parking - All Year



Whispering Pines Trail



GSC Property Boundary

Trail Ratings



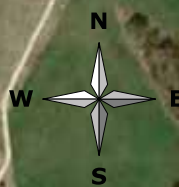
Easy



Moderate



Difficult

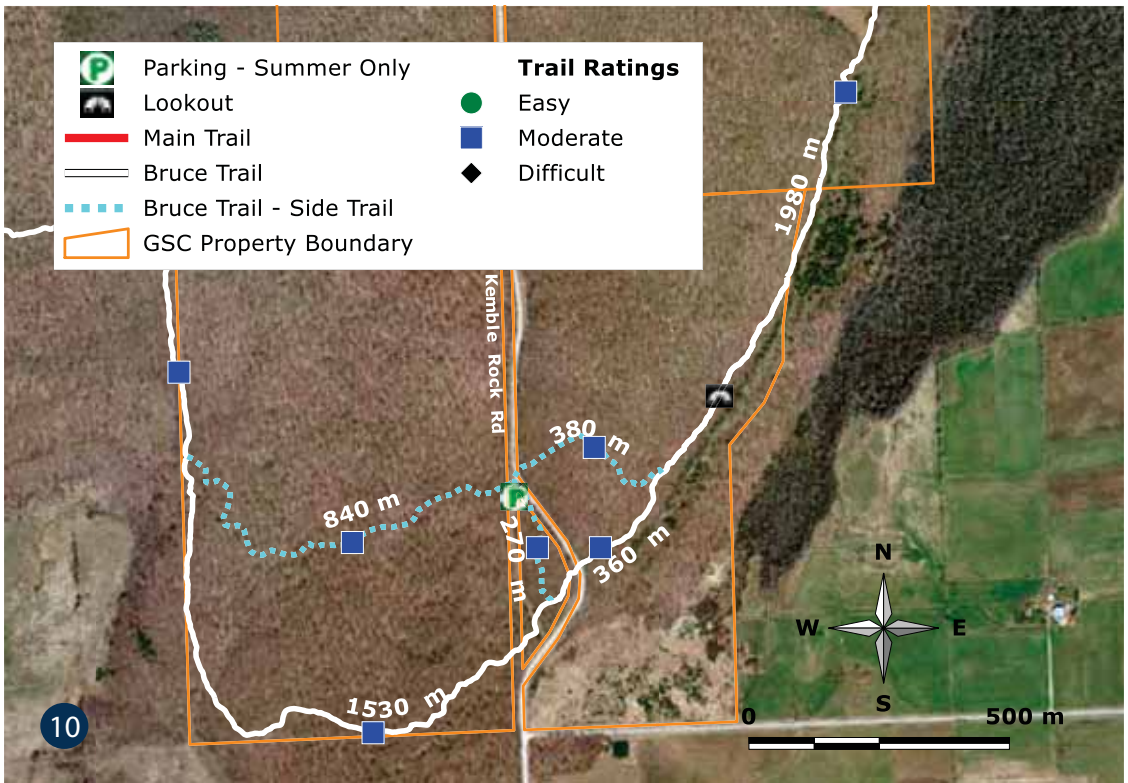


Kemble Mountain

Grey Road #1 north of Owen Sound, 4 km north of Kemble on Kemble Rock Road, see 10 on page 19

Entrance: X 505306.59 • Y 4954892.59 • Longitude -80.93 • Latitude 44.74

- Caution - High cliffs and steep slopes. Stay on trail and away from drop-offs.
- Hiking Trails through a mature hardwood forest with sugar maple trees, many species of ferns, birds and wildflowers
- As you hike the white blazed Bruce Trail on the escarpment near the Kemble Rock Road, look for a plaque placed in memory of Robert Samuel Edmonstone, former owner of this land
- Lookout over Owen Sound Bay to BalACLava and Coffin Ridge

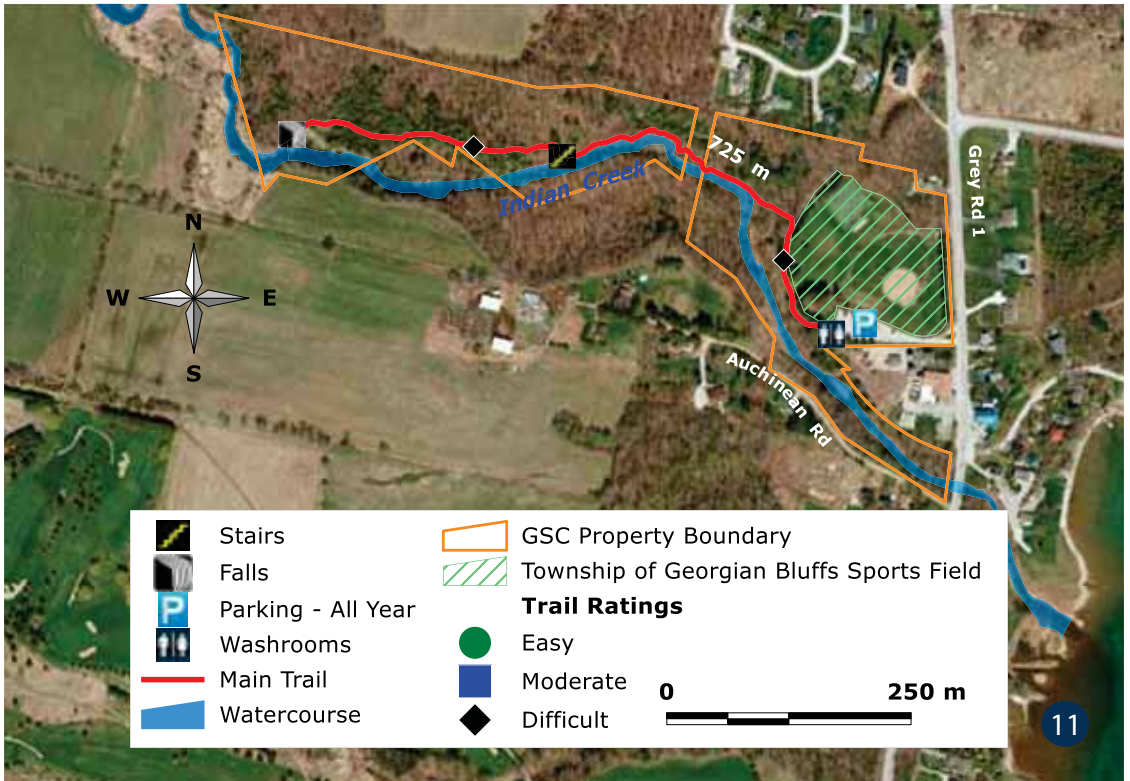


Indian Falls

318614 Grey County Road 1, see 11 on page 19

Entrance: X 504278.3 • Y 4940672.49 • Longitude -80.94 • Latitude 44.49

- Caution - High cliffs and steep slopes. Stay on trail and away from drop-offs.
- Rugged 0.7 km hike to 15 m waterfall (about 20 minutes)
- The horseshoe shaped waterfalls are typical of escarpment areas
- Waterfall is known to be a trickle in late August
- Trail may be inaccessible in spring due to high flows
- Parking is at sports fields
- Seasonal washrooms



Jones Falls & Pottawatomi

717875 Highway 6, Springmount , see 12 on map page 19

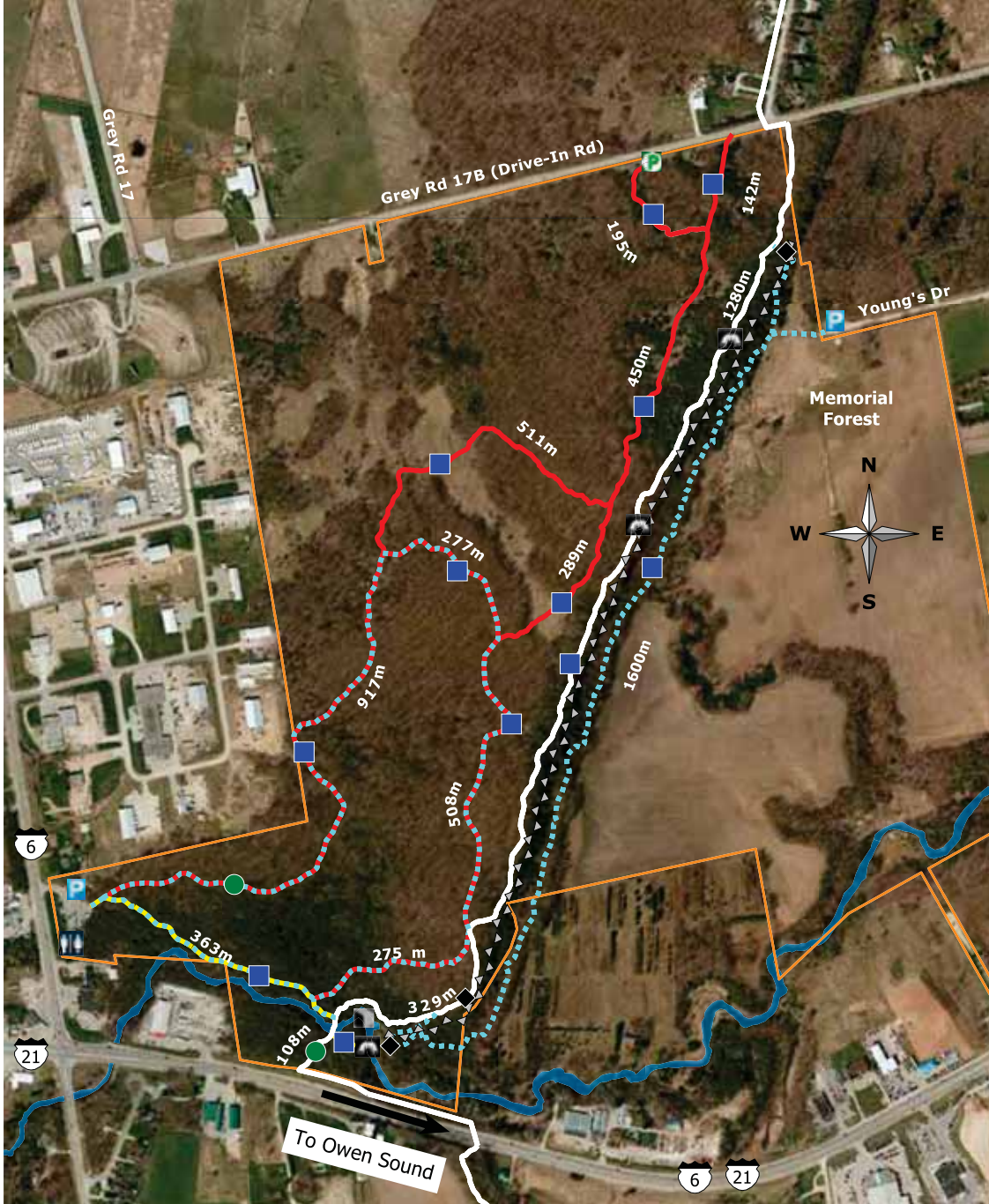
Entrance: X 500700.14 • Y 4934180.28 • Longitude -80.99 • Latitude 44.56

- Caution - High cliffs and steep slopes. Stay on trail and away from drop-offs.
- 12 m high waterfall and open deciduous woods with beautiful mossy rocks
- Multiple trail access points with parking
- 7 km of trails to hike (estimated time to hike 2 hours)
- Washrooms available when Owen Sound Transportation Company (OSTC) is open



Visitors can spend a few hours exploring this 287-acre property. The most direct path to the waterfalls is from the Owen Sound Transportation Company parking lot.

Experienced hikers with proper footwear can follow a challenging route to the bottom of the falls. Starting at the OSTC parking lot, the hike time is 15-25 minutes. Follow the blue-blazed trail to the right towards the falls but do not cross over the metal bridge to the falls lookout. Follow the Bruce Trail (white-blazed) and watch for the blue-blazed side trail on the right and venture down through a large crevice, a steep hill, over loose rock to the base of Jones Falls.



Jones Falls



Lookout



Parking - All Year



Parking - Summer Only



Washrooms



Escarpment Edge

Main Trail

Falls Trail

Bruce Trail

Bruce Trail - Side Trail

Watercourse

GSC Property Boundary

0

250 m

Trail Ratings



Easy



Moderate



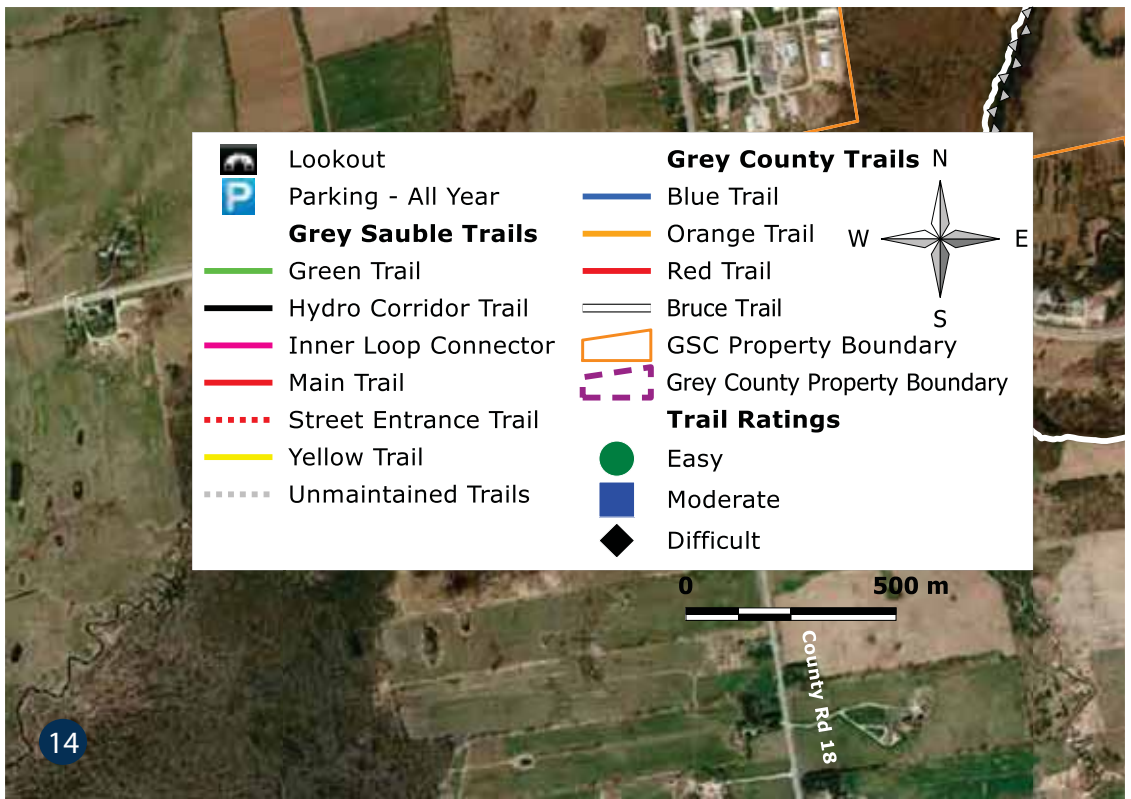
Difficult

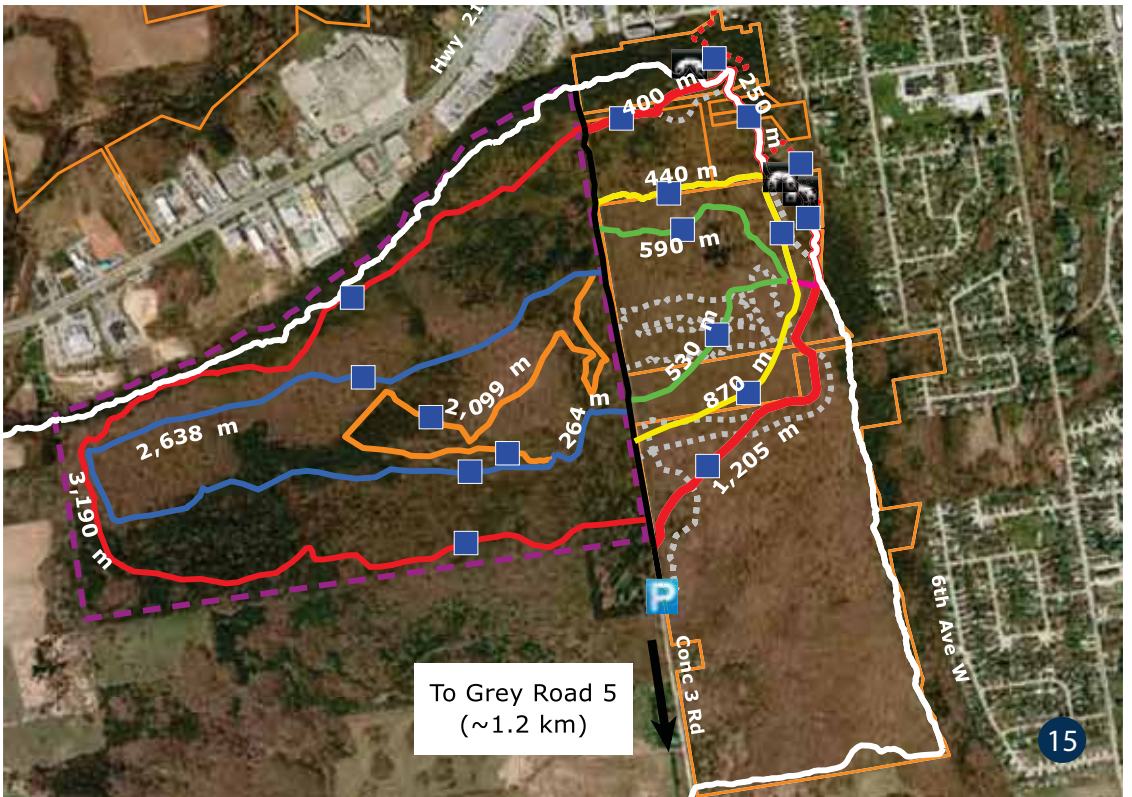
West Rocks

Grey Road #5, turn north onto Concession 3, park on right at dead end, see 14 on page 19

Entrance: X 503281.67 • Y 4933130.85 • Longitude -80.96 • Latitude 44.56

- Caution - High cliffs and steep slopes. Stay on trail and away from drop-offs.
- Lookouts over Owen Sound and Bay
- Bruce Trail access, more than 5 km of hiking trails
- Snowshoeing is popular on trails
- Two Access Points - Concession 3 and 7th Street West in Owen Sound or 9th Street West (West Hill)
- The Derby Tract is west of the hydro line and is owned by Grey County





The Arboretum & Administration Centre

237897 Inglis Falls Road, Owen Sound, see 16 on page 19

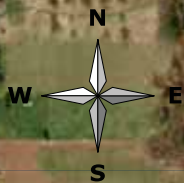
Entrance: X 504928.82 • Y 4931399.29 • Longitude -80.93 • Latitude 44.53

- 1.6 km of gentle Arboretum trails with benches and interpretive signage highlighting plant and tree species
- Arboretum Trees of the World Map available at: www.greysauble.on.ca
- Picnic pavilion (available for rent)
- Bruce Trail on this property leads to Harrison Park or to Inglis Falls
- Salmon spawning in Sydenham River in Fall
- Administration Centre and parking open all year (office hours 8:30 - 4:30) Monday to Friday)

During the summer, the Arboretum welcomes hikers and in the winter it is a snowshoer's paradise. Heading north from the Arboretum, you will enter into Harrison Park Campground. In the winter months, please use caution as a portion of the valley trail is shared as a snowmobile trail.

To hike to Inglis Falls, head south and east from the Arboretum, follow the blue trail into the forest and down a hill towards the river and over the arching pedestrian bridge. The trail from the bridge to Inglis Falls can be physically challenging and takes 35-60 minutes. In the Fall, near Thanksgiving, the Sydenham River is home to hundreds of salmon spawning to complete their life cycle. The Sydenham Sportsmen's Association have created multiple spawning channels along the river. The pink trail brings you to the spawning channels.





0 200 m



Parking - All Year



Administration Centre



Pavilion



Escarpment Edge



Arboretum Trail



Salmon Trail



Main Trail



Bruce Trail



Bruce Trail - Side Trail



Watercourse



GSCA Property Boundary

Trail Ratings



Easy



Moderate



Difficult



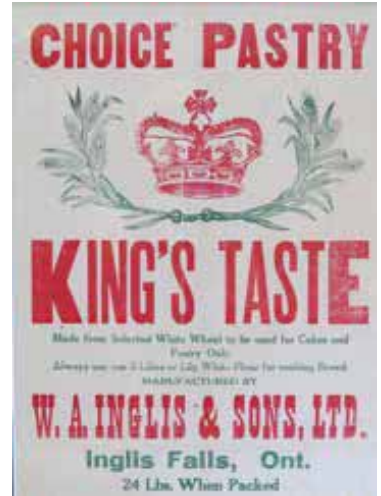
Inglis Falls

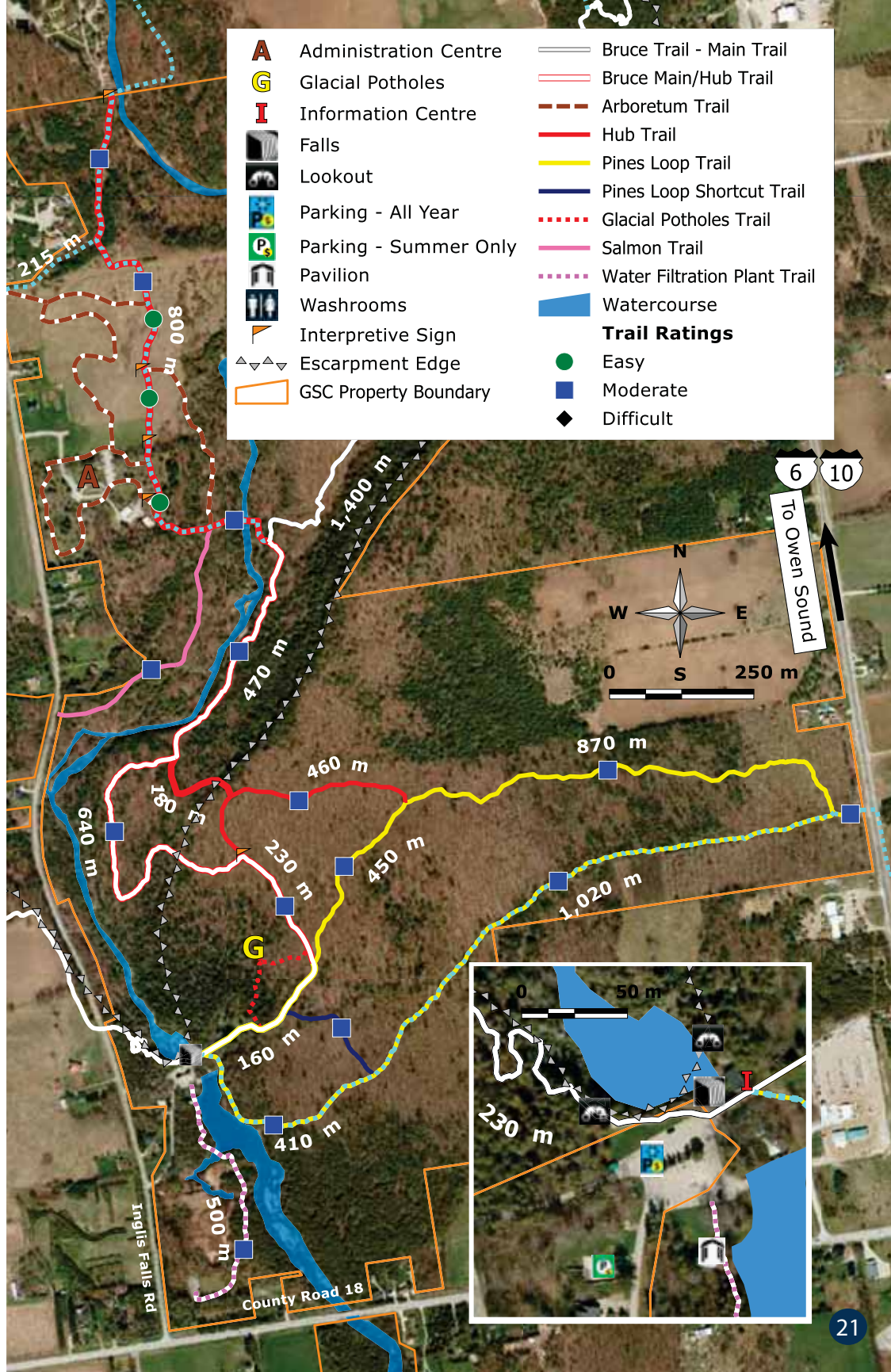


237785 Inglis Falls Road, Owen Sound, see 20 on page 19

Entrance: X 505110.39 • Y 4930264.39 • Longitude -80.93 • Latitude 44.52

- Caution - High cliffs and steep slopes. Stay on trail and away from drop-offs.
- 18 m high waterfalls
- Viewing platforms
- Picnic tables & pavilion overlooking mill pond
- Glacial Potholes
- Bruce Trail access
- Hiking and snowshoeing trails
- Interpretive plaques highlight the rich history of this site, including millstones from the 1860s when the four-storey mill produced flour, bran and shorts (animal feed). The Inglis family managed the mill and operation here for 87 years.
- Historic Water Filtration Plant is a popular stop. The trail for it begins near the pavilion.
- Open all year, with Information Centre and washrooms closed in winter.





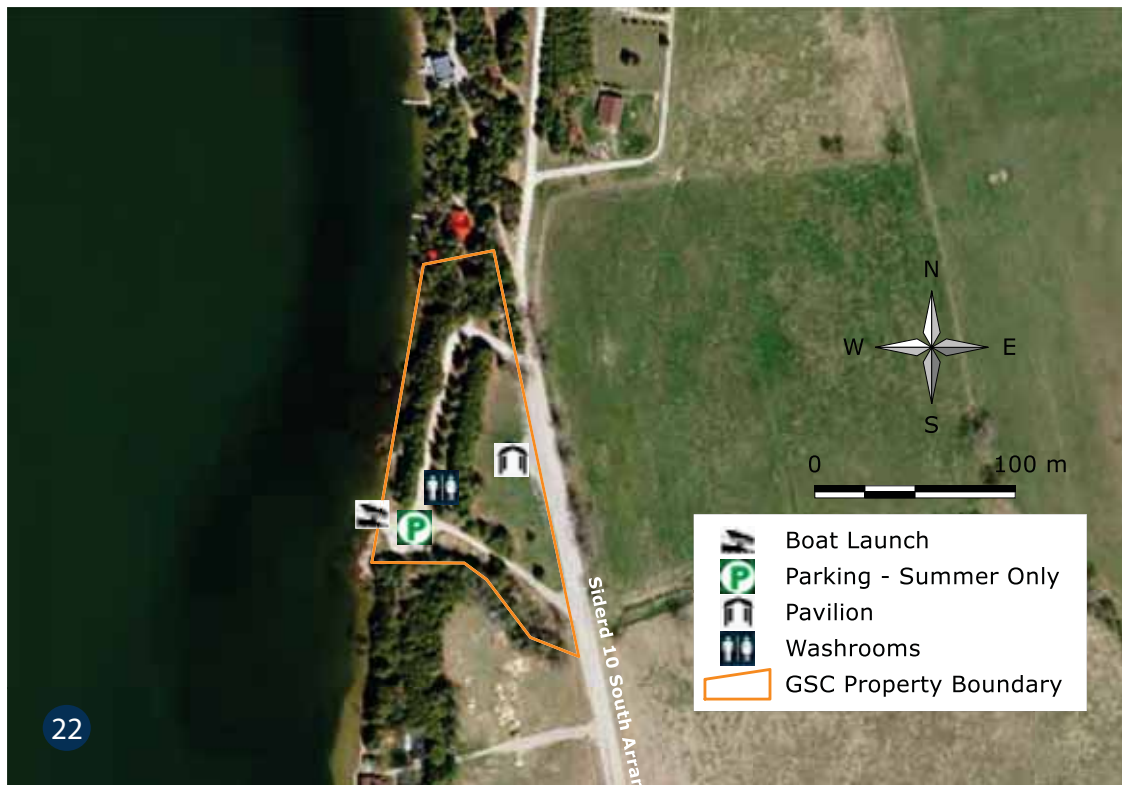
Arran Lake

1061 Sideroad 10S, south west of Allenford, see 22 on page 19

Entrance: X 488766.91 • Y 4956533.41 • Longitude -81.25 • Latitude 44.49

- Sand beach and swimming
- Boat launch (by donation)
- Picnic pavilion (available for rent)
- Parking
- Dock for swimming or fishing
- Seasonal washrooms
- Popular for birding/nature viewing

This is a warm water, shallow lake. It is a great spot for fishing with kids. Bring your picnic, fishing rod and tackle and try your hand at bringing in a "big catch". You can also set out in your boat/kayak/canoe or on a paddle board from the dock.



Hibou



359186 Grey County Road 15, see 23 on page 19

Entrance: X 507316.01 • Y 4940365.59 • Longitude -80.90 • Latitude 44.61

- Sand beach and swimming
- Hiking trails, with detailed guide and interpretive trail signage
- Connection to Tom Thomson Trail see www.tomthomsontrail.com
- The Friends of Hibou actively support and work to highlight this beautiful property
- Picnic tables & pavilions (available for rent)
- Winter parking and snowshoeing
- Seasonal washrooms



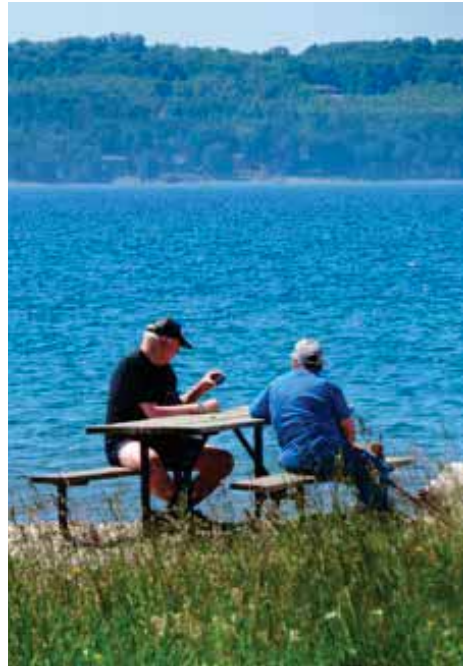
Ainslie Wood



359466 Bayshore Road, northeast of Leith, see 24 on page 19

Entrance: X 510095.60 • Y 4942058.55 • Longitude -80.87 • Latitude 44.63

- Rocky beach, swimming and fishing
- Picnic tables
- Pavilion (available for rent)
- Seasonal washrooms



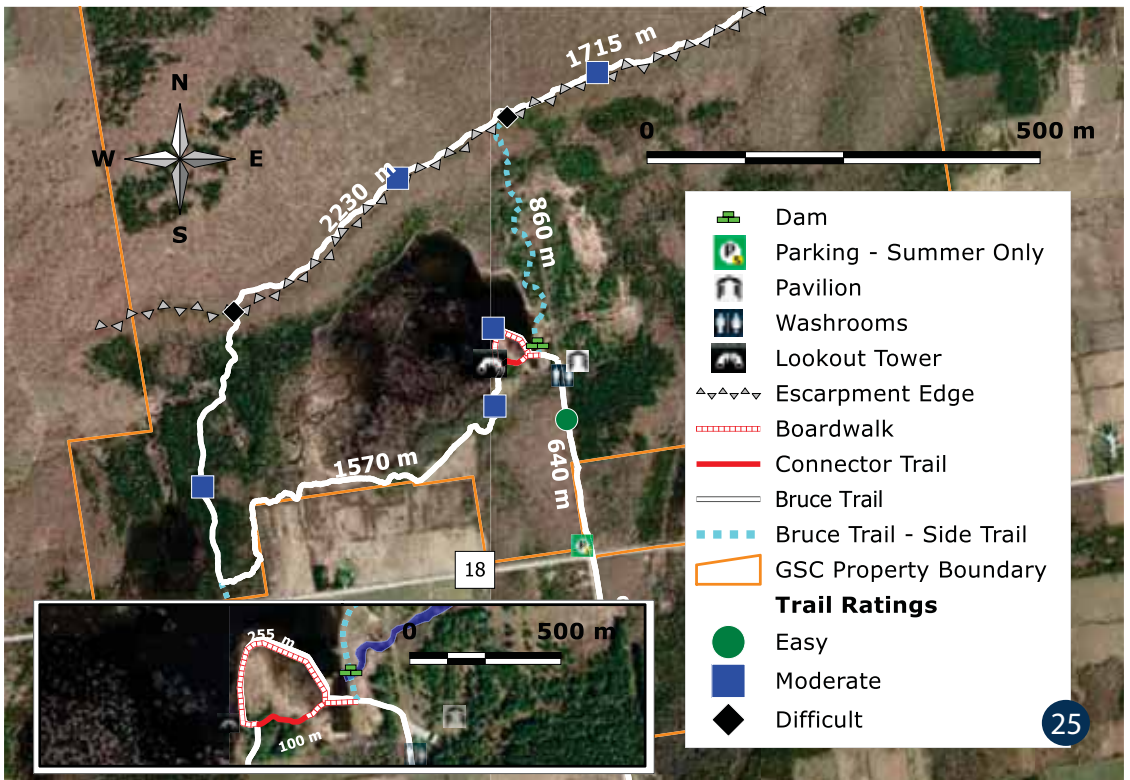
Bognor Marsh



104277 Grey Road 18, east of Rockford, see 25 on page 19

Entrance: X 517324.63 • Y 4931690.14 • Longitude -80.78 • Latitude 44.53

- Caution - High cliffs and steep slopes. Stay on trail and away from drop-offs.
- Boardwalk loop for a unique marsh area hike with birds, plants and aquatic species (see inset map)
- Some trails near marsh can be wet (waterproof footwear recommended)
- Partially floating boardwalk accommodates changing water levels
- Picnic pavilion (available for rent)
- Bruce Trail access for beautiful hike up and along the escarpment, overlooking marsh



Trout Hollow (Bighead River)

Across from Beautiful Joe Park, 162 Edwin Street West, see 26 on page 19

Entrance: X 532042.48 • Y 4938946.08 • Longitude -80.59 • Latitude 44.60

- Fishing and points of interest along trail
- Grey Sauble Conservation is one of many landowners who have partnered with trail leads to enable the Trout Hollow Trail*
- The 10.8 km Trout Hollow Trail takes you along the valley of the beautiful light blue Bighead River, where you can see a mixture of woodlands and meadows, as well as the remnants of past industries. Salmon, trout, deer, kingfishers and wild turkeys can be found during their active seasons. Interpretive signage on the Trail is found at the ruins of a sawmill, grist mill, hydro dam and powerhouse. The latter supplied electric power to Meaford in the early 1900's.



Trout Hollow, in the mid-1860's, was occupied by a sawmill, rake factory and cabin, owned and operated by the Trout Family from Meaford. John Muir, an early advocate for the preservation of wilderness who helped to preserve the Yosemite Valley and the Sequoia National Park, and founded the Sierra Club, worked at this sawmill from 1864-1866 before going back home to the U.S.

To learn more about John Muir visit: <http://www.johnmuir.org/canada/cfjm.html> maintained by "The Canadian Friends of John Muir." His story is told on trail signage. "He believed that mankind is just one part of an interconnected natural world, not its master, and that God is revealed through nature." Source: PBS National Park

*Private landowners are sharing their properties with the public; please stay on trail and pack out any litter.



Parking - All Year

Easy Trail

Moderate Trail

Hard Trail

GSC Property Boundary

Trail Ratings



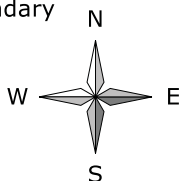
Easy



Moderate



Difficult



Points of Interest

- 1 - Grist Mill Ruins
- 2 - Old Town Dump
- 3 - White Oak Grove
- 4 - Power Dam Ruins
- 5 - Trout Hollow Sawmill & Pleasant Valley Grist Mills Ruins
- 6 - Flume Trail
- 7 - Power House Ruins
- 8 - Raceway Trail
- 9 - White Pine Plantation
- 10 - Site of Sing Sawmill & Old Gravel Pit

0 500 m



Town of Meaford

Miller St

Edwin St

13 Siderd

13 Siderd

7th Line

2,365 m

5,300 m

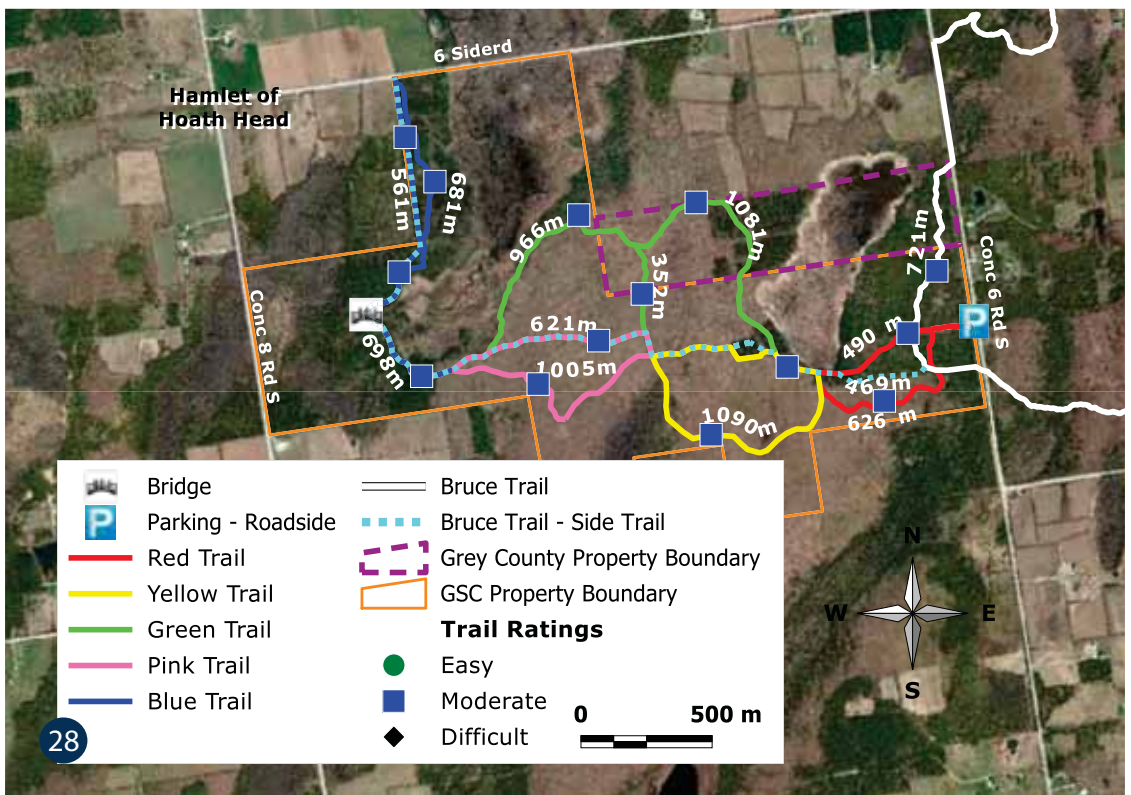
3,135 m

Massie Hills

497250 6th Concession Road South, see 28 on page 19

Entrance: X 515078.8 • Y 4928248.7 • Longitude - 80.81 • Latitude 44.50

- Over 8 km to hike, trail rating markers on map are for non-winter use only.
- In winter, this is the home of the Owen Sound Cross Country Ski Club. There is track-set grooming for classic cross country skiing.
- To view the winter maps with specific trails and ratings or skiing fees, memberships and day passes visit: www.massiehills.com
- Bruce Trail access and map signs at trail intersections
- All year access with roadside parking on Concession 6



Christie Beach

357604 Christie Beach Road, see 29 on page 19

Entrance: X 538499.52 • Y 4937948.99 • Longitude -80.51 • Latitude 44.59

- Sand beach and swimming
- This family friendly beach has access to Georgian Bay and great views of Cape Rich
- Picnic pavilion (available for rent)
- Seasonal washrooms
- Parking

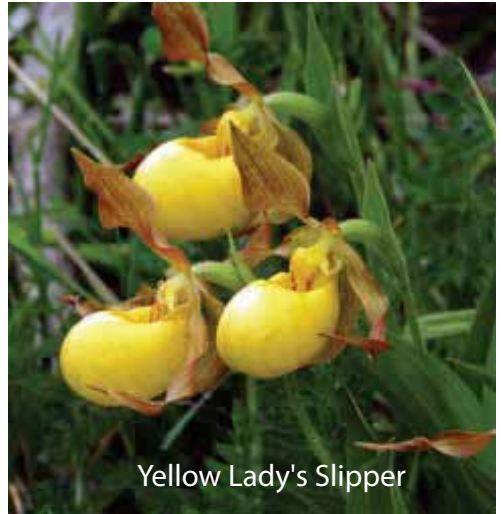


Peasemarsh

208525 Highway 26, see 30 on page 19

Entrance: X 546068.25 • Y 4932700.41 • Longitude -80.42 • Latitude 44.54

- Sand beach and swimming
- This Nature Preserve, owned by Grey Sauble Conservation and operated by The Town of The Blue Mountains
- Interpretive trail signage and parking
- Hiking trails and spring wildflowers
- Beautiful view of Nipissing Ridge
- Picnic tables



Yellow Lady's Slipper



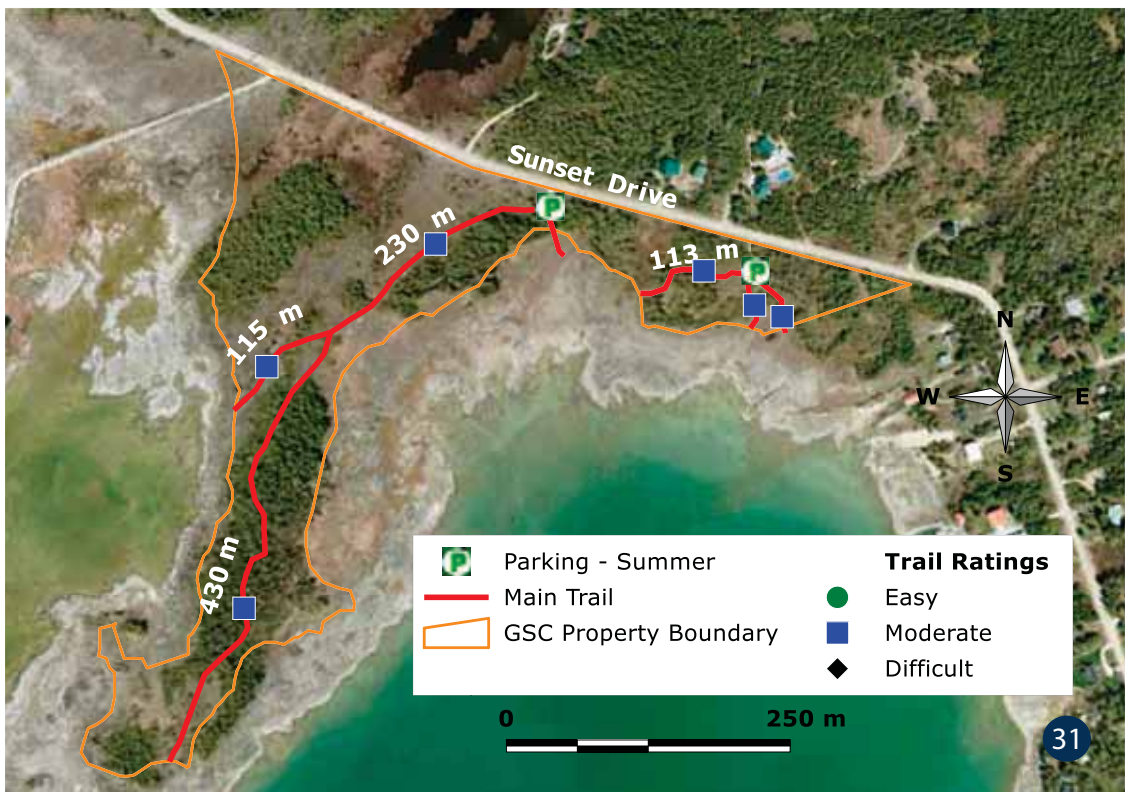
St. Jean Point

1390 Sunset Drive, Howdenvale, see 31 on page 19

Entrance: X 488766.91 • Y 4956533.41 • Longitude -81.25 • Latitude 44.49

- Swimming
- Rough wilderness trails
- Rocky shore on Lake Huron

This Nature Preserve is a peaceful and tranquil place for a hike. This property is for appreciation not recreation.



Old Baldy

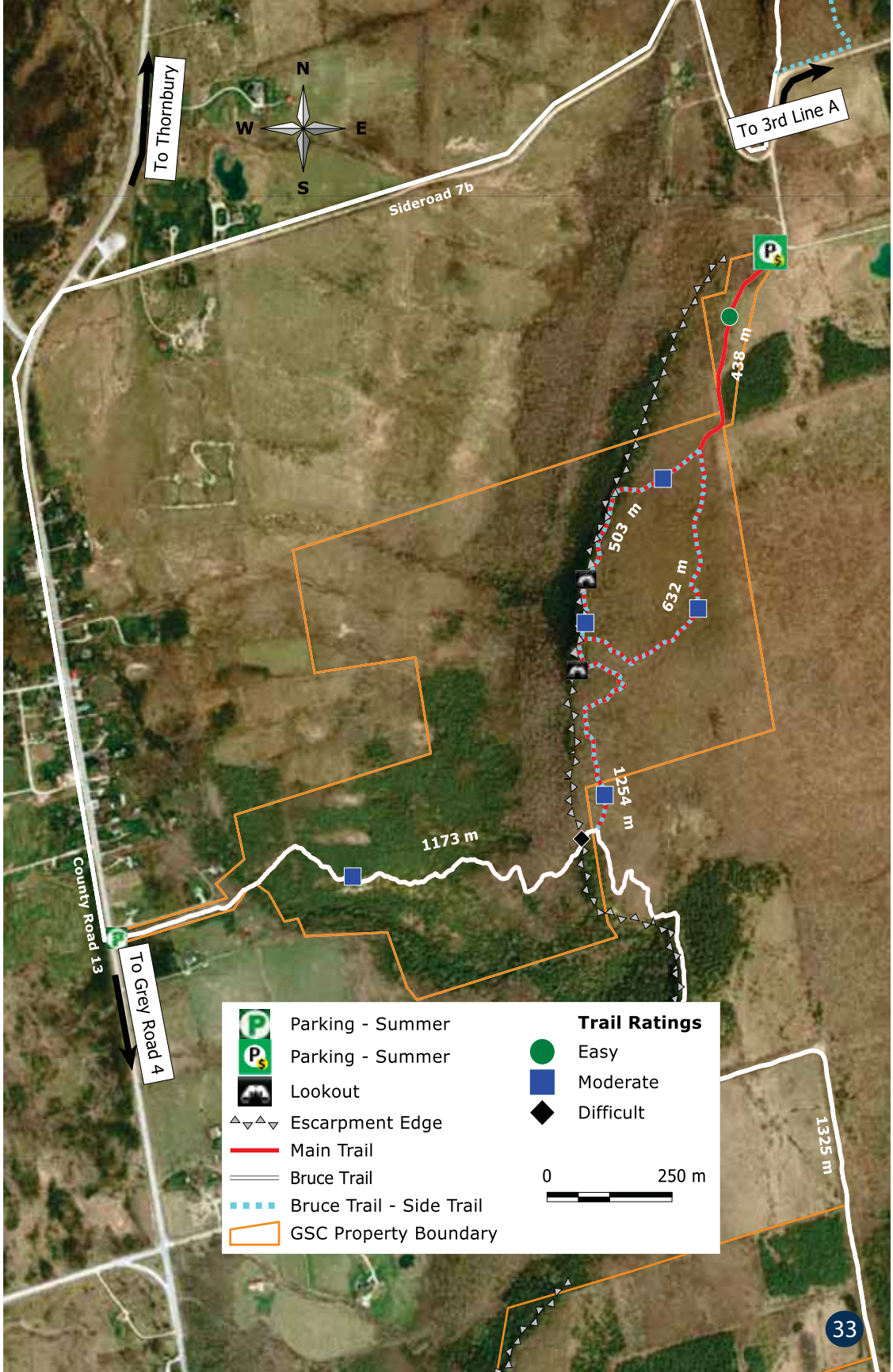













120 Old Baldy Access Road, east of Kimberley, see 32 on page 19

Entrance: X538363.52 • Y 4915563.84 • Longitude -80.51 • Latitude 44.39

- Caution - High cliffs and steep slopes. Stay on trail and away from drop-offs.
- Amazing panoramic views
- Hike or snowshoe an easy to moderate trail about 15 minutes from the parking lot to see a birds-eye view of the Village of Kimberley and the Beaver Valley, or enjoy longer outings on the other moderate to difficult trails.
- For rock climbing, a mandatory permit and waiver are required. Information at www.greysauble.on.ca
- The paid parking area is open dawn to dusk all year. Parking fees apply at all times. Please do not park on the entrance road or block entrances to adjacent properties.





	Parking - Summer		Easy
	Parking - Summer		Moderate
	Lookout		Difficult
	Escarpment Edge		
	Main Trail		
	Bruce Trail		
	Bruce Trail - Side Trail		
	GSC Property Boundary		

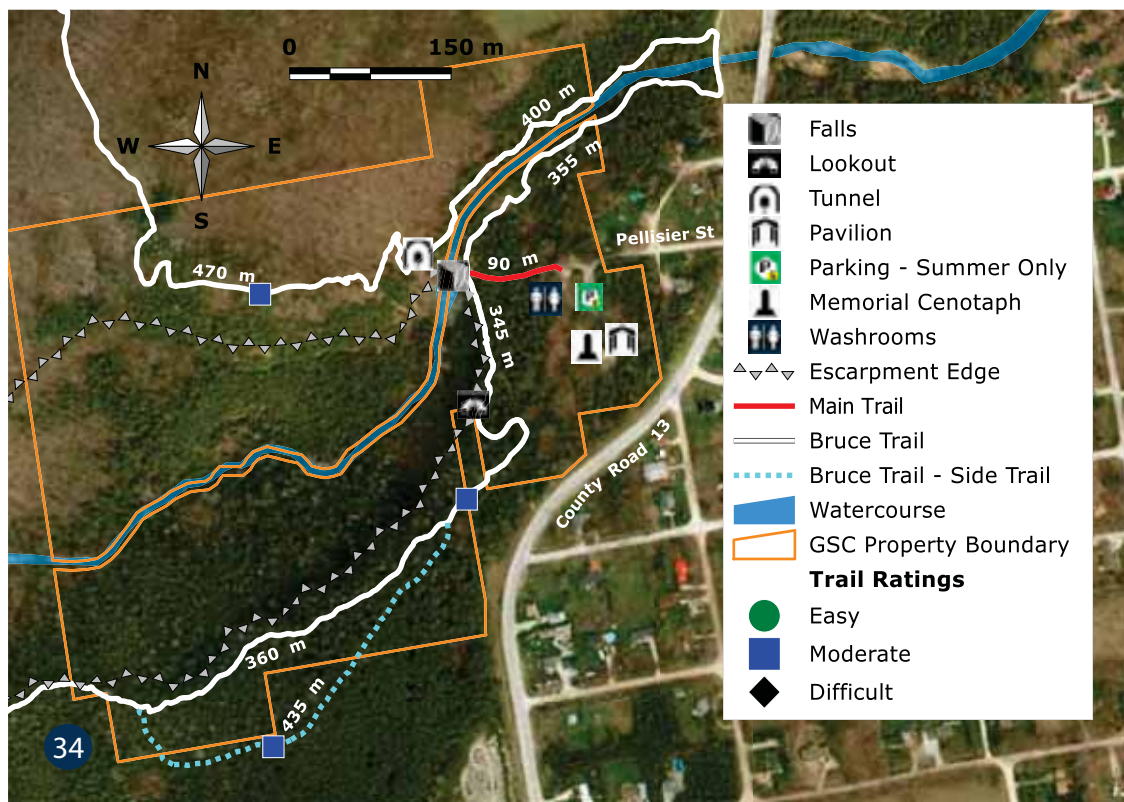
0 250 m

Eugenia Falls



Grey Road 13, 150 Pellisier Street, Village of Eugenia, see 34 on page 19
Entrance: X 537894.83 • Y 4906805.47 • Longitude -80.52 • Latitude 44.31

- Caution - High cliffs and steep slopes. Stay on trail and away from drop-offs.
- Picturesque 30 m waterfalls named for Princess Eugénie, wife of Napoleon III
- Bruce Trail access, interpretive plaques, memorial cenotaph, stone ruins of an 1895 power station and tunnel (penstock)
- Prior to the damming that created Lake Eugenia, the rushing water was reminiscent of a smaller Niagara Falls and was known as "Ke-waid-dun-dot" meaning sparkling waters (Source: Eugenia a Historic Treasure)
- Picnic pavilion (available for rent)
- Seasonal washrooms



Feversham Gorge

Madeleine Graydon Memorial

494234 Grey Road 2, Village of Feversham, see 35 on page 19

Entrance: X 550284.96 • Y 4911363.02 • Longitude -80.36 • Latitude 44.35

- Caution - High cliffs and steep slopes. Stay on trail and away from drop-offs.
- Views of a dolostone gorge that cradles the Beaver River
- Interpretive plaque highlights Madeleine Graydon and the array of plants and mosses that exist in the unique habitat created by the vertical dolostone walls and the movement of water
- Find the wooden staircase with natural springs from the escarpment side along trail
- The trail takes you near the gorge floor to see the clear water flowing below. This area can be wet, with challenging footing and a small rock wall to scale.



Property Name	Waterfall	Lookout	Beach	Pavilion*	Winter Parking	Seasonal Toilets	Hiking
Ainslie Wood			Rocky	x		Yes	
Arboretum & Administration Centre				x	Yes	All year 8:30-4:30 Mon-Fri	x
Arran Lake			Sand	x		Yes	
Bognor Marsh		x		x	Yes	Yes	x
Bruce's Caves				x		Yes	x
Christie Beach			Sand	x		Yes	
Colpoy's Lookout		x					
Eugenia Falls	x	x		x		Yes	x
Feversham Gorge & Madeleine Graydon						Yes	x
Hepworth					Yes❄️	Yes	x
Hibou			Sand	xx	Yes	Yes	x
Indian Falls	x				Yes	Yes	x
Inglis Falls	x	x		x	Yes	Yes	x
Epping - John Muir Lookout		x		x		Yes	x
Kemble Mountain							x
Massie Hills					Yes❄️		x
Old Baldy		x			Yes		x
Peasemarsch			Sand			Yes	x
Pottawatomi & Jones Falls	x	x			Yes	All Year OSTC	x
Spirit Rock & McNeill Estate		x				Yes	x
St. Jean Point			Rocky				x
The Glen		x					x
Trout Hollow (Bighead River)					Yes		x
West Rocks		x					x

* Contact us to rent and reserve a pavilion for your next group event.

❄️ Additional charge applies in winter at these two locations.

**For more information about Grey Sauble Conservation Areas
visit: www.greysauble.on.ca**

What is a Conservation Authority?

Conservation Authorities are:

- created by municipalities under the Conservation Authorities Act;
- based on watersheds that cross municipal boundaries; and
- municipalities appoint the Board of Directors, who direct programs "to further the conservation, restoration, development and management of natural resources in watersheds".

Over the last 60 years, Grey Sauble Conservation (GSC) Staff have demonstrated enduring commitment to conservation and developed deep knowledge about our area, coupled with progressive use of technology.

- GSC protects people and habitats while supporting strong communities
- GSC issues timely development permits, supports municipalities in setting Official Plans and commenting on natural heritage features
- GSC is the Lead Authority for Source Water Protection in our Region
- GSC has some of the best local mapping available

Your Support = Improvements in our Watershed

- | | |
|--------------------------------------------------------------------------------------------------------------|----------------------------------------------------------------------------------------------------------------|
| • Purchasing a Parking Pass or Season Pass | • Improving Trails & Washrooms |
| • Donating, through our GSC Foundation | • Planting Trees |
| • Annual Spring Tree & Plant Sale | • Surveying for Species at Risk |
| • Using Grey Bruce Forestry Service | • Addressing Invasive Species |
| • Volunteering (please contact: volunteer@greysauble.on.ca) | • Delivering Stewardship Projects |
| | • Monitoring and improving water quality and advising public when to prepare for flooding or low water volumes |

To provide helpful input for the next version of this brochure, email us: explore@greysauble.on.ca

Poison Ivy



POISON IVY

Leaf of Three, Let it Be!

An oil called urushiol (you-Roo-shee-all) is found on poison ivy, poison oak and poison sumac. When the oil comes in contact with your skin, it will cause an itchy, blistering rash. Protect yourself and your pet. Stay on the trails and leash your pet!

The Naturalist's Code

Move nothing.

Step on nothing but the path.

Take nothing but photographs.

Leave nothing but your thanks.



PLAN AHEAD TO HAVE A GREAT ADVENTURE

Grey Sauble properties have trails that range from flat and gentle to rocky and steep with 60m or more drop-offs. Check the property maps to help pick the trail that best matches with you and your group. A well planned adventure can create positive memories that will last forever.

- **Stay on marked trail and away from drop-offs.** If you believe that you've gone off course, retrace your steps back to the last trail marking. Stay in one place if you become lost or separated from your group.
- Be alert for dangers, especially when travelling with children or pets – poisonous plants, wildlife, cliff edges, crevices and uneven ground.
- Pack a hike kit – water, snacks for energy, sunscreen, compass, hat, rain poncho, cell phone (reception may not be available), map, insect repellent, and first aid kit. Please pack out all garbage.
- Be aware of weather conditions and reports.
- Be aware of sunset and how many hours you have before night to avoid getting caught in the dark.
- Always hike with a partner. If you must hike solo, share your plans and route in advance and check in.
- Avoid hiking in areas that permit hunting during the hunting seasons, particularly the deer rifle season during the first full week of November. If out, be aware and visible by wearing blaze orange clothes and hats. If backpacking cover your pack in blaze orange.
- Wear safety equipment as appropriate and adjust your speed to your ability, the trail conditions and season.



237897 Inglis Falls Road, RR#4
 Owen Sound, Ontario N4K 5N6
 P: 519-376-3076 • F: 519-371-0437
 Web: www.greysauble.on.ca