



Grey Sauble Conservation Authority

R.R. #4, 237897 Inglis Falls Road

Owen Sound, Ontario N4K 5N6 (519) 376-3076; ext. 234

t.lanthier@greysauble.on.ca

The next regular meeting of the Grey Sauble Conservation Authority Board of Directors is scheduled for Wednesday, July 22nd, 2020, at 1:15 p.m. The regular meeting meeting will occur via the Webex web-based application. Please notify Tim Lanthier if you are unable to attend.

Directors

Burley, Dwight
Carleton, Sue
Greig, Ryan
Greig, Scott
Little, Cathy
Koepke, Marion

Mackey, Scott
McKenzie, Paul
Matrosovs, Andrea
Greenfield, Harley
Vickers, Paul

Honourary Members

Elwood Moore
Betty Adair

Ling Mark, MECP
Katona, Keley, MECP
Lara Oosting, MNRF, Peterborough
Tracy Allison, MNRF, Owen Sound
Bill Walker, M.P.P., Bruce Grey Owen Sound
Alex Ruff, M.P., Bruce Grey Owen Sound
Terry Dowdall, M.P., Simcoe-Grey
Jim Wilson, M.P.P., Simcoe-Grey



***Grey Sauble Conservation Authority
R.R. #4, 237897 Inglis Falls Road
Owen Sound, Ontario N4K 5N6 (519) 376-3076
t.lanthier@greysauble.on.ca***

The next regular meeting of the Grey Sauble Conservation Authority Board of Directors is scheduled for Wednesday, July 22nd, 2020, at 1:15 p.m., via the Webex web-based application. Public viewing of this meeting will be available via a live stream on youtube at:

https://www.youtube.com/channel/UCy_ie5dXG8aFYDYGe8tV9Yg/videos.

Please note that this is a Notice of Meeting only for your information.

**The Sun Times
Bayshore Broadcasting
The Meaford Independent
The Dock
The Wiarton Echo
The Advance
The Post
The Thornbury Paper
The Hub Owen Sound
Blue Mountains Review
South Grey News
Collingwood Today**



237897 Inglis Falls Road, R.R.#4, Owen Sound, ON N4K 5N6
Telephone: 519.376.3076 Fax: 519.371.0437
www.greysauble.on.ca

AGENDA

**Grey Sauble Conservation Authority
Full Authority Meeting
Wednesday, July 22nd, 2020 at 1:15 p.m.**

- 1. Call to Order**
- 2. Disclosure of Pecuniary Interest**
- 3. Call for Additional Agenda Items**
- 4. Adoption of Agenda**
- 5. Approval of Minutes**
 - i) Full Authority – May 27th, 2020 – **Attachment #1**
- 6. Business Out of Minutes** – nothing at this time
- 7. Consent Agenda – Resolution**
 - i) Environmental Planning – Section 28 Permits – May 2020 – **Attachment #2**
 - ii) Administration – Receipts and Expenses – May 2020 – **Attachment #3**
 - iii) Correspondence – Letter from Wayne Emerson, Chair, Conservation Ontario re: Federal Stimulus Opportunities – **Attachment #4**
 - iv) Other Minutes – nothing at this time
- 8. Business Items**
 - i) Administration
 - a) Update on COVID-19 related Business and Operations Status – Information – (10 min)
 - b) Second Quarter Financial Update and Forecast – Information – **Attachment #5** (15 min)
 - ii) Water Management
 - a) Bothwell Creek Subwatershed Report Card – Information – **Attachment #6** (20 min)
 - iii) Environmental Planning – nothing at this time
 - iv) Conservation Lands
 - a) Update on Re-Opening of GSCA Properties to Public Access – Information – (5 min)

AGENDA

Grey Sauble Conservation Authority

Full Authority Meeting

Wednesday, July 22nd, 2020 at 1:15 p.m.

b) Eugenia Falls Management Plan – Information – **Attachment #7** (30 min)

c) Hibou Conservation Area Playground Equipment Update – Information – **Attachment #8** (20 min)

v) Forestry – nothing at this time

vi) Communications/Public Relations – nothing at this time

vii) Education – Enbridge Grant – Information – (10 min)

viii) GIS/IT – nothing at this time

ix) DWSP/RMO Report – nothing at this time

9. CAO's Report (10 minutes)

10. Chair's Report (10 minutes)

11. Other Business – Nothing at this time.

12. Closed Session – nothing at this time

13. Next Full Authority Meeting – Wednesday, August 26th, 2020, at 1:15 p.m.

14. Adjournment



Grey Sauble Authority Board of Directors

MOTION

DATE: July 22nd, 2020

MOTION #: FA-20-056

MOVED BY: _____

SECONDED BY: _____

THAT the Grey Sauble Conservation Authority Board of Directors approve the agenda of July 22nd, 2020.



**GREY SAUBLE CONSERVATION AUTHORITY
MINUTES
Full Authority Board of Directors
Wednesday, June 24, 2020, at 1:15 p.m.**

The Grey Sauble Conservation Authority Board of Directors meeting was held via the internet on the meeting application, WebEx.

1. Call to Order

Chair Cathy Little called the meeting to order at 1:15 p.m.

Directors Present – Chair Cathy Little, Dwight Burley, Sue Carleton, Harley Greenfield, Ryan Greig, Vice Chair Scott Greig, Marion Koepke, Scott Mackey, Andrea Matrosovs, Paul McKenzie, Paul Vickers

Staff Present – Tim Lanthier, Nancy Guest, Gloria Dangerfield, Alison Armstrong, John Bittorf, Andy Sorensen

Also Present – Sue Bragg, Baker Tilly Licensed Public Accountants; Esme Batten, Nature Conservancy of Canada

2. Disclosure of Pecuniary Interest

The Directors were reminded to disclose any pecuniary interest that may arise during the course of the meeting. No disclosures of pecuniary interest were expressed at this time.

3. Call for Additional Agenda Items – none

4. Adoption of Agenda

The CAO advised that two amendments were made to the Agenda:

- Item 7 – Business out of Minutes, was moved above Item 6 – Consent Agenda; and,
- Item 10(i)(b) was removed and the motion added to Item 8, since they are directly related.

Motion No.:
FA-20-048

Moved by: Dwight Burley
Seconded by: Harley Greenfield

THAT the Grey Sauble Conservation Authority Board of Directors approve the Agenda of June 24th, 2020, as revised.

Carried

5. Approval of Minutes

Motion No.:
FA-20-049

Moved by: Andrea Matrosovs
Seconded by: Marion Koepke

THAT the Grey Sauble Conservation Authority Board of Directors approve the minutes of May 27th, 2020.

Carried

6. Business Out of Minutes – None

7. Consent Agenda

Motion No.:
FA-20-050

Moved by: Dwight Burley
Seconded by: Scott Mackey

THAT in consideration of the Consent Agenda Items listed on the June 24th, 2020, agenda, the Grey Sauble Conservation Authority Board of Directors receives the following items: i) Environmental Planning - Section 28 Permits – May 2020; ii) Administration - Receipts & Expenses – May 2020; iii) Correspondence: a) Letter from CO and multiple signatories to Prime Minister Trudeau regarding the Value of Natural Infrastructure as an Integral Part of Green Recovery – May 20, 2020; b) Letter from CO to Minister Yurek regarding Next Steps in the Conservation Authorities Act Review – June 3, 2020.

Carried

8. Deputation

Sue Bragg, of Baker Tilly Licensed Public Accountants, reviewed the Financial Report dated December 31, 2019, and advised that these are draft financial statements pending Board approval, and the highlights are a point in time, being December 31, 2019. The report is qualified by the economic effects of the COVID-19 pandemic, which could adversely affect the Authority's revenues and collections. This situation is being actively monitored; however, the full effect of the possible impacts could not be quantified at this time.

Motion No.:
FA-20-051

Moved by: Marion Koepke
Seconded by: Dwight Burley

THAT the Grey Sauble Conservation Authority Board of Directors accept the draft financial report for 2019 as prepared by Baker Tilly, Licensed Public Accountants.

Carried

9. Deputation

Esme Batten, Midwestern Ontario Program Director for the Nature Conservancy of Canada (NCC), reviewed their report dated June 12, 2020 and discussed the work being done by the NCC in collaboration with various conservation authorities and municipalities respecting invasive species. The NCC has received a grant of \$727,000 to manage several invasive species (phragmites, garlic mustard, buckthorn and dog strangling vine) within the Saugeen Bruce Peninsula area north of Highway 21. NCC hopes to partner with various organizations, including GSCA, to augment the work planned by the NCC.

Motion No.:
FA-20-052

Moved by: **Scott Mackey**
Seconded by: **Dwight Burley**

WHEREAS GSCA has been approached by the Nature Conservancy of Canada (NCC) to partner with them and other stakeholders on combating invasive species within the watershed;

AND FURTHER WHEREAS one of Grey Sauble Conservation Authority's (GSCA) Strategic Plan Goals is to work with partners to enhance GSC land management and natural heritage preservation of the watershed;

AND FURTHER WHEREAS the presence and prevalence of invasive species undermines that natural ecosystems within the watershed;

AND FURTHER WHEREAS under Section 21(1) of the Conservation Authorities Act, GSCA has the following powers: (f) to enter into agreements for the purchase of materials, employment of labour and other purposes as may be necessary for the due carrying out of any project or to further the authority's objects; (g) to enter into agreements with owners of private lands to facilitate the due carrying out of any project; (n) to collaborate and enter into agreements with ministries and agencies of government, municipal councils and local boards and other organizations and individuals;

THAT the Grey Sauble Conservation Authority enter into a memorandum of understanding with NCC to assist with combating invasive species, which may include contracting licensed pesticides applicators.

Carried

10. Business Items

i) Administration

a) Update on COVID-19 related Business and Operations Status

The CAO advised that this matter will be a running item on upcoming meeting agendas as the government continues to re-open. The CAO is keeping abreast of the changes and Staff continue to work remotely at this time. The Phase 2 reopening does not include most of the Authority functions, but the plan to return to working in the office continues when health and safety matters are in place. Currently, the plan includes one staff member per

floor per day and future planning includes possibly 2 staff members per floor per day as functions return to “normal”.

Because of the COVID-19 pandemic, the difficult decision was made to cancel summer day camp. It became obvious that health and safety issues were too onerous to be financially feasible and Staff continues to monitor opportunities that are consistent with other resources.

Planning applications are less than this time last year, however permit applications have increased. It is expected that planning applications will begin to increase as areas reopen. Parking fees at various properties are less but there was a substantial increase in June as visitors were allowed access again.

The Operations Department has been increasing its presence at properties respecting maintenance, however, there is no gate staff planned at this time. Staffing is being planned at certain sites to assist visitors with electronic payment for entry, as well as monitoring compliance. The hiring of a permanent Manager of Conservation Lands, as well as an Administrative Assistant is a high priority.

ii) Water Management

a) Rankin Dam Update

Water Resources Coordinator, John Bittorf, reviewed a PowerPoint presentation respecting the Operation History and Proposed Changes with respect to the Rankin Dam located on the Rankin River between Boat Lake and Sauble Beach.

Water management and flood forecasting are generally proceeding as per normal.

iii) Environmental Planning and Regulations

a) Update on Shoreline Workshops and Municipal Collaboration

Environmental Planning Coordinator, Andy Sorensen, advised that workshops conducted in February 2020 are available for viewing online. After consultations with the Works Departments of Blue Mountains and Georgian Bluffs, a Frequently Asked Questions (FAQ) sheet has been developed for users and a Staff presentation respecting the permitting process is available on the GSCA website. Regulations mapping is continuing to be updated. All planning staff are successfully working remotely with individual cell phones and email contact and have been making site visits within the social distancing guidelines.

Respecting shoreline management plans, in some instances, the Ministry of Natural Resources and Forestry as well as the Department of Fisheries and Oceans Canada have been involved in the process and some municipalities have included shoreline management plans directly into their zoning bylaws.

Water levels have been above the average highwater level and in cases where a building may be threatened because of high water, GSCA will recommend that a landowner consult a coastal engineer to assist in designing a safe setback. At all

times, if given the opportunity, GSCA will recommend the farthest setback from the water as is necessary.

b) Annual Regulations Mapping Changes Update

The Environmental Planning Coordinator advised that the most recent annual update of regulation mapping guidelines was approved in 2017. Manager of Information Services, Gloria Dangerfield, reviewed the mapping updates and advised that it is more logical for the Board to approve the process for updating rather than the actual updates, which change on a regular basis.

iv) Conservation Lands

a) Update on Reopening of GSCA Properties to Public Access

The CAO advised that all properties are open to the public with the exception of Eugenia Falls. Full-time staff is planned for certain properties to assist with parking fees, direction, monitoring, etc. It appears that COVID-19 has altered the timing of use of the properties and GSCA is working with the Counties respecting this change. The possibility of engaging volunteers as “ambassadors” has been discussed.

v) Forestry

No new information at this time

vi) Communications and Public Relations

No new information at this time

vii) GIS/IT

a) Final IT Policy

Manager of Information Services, Gloria Dangerfield, advised that she and Network Administrator, Les McKay, prepared an up-to-date comprehensive Information Management & Technology (IM/IT) policy to ensure the appropriate collection, use, storage, accessibility, privacy, security and integrity of GSCA information, and bring the IM/IT Department in line with the requirements of the Risk Management Guidelines previously approved by the Board. This policy includes a list of all equipment, including location, and allows the Department to stay current with all electronic assets.

Motion No.:
FA-20-053

Moved by: Andrea Matrosovs
Seconded by: Sue Carleton

WHEREAS Grey Sauble Conservation Authority has a fully integrated, networked workplace, that requires guidelines for administrators and users to ensure the appropriate collection, use, storage, accessibility, privacy, security and integrity of its information;

AND FURTHER WHEREAS risks to the safety of the information assets and integrity of GSCA will be greatly reduced by the implementation of the Information Management & Technology Policy.

AND FURTHER WHEREAS this policy will bring the Information Management & Technology Department in line with the requirements of the Risk Management Guidelines, approved in 2018;

THAT the Grey Sauble Conservation Authority Board of Directors accept and endorse the Final Information Management & Technology Policy.

Carried

b) Board of Directors' Sharepoint Website

Manager of Information Services, Gloria Dangerfield, demonstrated the sharepoint site available to the Board of Directors members on the GSCA website at www.greysauble.on.ca, explained how to access the site, including the calendar and other helpful information.

viii) Drinking Water Source Protection & Risk Management

Nothing to report at this time.

11. CAO's Report

The CAO reported that a new employee benefits plan with a non-profit benefits trust, CSBT, became effective June 1, 2020 and provides better benefits for employees and costs less annually for GSCA.

Further to a previous presentation to the Board regarding the Positively Green partnership, the Greenbelt Foundation has asked partners to re-frame our proposed projects in light of climate change, flood reduction and green infrastructure, with a goal of aligning with COVID recovery priorities. This is expected to better position these projects to receive funding.

The CAO advised that he met with the new General Manager/Secretary-Treasurer of Saugeen Valley Conservation, Jennifer Stephens, Maitland Valley Conservation General Manager – Secretary Treasurer, Phil Beard, and Ted Briggs of the Ministry of Environment, Conservation and Parks, London Office, respecting the Healthy Lake Huron project. It is hopeful that this project will translate into stewardship or green infrastructure funding.

Director Marion Koepke and CAO Tim Lanthier met with the new Owen Sound City Manager, Tim Simmonds, at the GSCA arboretum to introduce Mr. Simmonds to the GSCA amenities.

Other activities include a possible solution to the Peasemarsch drain matter, which will be updated when finalized.

The "Please Bring Me Home" group engaged in finding missing person, Lisa Maas, has agreed to clean garbage out of a crevice on GSCA's Bognor Marsh property where the group believes there may be a possibility of finding Ms. Maas.

The Sydenham Optimists Club is actively raising funds to provide playground equipment at the Hibou property.

The Children's Water Festival held at and near the Chesley Community Centre for Grade 4 students in the Bluewater Board of Education has been cancelled for 2020. Those Grade 4

students who missed the 2020 festival will be invited to the 2021 festival as Grade 5 stewards, as well as all existing 2021 Grade 4 students. The Festival organizing committee is seeking a Treasurer, as well as volunteers to serve on the organizing committee.

Walkerton quietly noted the 20th anniversary of the water tragedy with news updates. Drinking Water Source Protection Project Manager and GSCA Risk Management Official, Carl Seider, was interviewed by several news outlets, including the magazine 'Environmental Science and Engineering Magazine'.

12. Chair's Report

The Chair noted that the letters to Prime Minister Trudeau and MECP Minister Yurek respectively listed in "Correspondence" may be of interest to Directors' municipal Councils. The Chair will be asking to have these letters included in the Grey Highlands Council's agenda and encourages other Directors to do the same. The Chair has been advised of the delegation of concerned people who are advocating on behalf of conservation authorities to the provincial government through local MPP Bill Walker. She continues to keep in close contact with the Vice Chair, Scott Greig, and CAO, Tim Lanthier, to deal with immediate matters.

13. Other Business

None at this time.

14. Closed Session

Motion No.:
FA-20-054

Moved by: Marion Koepke
Seconded by: Paul McKenzie

THAT the Grey Sauble Conservation Authority Board of Directors proceed into closed session at 3:42 pm to discuss matters related to the following:

An Item related to the security of the property of the Authority – s.4(17)(xvii)(a) and litigation or potential litigation including matters before administrative tribunals - s.4(17)(xvii)(d).

AND FURTHER THAT CAO, Tim Lanthier, Administrative Assistant, Nancy Guest, and Manager of Information Services, Gloria Dangerfield, remain in attendance.

Carried

Motion No.:
FA-20-055

Moved by: Marion Koepke
Seconded by: Sue Carleton

THAT a closed meeting was held, and only closed session items identified were discussed in closed session.

AND THAT the Grey Sauble Conservation Authority Board of Directors approve the May 27, 2020 Confidential Closed Session minutes as presented in the closed session agenda.

Carried

13. Next Full Authority Meeting – Wednesday, July 22, 2020 at 1:15 p.m.

14. Adjournment

The meeting adjourned at 4:30 p.m.

Cathy Little, Chair

Nancy Guest
Recording Secretary



Grey Sauble Authority Board of Directors

MOTION

DATE: July 22nd, 2020

MOTION #: FA-20-057

MOVED BY: _____

SECONDED BY: _____

THAT the Grey Sauble Conservation Authority Board of Directors approve the Full Authority minutes of June 24th, 2020.

Permits Issued from June 1, 2020 to June 30, 2020

Permit #:	Date Applied:	Date Issued:	Lot:	Conc:	Municipality:	Former Municipality:
GS20-118	08-May-20	01-Jun-20	17	1	Town of the Blue Mountains	Collingwood Township
Approved works:			construction of multi-residential buildings		Project Location:	
					<input checked="" type="checkbox"/> construct	<input type="checkbox"/> alter watercourse <input type="checkbox"/> shoreline
					<input type="checkbox"/> alter structure	<input type="checkbox"/> alter wetland <input type="checkbox"/> fill
					Reviewed by:	
					Jacob Kloeze	
GS20-116	08-May-20	02-Jun-20	35	10	Town of the Blue Mountains	Collingwood Township
Approved works:			repair to existing shoreline protection works		Project Location:	235 Cameron Street
					<input type="checkbox"/> construct	<input type="checkbox"/> alter watercourse <input checked="" type="checkbox"/> shoreline
					<input type="checkbox"/> alter structure	<input type="checkbox"/> alter wetland <input type="checkbox"/> fill
					Reviewed by:	
					Jacob Kloeze	
GS20-117	08-May-20	02-Jun-20	35	10	Town of the Blue Mountains	Collingwood Township
Approved works:			repair to existing shoreline protection works		Project Location:	237 Cameron Street
					<input type="checkbox"/> construct	<input type="checkbox"/> alter watercourse <input checked="" type="checkbox"/> shoreline
					<input type="checkbox"/> alter structure	<input type="checkbox"/> alter wetland <input type="checkbox"/> fill
					Reviewed by:	
					Jacob Kloeze	
GS20-128	22-May-20	02-Jun-20	Part Lot	D	Town of South Bruce Peninsula	Amabel Township
Approved works:			Repair of existing retaining wall and associated site alterations		Project Location:	23 Lonely Island Drive
					<input type="checkbox"/> construct	<input type="checkbox"/> alter watercourse <input checked="" type="checkbox"/> shoreline
					<input type="checkbox"/> alter structure	<input type="checkbox"/> alter wetland <input type="checkbox"/> fill
					Reviewed by:	
					Lauren McGregor	
GS20-130	22-May-20	02-Jun-20	Part Lot	D	Town of South Bruce Peninsula	Amabel Township
Approved works:			Repair of an existing retaining wall and associated site alterations		Project Location:	75 Lonely Island Drive
					<input type="checkbox"/> construct	<input type="checkbox"/> alter watercourse <input checked="" type="checkbox"/> shoreline
					<input type="checkbox"/> alter structure	<input type="checkbox"/> alter wetland <input type="checkbox"/> fill
					Reviewed by:	
					Lauren McGregor	
GS20-131	22-May-20	02-Jun-20	Part Lot	D	Town of South Bruce Peninsula	Amabel Township
Approved works:			repair of an existing retaining wall and associated site alterations		Project Location:	79 Lonely Island Drive
					<input type="checkbox"/> construct	<input type="checkbox"/> alter watercourse <input checked="" type="checkbox"/> shoreline
					<input type="checkbox"/> alter structure	<input type="checkbox"/> alter wetland <input type="checkbox"/> fill
					Reviewed by:	
					Lauren McGregor	

Permit #:	Date Applied:	Date Issued:	Lot:	Conc:	Municipality:	Former Municipality:
GS20-099	27-Apr-20	02-Jun-20	Part Lot	11 EBR	Town of South Bruce Peninsula	Albemarle Township
Approved works:			shoreline protection works		Project Location: 172 Hope Bay Road <input type="checkbox"/> construct <input type="checkbox"/> alter watercourse <input checked="" type="checkbox"/> shoreline Reviewed by: <input type="checkbox"/> alter structure <input type="checkbox"/> alter wetland <input type="checkbox"/> fill Lauren McGregor	
GS20-146	29-May-20	02-Jun-20	Part Lot	11	Municipality of Grey Highlands	Artemesia Township
Approved works:			Installation of a pole dock and associated site alterations		Project Location: 124 Lakeshore Blvd <input checked="" type="checkbox"/> construct <input type="checkbox"/> alter watercourse <input type="checkbox"/> shoreline Reviewed by: <input type="checkbox"/> alter structure <input type="checkbox"/> alter wetland <input type="checkbox"/> fill Lauren McGregor	
GS20-107	05-May-20	03-Jun-20	34	9	Town of the Blue Mountains	Thornbury
Approved works:			repair to existing shoreline protection works		Project Location: 108 Lakeshore Drive <input type="checkbox"/> construct <input type="checkbox"/> alter watercourse <input checked="" type="checkbox"/> shoreline Reviewed by: <input type="checkbox"/> alter structure <input type="checkbox"/> alter wetland <input type="checkbox"/> fill Jacob Kloeze	
GS20-110	05-May-20	03-Jun-20	34	9	Town of the Blue Mountains	Collingwood Township
Approved works:			repair to existing shoreline protection works		Project Location: 116 Lakeshore Drive <input type="checkbox"/> construct <input type="checkbox"/> alter watercourse <input checked="" type="checkbox"/> shoreline Reviewed by: <input type="checkbox"/> alter structure <input type="checkbox"/> alter wetland <input type="checkbox"/> fill Jacob Kloeze	
GS20-034	26-Feb-20	03-Jun-20	Part Lor	1 NDR	Municipality of Grey Highlands	Artemesia Township
Approved works:			Replacement of existing shoreline protection works with arourstone and associated site alterations		Project Location: 133592 Wilcox Lake Road <input type="checkbox"/> construct <input checked="" type="checkbox"/> alter watercourse <input type="checkbox"/> shoreline Reviewed by: <input type="checkbox"/> alter structure <input type="checkbox"/> alter wetland <input type="checkbox"/> fill Lauren McGregor	
GS20-035	26-Feb-20	03-Jun-20	Part Lot	10	Municipality of Grey Highlands	Artemesia Township
Approved works:			Install armourstone along the shoreline and associated site alterations		Project Location: 190 WILES LANE <input type="checkbox"/> construct <input checked="" type="checkbox"/> alter watercourse <input type="checkbox"/> shoreline Reviewed by: <input type="checkbox"/> alter structure <input type="checkbox"/> alter wetland <input type="checkbox"/> fill Lauren McGregor	
GS20-119	11-May-20	03-Jun-20			Municipality of Meaford	Town of Meaford
Approved works:			repair to existing shoreline protection works and flagstone patio		Project Location: 156 Grant Avenue <input type="checkbox"/> construct <input type="checkbox"/> alter watercourse <input checked="" type="checkbox"/> shoreline Reviewed by: <input type="checkbox"/> alter structure <input type="checkbox"/> alter wetland <input type="checkbox"/> fill Jacob Kloeze	

Permit #:	Date Applied:	Date Issued:	Lot:	Conc:	Municipality:	Former Municipality:
GS20-126	20-May-20	03-Jun-20	14	2	Township of Georgian Bluffs	Derby Township
Approved works:		Construction of a deck		Project Location: 135 2nd Ave S.E. <input checked="" type="checkbox"/> construct <input type="checkbox"/> alter watercourse <input type="checkbox"/> shoreline Reviewed by: <input type="checkbox"/> alter structure <input type="checkbox"/> alter wetland <input type="checkbox"/> fill Mac Plewes		
GS20-052	09-Mar-20	04-Jun-20	14	2 SWTSR	Township of Chatsworth	Holland Township
Approved works:		Demolition of a cottage and construciton of a 97 sq m dwelling and 36 sq m garage with associated site alterations		Project Location: 164 Countryside Drive <input checked="" type="checkbox"/> construct <input type="checkbox"/> alter watercourse <input type="checkbox"/> shoreline Reviewed by: <input type="checkbox"/> alter structure <input type="checkbox"/> alter wetland <input checked="" type="checkbox"/> fill Mac Plewes		
GS20-151	02-Jun-20	04-Jun-20			City of Owen Sound	City of Owen Sound
Approved works:		Installation of a dock		Project Location: 287 5th Street E <input type="checkbox"/> construct <input type="checkbox"/> alter watercourse <input checked="" type="checkbox"/> shoreline Reviewed by: <input type="checkbox"/> alter structure <input type="checkbox"/> alter wetland <input type="checkbox"/> fill Mac Plewes		
GS20-159	27-May-20	08-Jun-20	Block A	Georgian Rang	Township of Georgian Bluffs	Keppel Township
Approved works:		Installation of a shore well		Project Location: 504583 Grey Road 1 <input type="checkbox"/> construct <input type="checkbox"/> alter watercourse <input checked="" type="checkbox"/> shoreline Reviewed by: <input type="checkbox"/> alter structure <input type="checkbox"/> alter wetland <input type="checkbox"/> fill Justine Lunt		
GS20-125	20-May-20	08-Jun-20	12	3	Township of Georgian Bluffs	Sarawak Township
Approved works:		Repair of shoreline protection works		Project Location: 318439 Grey Road 1 <input type="checkbox"/> construct <input type="checkbox"/> alter watercourse <input checked="" type="checkbox"/> shoreline Reviewed by: <input type="checkbox"/> alter structure <input type="checkbox"/> alter wetland <input type="checkbox"/> fill Mac Plewes		
GS20-142	27-May-20	08-Jun-20	22	Georgian Rang	Township of Georgian Bluffs	Keppel Township
Approved works:		Construction of a pool		Project Location: 505540 Grey Road 1 <input checked="" type="checkbox"/> construct <input type="checkbox"/> alter watercourse <input type="checkbox"/> shoreline Reviewed by: <input type="checkbox"/> alter structure <input type="checkbox"/> alter wetland <input type="checkbox"/> fill Mac Plewes		
GS20-140	27-May-20	10-Jun-20	26	7	Town of the Blue Mountains	Collingwood Township
Approved works:		construction of a residential dwelling and associated site grading		Project Location: <input checked="" type="checkbox"/> construct <input type="checkbox"/> alter watercourse <input type="checkbox"/> shoreline Reviewed by: <input type="checkbox"/> alter structure <input type="checkbox"/> alter wetland <input checked="" type="checkbox"/> fill Jacob Kloeze		

Permit #:	Date Applied:	Date Issued:	Lot:	Conc:	Municipality:	Former Municipality:
GS20-141	27-May-20	10-Jun-20	26	7	Town of the Blue Mountains	Collingwood Township
Approved works:			site grading associated with the construction of a residential dwelling		Project Location: <input type="checkbox"/> construct <input type="checkbox"/> alter watercourse <input type="checkbox"/> shoreline Reviewed by: <input type="checkbox"/> alter structure <input type="checkbox"/> alter wetland <input checked="" type="checkbox"/> fill Jacob Kloeze	
GS19-370	05-Nov-19	10-Jun-20	21	2	Town of the Blue Mountains	Collingwood Township
Approved works:			construction of shoreline protection works		Project Location: 103 Fraser Crescent <input type="checkbox"/> construct <input type="checkbox"/> alter watercourse <input checked="" type="checkbox"/> shoreline Reviewed by: <input type="checkbox"/> alter structure <input type="checkbox"/> alter wetland <input type="checkbox"/> fill Jacob Kloeze	
GS20-046	05-Mar-20	11-Jun-20	35	10	Town of the Blue Mountains	Collingwood Township
Approved works:			repair to existing shoreline protection works		Project Location: 221 Cameron Street <input type="checkbox"/> construct <input type="checkbox"/> alter watercourse <input checked="" type="checkbox"/> shoreline Reviewed by: <input type="checkbox"/> alter structure <input type="checkbox"/> alter wetland <input type="checkbox"/> fill Jacob Kloeze	
GS20-066	25-Mar-20	11-Jun-20	11	1	Municipality of Meaford	St Vincent Township
Approved works:			construction of a residential dwelling, septic system, and associated site alterations		Project Location: 171 Fraser Street <input checked="" type="checkbox"/> construct <input type="checkbox"/> alter watercourse <input type="checkbox"/> shoreline Reviewed by: <input type="checkbox"/> alter structure <input type="checkbox"/> alter wetland <input checked="" type="checkbox"/> fill Jacob Kloeze	
GS20-071	11-Mar-20	11-Jun-20	35	10	Town of the Blue Mountains	Collingwood Township
Approved works:			repair to existing shoreline protection works		Project Location: 223 Cameron Street <input type="checkbox"/> construct <input type="checkbox"/> alter watercourse <input checked="" type="checkbox"/> shoreline Reviewed by: <input type="checkbox"/> alter structure <input type="checkbox"/> alter wetland <input type="checkbox"/> fill Jacob Kloeze	
GS20-137	26-May-20	11-Jun-20	Part Lot	6	Municipality of Grey Highlands	Euphrasia Township
Approved works:			Construction of a laneway and installation of a culvert		Project Location: 130 Windy Lane Drive <input checked="" type="checkbox"/> construct <input checked="" type="checkbox"/> alter watercourse <input type="checkbox"/> shoreline Reviewed by: <input type="checkbox"/> alter structure <input type="checkbox"/> alter wetland <input type="checkbox"/> fill Lauren McGregor	
GS20-161	05-Jun-20	11-Jun-20	Part Lot	24	Town of South Bruce Peninsula	Amabel Township
Approved works:			Construction of a garden shed and associated site alterations		Project Location: 117 Rolling Hills Drive <input checked="" type="checkbox"/> construct <input type="checkbox"/> alter watercourse <input type="checkbox"/> shoreline Reviewed by: <input type="checkbox"/> alter structure <input type="checkbox"/> alter wetland <input checked="" type="checkbox"/> fill Lauren McGregor	

Permit #:	Date Applied:	Date Issued:	Lot:	Conc:	Municipality:	Former Municipality:
GS20-154	03-Jun-20	11-Jun-20	Pt Lt 29 a	8	Municipality of Grey Highlands	Artemesia Township
Approved works:			Construction of a saw mill and associated site alterations		Project Location: 214158 Sideroad 30 Flesherton, ON <input checked="" type="checkbox"/> construct <input type="checkbox"/> alter watercourse <input type="checkbox"/> shoreline Reviewed by: <input type="checkbox"/> alter structure <input type="checkbox"/> alter wetland <input checked="" type="checkbox"/> fill Lauren McGregor	
GS20-156	03-Jun-20	11-Jun-20			Municipality of Arran-Elderslie	Arran Township
Approved works:			Repairs to 2 existing concrete open footing culverts spanning Tara Creek		Project Location: Tara Creek; Intersection of SR 15/Concession 2 <input type="checkbox"/> construct <input checked="" type="checkbox"/> alter watercourse <input type="checkbox"/> shoreline Reviewed by: <input type="checkbox"/> alter structure <input type="checkbox"/> alter wetland <input type="checkbox"/> fill Lauren McGregor	
GS20-168	10-Jun-20	11-Jun-20			Town of the Blue Mountains	Collingwood Township
Approved works:			repairs to a revetment		Project Location: 209555 & 209557 Highway 26 <input type="checkbox"/> construct <input type="checkbox"/> alter watercourse <input checked="" type="checkbox"/> shoreline Reviewed by: <input type="checkbox"/> alter structure <input type="checkbox"/> alter wetland <input type="checkbox"/> fill Andrew Sorensen	
GS20-006	10-Jan-19	12-Jun-20			Town of the Blue Mountains	Collingwood Township
Approved works:			repair to existing shoreline protection works		Project Location: 106 Lakeshore Drive <input type="checkbox"/> construct <input type="checkbox"/> alter watercourse <input checked="" type="checkbox"/> shoreline Reviewed by: <input type="checkbox"/> alter structure <input type="checkbox"/> alter wetland <input type="checkbox"/> fill Jacob Kloeze	
GS20-138	14-May-20	15-Jun-20	18	Colpoy's Range	Township of Georgian Bluffs	Keppel Township
Approved works:			Construction of a dwelling, shorewell, and associated site alterations		Project Location: 125 Mallard Street <input checked="" type="checkbox"/> construct <input type="checkbox"/> alter watercourse <input type="checkbox"/> shoreline Reviewed by: <input type="checkbox"/> alter structure <input type="checkbox"/> alter wetland <input type="checkbox"/> fill Mac Plewes	
GS20-162	05-Jun-20	15-Jun-20	Part Lot	10	Municipality of Grey Highlands	Artemesia Township
Approved works:			installation of shoreline hardening works, stone steps to water, patio and associated site alterations		Project Location: 101 Island View Drive <input checked="" type="checkbox"/> construct <input type="checkbox"/> alter watercourse <input type="checkbox"/> shoreline Reviewed by: <input type="checkbox"/> alter structure <input type="checkbox"/> alter wetland <input checked="" type="checkbox"/> fill Lauren McGregor	
GS20-165	02-Jun-20	15-Jun-20			Township of Georgian Bluffs	Keppel Township
Approved works:			construction of a 780 square foot detached garage		Project Location: 504593 Grey Road One <input checked="" type="checkbox"/> construct <input type="checkbox"/> alter watercourse <input type="checkbox"/> shoreline Reviewed by: <input type="checkbox"/> alter structure <input type="checkbox"/> alter wetland <input type="checkbox"/> fill Justine Lunt	

Permit #:	Date Applied:	Date Issued:	Lot:	Conc:	Municipality:	Former Municipality:
GS20-153	03-Jun-20	16-Jun-20	Part Lot	D	Town of South Bruce Peninsula	Amabel Township
Approved works:		Construction of a residential dwelling, installation of a septic system, laneway and associated site alterations			Project Location: 74 Carson Lake Cres <input checked="" type="checkbox"/> construct <input type="checkbox"/> alter watercourse <input type="checkbox"/> shoreline <input type="checkbox"/> alter structure <input type="checkbox"/> alter wetland <input checked="" type="checkbox"/> fill	
					Reviewed by: Lauren McGregor	
GS20-011	20-Jan-20	16-Jun-20			Town of the Blue Mountains	Thornbury
Approved works:		place boulders to repair shoreline protection work			Project Location: Harbour Street <input type="checkbox"/> construct <input type="checkbox"/> alter watercourse <input checked="" type="checkbox"/> shoreline <input type="checkbox"/> alter structure <input type="checkbox"/> alter wetland <input type="checkbox"/> fill	
					Reviewed by: Andrew Sorensen	
GS20-067	26-Mar-20	16-Jun-20			Municipality of Meaford	Town of Meaford
Approved works:		repair to existing shoreline protection works			Project Location: 271 Sykes Street North <input type="checkbox"/> construct <input type="checkbox"/> alter watercourse <input checked="" type="checkbox"/> shoreline <input type="checkbox"/> alter structure <input type="checkbox"/> alter wetland <input type="checkbox"/> fill	
					Reviewed by: Jacob Kloeze	
GS20-124	16-May-20	18-Jun-20	40	12	Town of the Blue Mountains	Collingwood Township
Approved works:		in-ground swimming pool, patio, and associated landscaping			Project Location: 207 Sunset Boulevard <input checked="" type="checkbox"/> construct <input type="checkbox"/> alter watercourse <input type="checkbox"/> shoreline <input type="checkbox"/> alter structure <input type="checkbox"/> alter wetland <input checked="" type="checkbox"/> fill	
					Reviewed by: Andrew Sorensen	
GS20-158	04-Jun-20	19-Jun-20	23	4	Town of the Blue Mountains	Collingwood Township
Approved works:		installation of a 16 x 36 ft in-ground pool and associated landscaping			Project Location: 151 Alta Road <input checked="" type="checkbox"/> construct <input type="checkbox"/> alter watercourse <input type="checkbox"/> shoreline <input type="checkbox"/> alter structure <input type="checkbox"/> alter wetland <input checked="" type="checkbox"/> fill	
					Reviewed by: Jacob Kloeze	
GS20-152	03-Jun-20	19-Jun-20	35	BF	Municipality of Meaford	Sydenham Township
Approved works:		repair to existing shoreline protection works			Project Location: 359298 Grey Road 15 <input type="checkbox"/> construct <input type="checkbox"/> alter watercourse <input checked="" type="checkbox"/> shoreline <input type="checkbox"/> alter structure <input type="checkbox"/> alter wetland <input type="checkbox"/> fill	
					Reviewed by: Jacob Kloeze	
GS20-186	22-Jun-20	22-Jun-20			Town of the Blue Mountains	Collingwood Township
Approved works:		repair a shoreline revetment			Project Location: 209553 Highway 26 <input type="checkbox"/> construct <input type="checkbox"/> alter watercourse <input checked="" type="checkbox"/> shoreline <input type="checkbox"/> alter structure <input type="checkbox"/> alter wetland <input type="checkbox"/> fill	
					Reviewed by: Andrew Sorensen	

Permit #:	Date Applied:	Date Issued:	Lot:	Conc:	Municipality:	Former Municipality:
GS19-354	28-Oct-19	22-Jun-20	52	12	Town of Collingwood	Town of Collingwood
Approved works:			the construction of a shoreline revetment		Project Location: 207 Long Point Road <input type="checkbox"/> construct <input type="checkbox"/> alter watercourse <input checked="" type="checkbox"/> shoreline Reviewed by: <input type="checkbox"/> alter structure <input type="checkbox"/> alter wetland <input checked="" type="checkbox"/> fill Andrew Sorensen	
GS20-135	26-May-20	23-Jun-20	24	12	Town of the Blue Mountains	Collingwood Township
Approved works:			site alterations and placement of fill associated with the construction of a residential dwelling and septic system		Project Location: 787362 Grey Road 13 <input type="checkbox"/> construct <input type="checkbox"/> alter watercourse <input type="checkbox"/> shoreline Reviewed by: <input type="checkbox"/> alter structure <input type="checkbox"/> alter wetland <input checked="" type="checkbox"/> fill Jacob Kloeze	
GS20-175	17-Jun-20	23-Jun-20	37	11	Town of the Blue Mountains	Collingwood Township
Approved works:			landscape works related to shoreline protection		Project Location: 165 Lake Drive <input type="checkbox"/> construct <input type="checkbox"/> alter watercourse <input checked="" type="checkbox"/> shoreline Reviewed by: <input type="checkbox"/> alter structure <input type="checkbox"/> alter wetland <input type="checkbox"/> fill Andrew Sorensen	
GS20-180	19-Jun-20	23-Jun-20			Municipality of Grey Highlands	Euphrasia Township
Approved works:			replacement of two existing culverts		Project Location: Euphrasia/St. Vincent Townline, asset 631 and 632 <input type="checkbox"/> construct <input checked="" type="checkbox"/> alter watercourse <input type="checkbox"/> shoreline Reviewed by: <input type="checkbox"/> alter structure <input type="checkbox"/> alter wetland <input type="checkbox"/> fill Lauren McGregor	
GS20-181	19-Jun-20	23-Jun-20			Municipality of Grey Highlands	Euphrasia Township
Approved works:			Installation of a culvert liner		Project Location: Euphrasia/St. Vincent Townline (Culvert Asset 630) <input type="checkbox"/> construct <input checked="" type="checkbox"/> alter watercourse <input type="checkbox"/> shoreline Reviewed by: <input type="checkbox"/> alter structure <input type="checkbox"/> alter wetland <input type="checkbox"/> fill Lauren McGregor	
GS20-166	09-Jun-20	23-Jun-20	34	11	Town of Collingwood	Town of Collingwood
Approved works:			maintenance of stream structure, replacement of culvert, pond inlet and outlet improvements and associated erosion control measures		Project Location: 067547 33 Side Road <input type="checkbox"/> construct <input checked="" type="checkbox"/> alter watercourse <input type="checkbox"/> shoreline Reviewed by: <input type="checkbox"/> alter structure <input type="checkbox"/> alter wetland <input type="checkbox"/> fill Andrew Sorensen	
GS20-188	11-Jun-20	24-Jun-20	31	8	Town of the Blue Mountains	Thornbury
Approved works:			construction of a 432 ft ² detached garage		Project Location: 132 Bayview Avenue <input checked="" type="checkbox"/> construct <input type="checkbox"/> alter watercourse <input type="checkbox"/> shoreline Reviewed by: <input type="checkbox"/> alter structure <input type="checkbox"/> alter wetland <input type="checkbox"/> fill Jacob Kloeze	

Permit #:	Date Applied:	Date Issued:	Lot:	Conc:	Municipality:	Former Municipality:
GS20-192	23-Jun-20	25-Jun-20	28	6	Municipality of Meaford	St Vincent Township
Approved works:			repair to existing shoreline protection works		Project Location: 323 Cedar Ave	
					<input type="checkbox"/> construct <input type="checkbox"/> alter watercourse <input checked="" type="checkbox"/> shoreline Reviewed by:	
					<input type="checkbox"/> alter structure <input type="checkbox"/> alter wetland <input type="checkbox"/> fill Jacob Kloeze	
GS20-193	23-Jun-20	25-Jun-20	Part Lot	9	Municipality of Grey Highlands	Artemesia Township
Approved works:			Construction of a deck and associated site alterations		Project Location: 150 Canrobert St	
					<input checked="" type="checkbox"/> construct <input type="checkbox"/> alter watercourse <input type="checkbox"/> shoreline Reviewed by:	
					<input type="checkbox"/> alter structure <input type="checkbox"/> alter wetland <input type="checkbox"/> fill Lauren McGregor	
GS20-182	12-Jun-20	25-Jun-20			Township of Georgian Bluffs	Keppel Township
Approved works:			replacement of a septic system and associated site alterations		Project Location: 504435 Grey Road 1	
					<input type="checkbox"/> construct <input type="checkbox"/> alter watercourse <input type="checkbox"/> shoreline Reviewed by:	
					<input type="checkbox"/> alter structure <input type="checkbox"/> alter wetland <input checked="" type="checkbox"/> fill Justine Lunt	
GS19-108	18-Apr-19	25-Jun-20	Part Lot	10	Municipality of Grey Highlands	Artemesia Township
Approved works:			removal of an existing dock and installation of a new dock		Project Location: 188 WILES LANE	
					<input checked="" type="checkbox"/> construct <input type="checkbox"/> alter watercourse <input type="checkbox"/> shoreline Reviewed by:	
					<input type="checkbox"/> alter structure <input type="checkbox"/> alter wetland <input type="checkbox"/> fill Lauren McGregor	
GS20-109	05-May-20	29-Jun-20	2	8	Municipality of Meaford	St Vincent Township
Approved works:			site alterations and placement of fill associated with driveway realignment and septic system		Project Location: 137111 Grey Road 12	
					<input type="checkbox"/> construct <input type="checkbox"/> alter watercourse <input type="checkbox"/> shoreline Reviewed by:	
					<input type="checkbox"/> alter structure <input type="checkbox"/> alter wetland <input checked="" type="checkbox"/> fill Jacob Kloeze	
GS20-105	01-May-20	30-Jun-20	11	1	Municipality of Meaford	St Vincent Township
Approved works:			repair to existing shoreline protection works		Project Location: 191 Fraser Street	
					<input type="checkbox"/> construct <input type="checkbox"/> alter watercourse <input checked="" type="checkbox"/> shoreline Reviewed by:	
					<input type="checkbox"/> alter structure <input type="checkbox"/> alter wetland <input type="checkbox"/> fill Jacob Kloeze	
GS20-106	01-May-20	30-Jun-20	11	1	Municipality of Meaford	St Vincent Township
Approved works:			repair to existing shoreline protection works		Project Location: 195 Fraser Street	
					<input type="checkbox"/> construct <input type="checkbox"/> alter watercourse <input checked="" type="checkbox"/> shoreline Reviewed by:	
					<input type="checkbox"/> alter structure <input type="checkbox"/> alter wetland <input type="checkbox"/> fill Jacob Kloeze	

Permit #:	Date Applied:	Date Issued:	Lot:	Conc:	Municipality:	Former Municipality:
GS20-028	14-Feb-20	30-Jun-20	17	BF	Municipality of Meaford	Sydenham Township
Approved works:			construction of a 3148 ft ² dwelling and associated site alterations		Project Location: <input checked="" type="checkbox"/> construct <input type="checkbox"/> alter watercourse <input type="checkbox"/> shoreline Reviewed by: <input type="checkbox"/> alter structure <input type="checkbox"/> alter wetland <input checked="" type="checkbox"/> fill Andrew Sorensen	
GS20-144	27-May-20	30-Jun-20	Part Lot	6 WBR	Town of South Bruce Peninsula	Albemarle Township
Approved works:			Construction of two additions on to an existing residential dwelling		Project Location: 1220 Sunset Drive <input checked="" type="checkbox"/> construct <input type="checkbox"/> alter watercourse <input type="checkbox"/> shoreline Reviewed by: <input type="checkbox"/> alter structure <input type="checkbox"/> alter wetland <input type="checkbox"/> fill Lauren McGregor	
GS20-196	25-Jun-20	30-Jun-20	Twn Plt		Town of South Bruce Peninsula	Amabel Township
Approved works:			installation of shoreline armouring and associated site alteration		Project Location: 623 Centennial Cr <input type="checkbox"/> construct <input type="checkbox"/> alter watercourse <input checked="" type="checkbox"/> shoreline Reviewed by: <input type="checkbox"/> alter structure <input type="checkbox"/> alter wetland <input type="checkbox"/> fill Andrew Sorensen	
GS20-199	25-Jun-20	30-Jun-20	Part Lot	11	Municipality of Grey Highlands	Artemesia Township
Approved works:			installation of a retaining wall, removable at grade deck, a fire pit, a graded shoreline access with pea gravel fill and a removable pole dock		Project Location: 13 Grey Road 4 <input checked="" type="checkbox"/> construct <input checked="" type="checkbox"/> alter watercourse <input type="checkbox"/> shoreline Reviewed by: <input type="checkbox"/> alter structure <input type="checkbox"/> alter wetland <input type="checkbox"/> fill Lauren McGregor	
GS20-170	12-Jun-20	30-Jun-20	25	7	Municipality of Meaford	Sydenham Township
Approved works:			construction of a 2322 ft ² accessory structure		Project Location: 499008 6th Concession North <input checked="" type="checkbox"/> construct <input type="checkbox"/> alter watercourse <input type="checkbox"/> shoreline Reviewed by: <input type="checkbox"/> alter structure <input type="checkbox"/> alter wetland <input checked="" type="checkbox"/> fill Jacob Kloeze	

GREY SAUBLE CONSERVATION AUTHORITY
RECEIPTS
June 1st - 30th, 2020

FROM

Regulation Permits	\$	18,280.00	
Planning	\$	12,350.00	
Land Leases	\$	553.70	
Property Use/Rentals	-\$	100.00	Cancellation Due to Covid
Self-Serve Parking Fees	\$	10,916.00	1,286 Day and 80 Season Passes
Day Camp	\$	2,667.18	Program Cancellations to be Refunded in July
Forests Ontario	\$	6,247.76	50 Million Tree Program
2nd Levy Installment	\$	39,972.74	Arran-Elderslie, Grey Highlands
ECCC	\$	27,111.00	Stewardship Funds
Province of Ontario	\$	96,075.00	2020-2021 DWSP 1st Installment
Funds Owed to Foundation	\$	75.00	Memorial Forest Tree Purchase
Donations	\$	1,500.00	Georgian Bay Garden Club
Oliphant Phragmites Donations	\$	8,000.00	
Miscellaneous	\$	303.03	
June Receipts	\$	223,951.41	

GREY SAUBLE CONSERVATION AUTHORITY
EXPENSES
June 1st - 30th, 2020

11138	Middlebro' & Stevens LLP	\$	8,942.46	Legal Fees
11139	Bruce Telecom	\$	826.98	Telephone & Equipment Charges for May
11140	Damar Security Systems	\$	33.90	Remote Programming Fee
11141	Municipality of Arran-Elderslie	\$	286.00	Property Tax - 2nd Installment
11142	Bell Canada	\$	244.69	Office and Tara Stream Gauge Monthly Services for May
11143	Sunbelt Rentals of Canada Inc.	\$	2,883.76	Grey County Trail Padlocks
11144	eSolutions Group Limited	\$	3,390.00	Branding Professional Services
11145	Township of Georgian Bluffs	\$	234.36	Indian Falls Water Charges
11146	Georgian Tree Service	\$	791.00	Tree Removal
11147	Municipality of Grey Highlands	\$	1,696.00	Property Tax - 2nd Installment
11148	DPOC	\$	1,010.49	Postage Machine Lease and Postage Add-On
11149	Rogers Wireless	\$	129.18	Cell Phone Usage
11150	Timm Enterprises Limited	\$	3,209.23	Cocodiscs
11151	Xerox Canada Ltd.	\$	28.56	GSCA Print and Copy Charges
11152	O.M.E.R.S.	\$	21,418.24	OMERS Contributions - April 2020
11153	Cornelius Van Zyl	\$	3,748.60	Great Lakes Guardian Community Fund Project Re-imbursement
11154	Brianna Helder	\$	840.00	Summer Camp Cancellation Refund
11155	Denise Given	\$	987.66	Summer Camp Cancellation Refund
11156	Pam Jarman	\$	181.80	Summer Camp Cancellation Refund
11157	Jenna Ellis	\$	1,415.80	Summer Camp Cancellation Refund
11158	MacDonnell Fuels Limited	\$	2,436.03	GSCA Vehicle Fuel
11159	Bruce Telecom	\$	551.53	Telephone & Equipment Charges for June
11160	Excel Business Systems	\$	65.85	DWSP Copy and Print Charges
11161	Sloan Nursery and Christmas Trees	\$	524.32	Landscape Tree Order
11162	Damar Security Systems	\$	33.90	Remote Programming Fee
11163	Bell Canada	\$	332.58	Office and Tara Stream Gauge Monthly Service for June
11164	The Cleaning Brigade	\$	361.60	Monthly Office Cleaning Services
11165	City of Owen Sound	\$	311.85	Admin Centre Water Charges
11166	Coates & Best Inc.	\$	53.62	Office Supplies
11167	Conservation Ontario	\$	12,938.00	2nd Levy Installment and DWSP ESRI Maintenance
11168	Earth Power Tractors And Equipment Inc.	\$	99.89	Forestry Equipment Repair
11169	Kilsyth Auto Service Ltd.	\$	2,959.98	Vehicle Repair and Maintenance
11170	Municipality of Meaford	\$	88.12	Hibou Water Charges
11171	Middlebro' & Stevens LLP	\$	927.28	Legal Fees
11172	Miller Waste Systems Inc.	\$	147.52	Garbage Service
11173	Pineneedle Farms	\$	4,932.06	2020 Tree Order
11174	Somerville Nurseries Inc.	\$	48,175.91	2020 Tree Order

Mastercard Payments	\$ 1,974.48	
Moneris, Copier	\$ 202.52	includes DWSP copier
Self-Serve Moneris Fees	\$ 360.21	
Amilia Fees	\$ 434.41	
Hydro, Reliance	\$ 1,926.75	
Receiver General, EHT, WSIB	\$ 41,533.17	
DWSP Website Maintenance	\$ 500.00	paid via payroll transfer
Employee Expense Claims	\$ 40.50	paid via payroll transfer
June Payroll	\$ 101,662.06	
June Expenses	<u>\$ 275,872.84</u>	



May 28, 2020

The Honourable Bill Morneau
Minister of Finance

The Honourable Catherine McKenna
Minister of Infrastructure and Communities

The Honourable Jonathan Wilkinson
Minister of Environment and Climate Change

Via E-mail

Conservation Authorities – Implementation Agents for Stimulating a More Resilient, Sustainable and Green Canadian Economy

Conservation Ontario represents the network of Ontario's 36 conservation authorities. We are writing to express our interest in working with your government to advance our shared objectives and to request your support for some program design considerations for any potential economic stimulus package arising from COVID-19.

As the Federal government assesses the ever-changing Canadian landscape due to the COVID-19 pandemic, it is abundantly clear that our way of life has been indefinitely disrupted. After spending the last two months predominantly indoors, Canadians are experiencing an unfamiliar disconnection from the natural world. With long-awaited warm weather arriving in Ontario, millions of Canadians are inspired to reconnect with natural areas, greenways, and trails as a reprieve to their mental and physical health.

The pandemic has additionally emphasized the need for access to the environment, through cleaner air, clearer water, and greener spaces. As restrictions begin to ease, Canadians are eager to recreate and improve the quality of open spaces and to invest in important projects. Governments and sectors of the economy that have been negatively impacted are looking to the government to stimulate the move towards a more resilient, sustainable green economy.

Ontario's Conservation Authorities, which cover a watershed jurisdiction that includes approximately 40% of the national population are uniquely qualified implementation agents, proficient and experienced in assisting all levels of government in delivering shovel worthy projects and programs. Any

120 Bayview Parkway Newmarket Ontario L3Y 3W3
Tel: (905) 895-0716 Fax: (905) 895-0751 Email: info@conservationontario.ca

economic stimulus program arising from this pandemic provides a rare opportunity for the Federal government to further our collective mission to protect, conserve and restore natural resources and develop resilient communities through education, the application of science, community engagement, service excellence and collaboration with our partners.

Conservation authorities are collaborating in many initiatives across the province including the Healthy Lake Huron and Lake Erie Action Plans to restore priority watersheds that drain into Lakes Erie and Huron using rural storm water management systems, wetland restoration, tree planting and promotion of soil health practices. Conservation authorities are also critical partners in the Greenbelt Foundation's Positively Green Initiative, a collaboration with 13 conservation authorities located in and around Ontario's greenbelt area. The projects identified in their proposal are valued at \$85 million and provide further evidence that the environmental sector is good for job creation, and, building better climate and community economic resilience.

Conservation Ontario represents the collective interests of all conservation authorities across the province and we are aware that conservation authorities are having discussions with senior staff in your Ministries about project priorities in their individual jurisdictions. We would like to take this opportunity to highlight potential funding opportunities for vital projects within our collective jurisdiction, which would facilitate flood and erosion risk reduction, nature-based climate solutions, expansion of green infrastructure, climate change adaptation and Great Lakes health.

Prior to delving into the details of these initiatives, we wanted to recognize how investing in conservation authorities allows the government to realize their re-employment objectives and promote prudent spending while operating during these difficult economic times. The following financial realities are widely supported by scientific studies:

- Investments in trails and green spaces lowers the need for more expensive investments in hospitals and health care.
- Investments in the existing critical flood and erosion control infrastructure managed by conservation authorities protects life and property and avoids significant costs associated with flooding in Ontario
- Investments in 'living shorelines' is more sustainable and resilient than investing in sheet steel/hard shorelines, reduces long-term operational costs, and provides multiple secondary benefits.
- Investments in green infrastructure creates jobs and is both effective and cost effective in the short and long-term.

It is therefore with good reason that Conservation Authorities see funding opportunities as a win-win situation, as your investment to facilitate Canada's economic recovery from pandemic conditions will also further develop resilient and prosperous watersheds throughout the Province.

To achieve this shared vision for a more resilient, sustainable and green economy, we feel there is an important opportunity for various ministries within your government to work directly with conservation authorities to undertake projects that will, in turn, stimulate other local business and sectors. For example:

- **Building Resiliency:**

Public and private infrastructure is particularly vulnerable to impacts from climate change as municipalities in Canada struggle with the cost of maintaining these crucial assets. Research is showing that investments in adaptation and risk mitigation measures can help ensure Canadian communities are resilient to threats caused by a changing climate, including risks to our public infrastructure. Some studies have shown a return on investment around 6:1, meaning that for every dollar invested in mitigation measures, \$6 is saved in future damages.

Conservation authority water and erosion control infrastructure annually already helps to avoid at least \$150 M in damages to properties. We deliver this program in partnership with the Province of Ontario for a total project investment of \$10 million (Provincial contribution is \$5 million). In response to increasing risk associated with climate change (e.g. high water levels and flooding/erosion), the 2020/2021 funding envelope for the program is oversubscribed by almost two-fold with an estimated total project cost of more than \$19 million for 102 project submissions from 30 conservation authorities across the Province.

In addition, over the past 13 years, conservation authorities have identified, on average, 128 studies and repair projects each year and this demand is expected to continue. These shovel worthy/shovel ready studies and repair projects are an investment in jobs and economic activity (e.g. consultants, contractors, materials) and are vital in protecting the people of Ontario from flood and erosion risk.

Federal investment in water and erosion control and green infrastructure programs would mean that more studies and projects could be completed by providing a greater proportion of total project costs to relieve the burden on municipal budgets. This would accelerate work to make critical infrastructure safe and resilient to the increasing impacts of climate change while stimulating the economy. On Toronto's waterfront for example, investments in protecting infrastructure such as water treatment plants, Billy Bishop Airport and connecting road and transmission networks from erosion will limit risks of failure, lengthen replacement cycles, so as to protect these essential assets for the long-term.

- **Greenspaces and Nature based activities for health and wellbeing:**

Over these last several months, we have learned just how important getting outside and visiting greenspaces and greenways are to the general public while experiencing pandemic conditions. Conservation Authorities collectively own and manage just over 500 conservation areas and over 3,500 km of trails that were visited by over 8 million people in 2018.

These natural areas offer a wide variety of nature-based activities that provide important mental and physical benefits to users. Visitors to these areas also provide spillover benefits to nearby communities visiting shops, cultural venues and restaurants. Conservation Areas and Greenways have positive impacts on property values and are a deciding factor for many individuals and industries choosing a new location. The Ontario Trails Council identified that in 2016, for example, trails represented over \$2 billion to the Ontario economy. In addition, being active, especially in outdoor spaces, has significant impact to the health of our communities, and in particular children's health. Health Canada estimates that only 12% of youth get adequate exercise.

In addition to these benefits, Federal investments in trails, greenways and conservation areas (e.g. land acquisition, infrastructure improvements such as improved and widened trails and bridges, active/green transportation links to similar sites or communities, touchless gates and pay systems as well as visitor monitoring systems and consistent signage) would enable safer visits in pandemic conditions and educate the public on how looking after the health of our environment will help to prevent future pandemics from occurring.

- **Healthy Great Lakes:**

Investments in conservation authority Rural Clean Water programs help to maintain soil health for agriculture and reduce nutrient loadings to the Great Lakes as documented in the Great Lakes Water Quality Agreement, and through existing Federal support of collaborative efforts to implement the Lake Erie Action Plan, and Healthy Lake Huron.

In 2018 conservation authorities engaged 737 landowners resulting in 683 projects (82% Agricultural). Over \$3 M grant dollars were provided to landowners to implement projects including windbreaks, soil erosion control measures, manure storage, stream buffers. The total value of these projects was estimated to be in the order of \$7.5 M to the rural and agriculture economy which went to design, materials, contractors and farmers to implement the projects. There is a greater demand for projects than funding available.

In order to actually improve the health and resiliency of the watersheds, new investments are needed to increase the scale, scope and intensity of our efforts. In economic stimulus studies undertaken in the United States it was estimated that every dollar invested in the Great Lakes Restoration Initiative is projected to generate more than three dollars in additional economic activity.

- **Habitat Enhancement, Rehabilitation and Restoration:**

Conservation authorities could increase delivery of habitat restoration and rehabilitation projects that provide multiple benefits to healthy Great Lakes, natural infrastructure, maintaining biodiversity, protecting water supplies, sequestering carbon, building climate resilience and air quality as well as flood resilience. In 2018 conservation authorities engaged close to 800 landowners resulting in almost 1500 projects:

- 201 wetland projects
- 911 habitat projects
- 259 shoreline riparian projects o 65 stream/fish habitat projects
- 178 projects aimed at invasive species management
- 135 projects were aimed to protect and restore species at risk habitat
- 673 hectares and 46 km of stream restored or rehabilitated

Total value of these projects was close to \$18 M supporting project planning/consultants, supplies, contractors, materials and labour to implement the projects.

These programs are delivered in partnership with agencies like Forests Ontario, which has documented the economic impact of tree planting and restoration programs in local economies. This study reported that the GDP impact on the Canadian economy of tree planting activities in Southern Ontario is estimated to be \$12.7 million annually. This equates to a 3:1 return on investment for the government's annual investment in the 50 Million Tree Program of which CAs are

key partners (planting over 50 percent of the trees funded under this program) which is more than any other agency under this program.

Stimulus investments would enable conservation authorities to meet the greater demand for projects. In 2018 they planted close to 2 Million trees on over 1100 hectares of land in southern Ontario. Over 2,000 landowners were engaged, resulting in 1,173 projects. Close to \$4.5 M grant dollars were provided to projects generating a total value of over \$5 M to the urban, rural and agricultural (44%) economy which went to planning, nurseries, tree planters, machinery and supplies.

Stimulus investments need to include delivery of habitat restoration and rehabilitation projects that will restore the health of forests, wetlands and rivers.

Key Short-term Program Design Considerations

We believe that immediate and short term stimulus funding is needed to support resilient, sustainable, healthy, and prosperous communities and watersheds through investment in the types of projects described above. This investment can be administered through modifications to existing programs like the Disaster Mitigation and Adaptation Fund (DMAF), the Investing in Canada Infrastructure Program (ICIP) and Great Lakes Protection Initiative (GLPI), to swiftly generate job growth and new economic activity across the province. This would respond to the needs of small, rural and northern communities and farmers, in addition to the demands being placed on larger urban communities due to this Pandemic.

Some key short-term program design considerations include:

- **Increase investment in currently eligible projects described above and make these projects specifically eligible.**
- **Continue to allow Conservation Authorities the flexibility to apply directly for these funding programs and to include our municipal and agency partners as part of future intake processes.**
- **Modify the funding distribution to 75-100% federal contributions and modify program design to benefit all communities with smaller projects.** Our municipal partners have communicated consistently that finding matching funds for infrastructure and other projects will be challenging at this time because of the budget impacts of COVID 19 pandemic response. This issue is further exacerbated by the high dollar value expected for eligible projects (e.g. DMAF program). .
- **Include Environmental Assessment and project planning design elements in addition to construction as eligible** for stimulus funding. A project that is well-planned and designed takes time and money and is an investment into shovel worthy project construction.
- **Include as eligible, monitoring of environmental improvements, water quality, quantity, air quality, forest cover, biodiversity and areas of wetlands and other natural systems improved through restoration to track program effectiveness and long term climate trends, in addition to evaluating and reporting the resulting job creation and benefits of economic stimulus to local economies.**

Moving Forward

Summary of immediate Conservation Authority opportunities:

- Modifications to current federal programs will create projects that support jobs and stimulate local economies and provides an opportunity for quick implementation.
- Additional investments will stimulate flood and erosion control infrastructure projects in 2020/21. Such investment will mean the difference in whether or not many 2020/21 shovel ready/worthy flood and erosion control infrastructure studies and repair projects will occur.
- Federal investments in conservation authority trails, greenways and conservation areas will enable safer visits in pandemic conditions and educate the public about the importance of maintaining a healthy environment.
- Conservation authorities have many shovel ready/worthy and near ready, habitat enhancement, restoration and rehabilitation projects, often with many local partners.
- A greater investment in clean water projects will accelerate improvements to water quality of the Great Lakes and in our watersheds.
- With additional investments, conservation authorities can increase tree planting and habitat enhancement, rehabilitation and restoration across the province.

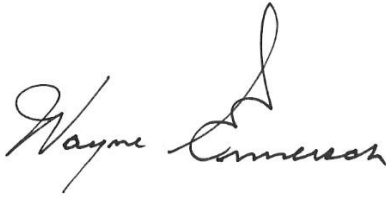
Conservation authorities have already started to develop and implement new standards and practices to ensure safety of staff and the public as they deliver current essential services under pandemic conditions, and plan for a broader delivery of programs and services as we recover towards what we believe will be a new resilient economy that continues to position Ontario, and Canada, competitively in the future.

While there is no specific blueprint for the Federal government to restart the Canadian economy under pandemic conditions such as we are experiencing, it makes sense to invest in projects and programs with experienced and tested partners who can provide additional co-benefits to other struggling local businesses and sectors. Ontario's conservation authorities offer a number of ready areas to develop or expand which will not just help people to get back to work and business to re-open, but will also be part of the growing foundation for the establishment of a greener economy which will take us into the future and better position us to develop more resilient, greener, healthy, and prosperous communities.

We thank you for your support with previous and current successful programs, such as the GLPI, DMAF, ICIP, and National Disaster Mitigation Program (NDMP). In developing an updated green economic stimulus program, we ask for your support to increase investments and to build upon the current or new programs following the above design considerations. This will ensure streamlined release of short-term stimulus funding.

On behalf of Conservation Ontario we would be pleased to meet with you and your staff to discuss our interest in the above and how we could work with you to support our mutual objectives.

Sincerely,

A handwritten signature in black ink, reading "Wayne Comerich". The signature is fluid and cursive, with the first name "Wayne" written in a larger, more prominent script than the last name "Comerich".

Chair of Conservation Ontario

Cc: The Honourable Bill Blair, Minister Public Safety and Emergency Preparedness
The Honourable Seamus O'Regan, Minister Natural Resources
The Honourable Marie-Claude-Bibeau, Minister Agriculture and Agri-Food



MOTION

Grey Sauble Authority Board of Directors

MOTION

DATE: July 22nd, 2020

MOTION #: FA-20-058

MOVED BY: _____

SECONDED BY: _____

Recommended Consent Agenda Motion

THAT in consideration of the Consent Agenda Items listed on the June 24th, 2020, agenda, the Grey Sauble Conservation Authority Board of Directors receives the following items: i) Environmental Planning - Section 28 Permits – June 2020; ii) Administration - Receipts & Expenses – June 2020; iii) Correspondence: a) Letter from Wayne Emerson, Chair, Conservation Ontario to Federal Ministers regarding Federal Stimulus Opportunities – May 28, 2020;

GREY SAUBLE CONSERVATION AUTHORITY 2020 APPROVED BUDGET

	Approved Budget 2019	Approved Budget 2020	Actual Q2 2019	Actual Q2 2020	Forecast
WATER MANAGEMENT					
Flood Forecasting & Warning					
Total Flood Forecasting & Warning	124,408	110,229	51,747	49,061	106,541
Flood Control Structures					
Total Flood Control Structures	7,530	7,287	2,148	3,568	8,800
Ice Management Planning & Funding					
Total Ice Management Planning & Funding	4,000	-		-	-
Erosion Control Structures					
Total Erosion Control Structures	2,000	2,100	58	448	1,100
Other Dams					
Total Other Dams	12,544	23,043	2,175	6,407	19,100
TOTAL WATER MANAGEMENT	150,482	142,660	56,128	59,484	135,541
Watershed Monitoring & Management					
Total Watershed Monitoring & Management	191,139	50,905	50,468	10,483	41,854
Stewardship					
Total Stewardship		104,755	-	20,822	111,205
Environmental Planning & Regulations					
Total Environmental Planning & Regulations	380,288	412,089	158,949	181,476	402,272
FORESTRY & SPECIES					
GSCA Forestry & Species					
Total GSCA Forestry & Species	168,297	151,970	52,033	51,143	147,330
Grey Sauble Forestry Service					
Total Grey Sauble Forestry Service	233,330	220,587	192,812	141,701	172,972
TOTAL FORESTRY & SPECIES	401,627	372,557	244,845	192,845	320,302

	Approved Budget 2019	Approved Budget 2020	Actual Q2 2019	Actual Q2 2020	Forecast
WATER MANAGEMENT					
Flood Forecasting & Warning					
Total Flood Forecasting & Warning	124,408	110,229	34,883	40,369	110,230
Flood Control Structures					
Total Flood Control Structures	7,530	7,287	1,007	2,734	7,287
Ice Management Planning & Funding					
Total Ice Management Planning & Funding	4,000	-	500	-	-
Erosion Control Structures					
Total Erosion Control Structures	2,000	2,100	500	550	2,100
Other Dams					
Total Other Dams	12,544	23,043	6,272	11,522	23,043
TOTAL WATER MANAGEMENT	150,482	142,660	43,162	55,174	142,660
Watershed Monitoring & Management					
Total Watershed Monitoring & Management	191,139	50,905	135,048	23,602	43,905
Stewardship					
Total Stewardship		104,755		108,333	111,755
Environmental Planning & Regulations					
Total Environmental Planning & Regulations	380,288	412,089	212,934	183,013	402,272
FORESTRY & SPECIES					
GSCA Forestry & Species					
Total GSCA Forestry & Species	168,297	136,215	41,963	28,394	137,909
Grey Sauble Forestry Service					
Total Grey Sauble Forestry Service	233,330	236,342	93,759	124,470	182,393
TOTAL FORESTRY & SPECIES	401,627	372,557	135,722	152,865	320,302

	Approved Budget 2019	Approved Budget 2020	Actual Q2 2019	Actual Q2 2020	Forecast
CONSERVATION LANDS					
Conservation Lands Policy & Strategy					
Total Conservation Lands Policy & Strategy	173,922	189,982	107,456	53,846	157,069
Grey County Management Contract					
Total Grey County Management Contract	149,542	151,016	52,106	54,692	151,016
Conservation Lands Operations					
Total Conservation Lands Operations	254,914	248,851	91,859	60,842	210,415
TOTAL CONSERVATION LANDS	578,378	589,849	251,421	169,381	518,500
Conservation Information & Community Outreach					
Total Conservation Information & Community Outreach	140,156	98,471	46,219	37,286	94,883
Education					
Total Education		55,943		10,791	20,452
				48,078	
Administration, Finance & Human Resources					
Total Administration, Finance & Human Resources	532,793	550,680	271,919	258,948	507,109
GIS, Information Management & Information Technology					
Total GIS & Information Management	355,765	238,824	205,114	94,834	239,809
				3,557	
Source Water Protection					
Total Source Water Protection	158,738	186,811	56,123	95,077	185,849
Source Water Risk Management Service					
Total Source Water Risk Management Service	76,679	76,679	55,491	18,655	53,988
Fleet & Equipment Management					
Total Fleet & Equipment Management	85,425	94,025	25,389	19,761	86,453
Total Operating Budget	3,051,469	2,974,247	1,422,066	1,169,842	2,718,217

	Approved Budget 2019	Approved Budget 2020	Actual Q2 2019	Actual Q2 2020	Forecast
CONSERVATION LANDS					
Conservation Lands Policy & Strategy					
Total Conservation Lands Policy & Strategy	173,922	189,982	111,755	120,825	187,316
Grey County Management Contract					
Total Grey County Management Contract	149,542	151,016	56,249	67,558	151,016
Conservation Lands Operations					
Total Conservation Lands Operations	254,914	248,851	112,307	106,602	222,301
TOTAL CONSERVATION LANDS	578,378	589,849	280,311	294,985	560,633
Conservation Information & Community Outreach					
Total Conservation Information & Community Outreach	140,156	98,471	78,889	49,235	99,971
Education					
Total Education		55,943		3,907	7,323
Administration, Finance & Human Resources					
Total Administration, Finance & Human Resources	532,793	550,680	265,675	272,454	543,936
GIS, Information Management & Information Technology					
Total GIS & Information Management	355,765	238,824	151,845	92,662	235,324
Source Water Protection					
Total Source Water Protection	158,738	186,811	43,004	176,155	193,920
Source Water Risk Management Service					
Total Source Water Risk Management Service	76,679	76,679	78,179	64,500	64,500
Fleet & Equipment Management					
Total Fleet & Equipment Management	85,425	94,025	33,530	23,762	80,725
Total Operating Budget	3,051,470	2,974,247	1,458,299	1,500,647	2,807,226

	Approved Budget 2019	Approved Budget 2020	Actual Q2 2019	Actual Q2 2020	Forecast
Total Operations Budget Expenses					
Salary, wages & benefits	2,150,795	2,121,289	940,680	864,546	1,967,762
Contracts & Services	298,777	229,702	188,029	79,325	229,377
Vehicles & Equipment	92,825	94,025	34,077	24,068	80,725
Materials & Supplies	252,215	252,100	157,098	100,288	212,450
Training & Workshops	23,735	22,650	7,578	5,102	8,130
Donations	3,800	3,200	3,000	3,000	3,000
Other	169,950	168,800	91,604	93,513	181,605
To Reserves	59,372	82,482	-	-	35,168
To Deferred Revenue	-	-	-	-	
Total Operating Budget	3,051,470	2,974,247	1,422,066	1,169,842	2,718,217

	Approved Budget 2019	Approved Budget 2020	Actual Q2 2019	Actual Q2 2020	Forecast
Total Operations Budget Funding					
Municipal Levy	1,337,520	1,380,597	665,319	690,299	1,380,597
CAA S39	71,779	37,325	-	-	37,325
MECP (DWSP)	158,738	186,811	53,935	176,155	192,000
Agreements, MOUs and Grants	416,686	163,500	134,956	196,771	227,183
Services & Sales	1,006,636	1,146,564	594,722	427,900	888,448
Donations	1,600	7,450	5,325	6,242	11,400
Interest & Gains	2,500	2,000	4,041	3,281	9,600
From Reserves	56,011	50,000	-	-	60,673
From Deferred Revenue	-	-	-		
Total Operating Budget	3,051,470	2,974,247	1,458,299	1,500,647	2,807,226

GREY SAUBLE CONSERVATION AUTHORITY 2020 APPROVED CAPITAL BUDGET

EXPENSES

	Approved Budget 2019	Approved Budget 2020	Actual Q2	Forecast
WATER MANAGEMENT				
Flood Forecasting & Warning				
To Reserves	25,000	25,000		25,000
Flood Control Structures				
Materials & Supplies	20,000			
WATER MANAGEMENT Subtotal	45,000	25,000	-	25,000
CONSERVATION LANDS Policy/Operations				
Entrance Signs				
Contracts & Services	10,000	14,800		14,800
 Spirit Rock - Washroom Upgrade				
Contracts & Services		10,000		10,000
 Bruce's Caves - Washroom Upgrade				
Contracts & Services		10,000		10,000
 Lake Charles - Washroom Removal				
Contracts & Services		2,000		2,000
 Indian Falls - Washroom Upgrades				
Contracts & Services		15,000		15,000

FUNDING

	Approved Budget 2019	Approved Budget 2020	Actual Q2	Forecast
WATER MANAGEMENT				
Flood Forecasting & Warning				
Municipal Levy	25,000	25,000		25,000
Flood Control Structures				
WECI	10,000	0		
Reserves	10,000	0		
WATER MANAGEMENT Subtotal	45,000	25,000	-	25,000
CONSERVATION LANDS Policy/Operations				
Entrance Signs				
Municipal Levy	5,200	4,800		4,800
Reserves	4,800	10,000		10,000
 Spirit Rock - Washroom Upgrade				
Reserves		5,500		5,500
Sales and Services		4,500		4,500
 Bruce's Caves - Washroom Upgrade				
Municipal Levy				
Sales and Services		10,000		10,000
 Lake Charles - Washroom Removal				
Municipal Levy				
Sales and Services		2,000		2,000
 Indian Falls - Washroom Upgrades				
Municipal Levy				
Agreements/MOUs/Grants		7,500		7,500
Sales and Services		7,500		7,500

EXPENSES					FUNDING				
	Approved Budget 2019	Approved Budget 2020	Actual Q2	Forecast		Approved Budget 2019	Approved Budget 2020	Actual Q2	Forecast
Arran Lake Pavilion Contracts and Services		40,000		-	Arran Lake Pavilion Municipal Levy Donations Reserves Sales and Service		4,700 25,000 9,300 1,000		
Inglis Falls - Septic Contracts & Services	40,000			40,000	Inglis Falls - Septic Sales and Services Reserves	25,000 15,000			25,000 15,000
Inglis Falls - Safety Fence Contracts & Services	8,000			3,000	Inglis Falls - Fence Sales & Services	8,000			3,000
Various - Stone Repointing Projects Contracts & Services	10,000				Various - Stone Repointing Projects Levy Reserves	10,000			
Contracts & Services		6,000		6,000			6,000		6,000
CONSERVATION LANDS Subtotal	91,566	97,800	-	100,800	CONSERVATION LANDS Subtotal	91,566	97,800	-	100,800
Administration, Finance & Human Resources					Administration, Finance & Human Resources				
Admin Centre refurbish Concept Design Contracts & Services	20,000	20,000		20,000	Admin Centre refurbish Concept Design Reserves	20,000	20,000		20,000
Admin Centre - Renewal Contracts & Services	20,000	20,000		20,000	Admin Centre - Renewal Reserves	20,000	20,000		20,000
Admin Centre Meeting Tables Materials and Supplies		6,000		6,000	Admin Centre Meeting Tables Municipal Levy		6,000		6,000
Administration, Finance & Human Resources Subtotal	40,000	46,000	-	46,000	Administration, Finance & Human Resources Subtotal	40,000	46,000	-	46,000
Conservation Information, Education &					Conservation Information, Education &				

EXPENSES				
	Approved Budget 2019	Approved Budget 2020	Actual Q2	Forecast
Community Outreach - Interpretive Signs				
Contracts & Services	7,000			
Conservation Information, Education & Community Outreach - Subtotal	7,000			
GIS, Information Management & Information Technology - GPS units				
Materials & Supplies	2,000			
GIS, Information Management & Information Technology - 2020 Servers				
Materials & Supplies	500			
Equipment		5,000		5,000
GIS, Information Management & Information Technology - GPS Units/Tablets				
Materials & Supplies	3,000	1,500		-
GIS, Information Management & Information Technology - 2020 Screen				
Materials & Supplies	500			
Equipment		1,000		-
GIS, Information Management & Information Technology - Workstations				
Materials & Supplies	8,000	8,000	5,587	8,000
GIS, Information Management & Information Technology - Subtotal	14,000	15,500	5,587	13,000

FUNDING				
	Approved Budget 2019	Approved Budget 2020	Actual Q2	Forecast
Community Outreach				
Donations	1,000			
Reserves	9,200			
Conservation Information, Education & Community Outreach - Subtotal	10,200			
GIS, Information Management & Information Technology - GPS units				
Agreements, MOUs and Grants	2,000			
GIS, Information Management & Information Technology - 2020 Servers				
From Reserves	500	5,000		5,000
GIS, Information Management & Information Technology - GPS Units				
From Reserves	3,000			
Municipal Levy		1,500		-
GIS, Information Management & Information Technology - 2020 Smart Screen				
From Reserves	500			
Municipal Levy		1,000		-
GIS, Information Management & Information Technology - Workstations				
Municipal Levy	8,000	8,000	5,587	8,000
GIS, Information Management & Information Technology - Subtotal	14,000	15,500	5,587	13,000

EXPENSES

	Approved Budget 2019	Approved Budget 2020	Actual Q2	Forecast
Fleet & Equipment Management				
Vehicles & Equipment	60,000			60,000
To Lands Operations	4,000			-
Fleet & Equipment Management Subtotal	64,000	-	-	60,000
Total Proposed Capital Budget	261,566	184,300	5,587	244,800
Total Capital Budget				
Salary, wages & benefits				
Contracts & Services	138,566	137,800	-	140,800
Vehicles & Equipment	60,000	-	-	60,000
Materials & Supplies	34,000	21,500	5,587	19,000
Training & Workshops				
Donations				
Other	4,000	-	-	-
To Reserves	28,000	25,000	-	25,000
To Deferred Revenue				
Total Capital Budget	264,566	184,300	5,587	244,800

2019 Capital Projects completed are excluded

FUNDING

	Approved Budget 2019	Approved Budget 2020	Actual Q2	Forecast
Fleet & Equipment Management				
Services & Sales	60,000			
From Reserves	4,000			60,000
Fleet & Equipment Management Subtotal	64,000	-	-	60,000
Total Proposed Capital Budget	261,566	184,300	5,587	244,800
Total Capital Budget				
Municipal Levy	51,036	51,000	5,587	43,800
CAA S39				
MECP (DWSP)				
Agreements, MOUs and Grants	12,000	7,500	-	7,500
Services & Sales	37,000	25,000	-	52,000
Donations	21,566	25,000	-	-
Interest & Gains				
From Reserves	142,964	75,800	-	141,500
From Deferred Revenue				
Total Capital Budget	264,566	184,300	5,587	244,800



Bothwell's Creek

Subwatershed Report Card 2019



Stream Health

Forest Conditions

Wetland Conditions

Groundwater Information



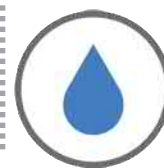
Good
B



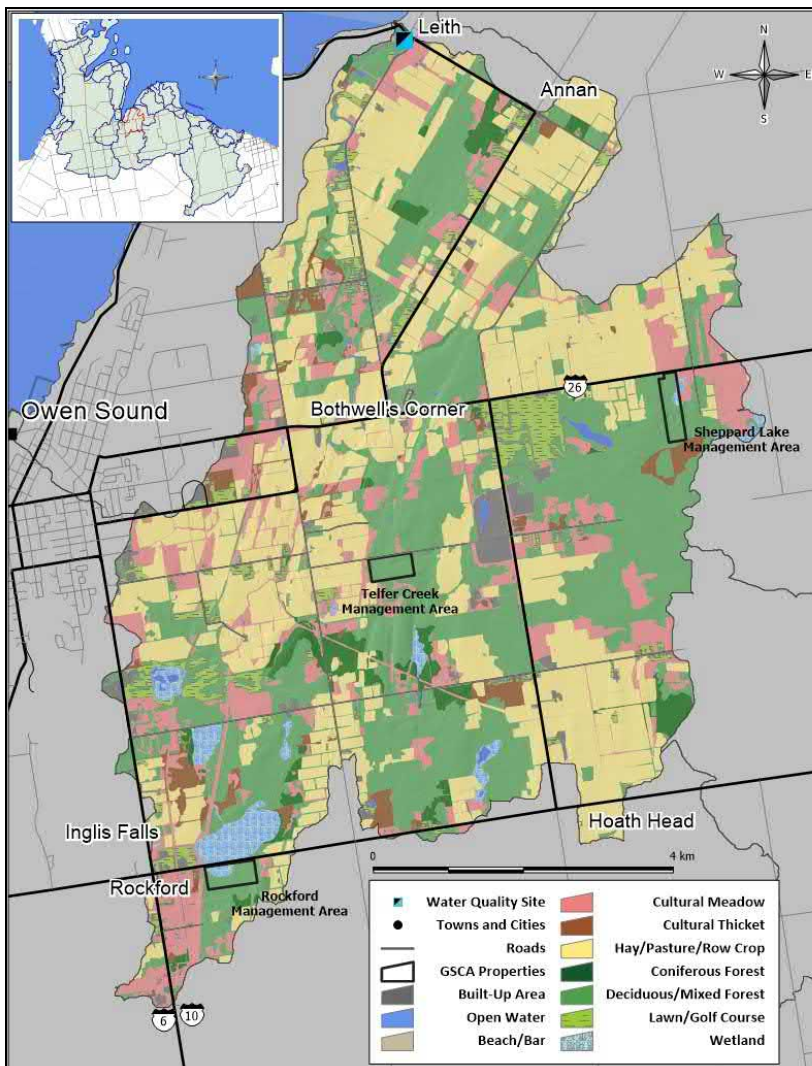
Good
B



Poor
D



Insufficient
Data



Land cover based on 2015 SOLRIS data and further edits completed by GSCA staff

Subwatershed Area

6447.88 ha



Population: 560



One privately
owned dam

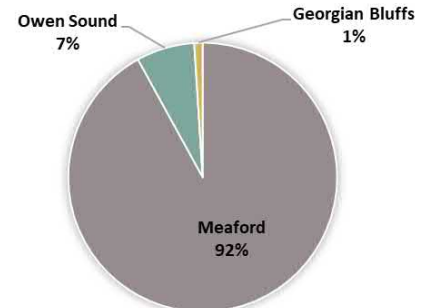


No sewage
treatment plants

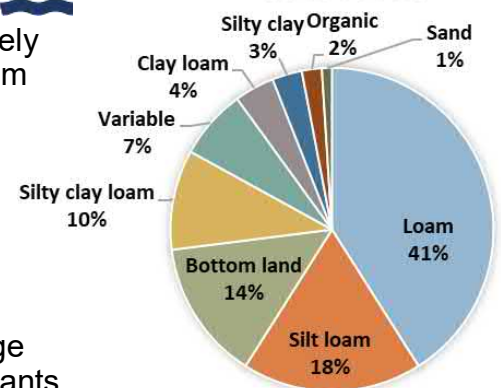


58.7 ha of public
land

MUNICIPALITIES



SOIL TYPES



**Areas of Natural
and Scientific
Interest (ANSI):
2.5 ha of
Inglis Falls**



Stream Health

Status: B—Good

Trend: Stable

Ratings: A-Excellent B- Good C- Fair D-Poor F- Very Poor Insufficient Data

Overall, surface water quality in Bothwell's Creek received a "B" letter grade, indicating good water quality. There is one sampling location within this subwatershed which is part of the Provincial Water Quality Monitoring Network (PWQMN). The one sampling site within the subwatershed is located on private property south of the bridge near Leith, which is the downstream end of the subwatershed.

Total Phosphorus levels have stayed consistent throughout the 15-year monitoring period, with results indicating trace amounts just above detection. It is important to continue to monitor this parameter as there is growing concern throughout the Great Lakes Basin over harmful algal blooms which are caused by high phosphorus loading. Agricultural runoff, golf course and residential fertilizers, as well as failing septic systems are all potential point sources that could increase Phosphorus levels. Landowners are urged to continue implementing Best Management Practices (BMP's) in order to maintain current results.

Fecal bacteria (E.coli) monitoring began in 2011, and since that time levels remain below the 100 count level. This level is a provincial target used to determine if beaches are safe for swimming. High E.coli counts are common after large rain events when manure from farm fields enters waterways or at sites with a high population of waterfowl.



Benthic invertebrates are small aquatic animals that live on the bottom of streams. These communities are excellent indicators of stream health because they are very sensitive to changes in environmental conditions. The Family Biotic Index (FBI) was the index used to determine this stream health grade, however the BioMAP Index, which is a more sensitive index to stream health is presented on Page 7 along with more chemistry results. Both indices demonstrate that the benthic community has stayed consistent over 15 years, which supports the chemistry results in classifying Bothwell's Creek surface water quality as "good". The below table shows the results for the three parameters that count towards the report card grade. Sample size is represented by "n".

Indicators	2003-2008	2008-2013	2013-2018	Guideline	Indicator Description
Total Phosphorus (mg/L)*	0.02 B (n=40)	0.01 A (n=40)	0.01 A (n=40)	0.030 B <i>Aquatic Life</i>	Phosphorus is found in products such as fertilizer and detergents, and contributes to excess algal growth, which results in low oxygen in streams and lakes.
Bacteria (# per 100 mL)**	N/A	79.5 B (n=40)	86.3 B (n=40)	100 B <i>Recreation</i>	E.coli is a fecal coliform bacteria found in human and animal waste. It is a strong indicator of the potential to have organisms present that could harm human health.
Benthic Score FBI Index***	N/A	4.16 A (n=3)	4.92 B (n=1)	<5.00 B <i>Target Only</i>	Benthic macroinvertebrates are small aquatic animals that live at the bottom of streams. These organisms are good indicators of water quality and are commonly used to diagnose watershed health.

*75th percentile, MECP PWQMN data. Grades based on Conservation Ontario standards (2017). **Geometric mean, GSCA data.

***Average. Grades based on Conservation Ontario standards (2017).



Forest Conditions

Status: B—Good

Trend: No Trend

Ratings:

A-Excellent

B- Good

C- Fair

D-Poor

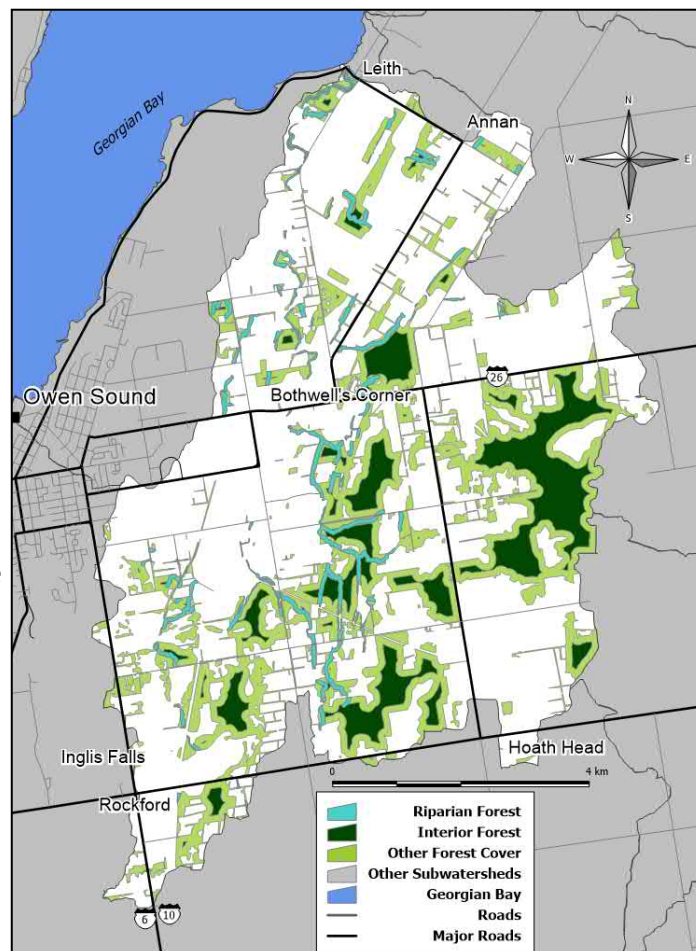
F- Very Poor

Insufficient Data

Forest cover is calculated by using up-to-date aerial imagery and applying Geographical Information Systems (GIS) mapping and analysis techniques. It takes 20 years for trees to become mature enough to count towards the watershed report card. Currently, GSCA has planted 33 hectares in this subwatershed.

This map shows overall forest cover, interior forest, and riparian forests on public and private properties throughout the subwatershed. There is good forest cover in the headwaters of the subwatershed, primarily on the Niagara Escarpment. However, due to the major land use in Bothwell's Creek subwatershed being agriculture, trees will typically be along fields and riparian areas rather than large stands. Interior forest needs another 1.73% of area in order to become an A grade. There are three GSCA properties in the Bothwell's Creek subwatershed, totaling 57 hectares of forest.

Riparian and interior forests provide important habitats and wildlife corridors, making this a key area for conservation efforts and habitat protection. Forests Ontario, Alternative Land Use Services (ALUS) and GSCA have programs that provide subsidies and incentives for landowners to plant more trees. GSCA also assists landowners with the Managed Forest Tax Incentive Program, which allows landowners with 4 hectares to be eligible for a tax break.



Indicators	2003-2008*	2008-2013*	2013-2018*	ECCC Guideline**	Indicator Description
% Forest Cover	32.81 B	35.62 A	37.23 A	30 B	Forest cover is the percentage of the watershed that is forested. Watersheds should contain at least 30% forest cover to sustain native flora and fauna (ECCC, 2013).
% Forest Interior	10.33 B	9.81 B	9.77 B	10 B	Forest interior is the remaining portion of a woodlot when a 100 metre buffer is removed. Forest interior provides native species with undisturbed habitat.
% Riparian Zone Forested	38.72 C	36.62 C	40.07 C	50 B	Percent riparian zone forested is a measure of the amount of forest cover within a 30 metre riparian/ buffer zone adjacent to all open watercourses. Riparian zones protect water quality and provide important ecological services, habitat and movement corridors for wildlife.

*Data based on most current air photography for that time period (currently 2015). **ECCC Guideline—Environment Canada guideline based on “How Much Habitat is Enough?” (2013). Grades based on Conservation Ontario standards (2017).



Wetland Conditions

Status: D—Poor
Trend: No Trend

Ratings: A-Excellent B- Good C- Fair D-Poor F- Very Poor Insufficient Data

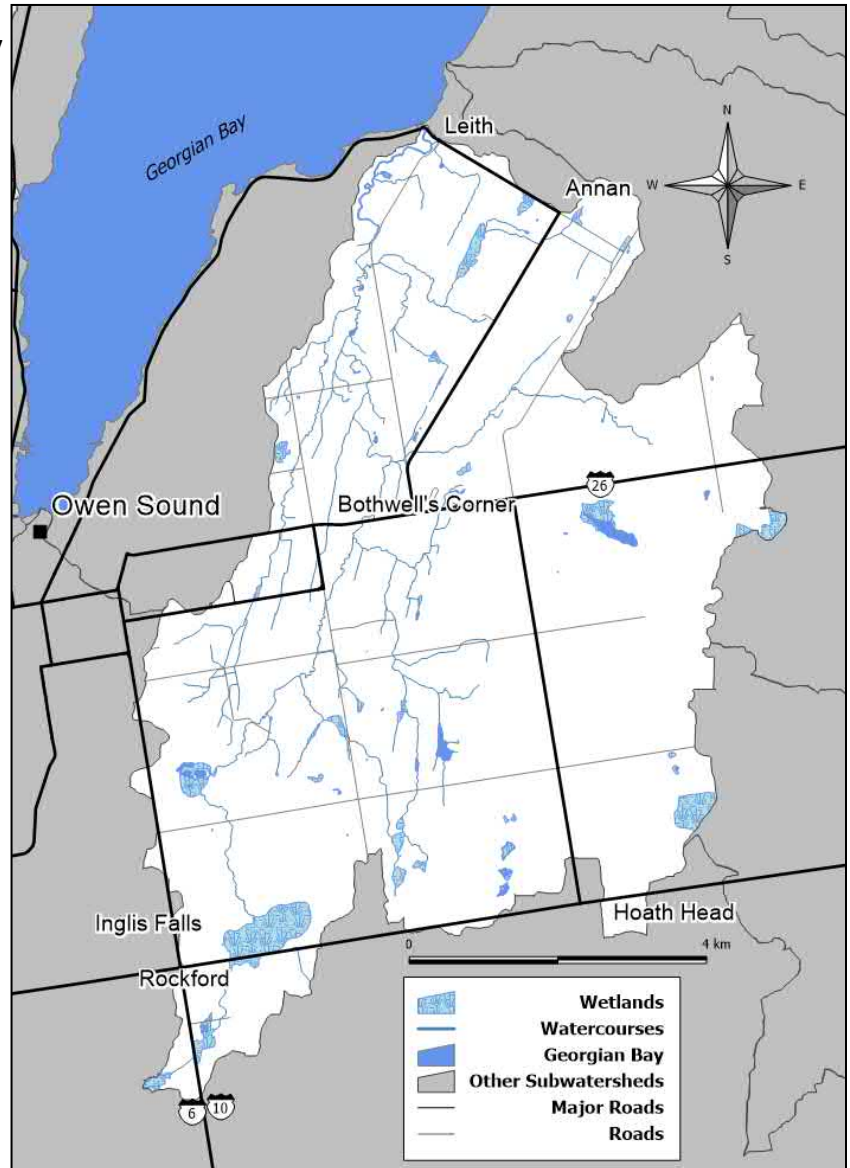
Wetlands are an important part of ecological function within a subwatershed. They provide many ecosystem services including: improving water quality by filtering runoff, assisting with flood control by storing water, and maintaining hydrological function during dry periods. Wetlands are also home to many rare species of flora and fauna.

Wetland cover in Bothwell's Creek subwatershed was calculated using up-to-date aerial photography and applying Geographic Information Systems (GIS) and analysis techniques. Grey Sauble staff are constantly working to improve wetland information on a local scale.

Coverage in this subwatershed is poor when compared to Environment and Climate Change Canada's habitat recommendations. Bothwell's Creek subwatershed currently has 3% wetland cover, with the recommended coverage being 10%. Once wetlands are gone, it is extremely difficult to get them back.

There are many threats to wetlands in Southern Ontario, including land conversion for development, drainage for agriculture and invasive species such as Phragmites.

Organizations including Ducks Unlimited Canada, ALUS Grey Bruce and GSCA are interested in working with landowners to protect wetland features, deliver restoration efforts, and create new wetland habitat.



Indicator	2013-2018*	ECCC Guideline**	Indicator Description
Wetland Cover (%)	3 D	10 B	Percent wetland cover is the percentage of the watershed that is in wetland cover. Wetlands include swamps (treed and thicket), bogs, fens and marshes.

*Data based on 2015 colour air photography. **EC Guideline—Environment Canada guideline based on “How Much Habitat is Enough?” (2013) Grades based on Conservation Ontario standards (2017).



Groundwater

Status:
Insufficient Data

Trend: N/A

Groundwater is water that is stored in bedrock fractures or between sand/gravel layers in aquifers. Through the Provincial Groundwater Monitoring Network (PGMN) partnership with the Ministry of Environment, Conservation and Parks, GSCA monitors water levels and water quality in 10 wells annually within the Grey Sauble watershed. However, there are no PGMN wells in Bothwell's Creek subwatershed. In order to determine letter grades for groundwater, there would need to be multiple sampling locations and a minimum of five years of data.

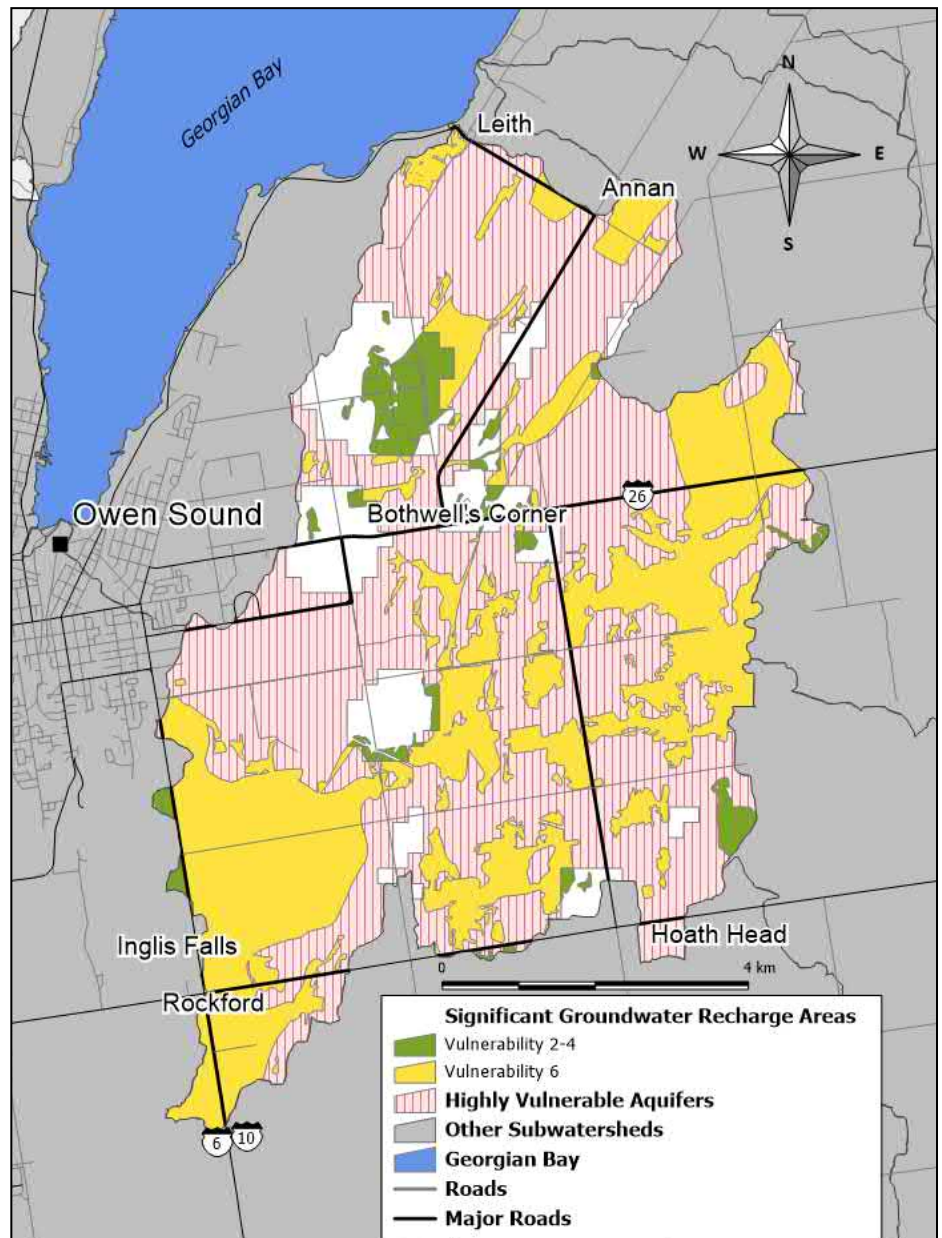
Surficial Geology and Soils

The headwaters of Bothwell's Creek subwatershed consists of sandstone, shale, dolostone, siltstone, and is part of the Amabel Formation. The middle section of the watershed also consists of shale, limestone, dolostone, and siltstone, but is part of the Queenston Formation. The mouth of Bothwell's Creek, closer to Georgian Bay's shoreline is made up of sandstone, shale, dolostone, siltstone and is part of the Clinton-Cataract Group Formation. The majority of Bothwell's Creek subwatershed is variations of loam. Medium to moderately fine loam and silty loam are the two dominant soil textures.

Aquifers

All residents in Bothwell's Creek subwatershed receive their drinking water from private groundwater or surface water wells. Under the Drinking Water Source Protection Program, the area around Bothwell's Creek was identified as a Highly Vulnerable Aquifer, as this aquifer is particularly susceptible to contamination due to the depth and type of soil and rock. Much of the Grey Sauble watershed is identified as Highly Vulnerable due to the soils and karst bedrock features in this area. The areas shown in yellow and green are Significant Groundwater Recharge Areas.

Recharge occurs when rain or snow melt seeps into the ground and replenishes aquifers. Recharge areas have loose, permeable soils such as sands and gravels. A recharge area is considered significant when it helps maintain the water level in an aquifer that supplies a community with drinking water.





Actions for Improvement



On the Shore

- Leave a minimum of 3 feet of native vegetation in place. Having a vegetated buffer helps to filter runoff, prevent erosion, maintain water levels, and deter waterfowl.
- Minimize fertilizer use to prevent excess nutrients from entering the lake.
- Learn how to identify and control invasive species.
- Regularly service your septic system.
- Decommission unused wells to prevent contaminants from entering groundwater.



On the Farm

- Improve water quality and habitat by fencing livestock out of streams.
- Maintain a vegetated buffer between crop land and waterways.
- Upgrade manure storage and barn eavestroughing to divert clean water.
- Reduce soil erosion through no-till, residue management and cover crops.
- Plant windbreaks to protect your soils.
- Reduce nutrient loss by implementing a nutrient management plan.
- Conserve water and minimize pesticide use.



In Town

- Leave a minimum of 3 feet of native vegetation along creeks and lakes. Plant native species to protect the shoreline and create habitat.
- Conserve water indoors and collect water outdoors using a rain barrel.
- Increase your land permeability by using rain gardens, mulch or permeable pavement.
- Minimize fertilizer use to prevent excess nutrients from entering streams.
- Dispose of chemicals properly and do not pour harmful substances down the drain as these outlet to local waterways.



For Municipalities and other Agencies

- Work together with GSCA on consistent planning regulations and adoption of bylaws that will protect watercourses, wetlands, and vegetated riparian buffers.
- Adopt your own environmental sustainability initiatives and community grants.
- Municipalities, developers and GSCA staff work together on adoption of Low Impact Development (LID) practices and promote natural designs (bio-swales, infiltration trenches, permeable pavement) and stormwater retrofits.
- Secure environmentally significant properties, specifically wetlands, shorelands and properties that will connect natural features.
- Ensure appropriate approvals and/or permits are obtained so that the approval authority can monitor for implementation of approval conditions.



Surface Water Quality Data Continued:

Chemical parameters	2003-2008	2008-2013	2013-2018
Nitrate (mg/L)*:	0.82 (n=40)	0.83 (n=40)	0.99 (n=40)
Chloride (mg/L)*:	33.13 (n=40)	35.95 (n=40)	33.73 (n=40)
Total suspended solids (mg/L)*:	6.73 (n=40)	2.93 (n=40)	3.23 (n=40)

In addition to the parameters used to grade the surface water quality section, a suite of other chemical parameters are tested on water samples, including: nitrate, chloride and total suspended solids. Nitrates are present in water as a result of decay of plant or animal

*75th percentile, MECP PWQMN data. "n" represents sample size

material, agricultural fertilizers, domestic sewage or treated wastewater contamination, and geological

formations containing soluble nitrogen compounds. The allowable limit for the protection of aquatic life is 550 mg/L short term, or 13 mg/L long term (CCME, 2012). The results shown in the above table indicate that nitrate concentrations are far below the allowable limit and have remained consistent over 15 years.

Chloride occurs naturally in the environment in mineral deposits and therefore many surface water and groundwater sources are naturally saline. Chloride can be added to surface water through anthropogenic sources such as: salting of roads, agricultural or industrial fertilizers and sewage treatment. The allowable limit for chlorides in freshwater is 640 mg/L short term and 120 mg/L long term (CCME, 2011). The results shown in the above table indicate that chloride concentrations are below the long term allowable limit and have remained consistent over 15 years.

Total suspended solids (TSS) in healthy streams have levels that show less than a 25 mg/L increase over background levels for short-term events and less than a 5 mg/L increase over longer term exposures (CCME, 2002). Suspended matter consists of silt, clay, fine particles of organic and inorganic matter, soluble organic compounds, plankton, and other microscopic organisms. The amount and type of suspended solids in surface water directly relates to the turbidity, or clarity of the water (CCME, 2002). TSS results have stayed consistent over 15 years and are therefore indicative of a healthy stream.

Additional Benthic Scoring:

	2003-2008	2008-2013	2013-2018	Guideline
Benthic Score BioMAP* (Qualitative)	3.09 B (n=4)	3.1 B (n=1)	3.25 B (n=1)	>3.2 B <i>Target Only</i>

The BioMAP Index is a more sensitive index than Hilsenhoff Family Biotic Index and therefore can provide further insights into the benthic invertebrate community and surface water quality. An index is a way to convert biological data into a measure of water quality. The BioMAP Index measures water quality based on the presence of species at the site. All

*Average; Grades based on GSCA standards "n" represents sample size

species are put into a list and ranked based on how sensitive or tolerant they are to environmental stresses (Griffiths, 1999). It is important to note that the BioMAP Protocol identifies benthic invertebrates to species level, whereas Family Biotic Index is to family level.

BioMAP attempts to classify watersheds as impaired, unimpaired or in transition based on the size of the watercourse: creek <4 m, stream 4-16 m, river 16-64 m. These classifications and how they relate to the report card grading scores can be found on Page 10. The use of the BioMAP Protocol and BioMAP Index for the subwatershed report cards is unique to GSCA.

Canadian Council of Ministers of the Environment. (2012). *Nitrate Fact Sheet*. Retrieved online from, <http://cegg-rcqe.ccme.ca/download/en/197/>

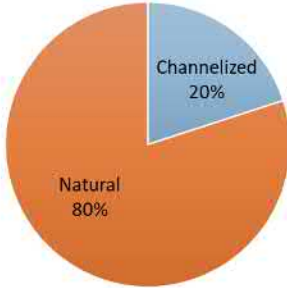
Canadian Council of Ministers of the Environment. (2011). *Chloride Fact Sheet*. Retrieved online from, <http://cegg-rcqe.ccme.ca/download/en/337/>

Canadian Council of Ministers of the Environment. (2002). *Total Particulate Matter*. Retrieved online from, <http://cegg-rcqe.ccme.ca/download/en/217/>

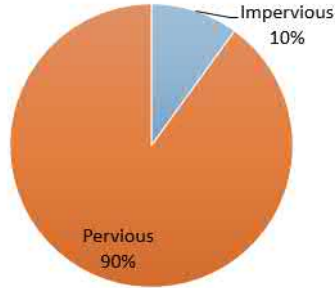
Griffiths, R. (1999). *BioMAP: Bioassessment of Water Quality*. Niagara College: Canada: The Centre for Environmental Training.

Additional Watershed Features

Watercourse Type



Land Permeability



Total length: 14.2 km

42% of this subwatershed is regulated under the Niagara Escarpment Commission.



Rare Species

Bobolink, Meadowlark, American Hart's Tongue Fern, Butternut



Invasive Species

Round Goby, Phragmites, Wild Chervil, European Buckthorn, Beech Bark Disease



Fish Species

Brook, Rainbow and Brown Trout, Coho and Chinook Salmon, Smallmouth Bass and Yellow Perch etc.



Potential Stressors

Golf course irrigation, quarry activities, agricultural run-off, failing septic systems



In 2019, a private landowner within Bothwell's Creek subwatershed fenced out 995 m of surface water from livestock access. This project was made possible through financial support from Bruce Power and ALUS Grey Bruce. If you are interested in completing your own stewardship project, please contact our Stewardship Technician for grant opportunities and support.

Thank You!

To all the landowners, community groups, schools, businesses, municipalities and other government agencies who value watershed health and support our efforts to monitor and protect it!



References for Report Card Grading

The below tables were developed by Conservation Ontario and the Watershed Report Card Working Group. The exception to the water quality table is the column representing BioMAP, which was developed by GSCA. These tables show how the grades were determined for each category. Points are awarded per category based on the grade and the final grade is based on an average of all points.



Total Phosphorus (mg/L)	E.coli (#/100 mL)	Benthic Invertebrates (FBI)	Benthic Invertebrates (BioMAP)	Point Score	Grade	Overall Surface Water Quality Grade	
						Final Points	Final Grade
<0.020	0-30	0.00-4.25	Creek (<4m) 4.0 Stream (4-16m) >3.4 River (16-64m) >3.0	5	A	>4.4	A
0.020-0.030	31-100	4.26-5.00	Creek (<4m) >3.4 Stream (4-16m) >3.0 River (16-64m) >2.4	4	B	3.5-4.4	B
0.031-0.060	101-300	5.01-5.75	Creek (<4m) 3.4-3.2 Stream (4-16m) 3.0-2.6 River (16-64m) 2.4-2.0	3	C	2.5-3.4	C
0.061-0.180	301-1000	5.76-6.50	Creek (<4m) <3.2 Stream (4-16m) <2.6 River (16-64m) <2.0	2	D	1.5-2.4	D
>0.180	>1000	6.51-10.00	Creek (<4m) <2.6 Stream (4-16m) <2.0 River (16-64m) <1.5	1	F	<1.5	F



% Forest Cover	% Interior Forest	% Riparian Forest	Point Score	Grade	Overall Forest Conditions	
					Final Points	Final Grade
>35.0	>11.5	>57.5	5	A	>4.4	A
25.1-35.0	8.6-11.5	42.6-57.5	4	B	3.5-4.4	B
15.1-25.0	5.6-8.5	27.5-42.5	3	C	2.5-3.4	C
5.0-15.0	2.5-5.5	12.5-27.5	2	D	1.5-2.4	D
<5.0	<2.5	<12.5	1	F	<1.5	F



Grade	% Wetland Cover
A	>11.5
B	8.6-11.5
C	5.6-8.5
D	2.5-5.5
F	<2.5



Grey Sauble Conservation Authority (GSCA) is one of 36 Conservation Authorities (CA) in Ontario. Guided by the Conservation Authorities Act of 1946, which was recently updated in 2017, Ontario's CAs are charged with the responsibility of "ensuring the conservation, restoration, development and management of Ontario's natural resources through programs that balance human, environmental and economic needs."



Grey Sauble Conservation Authority
237897 Inglis Falls Rd.
RR4 Owen Sound, ON
N4K 5N6

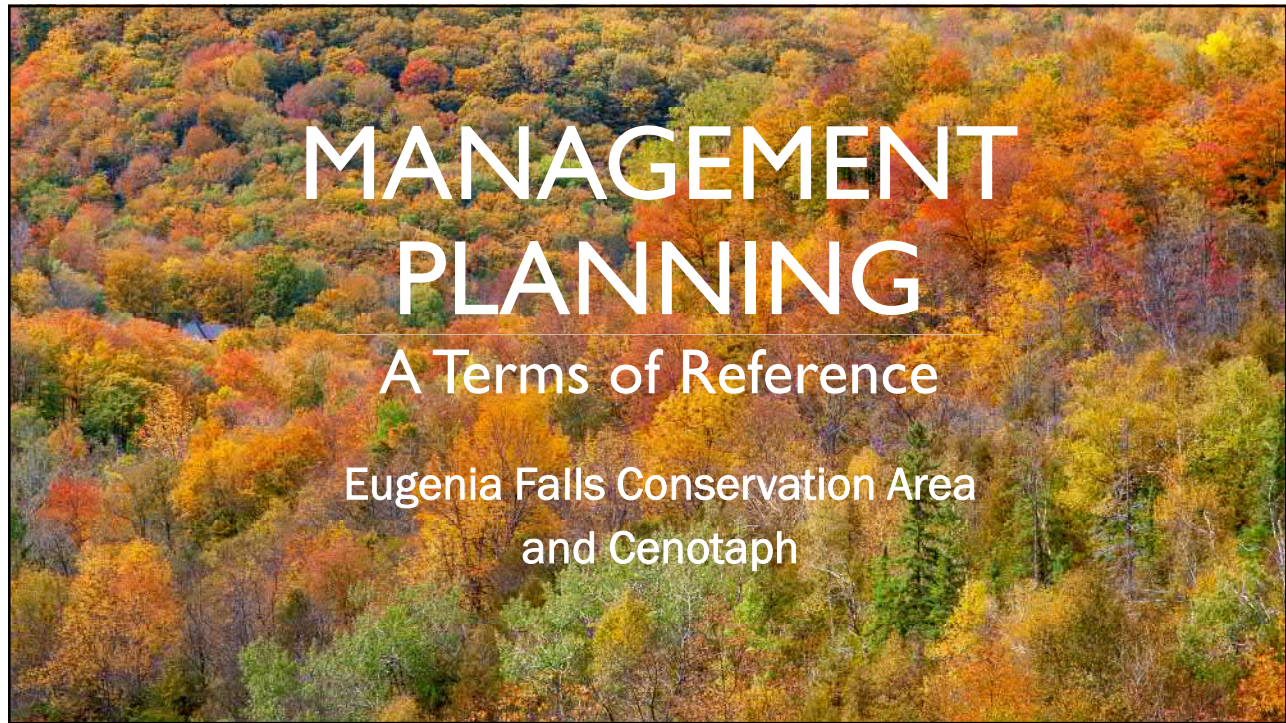
519-376-3076



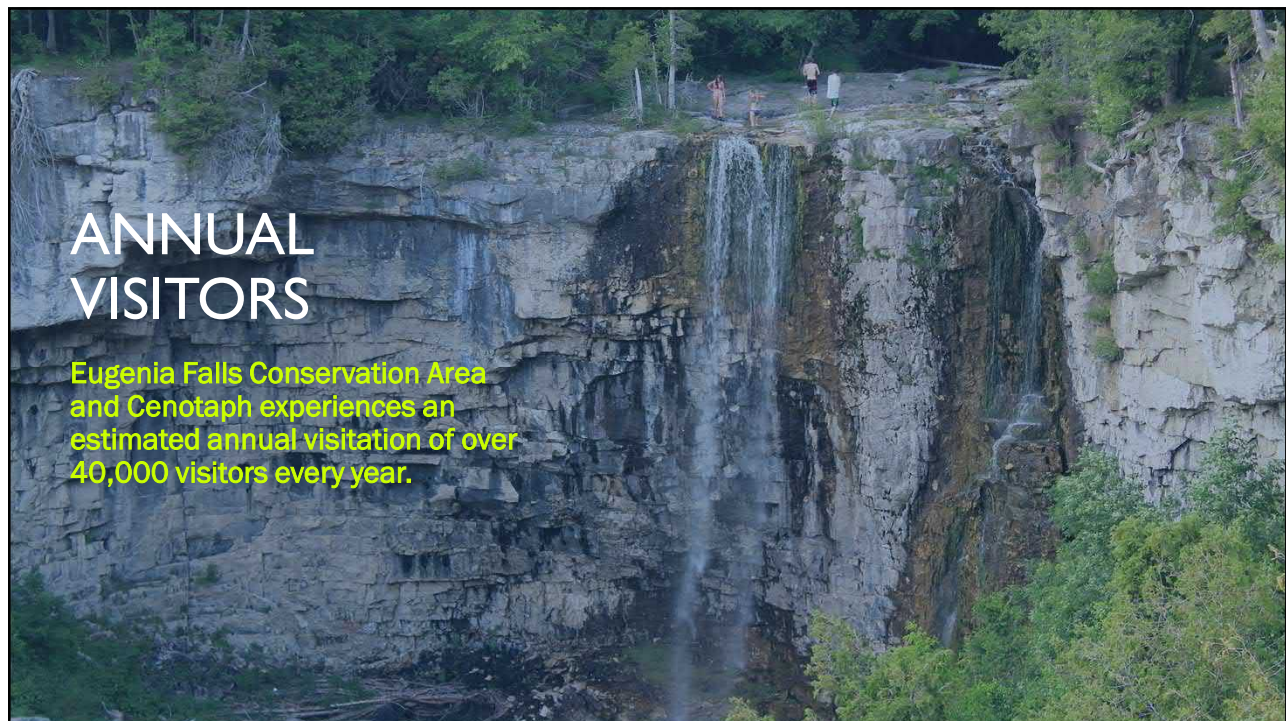
MANAGEMENT PLANNING

A Terms of Reference

Eugenia Falls Conservation Area
and Cenotaph



1



2



3



4



PLANNING PROCESS

Phase One:

Inventory and Initial Consultation

- Develop a Terms of Reference
- Establish an Advisory Committee and Host Initial Meeting
- Reach out to Partners, Stakeholders, and Neighbours
- Web and Social media outreach
- Develop initial discussion zone mapping
- Literature Review of Historical Information
- Collect Baseline Data

5

5



PLANNING PROCESS

Phase Two:

Draft Reporting and Concept Design

- Develop public use area and site restoration concepts
- Host public meetings
- Develop site concept design alternatives
- Host Advisory Committee Meeting
- Determine draft management zones
- Analyze and Report on Baseline Data
- Develop draft management policies
- Develop draft objectives and directions
- Develop overall draft trail plan
- Circulate study newsletter update

6

6



PLANNING PROCESS

Phase Three: Refinements and Finalization

- Host public meetings to review final draft
- Finalize public use, property management, and restoration plans
- Host one Advisory Committee Meeting
- Develop Plan implementation strategy and costing
- Obtain MNRF and GSCA Board Endorsement of the Plan

7



PUBLIC CONSULTATION

Public Consultation is a Mandatory Process under NEPOSS and is also vital to GSCA's Strategic Initiatives

Inclusive Consultation

- Park Users
- Interested Partners, Stakeholders, and User Groups
- The Immediate Community (ie: within 120m of property)
- Board of Directors, Committees, Staff, Volunteers
- Approval Authorities

Consultation Mechanisms

- Advisory Committee
- Mailouts
- Media, Social Media, and Website
- User Surveys
- Request for Comments
- One-on-One Discussions
- Group Discussions / Open House(s)
- Site Visits

8



ADVISORY COMMITTEE

GSCA will invite relevant Municipalities, Stakeholders, Partners, and Community members to participate on an Advisory Committee to steer the development of the Management Plan

- GSCA Board Representatives (2)
- GSCA Staff Representatives (2)
- Grey County Staff Representative
- Municipality of Grey Highlands Staff Rep
- Saugeen Ojibway Nation Rep
- Metis Nation of Ontario Rep
- GSC Foundation Rep
- Bruce Trail Conservancy Rep
- Local Neighbourhood Rep
- Broader Community Rep
- Local Business or Tourism Rep
- Grey Bruce Health Unit Rep
- Agency Reps (MECP, MNRF, NEC)

9



DELIVERABLES

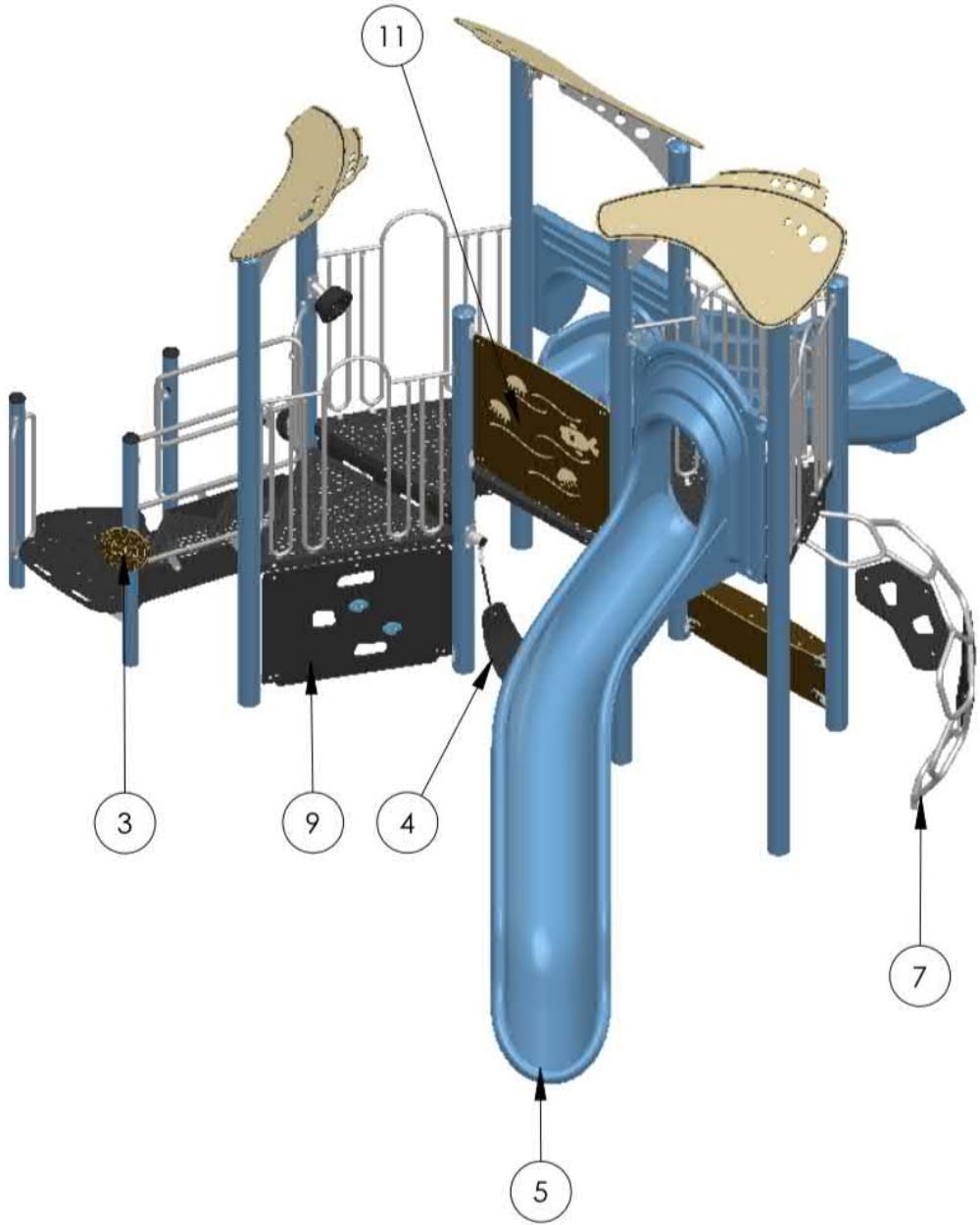
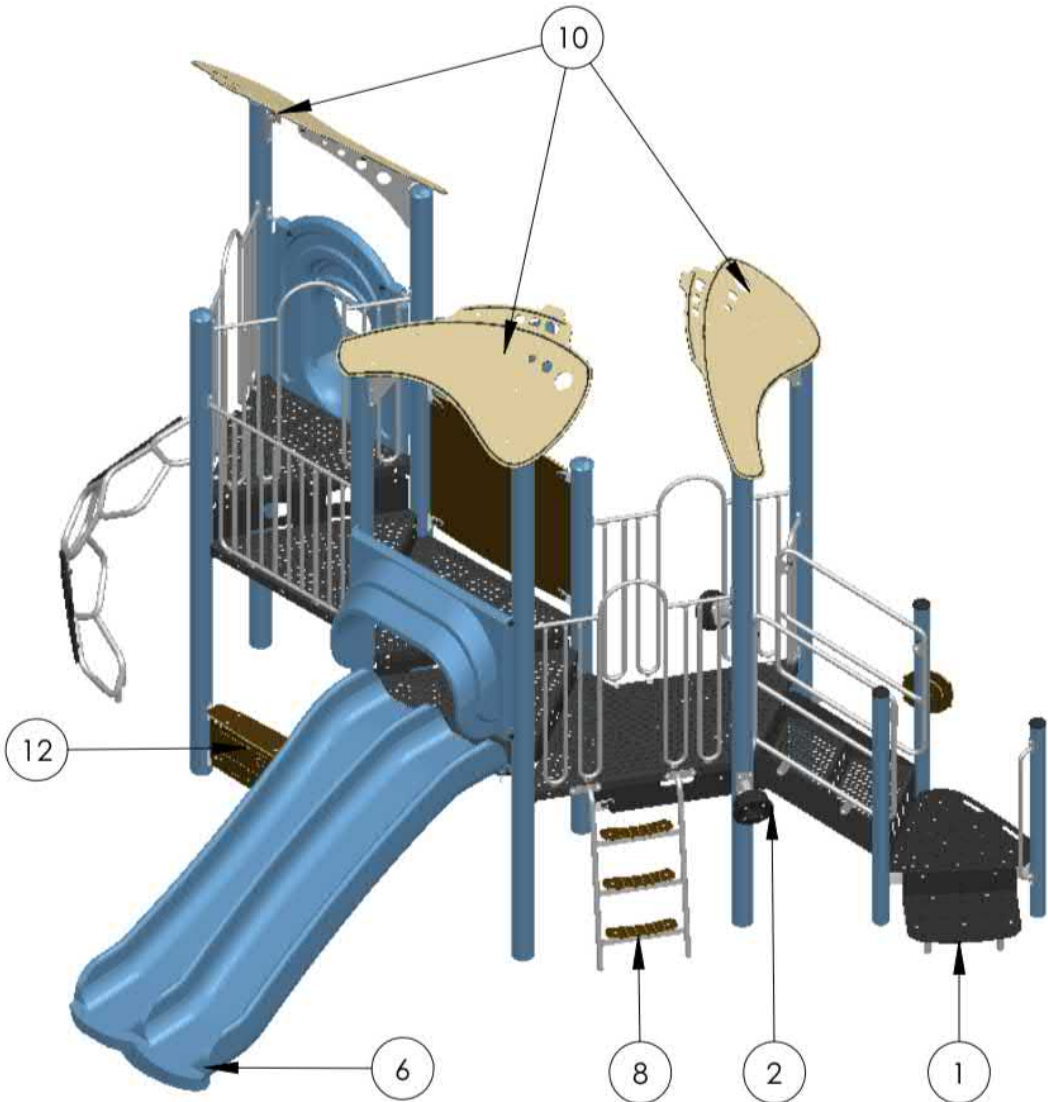
- Identification of existing property features
- Evaluation of property relative to existing policies and site conditions
- Establishment of conservation land management zones
- Management guidelines and recommendations for each zone
- Public use site development plan, environmental restoration plan, and trail plan
- Implementation strategy and costs

10



11

#	- DESCRIPTION -
1	3' Transfer station (44)
2	Phone (5.0 dia.post)
3	Boat Steering Wheel (3.5 diameter post)
4	The hammock
5	6' Modslide (JA) (44)
6	4' Double slide with waves
7	6' Honeycomb Climber
8	3'-6 mini-climber
9	3' Climbing Wall (44)
10	Boat Roof (44)
11	Engraved Jellyfish Theme Panel (44)
12	Boat Game Counter (44)



Jambette.com

700, Des Calfats, Lévis, Qc, G6Y 9E6
(877) 363-2687

Customer:
OPENSOURCE SOLUTIONS INC.
CITY OF OWEN SOUND
HIBOU CONSERVATION AREA
OPTION 1

Product(s)
Isometric View

Products:

Playstructure
(J3-19309-5HA)



Capacity: 36 Childrens
18 Months - 12 Years

Posts : 5"
Platform(s): 48"

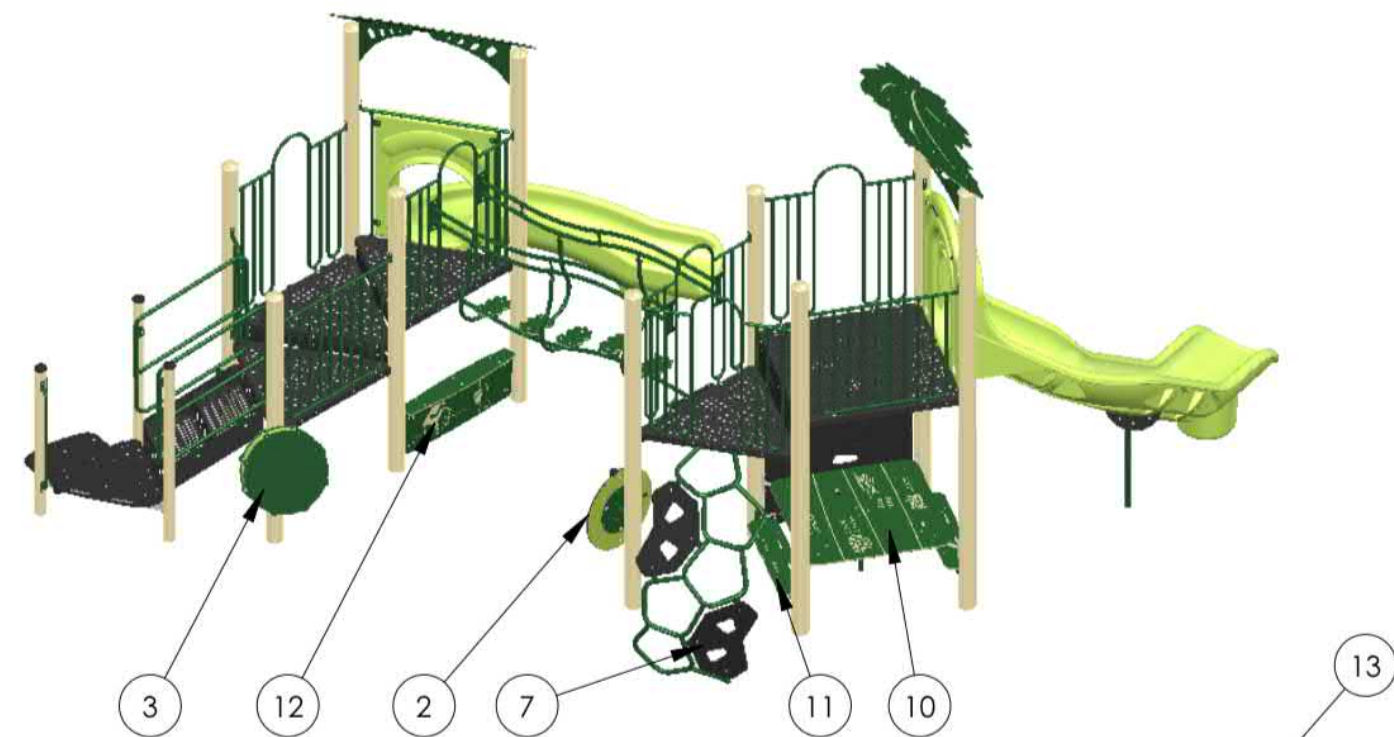
Fall height 110"/2.8m

Drawn by: M.E.L.
Date: 06.03.2020

Hibou Conservation Area

Option 2 - City of Owen Sound





#	- DESCRIPTION -
1	3' Transfer station (44)
2	Rain Stick (5.0 dia.post)
3	Percu-sound (5.0 dia.post)
4	4' Curved Slide
5	6' Modslide (JA) (44)
6	3'-6" Cable net
7	5' Honeycomb Climber
8	6' Bee Climbing Wall (44)
9	Leaf challenge bridge (1' diff.)
10	Safari table (48x48)
11	Classic bench (44)
12	Sugar shack game counter (44)
13	Maple leaf roof (44)



Jambette.COM

700, Des Calfats, Lévis, Qc., G6Y 9E6
(877) 363-2687

Customer:
OPENSOURCE SOLUTIONS INC.
CITY OF OWEN SOUND
HIBOU CONSERVATION AREA
OPTION 2

**Product(s)
Isometric View**

Products:

Playstructure
(J3-20089-5HA)



Capacity: 39 Childrens
18 Months - 12 Years

Posts : 5"
Platform(s): 48"

Fall height 110"/2.8m

Drawn by: AP
Date: 06.03.2020

GREY SAUBLE CONSERVATION



Model No. B503483R0

Posts | Brown
Accents | Tan
Roto-Molded Plastic | Green
HDPE Plastic | Brown-Tan-Brown

© 2017 Henderson Recreation Equipment Limited | All rights reserved.
1-800-265-5462 | Fax 519-426-1132 | www.hendersonplay.com
11 Gilbertson Drive, Simcoe, Ontario, Canada, N3Y4K8
This drawing is not to be reproduced in any way without prior approval from Henderson Recreation.

Components

- | | | | |
|-------------------------------|------------------------------|----------------------------------|-----------------------------------|
| 1 Maze Wheel Mini Panel | Post | 2 Grab Bar | bar) |
| 1 PlayFort Rail Panel | 1 Non-Skid Balcony Deck With | 1 PlayFort Roof | 2 Slash-Proof Belt Seat (8' Top- |
| 1 PlayFort Window Panel | Steering Wheel | 1 Single Slide Plastic Hood | bar) |
| 1 Reactions Buzz Sound Panel | 5 Square Deck | 1 Double Slide Plastic Hood | 1 Inclusive Swing Seat (8' Top- |
| 1 Piano Sound Panel | 1 Triangle Deck | 1 Spiral Slide 6' | bar) |
| 1 Wheelchair Ramp With Guard- | 1 Half Hex Deck | 1 Double Scoop Slide 4' | 1 8' Single Post Swing 1-Bay |
| rails | 1 Post Step Pad | 1 Single Slide 2' | 1 Accessible 8' Single Post Swing |
| 1 Pipe Ladder 5' | 3 "Infill Panel 12"xxxx | 1 Deck Ladder 3' | Extend-A-Bay |
| 1 SpaceWalk 6' | 1 Minor Arc Overhead Ladder | 1 "Accessible Step Up 12"xxxx | |
| 1 Rockwall Climber 5' | 3 Wheelchair Barrier | 8 "3" Swing Bearing" | |
| 1 Single Lava Rock Climber to | 1 Threshold | 1 Slash-Proof Baby Seat (8' Top- | |



HENDERSON IS 100% CANADIAN
OWNED AND OPERATED SINCE 1971

Henderson®
Providing Playground Fun



GREY SAUBLE CONSERVATION



Model No. B503483R0

Posts | Brown
Accents | Tan
Roto-Molded Plastic | Green
HDPE Plastic | Brown-Tan-Brown

© 2017 Henderson Recreation Equipment Limited | All rights reserved.
1-800-265-5462 | Fax 519-426-1132 | www.hendersonplay.com
11 Gilbertson Drive, Simcoe, Ontario, Canada, N3Y4K8
This drawing is not to be reproduced in any way without prior approval from Henderson Recreation.

Components

- | | | | |
|-------------------------------|------------------------------|----------------------------------|-----------------------------------|
| 1 Maze Wheel Mini Panel | Post | 2 Grab Bar | bar) |
| 1 PlayFort Rail Panel | 1 Non-Skid Balcony Deck With | 1 PlayFort Roof | 2 Slash-Proof Belt Seat (8' Top- |
| 1 PlayFort Window Panel | Steering Wheel | 1 Single Slide Plastic Hood | bar) |
| 1 Reactions Buzz Sound Panel | 5 Square Deck | 1 Double Slide Plastic Hood | 1 Inclusive Swing Seat (8' Top- |
| 1 Piano Sound Panel | 1 Triangle Deck | 1 Spiral Slide 6' | bar) |
| 1 Wheelchair Ramp With Guard- | 1 Half Hex Deck | 1 Double Scoop Slide 4' | 1 8' Single Post Swing 1-Bay |
| rails | 1 Post Step Pad | 1 Single Slide 2' | 1 Accessible 8' Single Post Swing |
| 1 Pipe Ladder 5' | 3 "Infill Panel 12"xxxx | 1 Deck Ladder 3' | Extend-A-Bay |
| 1 SpaceWalk 6' | 1 Minor Arc Overhead Ladder | 1 "Accessible Step Up 12"xxxx | |
| 1 Rockwall Climber 5' | 3 Wheelchair Barrier | 8 "3" Swing Bearing" | |
| 1 Single Lava Rock Climber to | 1 Threshold | 1 Slash-Proof Baby Seat (8' Top- | |



HENDERSON IS 100% CANADIAN
OWNED AND OPERATED SINCE 1971

Henderson®
Providing Playground Fun

