

Skinner's Marsh-McNab Lake Management Area – Compartments 110 and 112

Concession 1 NCD West Part Lot 25, Township of Georgian Bluffs (former Keppel Township), Grey County; and

Concession 1 SCD Part Lots 26-28, Concession; 1 NCD Lot 26 Part Lot 27 & 28; Concession 2 NCD Lots 24, 25 Part Lot 26; Concession 13 Part Lots 11, 12, 13, 14 & 15 SKINNER MARSH

Skinner's Marsh-McNab Lake Management Area (Compartments 110 and 112) will be closed starting 14 January 2022 and anticipated to be reopened 31 March 2022 due to a scheduled hardwood stand improvement operation.

All trails are closed on this property for the safety of the public.

The goal of Grey Sauble Conservation Authority's (GSCA) Forest Management Program is to maintain healthy, diverse forest ecosystems which will provide many environmental, ecological, social and cultural benefits. The harvest operation, identified in our Forest Management Plan, will involve removal of trees to improve and maintain the health of the residual forest. The trees to be removed are carefully selected based on their vigour and quality. Wildlife habitat features such as stick nests, cavity trees and mast trees area retained to provide food and shelter for wildlife.

Wood from this harvest will provide lumber, renewable energy, and firewood. Revenues generated by this operation support the conservation efforts of GSCA and the local economy.

The results of this stand improvement operation will be a healthy, diverse ecosystem that provides forest products, valuable wildlife habitat and recreational opportunities for the residents of our watershed.

This operation is consistent with GSCA's mandate to further the conservation, restoration, development and management of natural resources.

For further information about this closure and the stand improvement operation please contact GSC at 519-376-3076, or email us at forestry@greysauble.on.ca.

Member Municipalities

Municipality of Arran-Elderslie, Town of the Blue Mountains, Township of Chatsworth, Township of Georgian Bluffs, Municipality of Grey Highlands, Municipality of Meaford, City of Owen Sound, Town of South Bruce Peninsula

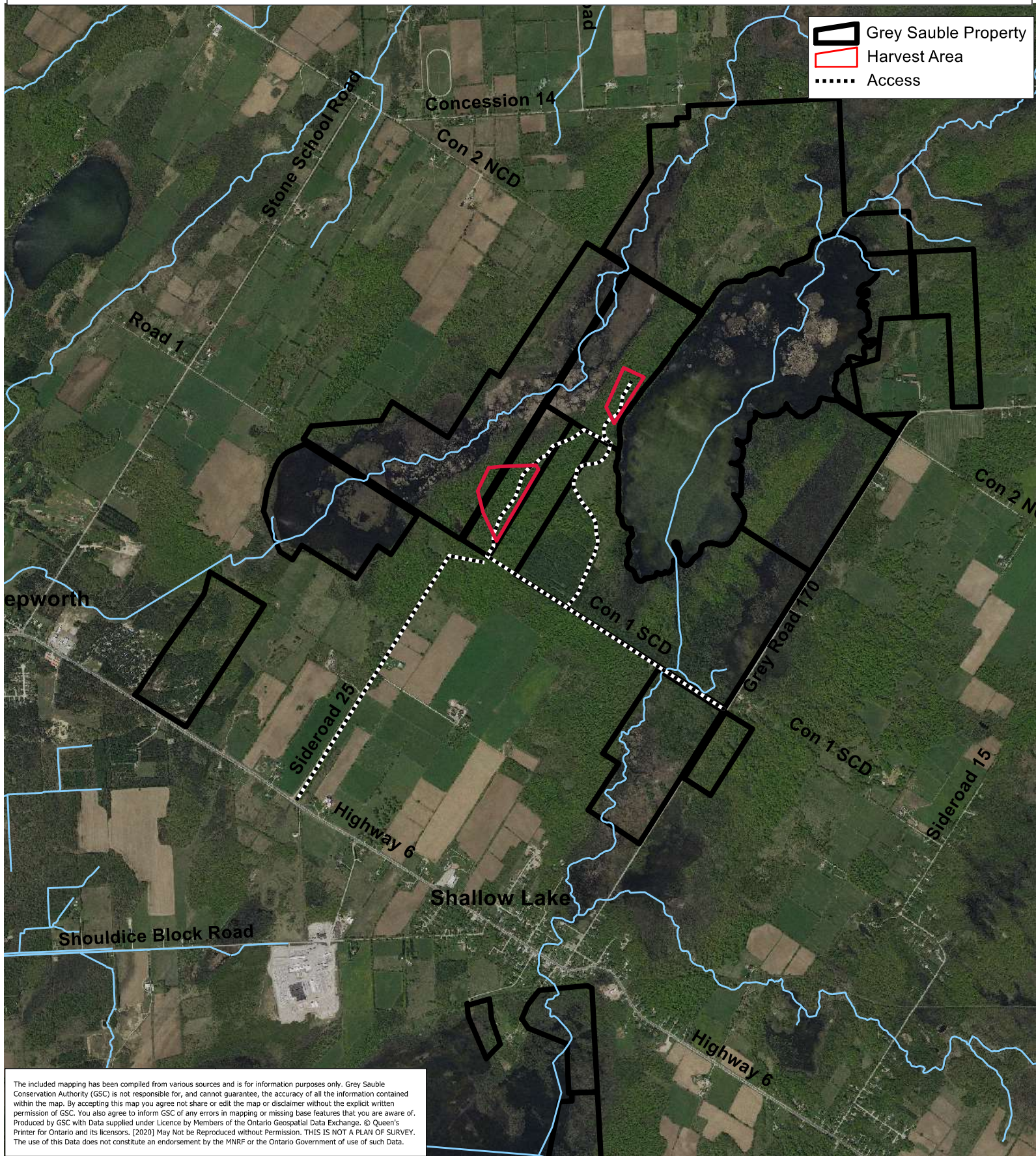
Grey Sauble Conservation Authority

Skinner Marsh -McNab Lake Management Area-Compartment 110 & 112

Part Lots 24 & 25, Concession 1 & 2 NCD

Township of Georgian Bluffs (formerly Keppel Township), Grey County

35 acres



The included mapping has been compiled from various sources and is for information purposes only. Grey Sauble Conservation Authority (GSC) is not responsible for, and cannot guarantee, the accuracy of all the information contained within the map. By accepting this map you agree not share or edit the map or disclaimer without the explicit written permission of GSC. You also agree to inform GSC of any errors in mapping or missing base features that you are aware of. Produced by GSC with Data supplied under Licence by Members of the Ontario Geospatial Data Exchange. © Queen's Printer for Ontario and its licensors. [2020] May Not be Reproduced without Permission. THIS IS NOT A PLAN OF SURVEY. The use of this Data does not constitute an endorsement by the MNR or the Ontario Government of use of such Data.