

Grey Sauble Conservation Authority
R.R. #4, 237897 Inglis Falls Road
Owen Sound, Ontario N4K 5N6 (519) 376-3076; ext. 221
v.coleman@greysauble.on.ca

The next regular meeting of the Grey Sauble Conservation Authority Board of Directors is scheduled for Wednesday, August 24th, 2022, at 1:15 p.m. The regular meeting will occur in a hybrid format, both in person at the GSCA Administrative Centre and via the Webex web-based application. Please notify Valerie Coleman if you are unable to attend.

Directors

Greig, Scott (Chair)
Matrosovs, Andrea (Vice-Chair)
Burley, Dwight
Greenfield, Harley
Greig, Ryan
Koepke, Marion
Little, Cathy
Mackey, Scott
McKenzie, Paul
Moore Coburn, Cathy
Vickers, Paul

Honourary Members

Elwood Moore
Betty Adair

Oosting, Lara, MNRF Peterborough
Allison, Tracy, MNRF Owen Sound
Byers, Rick, MPP Bruce Grey Owen Sound
Ruff, Alex, MP Bruce Grey Owen Sound
Dowdall, Terry, MP Simcoe-Grey
Wilson, Jim, MPP Simcoe-Grey

Member Municipalities

Municipality of Arran-Elderslie, Town of the Blue Mountains, Township of Chatsworth, Township of Georgian Bluffs, Municipality of Grey Highlands, Municipality of Meaford, City of Owen Sound, Town of South Bruce Peninsula

Grey Sauble Conservation Authority
R.R. #4, 237897 Inglis Falls Road
Owen Sound, Ontario N4K 5N6 (519) 376-3076; ext. 221
v.coleman@greysauble.on.ca

The next regular meeting of the Grey Sauble Conservation Authority Board of Directors is scheduled for Wednesday, August 24th, 2022, at 1:15 p.m. The regular meeting will occur in a hybrid format, both in person at the GSCA Administration Centre and via the Webex web-based application. Public viewing of this meeting will be available via a live stream on YouTube at:

https://www.youtube.com/channel/UCy_ie5dXG8aFYDYG8tV9Yg/videos.

Please note that this is a Notice of Meeting only for your information.

The Sun Times
Bayshore Broadcasting
The Meaford Independent
The Bounce
The Wiarton Echo
The Advance
The Post
The Thornbury Paper
The Hub Owen Sound
Blue Mountains Review
South Grey News
Collingwood Today

Member Municipalities

Municipality of Arran-Elderslie, Town of the Blue Mountains, Township of Chatsworth, Township of Georgian Bluffs, Municipality of Grey Highlands, Municipality of Meaford, City of Owen Sound, Town of South Bruce Peninsula

AGENDA

Grey Sauble Conservation Authority
Full Authority Meeting
Wednesday, August 24, 2022, at 1:15 p.m.

1. Call to Order

We acknowledge with respect, the history, spirituality, and culture of the Anishinabek: The People of the Three Fires known as Ojibway, Odawa, and Pottawatomi Nation, who have inhabited this land from time immemorial. And further give thanks to the Chippewa of Saugeen, and the Chippewa of Nawash, now known as the Saugeen Ojibway Nation, as the traditional keepers of this land. We also recognize, the Metis whose ancestors shared this land and these waters. May we all, as Treaty People, live with respect on this land, and live-in peace and friendship with all its diverse peoples.

2. Disclosure of Pecuniary Interest

3. Call for Additional Agenda Items

4. Adoption of the Agenda

5. Approval of Minutes

- i. Full Authority – July 27, 2022 – Resolution – Attachment #1

6. Business Out of Minutes – None at this time.

7. Consent Agenda

- i. Environmental Planning – Section 28 Permits – July 2022 – Attachment #2
- ii. Administration – Receipts & Expenses – July 2022 – Attachment #3
- iii. Correspondence – Petition for Biking at Inglis Falls Conservation Area – Attachment #4
- Hepworth Anglers Club Email – Attachment #5
- iv. Conservation Ontario – Nothing at this time.
- v. Minutes – Nothing at this time.
- vi. Media – Attachment #6

8. Business Items

- i. Administration
 - a. Q2 Budget Update – Information – Attachment #7 (20 min)

- b. Q2 Investment Portfolio Update – Information – Attachment #8 (10 min)
- ii. Water Management – Nothing at this time.
- iii. Environmental Planning – Nothing at this time.
- iv. Operations – Nothing at this time.
- v. Conservation Lands – Nothing at this time.
- vi. Forestry – Nothing at this time.

- a. Invasive Species Strategy – Resolution – Attachment #9 (20 min)

- b. CCIRP Request for Support – Resolution – Attachment #10 (10 min)

- vii. Communication/Public Relations – Nothing at this time.
- viii. Education – Nothing at this time.
- ix. GIS/IT – Nothing at this time.
- x. DWSP/RMO Report – Nothing at this time.

- 9. **New Business** – If required. Two-thirds majority vote required to add any business items.
- 10. **CAO's Report**
- 11. **Chair's Report**
- 12. **Resolution to Move into Closed Session**

“THAT the GSCA Board of Directors now move into ‘Closed Session’ to consider:

- i. Minutes of the Closed Session of the Regular Board of Directors meeting held on July 27, 2022; and,
- ii. To discuss an item related to “a position, plan procedure, criteria or instruction to be applied to any negotiations carried on or to be carried on by or on behalf of the Authority”; and,
- iii. To discuss an item regarding litigation or potential litigation including matters before administrative tribunals (GSCA Administrative By-Law, Section 4(xvii)(1)(d).

- 13. **Resolution that the Board of Director's has Resumed Open Session**
- 14. **Resolution Approving the Closed Session Minutes of June 22, 2022**
- 15. **Reporting out of Closed Session**
- 16. **Adjournment**

AGENDA

Grey Sauble Conservation Authority
Full Authority Meeting
Wednesday, August 24, 2022, at 1:15 p.m.

1. Call to Order

We acknowledge with respect, the history, spirituality, and culture of the Anishinabek: The People of the Three Fires known as Ojibway, Odawa, and Pottawatomi Nation, who have inhabited this land from time immemorial. And further give thanks to the Chippewa of Saugeen, and the Chippewa of Nawash, now known as the Saugeen Ojibway Nation, as the traditional keepers of this land. We also recognize, the Metis whose ancestors shared this land and these waters. May we all, as Treaty People, live with respect on this land, and live-in peace and friendship with all its diverse peoples.

2. Disclosure of Pecuniary Interest

3. Call for Additional Agenda Items

4. Adoption of the Agenda

5. Approval of Minutes

- i. Full Authority – July 27, 2022 – Resolution – Attachment #1

6. Business Out of Minutes – None at this time.

7. Consent Agenda

- i. Environmental Planning – Section 28 Permits – July 2022 – Attachment #2
- ii. Administration – Receipts & Expenses – July 2022 – Attachment #3
- iii. Correspondence – Petition for Biking at Inglis Falls Conservation Area – Attachment #4
- Hepworth Anglers Club Email – Attachment #5
- iv. Conservation Ontario – Nothing at this time.
- v. Minutes – Nothing at this time.
- vi. Media – Attachment #6

8. Business Items

- i. Administration
 - a. Q2 Budget Update – Information – Attachment #7 (20 min)

- b. Q2 Investment Portfolio Update – Information – Attachment #8 (10 min)
- ii. Water Management – Nothing at this time.
- iii. Environmental Planning – Nothing at this time.
- iv. Operations – Nothing at this time.
- v. Conservation Lands – Nothing at this time.
- vi. Forestry – Nothing at this time.

- a. Invasive Species Strategy – Resolution – Attachment #9 (20 min)

- b. CCIRP Request for Support – Resolution – Attachment #10 (10 min)

- vii. Communication/Public Relations – Nothing at this time.
- viii. Education – Nothing at this time.
- ix. GIS/IT – Nothing at this time.
- x. DWSP/RMO Report – Nothing at this time.

- 9. **New Business** – If required. Two-thirds majority vote required to add any business items.
- 10. **CAO's Report**
- 11. **Chair's Report**
- 12. **Resolution to Move into Closed Session**

“THAT the GSCA Board of Directors now move into ‘Closed Session’ to consider:

- i. Minutes of the Closed Session of the Regular Board of Directors meeting held on July 27, 2022; and,
- ii. To discuss an item related to “a position, plan procedure, criteria or instruction to be applied to any negotiations carried on or to be carried on by or on behalf of the Authority”.

- 13. **Resolution that the Board of Director's has Resumed Open Session**
- 14. **Resolution Approving the Closed Session Minutes of June 22, 2022**
- 15. **Reporting out of Closed Session**
- 16. **Adjournment**

Grey Sauble Authority Board of Directors

M O T I O N

DATE: August 24, 2022

MOTION #: FA-22-069

MOVED BY: _____

SECONDED BY: _____

THAT the Grey Sauble Conservation Authority Board of Directors approve the agenda of August 24, 2022.

**GREY SAUBLE CONSERVATION AUTHORITY
MINUTES**

**Full Authority Board of Directors
Wednesday, July 27, 2022, at 1:15 p.m.**

The Grey Sauble Conservation Authority (GSCA) Board of Directors' meeting was held in a hybrid format of in-person at the Grey Sauble Conservation Authority Administrative Office and virtually via the meeting application, WebEx.

1. Call to Order

Chair Scott Greig called the meeting to order at 1:16 p.m., welcomed all those present in person and virtually, and made a land acknowledgement declaration.

Directors Present In-Person: Chair Scott Greig, Dwight Burley, Paul Vickers, Marion Koepke, Scott Mackey, Harley Greenfield, Ryan Greig

Directors Present Virtually: Vice Chair Andrea Matrosovs, Cathy Little, Cathy Moore Coburn, Paul McKenzie

Regrets: None

Staff Present: CAO, Tim Lanthier; Administrative Assistant, Valerie Coleman; Network Administrator, Les McKay; Manager of Information Services, Gloria Dangerfield, Manager of Environmental Planning, Mac Plewes, Water Resources Coordinator, John Bittorf

2. Disclosure of Pecuniary Interest

The Directors were reminded to disclose any pecuniary interest that may arise during the course of the meeting. No disclosures of pecuniary interest were expressed at the time.

3. Call for Additional Agenda Items

Nothing at this time.

4. Adoption of Agenda

**Motion No.:
FA-22-060**

**Moved By: Scott Mackey
Seconded By: Dwight Burley**

**THAT the Grey Sauble Conservation Authority Board of Directors approve the agenda of
July 27, 2022.**

Carried

5. Approval of Minutes

Motion No.:
FA-22-061

Moved By: Marion Koepke
Seconded By: Paul Vickers

THAT the Grey Sauble Conservation Authority Board of Directors approve the Full Authority minutes of June 22, 2022.

Carried

6. Business Out of Minutes

Nothing at this time.

7. Consent Agenda

Motion No.:
FA-22-62

Moved By: Dwight Burley
Seconded By: Andrea Matrosovs

THAT in consideration of the Consent Agenda Items listed on the July 27, 2022, agenda, the Grey Sauble Conservation Authority Board of Directors receives the following items: (i) Environmental Planning – Section 28 Permits – June 2022; (ii) Administration – Receipts & Expenses – June 2022; (iv) Conservation Ontario Council Meeting Minutes June 20, 2022; (vi) Recent Media Articles

Carried

8. Delegation

i. Kate Lazier – Talisman Development

Chair Scott Greig welcomed Dr. Kate Lazier to the meeting and noted that, in accordance with GSCA Administrative By-Laws, Dr. Lazier had ten minutes to speak to the Members of the Board.

Dr. Lazier introduced the Protecting Talisman Lands Association as a coalition of concerned local groups with the aim to preserve lands on the previous Talisman site.

Dr. Lazier led a presentation outlining their concerns of potential future catastrophic flooding on the Beaver River, the affect of development on the previous Talisman Ski Hill lands, and the steps they feel that GSCA should take.

Dr. Lazier noted that the last Floodplain Mapping Report for the area was conducted in 1995 and feels that it is no longer accurate. Concern was raised that the report did not include any climate change modelling.

Dr. Lazier pointed to two specific recommendations made in an independent review of the Ontario flooding events of 2019. One that, the MNRF update floodplain mapping technical and implementation guidelines and two that, the province updates its technical guides pertaining to floods and natural hazards.

Dr. Lazier, on behalf of the coalition, asked for GSCA to conduct a comprehensive floodplain study of the Talisman section of the Beaver River, and put a moratorium on any new development until the flood plain study has been completed.

Chair Greig thanked Dr. Lazier and her colleagues for their presentation.

There was discussion regarding the process that GSCA follows when a development has been proposed, the steps and documentation required to be provided by a developer, and the regulations and standards that GSCA adheres to.

As the area in question includes a dam structure, GSCA's Water Resources Coordinator, John Bittorf, was asked to clarify the communication relationship between GSCA and Ontario Power Generation (OPG). John explained that OPG notifies GSCA staff if there are to be any changes to the flow of the dam.

Chair Greig thanked the group for their presentation.

Member Marion Koepke left the meeting at 1:59 p.m.

9. Business Items

i. Board Orientation

a. GIS and Mapping at GSCA

The Manager of Information Services, Gloria Dangerfield, provided a presentation to the Board on the GIS (Geographic Information Systems) department. Gloria explained what GIS is and how GSCA staff use the information.

The GIS department continues to grow and incorporate new data sources and technology.

Geospatial Technician, Kris Robinson, presented an overview of the projects that staff are working on, including watershed report cards, flood plain mapping, and data collection.

It was expressed that the technology that the GIS department is working on has beneficial impacts for several departments within the GSCA.

A Member asked if the goal was to have all operational staff have the technology with them when in the field.

Gloria responded that it would be the ideal scenario to have all staff trained and equipped when in the field.

Staff invited Members to try some of the tools and educational pieces that the department uses.

The CAO thanked the staff and commended staff on the work that they do in moving the authority and its departments forward.

A Member asked with regard to succession planning for the GIS department staff, taking into consideration the specialized skills, knowledge, and training required.

The CAO replied that staff are working on succession planning across the organization by ensuring that various technical job functions are learned by other existing staff.

ii. Administration

a. GSC Foundation Representative Update

Member Little has tendered her resignation from the GSC Foundation Board of Directors and spoke to her decision to resign from the GSC Foundation Board of Directors.

Chair Greig acknowledged and thanked Member Little for her support of and work with the Foundation over the past years.

Chair Greig expanded on the particulars of the GSC Foundation Board of Directors meetings, projects, and membership.

A Member asked if the terms of reference stipulate the requirement of having 2 members on the Board. The CAO replied that the GSCA Board would be reappointing Members at the 2023 GSCA AGM.

The Board discussed the options and opted to postpone appointing an additional representative until the 2023 GSCA AGM.

Motion No.:
FA-22-063

Moved By: Dwight Burley
Seconded By: Scott Mackey

WHEREAS Member Little has decided to step down as the GSCA appointee to the Grey Sauble Conservation Foundation Board of Directors;

THAT the GSCA Board of Directors postpone the appointment of a Member to the Grey Sauble Conservation Foundation Board of Directors until new appointments are made at the GSCA 2023 AGM

Carried

Member Ryan Greig left the meeting at 2:44 p.m.

b. Board Input on Programs and Services Inventory

The CAO, Tim Lanthier, provided an update on the progress of GSCA's Program and Services Inventory. It was noted that most member municipalities have opted to wait until after the Fall 2022 Municipal election to bring the Programs and Services Inventory to council.

The CAO reviewed the Transparency Requirements that GSCA must meet and noted that many of the individual requirements have been met already.

The CAO reviewed the details around the Agricultural Representative, how they are selected and what restrictions are placed on the position.

A Member asked if there were any updates regarding the filling of this position. The CAO replied that GSCA staff have not heard anything as of the start of the meeting.

The CAO provided an overview of mandatory and non-mandatory programs and services and the details of each category.

A Member asked what percentage of the programs and services that GSCA provides falls within the mandatory class.

The CAO answered that 75% of programs and services costs are within the mandatory category and only 1.7% of programming costs fall within the levy-based category 3 program areas, based on the 2022 budget.

The CAO explained the changes to the budget process and apportionment (levy).

The CAO detailed GSCA's current status regarding the required transition plans, inventories, and MOUs. Through the process of meeting with senior municipal staff regarding the inventory of programs and services, municipal staff identified some programs and services that GSCA does not currently provide but would be welcomed. MOUs are required to be in place by December 31, 2023.

A Member asked if the MOU agreements can be revisited or amended should circumstances or needs change. The CAO replied that agreements are signed for a maximum of five (5) years and that wording would be included to allow for changes.

A Member asked what communication GSCA will have with the counties with regards to programs and services.

Staff have stayed in contact with both counties, however; these agreements would fall outside of the requirement as the counties do not contribute to the levy. Any agreements between the GSCA and counties would be fee for service based.

A Member asked if the inventory is a complex accounting process.

The CAO answered that it is unknown at the time, however; staff have taken steps to align the programs and services inventory with the budget format to provide clarity through the budget discussion process.

Motion No.:
FA-22-064

Moved By:
Seconded By:

Dwight Burley
Paul McKenzie

WHEREAS on October 4, 2021, the Province of Ontario released Ontario Regulation 687/21 – Transition Plans and Agreements for Programs and Services Under Section 21.1.2 of the Act, requiring that conservation authorities develop an Inventory of Programs and Services to guide discussions on cost-apportioning agreements,

AND WHEREAS on January 26, 2022, the GSCA Board of Directors approved GSCA's Inventory of Programs and Services for circulation,

THAT the GSCA Board of Directors receive Staff Report 001-2022, *GSCA Inventory of Programs and Services* as information.

AND THAT the GSCA Board of Directors provide staff with any relevant feedback or direction.

Carried

iii. Water Management
Nothing at this time.

iv. Environmental Planning

Nothing at this time.

v. Operations

Nothing at this time.

vi. Conservation Lands

Nothing at this time.

vii. Forestry

Nothing at this time.

viii. Communications/Public Relations

Nothing at this time.

ix. Education

Nothing at this time.

x. GIS/IT

a. Regulation Mapping Update

The Manager of Information Services, Gloria Dangerfield, gave a brief update on Environmental Planning Regulation Mapping updates. These updates are provided to the Board on an annual basis for information purposes. The Board approved the process for the changes in 2017.

Staff will provide the updates to upper and lower tier municipalities for inclusion in their online mapping platforms. GSCA will also update its online mapping platform to include this information.

xi. DWSP

Nothing at this time.

10. New Business

Nothing at this time.

11. CAO's Report

The CAO, Tim Lanthier, updated the Board on the finalization of the NDMP project between GSCA, The Town of the Blue Mountains, and Grey County to undertake flood assessments. Greenland International Inc will be incorporating the LiDAR data into the project with an estimated final cost to GSCA of approximately \$9,000, to be drawn from reserves.

On June 25th, the CAO presented the Inglis Falls Management Plan to The Sustainability Project AGM at the Inglis Falls Arboretum Pavilion.

The CAO invited Members to attend the August 7th Hibou Family Fun Day. The event is being hosted by the Friends of Hibou and will be free for all attendees. There will be several exhibits,

including Scienstational Sssnakes (sic), a Monarch Butterfly display with Audrey Armstrong, the Junior Optimists Club, and many more. As well the Sydenham and District Optimist Club will be running a fundraising BBQ.

The CAO updated the Board on the progress of the Administration building designs. GSCA staff met with Lebel & Bouliane on June 23rd for an initial meeting and tour of the building. Additionally, the Board's Administration Building Ad Hoc Committee met virtually with Lebel & Bouliane on July 19th to review preliminary design concepts. The committee will be meeting again to discuss these initial designs in preparation for staff responding back to the architects.

On July 13th, the CAO attended the DSWP Region Management Committee meeting. Project Manager, Carl Seider provided a program status update, including new wells at Scott's Point and Chesley, Lake Rosalind WHPA-E, Lake Eugenia water quality, and Source Protection Committee appointments. It was noted that the MOU between GSCA, SVCA, and NBP will need to be updated and renewed. Staff are reviewing now.

The CAO gave a status update on the Planning Fee Review Consultation process. An online survey went live on July 11th. It was sent to all member municipal CAOs and planning staff, both Counties, and the neighbouring CAs. GSCA Planning staff are also sending the survey to planning consultants and developers. Once the consultation process has been completed, staff will bring a report forward to the Board. The CAO estimates this could be in September.

12. Chair's Report

Chair Greig had nothing new to report at this time.

13. Other Business

Nothing at this time.

14. Resolution to Move into Closed Session

Motion No.:
FA-22-065

Moved By: Scott Mackey
Seconded By: Harley Greenfield

THAT the Grey Sauble Conservation Authority Board of Directors proceed into closed session at 3:28 pm to discuss matters related to the following:

- i. Minutes of the Closed Session of the Regular Board of Directors meeting held on June 22, 2022; and,**
- ii. Minutes of the Confidential Closed Session of the Regular Board of Directors meeting held on October 27, 2021; and**
- iii. To discuss a Human Resources item – closed as it relates to personal matters about an identifiable individual including Authority directors or Authority employees (GSCA Administrative By-Law, Section 4(xvii)(b))**

AND FURTHER THAT CAO, Tim Lanthier; Administrative Assistant, Valerie Coleman; and, Gloria Dangerfield, Manager of Information Services will be present.

Carried

15. Resolution that the Board of Director's has Resumed Open Session

Motion No.:
FA-22-066

Moved By: Scott Mackey
Seconded By: Harley Greenfield

THAT the Grey Sauble Conservation Authority Board of Directors resume open session.

Carried

16. Resolution Approving the Closed Session Minutes

Motion No.:
FA-22-067

Moved By: Cathy Little
Seconded By: Dwight Burley

THAT the Grey Sauble Conservation Authority Board of Directors approve the June 22, 2022, Closed Session minutes as presented in the closed session agenda.

Carried

17. Resolution Approving the Confidential Closed Session Minutes

Motion No.:
FA-22-068

Moved By: Harley Greenfield
Seconded By: Andrea Matrosovs

THAT the Grey Sauble Conservation Authority Board of Directors approve the October 27, 2021, Confidential Closed Session minutes as presented in the closed session agenda.

Carried

18. Reporting out of Closed Session

Direction was provided by the Board of Directors to staff.

19. Next Full Authority Meeting

Wednesday August 24th, 2022

20. Adjournment

The meeting was adjourned at 3:45 p.m.

Motion No.:
FA-22-069

Moved By: Dwight Burley
Seconded By: Andrea Matrosovs

THAT this meeting now adjourn.

Carried

Scott Greig, Chair

Valerie Coleman
Administrative Assistant

Grey Sauble Authority Board of Directors

M O T I O N

DATE: August 24, 2022

MOTION #: FA-22-070

MOVED BY: _____

SECONDED BY: _____

THAT the Grey Sauble Conservation Authority Board of Directors approve the Full Authority minutes of July 27, 2022.

Permits Issued from July 1, 2022 to July 31, 2022

Permit #:	Date Applied:	Date Issued:	Lot:	Conc:	Municipality:	Former Municipality:
GS22-186	27-Apr-22	05-Jul-22			Municipality of Meaford	St Vincent Township
Approved works:			New Pond		Project Location:	065240 4 Sideroad
					<input type="checkbox"/> construct	<input checked="" type="checkbox"/> alter watercourse <input type="checkbox"/> shoreline
					<input type="checkbox"/> alter structure	<input type="checkbox"/> alter wetland <input type="checkbox"/> fill
					Reviewed by:	
					Jake Bousfield-Baste	
GS22-187	30-May-22	05-Jul-22	22	PL543	Town of South Bruce Peninsula	Amabel Township
Approved works:			Construction of recreational dwelling with associated grading and septic system installation.		Project Location:	1A Cedar Trail Wiarton
					<input checked="" type="checkbox"/> construct	<input type="checkbox"/> alter watercourse <input type="checkbox"/> shoreline
					<input type="checkbox"/> alter structure	<input type="checkbox"/> alter wetland <input type="checkbox"/> fill
					Reviewed by:	
					Chris Scholz	
GS22-245	14-Jun-22	05-Jul-22			Municipality of Grey Highlands	Euphrasia Township
Approved works:			Residential dwelling and associated site alterations		Project Location:	127 Windy Lane Drive
					<input checked="" type="checkbox"/> construct	<input type="checkbox"/> alter watercourse <input type="checkbox"/> shoreline
					<input type="checkbox"/> alter structure	<input type="checkbox"/> alter wetland <input checked="" type="checkbox"/> fill
					Reviewed by:	
					Jake Bousfield-Baste	
GS22-246	01-Jun-22	05-Jul-22			Municipality of Meaford	St Vincent Township
Approved works:			Partial demolition of existing dwelling and new addition		Project Location:	194 Lakeshore Road South
					<input checked="" type="checkbox"/> construct	<input type="checkbox"/> alter watercourse <input type="checkbox"/> shoreline
					<input checked="" type="checkbox"/> alter structure	<input type="checkbox"/> alter wetland <input type="checkbox"/> fill
					Reviewed by:	
					Jake Bousfield-Baste	
GS22-260	03-Jul-22	05-Jul-22			Township of Georgian Bluffs	Derby Township
Approved works:			Lowering existing culverts by 8 inches to improve drainage and convey water from ponding area at inlet. Additionally, regrading around the culverts to match contour of land.		Project Location:	217866 Concession 3
					<input type="checkbox"/> construct	<input checked="" type="checkbox"/> alter watercourse <input type="checkbox"/> shoreline
					<input type="checkbox"/> alter structure	<input type="checkbox"/> alter wetland <input checked="" type="checkbox"/> fill
					Reviewed by:	
					Chris Scholz	
GS22-261	30-Jun-22	06-Jul-22			Municipality of Grey Highlands	Artemesia Township
Approved works:			Culvert replacement		Project Location:	Wilcox Road 750m North of Durham Rd B
					<input type="checkbox"/> construct	<input checked="" type="checkbox"/> alter watercourse <input type="checkbox"/> shoreline
					<input type="checkbox"/> alter structure	<input type="checkbox"/> alter wetland <input type="checkbox"/> fill
					Reviewed by:	
					John Bittorf	

Permit #:	Date Applied:	Date Issued:	Lot:	Conc:	Municipality:	Former Municipality:
GS22-084	17-Mar-22	06-Jul-22	6/7	11	Town of the Blue Mountains	Collingwood Township
Approved works:			replacement of existing crossings with clear span precast open bottom bridges		Project Location: Structure 2 and 3, 6th sidroad <input type="checkbox"/> construct <input checked="" type="checkbox"/> alter watercourse <input type="checkbox"/> shoreline <input type="checkbox"/> alter structure <input type="checkbox"/> alter wetland <input checked="" type="checkbox"/> fill Reviewed by: John Bittorf	
GS22-172	30-May-22	07-Jul-22			Town of South Bruce Peninsula	Amabel Township
Approved works:			Demolition of existing 1-storey dwelling, construction of a 2-storey dwelling, and installation of a septic system.		Project Location: 325 Shoreline Ave <input checked="" type="checkbox"/> construct <input type="checkbox"/> alter watercourse <input type="checkbox"/> shoreline <input type="checkbox"/> alter structure <input type="checkbox"/> alter wetland <input checked="" type="checkbox"/> fill Reviewed by: Chris Scholz	
GS22-231	21-Jun-22	07-Jul-22	26-29	D	Town of South Bruce Peninsula	Amabel Township
Approved works:			Removal of sand within 5 existing emergency access locations		Project Location: Lakeshore Blvd North <input type="checkbox"/> construct <input type="checkbox"/> alter watercourse <input checked="" type="checkbox"/> shoreline <input type="checkbox"/> alter structure <input type="checkbox"/> alter wetland <input checked="" type="checkbox"/> fill Reviewed by: Mac Plewes	
GS22-146	01-May-22	08-Jul-22	Pt Lots 1	2 SWTSR	Township of Chatsworth	Holland Township
Approved works:			Single Family Dwelling/Cottage		Project Location: 166 Countryside Drive, Chatsworth <input checked="" type="checkbox"/> construct <input type="checkbox"/> alter watercourse <input type="checkbox"/> shoreline <input type="checkbox"/> alter structure <input type="checkbox"/> alter wetland <input checked="" type="checkbox"/> fill Reviewed by: Chris Scholz	
GS22-137	15-Apr-22	11-Jul-22			Town of South Bruce Peninsula	Albemarle Township
Approved works:			Construction of a deck extension.		Project Location: 2-11th Avenue <input checked="" type="checkbox"/> construct <input type="checkbox"/> alter watercourse <input type="checkbox"/> shoreline <input type="checkbox"/> alter structure <input type="checkbox"/> alter wetland <input type="checkbox"/> fill Reviewed by: Chris Scholz	
GS22-225	02-Jun-22	11-Jul-22			Municipality of Meaford	St Vincent Township
Approved works:			Second level open deck		Project Location: 153 Lakeshore Road S. <input checked="" type="checkbox"/> construct <input type="checkbox"/> alter watercourse <input type="checkbox"/> shoreline <input type="checkbox"/> alter structure <input type="checkbox"/> alter wetland <input type="checkbox"/> fill Reviewed by: Nicole McArthur	
GS22-262	30-Jun-22	12-Jul-22			Municipality of Grey Highlands	Artemesia Township
Approved works:			Replace 2 culverts		Project Location: Lower Valley Rd (1078m and 1488m North of East Back Li <input type="checkbox"/> construct <input checked="" type="checkbox"/> alter watercourse <input type="checkbox"/> shoreline <input type="checkbox"/> alter structure <input type="checkbox"/> alter wetland <input type="checkbox"/> fill Reviewed by: John Bittorf	

Permit #:	Date Applied:	Date Issued:	Lot:	Conc:	Municipality:	Former Municipality:
GS22-144	01-May-22	12-Jul-22	25	5	Town of South Bruce Peninsula	Albemarle Township
Approved works:		Construction of residential dwelling and installation of a septic system			Project Location: 64 Ice Hut Lane <input checked="" type="checkbox"/> construct <input type="checkbox"/> alter watercourse <input type="checkbox"/> shoreline <input type="checkbox"/> alter structure <input type="checkbox"/> alter wetland <input checked="" type="checkbox"/> fill Reviewed by: Chris Scholz	
GS22-208	11-May-22	13-Jul-22			Town of the Blue Mountains	Collingwood Township
Approved works:		Residential dwelling and associated site alterations			Project Location: 118 Main Street, Heathcote <input checked="" type="checkbox"/> construct <input type="checkbox"/> alter watercourse <input type="checkbox"/> shoreline <input type="checkbox"/> alter structure <input type="checkbox"/> alter wetland <input checked="" type="checkbox"/> fill Reviewed by: Jake Bousfield-Baste	
GS22-224	26-May-22	13-Jul-22			City of Owen Sound	City of Owen Sound
Approved works:		Clean out of existing drainage channel			Project Location: 2860 6th Avenue West <input type="checkbox"/> construct <input type="checkbox"/> alter watercourse <input type="checkbox"/> shoreline <input type="checkbox"/> alter structure <input type="checkbox"/> alter wetland <input checked="" type="checkbox"/> fill Reviewed by: Jake Bousfield-Baste	
GS21-016	08-Jan-21	14-Jul-22	26	6	Town of the Blue Mountains	Collingwood Township
Approved works:		Construction of a new dwelling and associated site alterations			Project Location: 121 Barton Blvd. <input checked="" type="checkbox"/> construct <input type="checkbox"/> alter watercourse <input type="checkbox"/> shoreline <input type="checkbox"/> alter structure <input type="checkbox"/> alter wetland <input checked="" type="checkbox"/> fill Reviewed by: Jake Bousfield-Baste	
GS22-178	26-May-22	15-Jul-22	4		Township of Chatsworth	Holland Township
Approved works:		Remove existing timber wall and replace with 24" tall armourstone wall which will alter the height at the shoreline.			Project Location: 154 Woodland Circle <input type="checkbox"/> construct <input type="checkbox"/> alter watercourse <input checked="" type="checkbox"/> shoreline <input type="checkbox"/> alter structure <input type="checkbox"/> alter wetland <input checked="" type="checkbox"/> fill Reviewed by: Chris Scholz	
GS22-243	14-Jun-22	19-Jul-22	23	12	Town of the Blue Mountains	Collingwood Township
Approved works:		Screened porch addition			Project Location: 124 Main St. Heathcote NOH 1N0 <input checked="" type="checkbox"/> construct <input type="checkbox"/> alter watercourse <input type="checkbox"/> shoreline <input type="checkbox"/> alter structure <input type="checkbox"/> alter wetland <input type="checkbox"/> fill Reviewed by: Jake Bousfield-Baste	
GS22-002	04-Jan-22	19-Jul-22			Municipality of Grey Highlands	Euphrasia Township
Approved works:		Reconstruction of Residence			Project Location: 165 Purdy Street, Flesherton <input checked="" type="checkbox"/> construct <input type="checkbox"/> alter watercourse <input type="checkbox"/> shoreline <input type="checkbox"/> alter structure <input type="checkbox"/> alter wetland <input type="checkbox"/> fill Reviewed by: Jake Bousfield-Baste	

Permit #:	Date Applied:	Date Issued:	Lot:	Conc:	Municipality:	Former Municipality:
GS22-136	17-Mar-22	19-Jul-22			Town of the Blue Mountains	Collingwood Township
Approved works:		Residential dwelling, septic, pool, revetment improvements and associated site alterations		Project Location: 209329 highway 26, Blue Mountains, ON <input checked="" type="checkbox"/> construct <input type="checkbox"/> alter watercourse <input checked="" type="checkbox"/> shoreline Reviewed by: <input type="checkbox"/> alter structure <input type="checkbox"/> alter wetland <input type="checkbox"/> fill Jake Bousfield-Baste		
GS22-278	16-Jun-22	19-Jul-22			Township of Georgian Bluffs	Keppel Township
Approved works:		Installation of a septic system		Project Location: 502493 Grey Road 1 <input checked="" type="checkbox"/> construct <input type="checkbox"/> alter watercourse <input type="checkbox"/> shoreline Reviewed by: <input type="checkbox"/> alter structure <input type="checkbox"/> alter wetland <input type="checkbox"/> fill Olivia Sroka		
GS22-279	17-Jun-22	19-Jul-22			Town of South Bruce Peninsula	Amabel Township
Approved works:		Cleanout of Fenton Municipal Drain to roiginal grades		Project Location: Fenton Municipal Drain <input type="checkbox"/> construct <input checked="" type="checkbox"/> alter watercourse <input type="checkbox"/> shoreline Reviewed by: <input type="checkbox"/> alter structure <input type="checkbox"/> alter wetland <input type="checkbox"/> fill Olivia Sroka		
GS22-286	13-Jul-22	19-Jul-22			Town of South Bruce Peninsula	Amabel Township
Approved works:		Replacement of existing shed within the same footprint		Project Location: 30 Community Centre Dr <input checked="" type="checkbox"/> construct <input type="checkbox"/> alter watercourse <input type="checkbox"/> shoreline Reviewed by: <input type="checkbox"/> alter structure <input type="checkbox"/> alter wetland <input type="checkbox"/> fill Chris Scholz		
GS22-287	21-Jun-22	19-Jul-22			Town of the Blue Mountains	Thornbury
Approved works:		fishway culvert on existing dam structure		Project Location: Little Beaver River/Georgian Trail bridge <input type="checkbox"/> construct <input checked="" type="checkbox"/> alter watercourse <input type="checkbox"/> shoreline Reviewed by: <input type="checkbox"/> alter structure <input type="checkbox"/> alter wetland <input type="checkbox"/> fill John Bittorf		
GS22-288	19-Jul-22	19-Jul-22			Township of Chatsworth	Holland Township
Approved works:		Construction of a detached garage		Project Location: 5566651 Strathhaven Rd <input checked="" type="checkbox"/> construct <input type="checkbox"/> alter watercourse <input type="checkbox"/> shoreline Reviewed by: <input type="checkbox"/> alter structure <input type="checkbox"/> alter wetland <input type="checkbox"/> fill Olivia Sroka		
GS22-254	13-Jun-22	20-Jul-22	22		Township of Georgian Bluffs	Keppel Township
Approved works:		Fill and grading associated with septic system installation		Project Location: 502493 Grey Road 1 <input type="checkbox"/> construct <input type="checkbox"/> alter watercourse <input type="checkbox"/> shoreline Reviewed by: <input type="checkbox"/> alter structure <input type="checkbox"/> alter wetland <input checked="" type="checkbox"/> fill Chris Scholz		

Permit #:	Date Applied:	Date Issued:	Lot:	Conc:	Municipality:	Former Municipality:
GS22-249	15-Jun-22	20-Jul-22			Township of Georgian Bluffs	Keppel Township
Approved works:		Watercourse crossing at a stream channel less than 3 meters (9.8 feet) wide at the east side of subject property.			Project Location: 442173 Concession Rd 21 <input type="checkbox"/> construct <input checked="" type="checkbox"/> alter watercourse <input type="checkbox"/> shoreline Reviewed by: <input type="checkbox"/> alter structure <input type="checkbox"/> alter wetland <input type="checkbox"/> fill Chris Scholz	
GS22-218	24-May-22	21-Jul-22		7	Town of the Blue Mountains	Collingwood Township
Approved works:		Residential dwelling and associated site alterations			Project Location: Goldie Court <input checked="" type="checkbox"/> construct <input type="checkbox"/> alter watercourse <input type="checkbox"/> shoreline Reviewed by: <input type="checkbox"/> alter structure <input type="checkbox"/> alter wetland <input checked="" type="checkbox"/> fill Jake Bousfield-Baste	
GS22-219	01-Jun-22	21-Jul-22			Town of the Blue Mountains	Collingwood Township
Approved works:		Residential dwelling and associated site alterations			Project Location: Goldie Court <input checked="" type="checkbox"/> construct <input type="checkbox"/> alter watercourse <input type="checkbox"/> shoreline Reviewed by: <input type="checkbox"/> alter structure <input type="checkbox"/> alter wetland <input checked="" type="checkbox"/> fill Jake Bousfield-Baste	
GS22-220	01-Jun-22	21-Jul-22			Town of the Blue Mountains	Collingwood Township
Approved works:		Residential dwelling and associated site alterations			Project Location: Goldie Court <input checked="" type="checkbox"/> construct <input type="checkbox"/> alter watercourse <input type="checkbox"/> shoreline Reviewed by: <input type="checkbox"/> alter structure <input type="checkbox"/> alter wetland <input checked="" type="checkbox"/> fill Jake Bousfield-Baste	
GS22-221	01-Jun-22	21-Jul-22			Town of the Blue Mountains	Collingwood Township
Approved works:		Residential dwelling and associated site alterations			Project Location: Goldie Court <input checked="" type="checkbox"/> construct <input type="checkbox"/> alter watercourse <input type="checkbox"/> shoreline Reviewed by: <input type="checkbox"/> alter structure <input type="checkbox"/> alter wetland <input checked="" type="checkbox"/> fill Jake Bousfield-Baste	
GS22-222	01-Jun-22	21-Jul-22			Town of the Blue Mountains	Collingwood Township
Approved works:		Residential dwelling and associated site alterations			Project Location: Goldie Court <input checked="" type="checkbox"/> construct <input type="checkbox"/> alter watercourse <input type="checkbox"/> shoreline Reviewed by: <input type="checkbox"/> alter structure <input type="checkbox"/> alter wetland <input checked="" type="checkbox"/> fill Jake Bousfield-Baste	
GS22-282	01-Jun-22	21-Jul-22			Town of the Blue Mountains	Collingwood Township
Approved works:		Site grading associated with new dwelling			Project Location: Goldie Court <input type="checkbox"/> construct <input type="checkbox"/> alter watercourse <input type="checkbox"/> shoreline Reviewed by: <input type="checkbox"/> alter structure <input type="checkbox"/> alter wetland <input checked="" type="checkbox"/> fill Jake Bousfield-Baste	

Permit #:	Date Applied:	Date Issued:	Lot:	Conc:	Municipality:	Former Municipality:
GS22-283	01-Jun-22	21-Jul-22			Town of the Blue Mountains	Collingwood Township
Approved works:			Site grading associated with new dwelling		Project Location: Goldie Court <input type="checkbox"/> construct <input type="checkbox"/> alter watercourse <input type="checkbox"/> shoreline Reviewed by: <input type="checkbox"/> alter structure <input type="checkbox"/> alter wetland <input checked="" type="checkbox"/> fill Jake Bousfield-Baste	
GS22-284	01-Jun-22	21-Jul-22			Town of the Blue Mountains	Collingwood Township
Approved works:			Site grading associated with new dwelling		Project Location: Goldie Court <input type="checkbox"/> construct <input type="checkbox"/> alter watercourse <input type="checkbox"/> shoreline Reviewed by: <input type="checkbox"/> alter structure <input type="checkbox"/> alter wetland <input checked="" type="checkbox"/> fill Jake Bousfield-Baste	
GS22-285	01-Jun-22	21-Jul-22			Town of the Blue Mountains	Collingwood Township
Approved works:			Site grading associated with new dwelling		Project Location: Goldie Court <input type="checkbox"/> construct <input type="checkbox"/> alter watercourse <input type="checkbox"/> shoreline Reviewed by: <input type="checkbox"/> alter structure <input type="checkbox"/> alter wetland <input checked="" type="checkbox"/> fill Jake Bousfield-Baste	
GS22-253	23-Jun-22	24-Jul-22	PT LT 141	CON 3 NETSR A	Municipality of Grey Highlands	Euphrasia Township
Approved works:			Construction of three new bridges for recreational trails		Project Location: Lower Valley Road <input checked="" type="checkbox"/> construct <input type="checkbox"/> alter watercourse <input type="checkbox"/> shoreline Reviewed by: <input type="checkbox"/> alter structure <input type="checkbox"/> alter wetland <input type="checkbox"/> fill Jake Bousfield-Baste	
GS22-240	08-Jun-22	26-Jul-22	158	Chamonix Cres	Town of the Blue Mountains	Collingwood Township
Approved works:			New front and rear deck		Project Location: 158 Chamonix Cres <input checked="" type="checkbox"/> construct <input type="checkbox"/> alter watercourse <input type="checkbox"/> shoreline Reviewed by: <input type="checkbox"/> alter structure <input type="checkbox"/> alter wetland <input type="checkbox"/> fill Jake Bousfield-Baste	
GS22-210	16-May-22	26-Jul-22			Municipality of Meaford	St Vincent Township
Approved works:			Demolition of existing dwelling, construction of new dwelling, septic upgrade and associated site alterations		Project Location: 123 Fraser St <input checked="" type="checkbox"/> construct <input type="checkbox"/> alter watercourse <input type="checkbox"/> shoreline Reviewed by: <input type="checkbox"/> alter structure <input type="checkbox"/> alter wetland <input type="checkbox"/> fill Jake Bousfield-Baste	
GS22-150	05-May-22	26-Jul-22			Town of South Bruce Peninsula	Amabel Township
Approved works:			Construction of recreational dwelling		Project Location: 1254 Sauble Falls Road <input checked="" type="checkbox"/> construct <input type="checkbox"/> alter watercourse <input type="checkbox"/> shoreline Reviewed by: <input type="checkbox"/> alter structure <input type="checkbox"/> alter wetland <input checked="" type="checkbox"/> fill Chris Scholz	

Permit #:	Date Applied:	Date Issued:	Lot:	Conc:	Municipality:	Former Municipality:
GS22-293	23-Jun-22	26-Jul-22			Town of the Blue Mountains	Collingwood Township
Approved works:		New in ground pool and associated site alterations		Project Location: 110 Blueski George Crescent <input checked="" type="checkbox"/> construct <input type="checkbox"/> alter watercourse <input type="checkbox"/> shoreline Reviewed by: <input type="checkbox"/> alter structure <input type="checkbox"/> alter wetland <input checked="" type="checkbox"/> fill Jake Bousfield-Baste		
GS22-297	09-Mar-22	26-Jul-22	Ept lot 12	Conc. 8	Municipality of Grey Highlands	Euphrasia Township
Approved works:		Fill placement for new driveway		Project Location: 605676 Sideroad 13A <input type="checkbox"/> construct <input type="checkbox"/> alter watercourse <input type="checkbox"/> shoreline Reviewed by: <input type="checkbox"/> alter structure <input type="checkbox"/> alter wetland <input checked="" type="checkbox"/> fill		
GS22-217	24-May-22	27-Jul-22	24	11	Municipality of Grey Highlands	Artemesia Township
Approved works:		Addition to existing dwelling, new deck and relocation of septic system		Project Location: 174359 Lower Valley Road <input checked="" type="checkbox"/> construct <input type="checkbox"/> alter watercourse <input type="checkbox"/> shoreline Reviewed by: <input type="checkbox"/> alter structure <input type="checkbox"/> alter wetland <input type="checkbox"/> fill Jake Bousfield-Baste		
GS22-235	15-Jun-22	27-Jul-22	74		Township of Georgian Bluffs	Sarawak Township
Approved works:		Addition/Renovation of existing home and grading associated with a second driveway entering on 24th Street.		Project Location: 222 Carney Street <input checked="" type="checkbox"/> construct <input type="checkbox"/> alter watercourse <input type="checkbox"/> shoreline Reviewed by: <input type="checkbox"/> alter structure <input type="checkbox"/> alter wetland <input checked="" type="checkbox"/> fill Chris Scholz		
GS22-264	04-Jul-22	27-Jul-22		1 NCD	Township of Georgian Bluffs	Keppel Township
Approved works:		Construction of a carport		Project Location: 758275 Girl Guide Road RR#5 <input checked="" type="checkbox"/> construct <input type="checkbox"/> alter watercourse <input type="checkbox"/> shoreline Reviewed by: <input type="checkbox"/> alter structure <input type="checkbox"/> alter wetland <input checked="" type="checkbox"/> fill Chris Scholz		
GS22-276	10-May-22	28-Jul-22			Municipality of Meaford	Sydenham Township
Approved works:		Repairs to existing shoreline revetment		Project Location: 110 Rainbow Beach Road <input type="checkbox"/> construct <input type="checkbox"/> alter watercourse <input checked="" type="checkbox"/> shoreline Reviewed by: <input type="checkbox"/> alter structure <input type="checkbox"/> alter wetland <input type="checkbox"/> fill Jake Bousfield-Baste		

**Grey Sauble Conservation Authority
Receipt Report
July 1st - 31st, 2022**

Regulation Permits	\$	14,910.00	
Planning	\$	13,300.00	
Pavillion Rentals	\$	1,412.50	
Season Passes (via Amilia)	\$	80.00	
Square Parking Revenue	\$	88,280.00	
Forestry	\$	46,860.48	
Day Camp	-\$	95.00	Refunds Issued for Cancellation
Enbridge Grant	\$	2,000.00	Education Program
WECI	\$	2,325.00	
Donations	\$	69.78	
Arboretum Alliance	\$	185.00	
Oliphant Phragmites	\$	2,250.00	
BRWI	\$	2,500.00	
Miscellaneous Revenue	\$	20.34	

Total Monthly Receipts	\$	174,098.10
-------------------------------	-----------	-------------------

Grey Sauble Conservation Authority
Expense Report
July 1st to 31st, 2022

11874	Bell Canada	\$	80.30	Tara Stream Gauge Service
11875	Directdial	\$	1,296.11	Laser Printer
11876	Dwayne McComb	\$	3,000.00	Stewardship Project
11877	Georgian Bay Chemical	\$	152.27	Shop Supplies
11878	Harold Sutherland Construction Ltd.	\$	136.73	Crushed Gravel
11879	Inline Fencing	\$	6,135.90	Stewardship Project
11880	Kilsyth Auto Service Ltd.	\$	107.93	Vehicle Repair and Maintenance
11881	MacDonnell Fuels Limited	\$	5,474.97	Vehicle Fuel
11882	Miller Waste Systems Inc.	\$	85.50	Garbage Bin Rental
11883	Rogers Wireless	\$	205.67	Cell Phone Usage
11884	Sprucedale Agromart Limited	\$	102.91	Vegetation Control
11885	St John Ambulance - Grey Bruce Hur	\$	155.00	Staff Training
11886	Town of South Bruce Peninsula	\$	3,120.04	Property Tax
11887	Xerox Canada Ltd.	\$	159.40	Copy and Print Charges
11888	Ron Hopper Real Estate Ltd.	\$	2,260.00	Property Appraisal
11889	Excel Business Systems	\$	187.78	Print Charges
11890	Bell Canada	\$	197.32	Monthly Phone Service
11891	Township of Chatsworth	\$	1,430.55	Property Tax
11892	Staples Advantage	\$	485.75	Office Supplies
11893	Directdial	\$	2,406.90	Workstations and Peripherals
11894	Georgian Bay Chemical	\$	305.99	COVID-19 Supplies
11895	Robert's Farm Equipment	\$	37.87	Equipment Repair
11896	Township of Georgian Bluffs	\$	82.80	Indian Falls Water Charges
11897	Harold Sutherland Construction Ltd.	\$	199.20	Crushed Gravel
11898	Kilsyth Auto Service Ltd.	\$	1,541.03	Vehicle Repair and Maintenance
11899	MacDonnell Fuels Limited	\$	4,778.35	Equipment and Vehicle Fuel
11900	North Huron Publishing Company Inc.	\$	438.44	Stewardship Advertisement
11901	Miller Waste Systems Inc.	\$	331.44	Tipping Fees and Garbage Rental
11902	RAM Imaging Products Inc.	\$	313.01	Plotter Adhesive Paper
11903	Riddell Contracting Ltd.	\$	220.71	Cooler Service
11904	Rogers Wireless	\$	215.96	Cell Phone Usage
11905	The European Bakery Cafe	\$	239.73	Refreshments
11906	Built by Barron	\$	293.80	Day Camp Supplies
11907	The University of Guelph	\$	476.00	Day Camp Supplies
11908	Paul Sutter	\$	290.00	Permit Fee Refund
11909	Andrea Matrosovs	\$	150.00	Day Camp Supplies

Mastercard Payments	\$ 13,740.32	See Summary Below
Amilia	\$ 1,037.15	
HST Return	\$ 1,593.49	
Pickfield Law Professional Corp.	\$ 1,017.00	Planning Legal Fees
Bruce Telecom	\$ 526.09	
DWSP Copier Lease	\$ 163.85	
Office Moneris Fees	\$ 61.98	
Self-Serve Moneris Fees	\$ 35.60	
Square Fees	\$ 2,870.07	
Hydro, Reliance	\$ 1,995.29	
Receiver General, EHT, WSIB	\$ 80,781.09	
Group Health Benefits	\$ 10,996.71	
OMERS	\$ 37,793.26	
SPC Per Diems	\$ 875.00	
BOD Per Diems	\$ 776.12	
Monthly Payroll	\$ 130,822.66	

Total Monthly Expenses	\$ 322,181.03
-------------------------------	----------------------

Mastercard Summary

Building Services	\$ 1,636.85	
Fleet and Equipment	\$ 444.45	
Planning	\$ 35.82	
IT Supplies	\$ 1,446.00	
Building Equipment	\$ 3,516.52	Meeting Owl, Laptop, Air Purifiers
Watershed Management	\$ 2,300.61	Lab Fees
Flood Forecasting	\$ 285.00	
Shop Supplies	\$ 323.65	
Education/Communications	\$ 1,993.57	Summer Camp Supplies
Office Supplies	\$ 109.38	
Friends of Hibou	\$ 960.50	
Due From County of Grey	\$ 687.97	
Monthly Mastercard Payments	\$ 13,740.32	

Aug. 2022

Letter of Petition to Educate About Acceptable Trail Use at Inglis Falls

To: Scott Greig
Chair of GSCA Board of Directors

From: Fred Zottl
NCCP High Performance Cycling Coach and Coach Developer, PMBIA Instructor
283 6TH Ave. West,
Owen Sound, ON

Background

For over 25 years, together with many members of the community and cyclists from other parts of the country, I have been cycling the trails at Inglis Falls Conservation Area because of the variety of terrain and proximity to Owen Sound. Recently, however, on my way to the rail trail through the Inglis Falls parking lot, I was told by an employee of the GSCA that cycling was not allowed on the trails and hasn't been for years. This came as a shock to me because there have never been any signs to suggest that was the case and it was at Inglis Falls where I spent a lot of time developing off-road cycling skills as a beginner.

I asked about why the trails would be closed to cyclists and the GSCA employee, who wouldn't provide me his name, cited trail erosion and scaring walkers as reasons. Both these reasons are inadequate and scientifically wrong.

Evidence

Many studies have been done on trail erosion by mountain bike use and hiking use that provide scientific evidence that there is no significant difference on erosion. Mountain biking creates no more erosion than hiking. For example, at the Boyne Valley Provincial Park, Ontario a study compared the effects of experimentally applied mountain biking and hiking on the understory vegetation and soil of a deciduous forest. The conclusion was, "Mountain bikes and hikers have no significant difference in vegetation and soil disturbance in this instance." I would argue that because the hiker use is significantly greater than Mountain bike use, on all the trails in the Owen Sound area, hiking causes much more damage to the trails, especially in wet or less mountain bike friendly conditions.

As far as scaring hikers or walkers, any runner on the trail or running dog(s) might do the same. There are no restrictions for runners or dogs on long leashes on the trail. Inconsiderate people can scare walkers whether on a bike, running or with uncontrolled dogs, therefore, to use this as a reason to close the trails to cyclists only is ridiculous.

Moving Forward

Most parks or trail systems advocate education over closure by effective use of signage and social media clearly indicating expectations for all trail users. This is precisely what this petition is aimed at achieving.

Mountain biking is allowed on a total of 120 trails or 1,485km in Canada's National Parks. In the United States, mountain biking is successfully managed in 44 national parks and more superintendents are considering places appropriate for mountain biking.

Bicyclists spend money on food, lodging and often don't take up a parking space. Adding mountain biking as a park amenity builds on the activities offered by the park and lengthens visitors stays, building gateway community economies. Local retailers rely on having access to trails for bicycle sales, service and rentals. As taxpayers, we deserve to have sensible use of facilities we pay for maintenance on.

Cont'd

Aug. 2022

As anyone reading this is likely aware, trail erosion can largely be managed through appropriate design and construction. Trail erosion is largely the same between hikers, trail runners, and mountain bikers. Educating trail users about damage or erosion and shared use would go a long way in reducing the amount of required maintenance and associated costs, as well as make everyone's use of the trail a more pleasant one. Closing the trails only to mountain bikers seems ill-informed at best and punitive at worst.

The following is a list of interested parties sharing this petition to advocate for education instead of trail closure.

Name	Title/Business	Signature
B. Travis	Forks Bicycle Shop	B. Travis
L. Barnes	Bikeface Cycling	L. Barnes
Michael Elder	Bike face Cycling	Michael Elder
Patrick Jones	Bikeface Cycling	Patrick Jones
Ryan Tailor	cyclist	Ryan Tailor
Brandon Bragg	Scenic Cycle	Brandon Bragg
Seany Savage	Sport Club	Seany Savage
Richard Marley	CTC Owen Sound	Richard Marley
Brett Martin	Martin's Bicycle Shop	Brett Martin
John Brown	Owen Sound Cycling Club	John Brown
TREVOR STOKES	— " —	TREVOR STOKES
IAN MULLEN	MULLEN (Hill Climber)	IAN MULLEN
JIM PORTER	NS GMAF	JIM PORTER
Joanne Barber	OSCC ex.	Joanne Barber
Brian Low	OSCC	Brian Low
Wayne Comrie	OSCC	Wayne Comrie
Tyler Stokart	Cyclist	Tyler Stokart
John Taylor	DETAYLOR Jewellers	John Taylor



Bill Nafziger
Hepworth Anglers Club

COMMENTARY:

Shown L to R in the attached photo are Bill Nafziger (Hepworth Club), Ross Lamont (Trillium Mutual Insurance), Rick Rusk (Hepworth Club) Martin Ostrega (summer student holding the flow meter), Jed Rusk (Hepworth Club), Peter Mamaghan (summer student) and Dr. James Hamilton (Wilfrid Laurier).

The Hepworth Anglers Club thank Trillium Mutual Insurance Roots Program, for their \$4000 contribution to acquire a flow meter. The flow meter will be used in conjunction with data from monitoring stations and a weather station to manage Spring Creek, a cold water stream which contributes up to 40% of water in the Sauble River at their confluence during the summer.

An ongoing restoration project has increased spawning areas and nursery habit in Spring Creek, for rainbow and lake run brown trout, chinook and coho salmon. Spring Creek has become a natural reproducing migratory fish hatchery, providing an increased migratory fishery benefitting anglers in the Sauble River and Lake Huron, including the public watching returning spawning fish access Sauble Falls.

[20220608_170040.jpg]

MEDIA RELEASES AND ARTICLES

ATTACHMENT #6

Grey Sauble Conservation Authority

August 19, 2022

"Grey Sauble Conservation Foundation Awards 2022 Scholarship"

https://www.greysauble.on.ca/wp-content/uploads/2022/08/FOUNDATION_AWARDS_SCHOLARSHIP_2022.pdf

Bayshore Broadcasting

August 16, 2022

"Former Bruce-Grey-Owen Sound MPP Bill Murdoch Has Passed Away"

[Former Bruce-Grey-Owen Sound MPP Bill Murdoch Has Passed Away | Bayshore Broadcasting News Centre](#)

Collingwood Today

August 11, 2022

"Craigleith Aquavil development 'very close' to final agreement"

<https://www.collingwoodtoday.ca/the-blue-mountains-and-grey-highlands/craigleith-aquavil-development-very-close-to-final-agreement-5681433>

The Owen Sound Sun Times

July 22, 2022

"Greig running for deputy-mayor's job in Owen Sound"

<https://www.owensoundsuntimes.com/news/local-news/greig-running-for-deputy-mayors-job-in-owen-sound>



Dick Hibma, Darryl Blair, Don Sankey

Grey Sauble Authority Board of Directors

M O T I O N

DATE: August 24, 2022

MOTION #: FA-22-071

MOVED BY: _____

SECONDED BY: _____

THAT in consideration of the Consent Agenda Items listed on the August 24, 2022, agenda, the Grey Sauble Conservation Authority Board of Directors receives the following items: (i) Environmental Planning – Section 28 Permits – July 2022; (ii) Administration – Receipts & Expenses – July 2022; (iii) Petition for Biking at Inglis Falls Conservation Area; Hepworth Anglers Club; (vi) Recent Media Articles



STAFF REPORT

Report To: Board of Directors
Report From: Tim Lanthier, CAO
Meeting Date: August 24, 2022
Report Code: 022-2022
Subject: 2022 Q2 Budget Report Back

WHEREAS the Board of Directors approved the GSCA 2022 Operating and Capital Budget on December 22, 2021, by motion FA-21-151,

THAT, the Board of Directors receive staff report 022-2022 – 2022 Q2 Budget Report Back as information.

Strategic Initiative:

This item is part of GSCA's corporate services that supports and assists all of GSCA's Strategic Plan deliverables and desired outcomes.

Summary:

Overall, GSCA has experienced a few unbudgeted changes in the first two quarters of 2022. We experienced some staffing changes, some unexpected maintenance expenses, and another dramatic rise in insurance premiums.

Due to these changes, the 2022 Budget is showing a slight deficit at the end of the second quarter.

Analysis:

The summaries below provide a brief synopsis of the 2022 Q2 Budget and anticipated year-end forecasts by program area. The Q2 budget update is included as an appendix to this report.

Water Management

The Water Management budget is generally forecasted to balance based on the revenues and expenses at the end of Q2. A minor deficit (1.6%) is noted associated with a slight increase in salary costs.

Watershed Monitoring and Management

The Watershed Monitoring and Management budget is forecasted to remain balanced based on the revenues and expenses at the end of Q2.

Stewardship

The Stewardship budget is forecasted to remain balanced based on the revenues and expenses at the end of Q2.

It should be noted that both the revenues and expenses are forecasted to increase over the originally budgeted amounts. This change is associated with increased grant funding and a corresponding increase in project costs.

Environmental Planning

The Environmental Planning budget is forecasted to remain balanced based on the revenues and expenses at the end of Q2.

There is a forecasted increase in both revenues and expenditures in this department. The increase in expenses is associated with increased legal fees and an increase in staffing costs, both based on Board resolutions earlier in the year. This is countered on the revenue side of the budget with an increase in surplus use, also recognized through a Board resolution earlier in the year.

Forestry, Species & Forestry Services

Overall, the Forestry portion of the budget balanced and is forecasted to draw less from reserves than originally budgeted.

This Department does not utilize levy funding.

Conservation Lands Policy & Strategy

The Conservation Lands Policy & Strategy portion of the budget is forecasted to remain balanced based on the revenues and expenses at the end of Q2. There is an increase in salary and wages and a corresponding increase in use of surplus as per a Board resolution in February of this year.

Grey County Management Contract

The Grey County Management Contract is forecasted to be approximately \$1,000 over budget by the end of 2022. This will be discussed with Grey County through ongoing program updates.

This program area is funded 100 percent through a service agreement with Grey County.

Conservation Lands Operations

The Conservation Lands Operations portion of the budget is forecasted to remain balanced based on the revenues and expenses at the end of Q2. Increases on the expense side are balanced by increases on the revenues side. It is also forecasted that this department will be able to contribute more to reserves in 2022 than originally budgeted.

The Conservation Lands Operations Department is able to operate in 2022 with the same amount of levy as 2021, despite inflationary costs.

Conservation Information & Community Outreach

This Department is forecast to have a minor deficit (4.0%) at the end of 2022. This is the result of an increase in expenses associated with staffing costs.

Education

This Department is forecast to have a small deficit (6.3%) at the end of 2022. This is the result of an increase in expenses associated with staffing costs and a lower-than-expected registration rate.

Administration, Finance & Human Resources

This Department is forecast to have a minor deficit (2.8%) at the end of 2022. This is the result of an increase in expenses associated with staffing costs, another dramatic increase in insurance costs, and general inflationary costs of materials and services.

GIS, Information Management & Information Technology

This Department is forecast to have a minor deficit (1.9%) at the end of 2022. This is the result of an increase in expenses associated with staffing costs.

Source Water Protection

The Source Water Protection budget is forecasted to remain balanced based on the revenues and expenses at the end of Q2.

Source Water Risk Management Service

The Source Water Risk Management Services budget is forecasted to remain balanced based on the revenues and expenses at the end of Q2.

Subject: 2022 Q2 Budget Report Back

Report No: 022-2022

Date: August 24, 2022

Fleet & Equipment Management

The Fleet and Equipment Management budget is forecasted to remain balanced based on the revenues and expenses at the end of Q2.

Capital Budget

All portions of the Capital Budget are forecast to balance at the end of 2022 based on the revenues and expenses at the end of Q2.

Consultation:

Senior Management Team

GREY SAUBLE CONSERVATION AUTHORITY 2022 APPROVED BUDGET

	Approved 2021 Budget	2021 Actual Q2	Approved 2022 Budget	2022 Actual Q2	Forecast
WATER MANAGEMENT					
Flood Forecasting & Warning					
Total Flood Forecasting & Warning	132,399	51,543	140,177	59,058	142,475
Flood Control Structures					
Total Flood Control Structures	7,350	5,912	7,350	2,588	9,350
Erosion Control Structures					
Total Erosion Control Structures	2,100		2,100	-	2,100
Other Dams					
Total Other Dams	21,141	6,157	21,100	5,719	15,100
TOTAL WATER MANAGEMENT	162,990	63,612	170,727	67,364	169,025
Watershed Monitoring & Management					
Total Watershed Monitoring & Management	36,781	7,446	36,928	14,746	36,928
Stewardship					
Total Stewardship	92,552	27,307	62,776	35,044	175,648
Environmental Planning & Regulations					
Total Environmental Planning & Regulations	405,066	188,275	414,298	228,085	472,949
Forestry, Species & Forestry Services					
Total Forestry, Species & Forestry Services	139,650	63,502	141,959	53,226	121,700
Grey Sauble Forestry Service					
Total Grey Sauble Forestry Service	215,222	215,622	249,602	155,570	218,345
TOTAL FORESTRY & SPECIES	354,872	279,124	391,561	208,796	340,045
CONSERVATION LANDS					
Conservation Lands Policy & Strategy					
Total Conservation Lands Policy & Strategy	203,995	102,373	234,904	124,582	251,505
Grey County Management Contract					
Total Grey County Management Contract	174,364	47,808	200,895	71,625	201,892
Conservation Lands Operations					
Total Conservation Lands Operations	357,152	124,548	353,844	151,835	449,044
TOTAL CONSERVATION LANDS	735,511	274,729	789,642	348,042	902,441

	Approved 2021 Budget	2021 Actual Q2	Approved 2022 Budget	2022 Actual Q2	Forecast
WATER MANAGEMENT					
Flood Forecasting & Warning					
Total Flood Forecasting & Warning	132,399	51,500	140,177	53,992	140,177
Flood Control Structures					
Total Flood Control Structures	7,350	2,854	7,350	2,853	9,350
Erosion Control Structures					
Total Erosion Control Structures	2,100	550	2,100	550	2,100
Other Dams					
Total Other Dams	21,141	9,321	21,100	10,550	15,100
TOTAL WATER MANAGEMENT	162,990	64,224	170,727	67,945	166,727
Watershed Monitoring & Management					
Total Watershed Monitoring & Management	36,781	17,791	36,928	18,464	36,928
Stewardship					
Total Stewardship	92,552	103,143	62,776	130,692	175,648
Environmental Planning & Regulations					
Total Environmental Planning & Regulations	405,066	225,722	414,298	223,561	472,948
Forestry, Species & Forestry Services					
Total Forestry, Species & Forestry Services	58,372	25,794	141,959	53,764	121,700
Grey Sauble Forestry Service					
Total Grey Sauble Forestry Service	296,500	225,630	249,602	125,181	218,345
TOTAL FORESTRY & SPECIES	354,872	251,425	391,561	178,945	340,045
CONSERVATION LANDS					
Conservation Lands Policy & Strategy					
Total Conservation Lands Policy & Strategy	203,995	120,732	234,904	124,127	251,505
Grey County Management Contract					
Total Grey County Management Contract	174,364	46,460	200,895	74,243	201,892
Conservation Lands Operations					
Total Conservation Lands Operations	357,152	157,815	353,844	161,830	449,044
TOTAL CONSERVATION LANDS	735,511	325,006	789,642	360,200	902,441

	Approved 2021 Budget	2021 Actual Q2	Approved 2022 Budget	2022 Actual Q2	Forecast
Conservation Information & Community Outreach	Community Outreach				
Total Conservation Information & Community Outreach	98,856	47,559	96,326	47,994	100,222
Education	Education				
Total Education	52,290		67,108	21,394	67,182
Administration, Finance & Human Resources					
Total Administration, Finance & Human Resources	569,429	307,156	598,750	308,649	625,927
GIS, Information Management & Information Technology					
Total GIS & Information Management	269,432	119,527	277,494	140,252	305,837
Source Water Protection					
Total Source Water Protection	181,804	90,524	188,660	87,493	213,406
Source Water Risk Management Service					
Total Source Water Risk Management Service	61,427	30,159	67,460	31,351	67,527
Fleet & Equipment Management					
Total Fleet & Equipment Management	90,500	46,923	83,500	35,969	83,500
Total Operating Budget	3,111,511	1,482,341	3,245,231	1,575,179	3,560,637
Total Operations Budget Expenses					
Salary, wages & benefits	2,295,069	1,049,792	2,443,689	1,159,746	2,497,206
Contracts & Services	201,764	118,221	215,470	120,670	292,242
Vehicles & Equipment	90,500	31,658	83,500	30,805	78,500
Materials & Supplies	224,220	178,042	226,371	144,358	303,664
Training & Workshops	18,000	2,245	15,000	689	21,000
Donations	100		100	-	
Other	184,875	102,383	216,105	118,910	227,600
To Reserves	96,983	-	44,996	-	120,858
To Deferred Revenue/Surplus					
Total Operating Budget	3,111,511	1,482,341	3,245,231	1,575,179	3,541,069

	Approved 2021 Budget	2021 Actual Q2	Approved 2022 Budget	2022 Actual Q2	Forecast
Conservation Information & Community Outreach					
Total Conservation Information & Community Outreach	98,856	55,092	96,326	47,249	96,326
Education					
Total Education	52,290		67,108	53,800	62,946
Administration, Finance & Human Resources					
Total Administration, Finance & Human Resources	569,429	281,139	598,750	287,624	609,396
GIS, Information Management & Information Technology					
Total GIS & Information Management	269,432	116,115	277,494	134,452	300,494
Source Water Protection					
Total Source Water Protection	181,804	171,691	188,660	189,582	213,406
Source Water Risk Management Service					
Total Source Water Risk Management Service	61,427	48,500	67,460	50,200	67,527
Fleet & Equipment Management					
Total Fleet & Equipment Management	90,500	43,989	83,500	30,663	83,500
Total Operating Budget	3,111,511	1,703,836	3,245,231	1,773,375	3,528,334
Total Operations Budget Funding					
Municipal Levy	1,432,136	716,068	1,515,330	757,665	1,515,330
CAA S39	37,056	-	37,056	-	37,056
MECP (DWSP)	181,804	171,691	188,660	188,504	211,406
Agreements, MOUs and Grants	223,413	199,944	140,625	187,474	267,831
Services & Sales	1,073,902	593,240	1,093,904	628,421	1,190,305
Donations	6,600	1,317	1,600	-	1,600
Interest & Gains	4,000	2,330	2,000	4,311	8,500
From Reserves	152,599	19,245	239,195	-	194,795
From Deferred Revenue/Surplus			26,861	7,000	101,511
Total Operating Budget	3,111,511	1,703,835	3,245,231	1,773,375	3,528,334

ADDENDUM #2

GREY SAUBLE CONSERVATION AUTHORITY 2022 APPROVED CAPITAL BUDGET

EXPENSES				FUNDING			
	2022 Budget	2022 YTD Q2	2022 Forecast		2022 Budget	2022 YTD Q2	2022 Forecast
WATER MANAGEMENT				WATER MANAGEMENT			
Flood Forecasting & Warning				Flood Forecasting & Warning			
To Reserves	25,000	25,000	25,000	Municipal Levy	25,000	25,000	25,000
Clendenan Log replacement Phase 1				Clendenan Log replacement Phase 1			
Materials and Supplies	5,000		5,000	Reserves	5,000		2,500
				WECI			2,500
Jet Winches for Clendenan				Jet Winches for Clendenan			
Materials and Supplies	9,000		9,000	Reserves	9,000		4,500
				WECI			4,500
WATER MANAGEMENT Subtotal	39,000	25,000	39,000	WATER MANAGEMENT Subtotal	39,000	25,000	39,000
CONSERVATION LANDS Policy/Operations				CONSERVATION LANDS Policy/Operations			
Entrance Signs				Entrance Signs			
Contracts & Services	4,800		4,800	Municipal Levy	4,800		4,800
				Reserves			
Lake Charles - Washroom Removal				Lake Charles - Washroom Removal			
Contracts & Services	2,000		2,000	Municipal Levy			
				Sales and Services			
				Reserves	2,000		2,000
Feversham Washroom				Feversham Washroom			
Contracts and Services	5,000		5,000	Municipal Levy	5,000		5,000
Various - Stone Repointing Projects				Various - Stone Repointing Projects			
Contracts & Services	6,000		6,000	Reserves	6,000		6,000
CONSERVATION LANDS Subtotal	17,800	-	17,800	CONSERVATION LANDS Subtotal	17,800	-	17,800

EXPENSES

	2022 Budget	2022 YTD Q2	2022 Forecast
Administration, Finance & Human Resources Admin Centre refurbish - Phase 1 & 2 Contracts & Services	100,000		100,000
Admin Centre - Office Furniture Materials and Supplies	5,000		5,000
Administration, Finance & Human Resources Subtotal	105,000	-	105,000

GIS, Information Management & Information Technology -Owl Materials & Supplies Equipment		1,425	1,425
---	--	-------	-------

GIS, Information Management & Information Technology - GPS Units/Tablets Materials & Supplies	1,000		
---	-------	--	--

GIS, Information Management & Information Technology - Printer Materials & Supplies Equipment		1,167	
--	--	-------	--

FUNDING

	2022 Budget	2022 YTD Q2	2022 Forecast
Administration, Finance & Human Resources Admin Centre refurbish Phase 1 & 2 Reserves	100,000		100,000
Admin Centre - Office Furniture Municipal Levy Reserves	2,000 3,000		2,000 3,000
Administration, Finance & Human Resources Subtotal	105,000	-	105,000

GIS, Information Management & Information Technology - 2021 Servers From Reserves Municipal Levy		425 1,000	425 1,000
---	--	--------------	--------------

GIS, Information Management & Information Technology - GPS Units From Reserves Municipal Levy	1,000		
--	-------	--	--

GIS, Information Management & Information Technology - 2020 Smart Screen From Reserves Municipal Levy		1,167	
--	--	-------	--

EXPENSES

	2022 Budget	2022 YTD Q2	2022 Forecast
GIS, Information Management & Information Technology - Workstations			
Materials & Supplies	9,000	4,508	9,000
GIS, Information Management & Information Technology - Subtotal	10,000	7,100	10,425
Fleet & Equipment Management			
Vehicles & Equipment	35,000		35,000
To Lands Operations			
Fleet & Equipment Management Subtotal	35,000	-	35,000
Total Proposed Capital Budget	206,800	32,100	207,225

	2022 Budget	2022 YTD Q1	2022 Forecast
Total Capital Budget			
Salary, wages & benefits			
Contracts & Services	117,800	-	117,800
Vehicles & Equipment	35,000	-	35,000
Materials & Supplies	29,000	7,100	29,425
Training & Workshops			
Donations			
Other	-		
To Reserves	25,000	25,000	25,000
To Deferred Revenue			
Total Capital Budget	206,800	32,100	207,225

FUNDING

	2022 Budget	2022 YTD Q2	2022 Forecast
GIS, Information Management & Information Technology - Workstations			
Municipal Levy	4,500	4,500	4,500
Reserves	4,500	8	4,500
GIS, Information Management & Information Technology - Subtotal	10,000	7,100	10,425
Fleet & Equipment Management			
Services & Sales			
From Reserves	35,000		35,000
Fleet & Equipment Management Subtotal	35,000	-	35,000
Total Proposed Capital Budget	206,800	32,100	207,225

	2022 Budget	2022 YTD Q1	2022 Forecast
Total Capital Budget			
Municipal Levy	42,300	30,667	42,300
CAA S39			
MECP (DWSP)			
Agreements, MOUs and Grants	-		7,000
Services & Sales	-		
Donations	-		
Interest & Gains			
From Reserves	164,500	433	157,925
From Deferred Revenue			
Total Capital Budget	206,800	31,100	207,225



Grey Sauble Authority Board of Directors

M O T I O N

DATE: August 24, 2022

MOTION #: FA-22-072

MOVED BY: _____

SECONDED BY: _____

WHEREAS the Board of Directors approved the GSCA 2022 Operating and Capital Budget on December 22, 2021, by motion FA-21-151,

THAT, the Board of Directors receive staff report 022-2022 – 2022 Q2 Budget Report Back as information.



Your Investment Account statement

April 1, 2022 to June 30, 2022

GREY SAUBLE CONSERVATION
Portfolio number: MP3613
Portfolio type: Investment Account

Your portfolio at a glance

You need to know

Please see **page 12** for important information about your portfolio.

Please see **page 14** for further information about Your portfolio at a glance section.

	This period (Apr 1 - Jun 30, 2022)	Year to date (Jan 1 - Jun 30, 2022)	Last 12 months (Jul 1, 2021 - Jun 30, 2022)	Last 3 years (Jul 1, 2019 - Jun 30, 2022)	Since Apr 10, 2015 (Apr 10, 2015 - Jun 30, 2022)
Beginning portfolio balance	\$1,528,651.47	\$1,590,202.52	\$1,331,642.19	\$1,182,269.94	\$0.00
Deposits & transfers-in of securities	\$0.00	\$0.00	\$200,000.00	\$200,000.00	\$1,200,000.00
Withdrawals & transfers-out of securities	\$0.00	\$0.00	\$0.00	\$0.00	\$0.00
Fees	-\$3,847.09	-\$7,939.20	-\$16,144.79	-\$43,823.25	-\$97,818.99
Investment income:					
Dividends	\$5,217.34	\$10,984.09	\$32,645.79	\$73,775.98	\$96,587.62
Interest	\$25.71	\$3,028.17	\$8,595.13	\$36,190.91	\$142,856.92
Realized capital distributions, gains and losses	-\$17,827.59	-\$17,827.59	\$57,617.95	\$70,479.15	\$126,552.83
Change in unrealized capital gains and losses	-\$113,300.56	-\$179,528.71	-\$219,051.69	-\$133,872.78	-\$82,971.55
Adjustments for the period	\$424.51	\$424.51	\$4,039.21	\$2,820.47	\$2,633.59
Unallocated distributions for the current year	\$0.00	\$0.00	N/A	N/A	N/A
Ending portfolio balance	\$1,399,343.79	\$1,399,343.79	\$1,399,343.79	\$1,399,343.79	\$1,399,343.79

On June 30, 2022, CAD 1.00 = USD 0.77640

Your personal rates of return as of Jun 30, 2022

This period	Year to date	For the last 12 months	For the last 3 years	For the last 5 years	Since Apr 10, 2015
-8.55%	-12.09%	-8.86%	0.39%	1.91%	2.45%

Personal rate of return reflects the total percentage return earned on the investments held in your account. Total percentage return means the cumulative realized and unrealized capital gains and losses of an investment, plus income from the investment, over a specified period of time, expressed as a percentage.

Personal rate of return is calculated using a money-weighted methodology. Unlike alternative rate of return methodologies, it takes into account any deposits or withdrawals you have made, and the performance outcomes of your investments over a specified time period, net of fees and charges paid. Rates of return are provided on an annualized basis except for any returns reflective of a period of less than one year.

This historical data offers you a longer term perspective about your account's performance and progress towards your goals.



STAFF REPORT

Report To: Board of Directors
Report From: Michael Fry, Forestry Coordinator
Meeting Date: August 24, 2022
Report Code: 023-2022
Subject: GSCA Invasive Plant Species Strategy

Recommendation:

WHEREAS, invasive plant species have negative impacts on the environment, economy, and society;

AND WHEREAS, the GSCA watershed is seeing an increasing number of invasive species annually and GSCA have been working to control invasive species on its properties;

THAT, the GSCA Board of Directors approve the Invasive Plant Species Strategy;

AND THAT, the GSCA Board of Directors approve, in principle, the recommendation that \$15,000 be put into the 2023 operating budget for GSCA to manage invasive species on GSCA properties as per Appendix B of the Strategy;

Strategic Initiative:

This item relates to GSCA's Strategic Plan Goal of 'Enhance GSC Land Management and Natural Heritage Preservation.'

Background/Discussion:

Invasive species are plants, animals, insects, and pathogens that are introduced to an area and cause harm to the environment, economy, or society. Unfortunately, the GSCA watershed is not immune to the invasion or impact of these species. Over the

last number of years, the number of invasive species within the GSCA watershed has been increasing, causing negative impacts.

Currently, GSCA has been working to control invasive species on its properties and has been working with local groups and individuals to control them. The amount of work is increasing, and a more concerted effort needs to be put forward to control invasive species. The GSCA Invasive Plant Species Strategy provides various invasive species management strategies, species prioritization, and a decision flow chart. This flow chart will assist staff in deciding which species and occurrences to manage.

Financial/Budget Implications:

Staff are recommending \$15,000 be put into the 2023 budget to manage invasive species on GSCA properties as identified within Appendix B of the Invasive Plant Species Strategy (attached). This amount will allow staff to continue existing invasive species management and begin the work identified.

Communication Strategy:

GSCA will report annually on its invasive species management activities.

Consultation:

CAO, Manager of Conservation Land, Forestry staff



DRAFT Invasive Plant Species Strategy

A strategy for monitoring and controlling invasive
plant species on GSCA properties.



PROTECT. RESPECT. CONNECT.

237897 Inglis Falls Road, Owen Sound ON, N4K 5N6

519-376-3076

www.greysauble.on.ca

Table of Contents

INTRODUCTION	2
WHAT ARE INVASIVE SPECIES?.....	2
IMPACTS OF INVASIVE PLANTS	2
<i>Natural Areas</i>	2
<i>Agriculture</i>	2
<i>Forestry</i>	2
<i>Human Health</i>	2
WHY CONTROL INVASIVE SPECIES?	3
STRATEGIES FOR CONTROLLING INVASIVE SPECIES.....	3
<i>Prevention</i>	3
<i>Communication</i>	3
<i>Best Management Practices (BMP)</i>	3
<i>Prioritization</i>	3
<i>Implementation</i>	4
<i>Collaboration</i>	4
<i>Policy</i>	4
<i>Monitoring (and Research)</i>	4
PRIORITIZATION OF INVASIVE SPECIES FOR CONTROL	4
PRIORITY SPECIES	4
SELECTING A CONTROL METHOD	6
MEASURING SUCCESSES AND REPORTING	6
SCOPING / FINANCIAL IMPLICATIONS	6
ADDITIONAL RESOURCES	6
REFERENCES	7
APPENDIX B – 2023 PRIORITY INVASIVE SPECIES ON GSCA PROPERTIES	10
APPENDIX C – BEST MANAGEMENT PRACTICES	11
APPENDIX D – INVASIVE SPECIES PRESCRIPTION TEMPLATE.....	12
APPENDIX E – SUMMARY OF INVASIVE SPECIES ON GSCA PROPERTIES	15

Introduction

Grey Sauble Conservation Authority (GSCA) will aim to control invasive plant species that are present on their properties through various control measures. Selection of species to control and associated control methods will be on a case-by-case basis.

GSCA will work to provide information to its watershed residents about identification, damage, and control measures. This may be through its website or other means.

What are Invasive Species?

Invasive species are plants, animals, insects, and pathogens that are introduced to an area and cause harm to the environment, economy, or society (Invasive Species Centre, 2022). Invasive species generally do not have any natural predators within these new ecosystems and are able to outcompete native species for scarce resources. An introduced species is not considered an invasive species unless it causes negative environmental, economic, or social impacts. An example of an introduced, non-invasive species is European larch (*Larix decidua*).

Impacts of Invasive Plants

Invasive plants can cause numerous negative impacts to GSCA properties and associated infrastructure, their visitors, and the surrounding landscape.

Natural Areas

Natural areas have developed over many years and provide many benefits to society and the environment. These areas provide numerous ecosystem services including water and air filtration, habitat and food for wildlife, production of oxygen, and recreational and educational opportunities. These ecosystems can be sensitive to change and oftentimes when an invasive species is introduced to an area, they will outcompete the native species and alter the species composition and threaten the natural balance and services these areas offer.

Agriculture

Invasive species can have extremely negative impacts on agricultural activities. Invasive plants can be vectors for pests and diseases that harm crops, reduce crop yields, and require additional use of pesticides to control them. Several invasive species have been known to take over farmland effectively reducing the yield of desirable crops or reducing the amount of area available to pasture livestock. An example is knapweed sp. (*Centaurea spp.*).

Forestry

Like agriculture, invasive species can have negative impacts on a forest's productivity and its ability to regenerate itself. Invasive species can outcompete desirable native species reducing their overall numbers and growth rates. Within plantations, common buckthorn (*Rhamnus cathartica*) quickly establishes in recently harvested areas and forms dense canopies which stop or hinders the regeneration of desirable native species.

Human Health

Some invasive species are known to cause physical harm to humans. For example, the sap of giant hogweed (*Heracleum mantegazzianum*) is known to cause severe dermatitis if it comes in contact with the skin.

Other species, such as invasive phragmites (*Phragmites australis*) forms dense stands within ditches and rights-of-way that can block visibility. This can increase the chance of car accidents. Dead stalks of Phragmites are also known to become very flammable.

Why Control Invasive Species?

Due to the lack of natural predators, when an invasive species is introduced to a new environment, they can quickly become established and grow unchecked. Some invasive species prey directly on native species and reduce their populations. This will reduce the amount of biodiversity within an area and in some cases extirpation of native species can occur.

Invasive species management is a difficult task that can be expensive and time consuming. For certain species one intervention is enough while for many others require multiple interventions. For all control efforts, challenges exist in securing funding, expertise, and resources. For certain projects, funding is only available for a single year, potentially causing problems for species requiring multiple years of control. Invasive species management plans are long-term plans but with the uncertainty of funding for multiple years, can be challenging to execute.

Each of the strategies listed below relate to each other and in many cases overlap with at least one other strategy. For instance, preventing the introduction of an invasive species may include an education component, collaboration with other groups, communication with the public about identifying an invasive species, and sharing of best management practices publicly.

Strategies for Controlling Invasive Species

The following strategies will be used for all invasive species. In many cases, multiple strategies will be utilized for the same occurrence. For instance, if wild chervil (*Anthriscus sylvestris*) is found on a GSCA property, staff may communicate the negative impacts of it through social media channels, implement a control strategy, collaborate with other organizations to develop/influence policy decisions, and after control efforts monitor the site for control efficacy.

For each finding, a property and species-specific plan/prescription will be developed.

Prevention

- Preventing an invasive species from entering an area is the preferred method of control as it costs the least and has the least impact on the environment, economy, and society.

Communication

- Along with prevention, communication is a key component of any invasive species strategy. Building awareness of invasive species is key to achieving GSCA's goals and objectives.

Best Management Practices (BMP)

- Numerous studies have been completed indicating the most effective control means for many different invasive species. There are many factors that go into controlling invasive species and individual results may vary. GSCA will work to incorporate known BMPs into invasive species control methods, while also applying learnings from past control methods.

Prioritization

- Controlling every occurrence of invasive species on GSCA properties is not possible. Prioritization is required to make headway and allow for focused control efforts. GSCA has adapted a 'Decision Support Key' (Appendix A) from Credit Valley Conservation, to assist with identifying and selecting species and areas for control.

Implementation

- Implementation is conducting the work to control an invasive species. Control efforts for certain invasive species at specific GSCA properties has taken place. When an invasive species is identified on a GSCA property, the Decision Support Key will be used to determine next steps. Invasive species management requires long-term commitments and available resources. Where possible, GSCA will continue to seek funding.

Collaboration

- GSCA understands it cannot control all invasive species alone. Working with others through partnerships (formal and informal) is key to long-term success. Staff will seek to maintain current partnership and build additional ones. Groups and organizations may include municipalities, neighbouring Conservation Authorities, or local naturalist groups.

Policy

- GSCA will aim to work with various levels of government and key stakeholders to create and influence policies and guidelines to assist in the control of invasive species.

Monitoring (and Research)

- GSCA will seek to stay up to date on current research and control methods. GSCA will aim to support groups monitoring and researching invasive species.

Prioritization of Invasive Species for Control

Identifying and controlling invasive species before they become established within an area is key. Controlling invasive species once they have become established within an area can become extremely costly and time consuming.

GSCA will follow the 'Invasive Species Decision Key' (Appendix A) to identify appropriate next steps when an invasive species is found on a property.

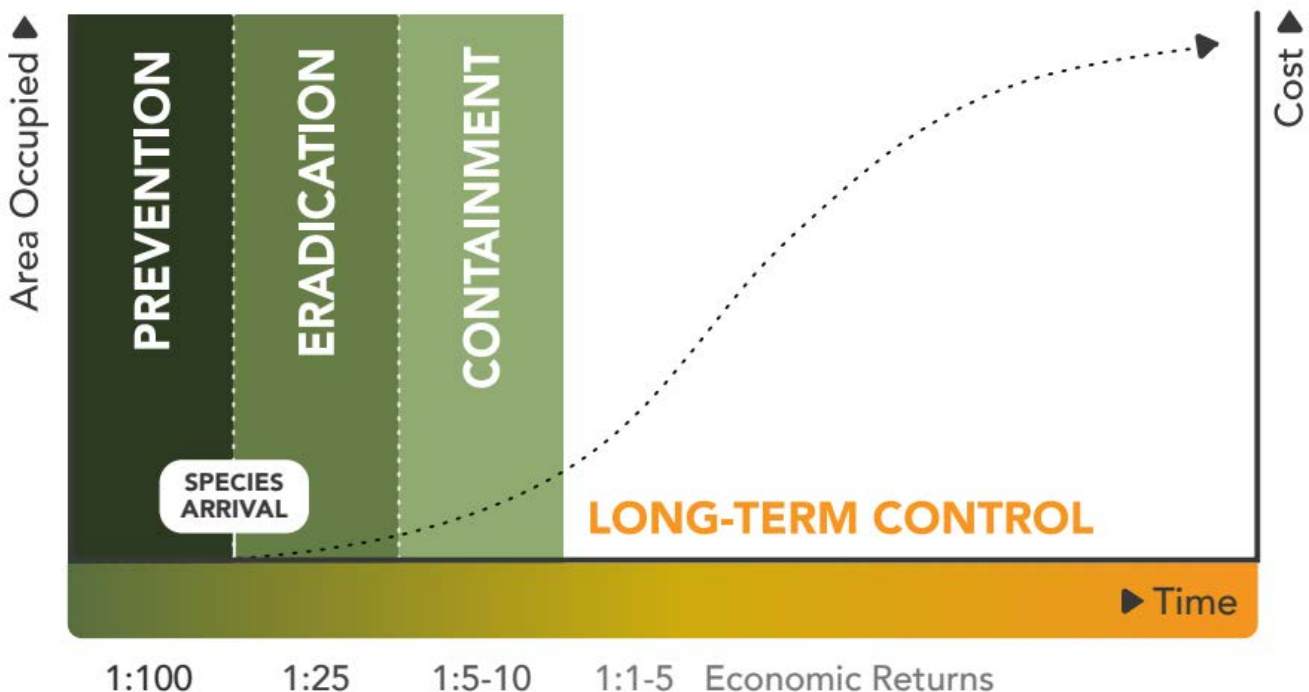
Priority Species

GSCA aims to ensure safe access to its properties for visitors and staff. As such, invasive species known to cause harm to people will be given top priority. Species listed on the Ontario Noxious Weeds list and located near agricultural properties or species which negatively detract from the ability to use GSCA recreational areas will be given next highest priority, and species known to spread quickly and cause severe harm to the natural environment will be given the next highest priority. Invasive species that do not cause a safety risk to visitors, do not impact agriculture as per the Ontario Noxious Weeds list, do not spread quickly, and those that have no known control tools/techniques will be given the lowest priority. The table below provides examples and potential actions for when an invasive species is found.

Priority Level	Management Trigger	Example	Action
Top priority	<ul style="list-style-type: none"> - Species known to cause bodily harm - Species listed on Ontario Noxious Weeds List* - Species directly affecting GSCA recreational areas 	<ul style="list-style-type: none"> - Giant hogweed - Wild parsnip (<i>Pastinaca sativa</i>) - Wild chervil - Phragmites 	<ul style="list-style-type: none"> - Begin control measures as soon as possible. Close the area, if necessary, and place signs informing the public.
Medium priority	<ul style="list-style-type: none"> - Species known to reproduce and spread quickly - Small isolated/satellite population - Newly established/detected population - Rapidly expanding population 	<ul style="list-style-type: none"> - Garlic mustard (<i>Alliaria petiolata</i>) - Dog-strangling vine (<i>Vincetoxicum rossicum</i> & <i>Vincetoxicum nigrum</i>) - Buckthorn - Non-native honeysuckle sp. (<i>Lonicera spp.</i>) 	<ul style="list-style-type: none"> - Develop a management plan. - If budget and staffing resources are available, initiate management plan.
Low Priority	<ul style="list-style-type: none"> - Species known to spread slowly - Species that do not cause physical harm to visitors - Species with no known control tools/techniques 	<ul style="list-style-type: none"> - Periwinkle (<i>Vinca minor</i>) 	<ul style="list-style-type: none"> - Monitor population. - If population grows, affects species-at-risk, or poses safety risk initiate control measures.

*http://omafra.gov.on.ca/english/crops/facts/noxious_weeds.htm

The figure below shows relative cost (economic) ratios of invasive species management at different times of invasion. Preventing entry of an invasive species is 100 times higher than long-term control measures. Eradication is estimated to be 25 times greater, and containment is 5-10 times. This figure highlights the need for prevention of entry and communication of invasive species over control efforts.



Adapted from Generalized Invasion Curve (Agriculture Victoria, 2009).

If an invasive species enters an area, early detection and control are still much cheaper and effective than waiting and implementing control measures after the species is established.

Selecting a Control Method

Many invasive species there are several control methods to choose from. These may include manually pulling, cutting, solarizing, applying herbicides, and/or using biological control agents. Each control method will have its own advantages and disadvantages. The advantages and disadvantages will be weighed to reduce potential impacts on the environment while meeting the goals of the control program. If possible and where appropriate, partner organizations and/or volunteers will be utilized to control invasive species. Whenever possible, control methods that do as little harm to the surrounding environment will be selected. In some cases, it is not feasible to select a control method with zero off-target impacts. In these cases, the damage to non-target species will be minimized as much as possible.

No matter which control method is selected, Best Management Practices and all laws and regulations will be followed.

Measuring Successes and Reporting

For all management projects undertaken, follow up monitoring will be conducted. This may include visiting the site to see if a particular species is present again, measuring the size of an area of invasive species to understand if it has become smaller, or completing an inventory to determine the presence and/or abundance of native species before and after management has taken place.

Annually, a report will be developed explaining the management activities for the year, challenges faced, and plans for the upcoming year.

Scoping / Financial Implications

GSCA identifies the need to control invasive species on its properties and understands that these efforts have a cost. Staff also understand it is not feasible to control every occurrence of an invasive species on an annual basis. Therefore, staff have prioritized several properties and species for initial control efforts. Staff are suggesting \$15,000 per year is earmarked for invasive species control. This includes \$10,000 for staff time and \$5,000 for herbicide/tools. The species and properties located below (Appendix B) are ones that have been identified by staff as having the potential to cause human health problems or negatively affect agricultural production.

Additional Resources

Below are additional resources that maybe useful for controlling invasive species on GSCA properties.

<https://www.invasivespeciescentre.ca/invasive-species/invasive-species-resources/best-management-practices-database/>

https://cvc.ca/wp-content/uploads/2021/01/CVC_InvasiveSpeciesStrategyWEBsingles-lr-1.pdf

https://agriculture.vic.gov.au/_data/assets/pdf_file/0009/582255/Invasive-Plants-and-Animals-Policy-Framework-IPAPF.pdf

References

CVC, 2021 - https://cvc.ca/wp-content/uploads/2020/12/rpt_InvasiveSpeciesStrategy_v16_20201230.pdf. Accessed 26-Jan-22.

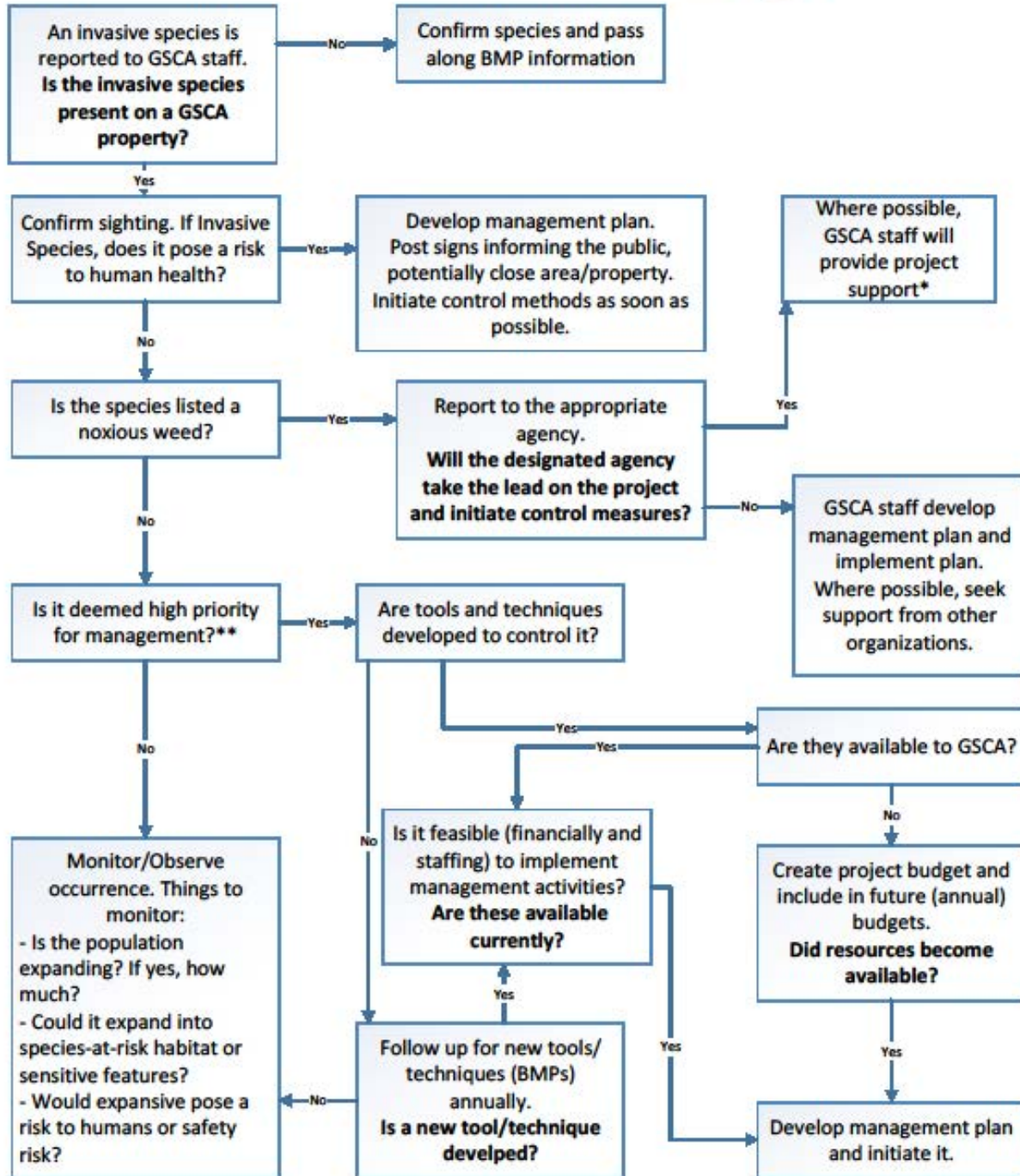
Invasive Species Centre - <https://www.invasivespeciescentre.ca/learn/>. Accessed 26-Jan-22.

CLOCA, 2010 - Invasive Species Management Strategy (cloca.ca). Accessed 06-May-22.

City of Mississauga, 2021 – Invasive Species Management Plan & Implementation Strategy.
<https://www.mississauga.ca/wp-content/uploads/2021/02/18112420/Invasive-Species-Management-Plan.pdf>.
Accessed 04-July-22.

Sherman, Kellie. 2015. Creating an Invasive Plant Management Strategy: A Framework for Ontario Municipalities. Ontario Invasive Plant Council. Peterborough, ON.

Appendix A - Invasive Species Control Decision Key



*Project support may include providing staff, equipment/supplies, education/outreach, access to GSCA property.

**High priority includes priority species based on Invasive Species Strategy, high functioning habitat, known species-at-risk habitat
Adapted from CVC Invasive Species Strategy 2020-2030 – pg 58 - https://cvc.ca/wp-content/uploads/2021/01/CVC_InvasiveSpeciesStrategyWEBSingles-Ir-1.pdf

Appendix B – 2023 Priority Invasive Species on GSCA Properties

GSCA Property	Invasive Species			
	Wild Chervil	Giant Hogweed	Wild Parsnip	Dog-strangling Vine
Skinner's Bluff	Yes - small patch			
Skinner Marsh - McNab Lake	Yes - large patch			
Shallow Lake		Yes - medium patch		
The Glen				Yes - small patch
Inglis Falls	Yes - large patch			
West Rocks	Yes - large patch			
Massie Hills	Yes - large patch			
Bognor Marsh	Yes - large patch			
Clendenan		Yes - small patch		
Griersville	Yes - large patch			

Appendix C – Best Management Practices

Giant Hogweed – https://www.ontarioinvasiveplants.ca/wp-content/uploads/2020/10/GiantHogweed_BMP.pdf

Wild Chervil – <http://www.invadingspecies.com/invaders/plants/wild-chervil/>

Common Buckthorn – https://www.ontarioinvasiveplants.ca/wp-content/uploads/2016/06/OIPC_BMP_Buckthorn.pdf

Phragmites – https://www.ontarioinvasiveplants.ca/wp-content/uploads/2021/05/OIPC_BMP_Phragmites_April302021_D10_WEB.pdf

Garlic Mustard – https://www.ontarioinvasiveplants.ca/wp-content/uploads/2016/07/OIPC_BMP_GarlicMustard.pdf

Wild Parsnip – https://www.ontarioinvasiveplants.ca/wp-content/uploads/2016/07/OIPC_BMP_WildParsnip_Feb182014_FINAL2.pdf

Dog-strangling Vine - https://www.ontarioinvasiveplants.ca/wp-content/uploads/2016/06/OIPC_BMP_DogStranglingVine.pdf

Appendix D – Invasive Species Prescription Template



519.376.3076
 237897 Inglis Falls Road
 Owen Sound, ON N4K 5N6
www.greysauble.on.ca

Protect.
 Respect.
 Connect.

GSCA Invasive Species Control Prescription

Compartment Details:

Property Name/Management Area: _____
 Compartment Number: _____
 Lot: _____ Concession: _____
 Municipality: _____ Former Township: _____

Property/Stand Details:

(see attached map)

Invasive Species Found (list all that were found):

Current Land Cover: Forested Agriculture Open

Accessibility (able to get a pickup truck to site, is there a long hike, is the site roadside, etc...):

Potential Concerns (note accessibility by the public, known user groups, etc...):

Presence of Species-at-Risk? Yes No Unknown

If yes, please let them? _____

Treatment:

Best Management Practices document available? Yes No

If yes, can suggested BMPs be applied to site? Yes No

Recommended Treatment:

Follow-up Recommendations:

Member Municipalities

Municipality of Arran-Elderslie, Town of the Blue Mountains, Township of Chatsworth, Township of Georgian Bluffs, Municipality of Grey Highlands, Municipality of Meaford, City of Owen Sound, Town of South Bruce Peninsula

Strategies – where appropriate, describe possible actions for each strategy. If none, put N/A:

Prevention:

Communication:

Prioritization:

Collaboration:

Policy:

Monitoring (and Research):

Prepared By: _____

Date Prepared: _____

Appendix E – Summary of Invasive Species on GSCA Properties

Property	Beech Bark Disease	Beech Scale Insect	Bell's Honeysuckle	Butternut Canker	Coltsfoot	Common Buckthorn	Common Privet	Dog Strangling Vine	Garlic Mustard	Goutweed	Gypsy Moth Caterpillar	Holly Leaved Oregon Grape	Invasive Honeysuckle Sp.	Japanese Barberry	Japanese Knotweed	Lamb's Ear	Lamium	Manitoba Maple	Morrow's Honeysuckle	Norway Maple	Oriental Bittersweet	Periwinkle	Phragmite / Common Reed	Purple Loosestrife	Reed Canary Grass	Scotch Pine	Silver Or White Poplar	Tartarian Honeysuckle	Tufted (cow) Vetch	Wild Chervil	Total by Property	
AINSLIE WOOD														1																	1	
BIGHEAD RIVER						89			4	4					2							5										104
BOAT LAKE - C																						2									2	
BOAT LAKE - D																						2									2	
BOGNOR MARSH - C						6																									6	
BOGNOR MARSH - D	3	11		4		458			2		1		8	2									5	2						93	589	
CLENDENAN			2			1			1																					5	9	
EUGENIA FALLS	2	6				2			4											2	2										18	
FISHING ISLANDS - C																							2								2	
FOUR CORNERS						3																									3	
GIBRALTAR					1	4			25																						30	
HEPWORTH	5	34	15	1		3													14		7							2		1	82	
HIBOU																							35								35	
INDIAN FALLS			1			1			1																					4	7	
INGLIS FALLS	3	7	11	1		70	10		23	1		7		4			1		50	7	3	20								34	252	
KEMBLE MOUNTAIN - B																														2	2	
KEPPEL FOREST			4			3																									7	
KOLAPORE UPLANDS	5	2		19	2	92			21									1				2	1								145	
LEITH SPIT																							1								1	
LITTLE GERMANY		1	3	1	4	36		3	2				2											2					6		60	
MASSIE HILLS - A	3	6				277																	2							14	302	

MASSIE HILLS - B	1	7		14	4	174							1									2						9	212		
Property	Beech Bark Disease	Beech Scale Insect	Bell's Honeysuckle	Butternut Canker	Coltsfoot	Common Buckthorn	Common Privet	Dog Strangling Vine	Garlic Mustard	Goutweed	Gypsy Moth Caterpillar	Holly Leaved Oregon Grape	Invasive Honeysuckle Sp.	Japanese Barberry	Japanese Knotweed	Lamb's Ear	Lamium	Manitoba Maple	Morrow's Honeysuckle	Norway Maple	Oriental Bittersweet	Periwinkle	Phragmite / Common Reed	Purple Loosestrife	Reed Canary Grass	Scotch Pine	Silver Or White Poplar	Tartarian Honeysuckle	Tufted (cow) Vetch	Wild Chervil	Total by Property
PEASEMARSH																						7								7	
ROBSON LAKES - A						201							2																	203	
ROBSON LAKES - B		1				7																								8	
ROBSON LAKES - C		1	7	4		63																								75	
ROCKFORD						44								2								1								47	
ROCKLYN CREEK - A		1				81			6																			17	105		
SHALLOW LAKE - A						8																								8	
SHEPPARD LAKE						111																								111	
SINKHOLE									2																					2	
SKINNER McNAB - A		1				26			2															1						30	
SKINNER McNAB - B			3			4			1												1				1				17	26	
SKINNER McNAB - D		5	2		1	32			2												3								33	78	
SKINNER McNAB - E						5			1				2																	8	
SKINNER'S BLUFF - B		3		2		86							6			2					1								1	101	
SKY LAKE - B	1	2																												3	
SKY LAKE - C	1	24																												25	
SPEY RIVER - B		1				3								1																5	
SPEY RIVER - C		2				3																						2		7	
SYDENHAM FOREST	1	3		37		17							5																	63	
SYDENHAM LOWLANDS - B																													2	2	
TELFER CREEK	1	2			5	8																								16	

THE GLEN - A						4		2					6																		12
WALTER'S CREEK - B	1	4				25			2																						32
Property	Beech Bark Disease	Beech Scale Insect	Bell's Honeysuckle	Butternut Canker	Coltsfoot	Common Buckthorn	Common Privet	Dog Strangling Vine	Garlic Mustard	Goutweed	Gypsy Moth Caterpillar	Holly Leaved Oregon Grape	Invasive Honeysuckle Sp.	Japanese Barberry	Japanese Knotweed	Lamb's Ear	Lamium	Manitoba Maple	Morrow's Honeysuckle	Norway Maple	Oriental Bittersweet	Periwinkle	Phragmite / Common Reed	Purple Loosestrife	Reed Canary Grass	Scotch Pine	Silver Or White Poplar	Tartarian Honeysuckle	Tufted (cow) Vetch	Wild Chervil	Total by Property
WALTER'S CREEK (HOLLAND AF)						309							1														1		9		320
WEST ROCKS	2	1										1	4	1																	9
WEST ROCKS - D	1	2				93						1	62	27						1						4			1	2	194
WODEHOUSE - B						20																								3	23
WODEHOUSE - F	1					4																							1		6
WODEHOUSE - G						39																									39
Total by Species	31	127	48	83	17	2,412	10	5	99	5	1	9	99	38	2	2	1	1	64	10	17	32	55	4	1	4	1	2	18	238	3,436



Grey Sauble Authority Board of Directors

M O T I O N

DATE: August 24, 2022

MOTION #: FA-22-073

MOVED BY: _____

SECONDED BY: _____

WHEREAS, invasive plant species have negative impacts on the environment, economy, and society;

AND WHEREAS, the GSCA watershed is seeing an increasing number of invasive species annually and GSCA have been working to control invasive species on its properties;

THAT, the GSCA Board of Directors approve the Invasive Plant Species Strategy;

AND THAT, the GSCA Board of Directors approve, in principle, the recommendation that \$15,000 be put into the 2023 operating budget for GSCA to manage invasive species on GSCA properties as per Appendix B of the Strategy;



STAFF REPORT

Report To: Board of Directors
Report From: Michael Fry, Forestry Coordinator
Meeting Date: August 24, 2022
Report Code: 024-2022
Subject: Support for Canadian Coalition for Invasive Plant Regulation's (CCIPR) – Call to Action

Recommendation:

WHEREAS, invasive plant species have negative impacts on the environment, economy, and society;

AND WHEREAS, invasive species have become established within the GSCA watershed and a coordinated approach is needed to curtail their expansion and further introductions;

THAT, the GSCA Board of Directors offer support to the Canadian Coalition for Invasive Plant Regulation's Call to Action.

Strategic Initiative:

This item relates to GSCA's Strategic Plan Goal of 'Enhance GSC Land Management and Natural Heritage Preservation.'

Background/Discussion:

Invasive plant species are known to cause severe damage to the local environment and economy. GSCA has been working to control invasive plant species on its own lands and working with local groups and individuals to control them on private and public lands.

The Canadian Coalition for Invasive Plant Regulation (CCIPR) formed in the spring of 2022 with the objective to call on the Federal government to establish:

- Effective pre- and post-border invasive species risk assessments;
- Bans on the sale and movement of high-risk invasive plant species;
- Labelling to identify and educate the public about lower-risk invasive plants;
- A verifiable industry-wide Code of Conduct, and
- Public education including alternatives to invasive plants.

GSCA has been asked to support this group by lending its name to the CCIPR's Call to Action. The CCIPR's goal is to gather support from numerous groups to achieve a critical mass to influence public policy on invasive plant species in the horticultural and pet/aquarium trades.

Financial/Budget Implications:

This action will not cost GSCA any money. Staff will provide our logo and maintain contact with the group.

Communication Strategy:

None required at this time.

Consultation:

CAO

Tuesday, June 14, 2022

Tim Lanthier

Chief Administrative Officer
237897 Inglis Falls Road
Owen Sound, ON N4K 5N6

Dear Mr. Lanthier,

I am following up on my previous correspondence and asking that the Grey Sauble Conservation Authority endorse the objectives of CCIPR. We are simply asking your organization to lend its name to a **Call for Action**. At this time, we are trying to develop the critical mass necessary to influence public opinion so that policymakers will take action to stem the growing problem of invasive plant species in the horticultural and pet/aquarium trades.

CCIPR is calling for a nationally coordinated plan to curtail the sales of both terrestrial and aquatic invasive plants. Back in 2008, the Canadian Food Inspection Agency (CFIA) identified the horticultural trade as the primary pathway for the intentional introduction of invasive plants in Canada. Very little has been done to address this. We believe that this pathway should be narrowed if not closed.

Our objectives are to call on the government to establish:

- **Effective pre- and post-border invasive species risk assessments,**
- **Bans on the sale and movement of high-risk invasive plant species,**
- **Labelling to identify and educate the public about lower-risk invasive plants,**
- **A verifiable industry-wide Code of Conduct, and**
- **Public education including alternatives to invasive plants.**

These objectives are consistent with priority actions set forth by the Federal-Provincial-Territorial Invasive Alien Species Task Force in 2017. That task force identified the need to **improve National Leadership and Coordination** of IAS Actions in Canada and to **focus on a policy/legislative framework** for key pathways. ([Recommendations to Improve INVASIVE ALIEN SPECIES Prevention and Management in Canada](#)).

Canadian Coalition for Invasive Plant Regulation

In the short term, we are working on networking and bringing the problem of invasive alien plants in the horticultural and pet/aquarium trade to the attention of the public and elected officials. We continue to build educational resources on our website and have highlighted models being implemented by the states bordering Canada to manage this growing problem. In the long term, we would like to see a substantive Canadian model developed. **More than cooperative accords and agreements** are needed. We recognize setting up improved assessment procedures and coordinating regulatory actions across provinces and territories is a multiyear task. But it is urgent that the task is begun.

Our coalition has only recently formed. It has evolved from a simple proposal from **Master Gardeners of Ontario** to address invasive plants in the marketplace. When we invited members of the public to join our task force, the endeavour blossomed. Volunteer members from various organizations, like the Credit Valley Conservation Authority, have joined our strategic team. Other organizations are partnering with us to help with outreach. For instance, the Georgian Bay Biosphere Reserve has offered to assist with local partnerships and Ontario Nature is helping to “watch for opportunities where we can support and amplify through our communications channels.” Other organizations, like Beausoliel First Nations, support our objectives but do not have the capacity to help beyond lending their name. We are grateful for those who can **support** this endeavour, for **partners** who can help us spread the word, and for **team members** who can help to improve our message and shape our strategy.

Public demand increases the likelihood that governments will prioritize action on invasive plants. Adding **Grey Sauble Conservation Authority** to our growing number of supporters can help us to build recognition of the importance of the issue. Please let us know if your organization supports our efforts and or would like to be more substantially involved.

Best Regards,
Cathy Kavassalis
Team Coordinator
CCIPR.ca
MGOI.ca





Grey Sauble Authority Board of Directors

M O T I O N

DATE: August 24, 2022

MOTION #: FA-22-074

MOVED BY: _____

SECONDED BY: _____

WHEREAS, invasive plant species have negative impacts on the environment, economy, and society;

AND WHEREAS, invasive species have become established within the GSCA watershed and a coordinated approach is needed to curtail their expansion and further introductions;

THAT, the GSCA Board of Directors offer support to the Canadian Coalition for Invasive Plant Regulation's Call to Action.



Grey Sauble Authority Board of Directors

M O T I O N

DATE: August 24, 2022

MOTION #: FA-22-075

MOVED BY: _____

SECONDED BY: _____

THAT the Grey Sauble Conservation Authority Board of Directors proceed into closed session at X:XX pm to discuss matters related to the following:

- i. Minutes of the Closed Session of the Regular Board of Directors meeting held on July 27, 2022; and,**
- ii. To discuss an item related to “a position, plan procedure, criteria or instruction to be applied to any negotiations carried on or to be carried on by or on behalf of the Authority”.**

AND FURTHER THAT CAO, Tim Lanthier, Administrative Assistant, Valerie Coleman, and Gloria Dangerfield, Manager of Information Services will be present.



Grey Sauble Authority Board of Directors

M O T I O N

DATE: August 24, 2022

MOTION #: FA-22-076

MOVED BY: _____

SECONDED BY: _____

THAT the Grey Sauble Conservation Authority Board of Directors resume open session.



Grey Sauble Authority Board of Directors

M O T I O N

DATE: August 24, 2022

MOTION #: FA-22-077

MOVED BY: _____

SECONDED BY: _____

THAT the Grey Sauble Conservation Authority Board of Directors approve the July 27, 2022 Closed Session minutes as presented in the closed session agenda.



Grey Sauble Authority Board of Directors

M O T I O N

DATE: August 24, 2022

MOTION #: FA-22-079

MOVED BY: _____

SECONDED BY: _____

THAT this meeting now adjourn.