

May 26, 2023

**Notice of Conservation Land Disposal: Severance of 0.10 ha at Oxenden Creek Conservation Area (PLAN 483 PT LOT 5)**

The Grey Sauble Conservation Authority will be disposing of 0.10 ha (0.25 acres) of land at the Oxenden Creek Conservation Area (Plan 483, Pt Lot 5) located in the Township of Georgian Bluffs. The 0.10 ha will be severed and transferred to the neighbouring property at 126 Old Mill Rd. This area is being transferred to rectify a historical boundary issue. The retained acreage will remain as a Conservation Area.

Oxenden Creek Conservation Area is largely forested with a section of Oxenden Creek (Gleason Brook) running through. There is a small parking area and open space off Old Mill Rd. This property was acquired in 1970 with the purpose of protecting important spawning grounds for Chinook Salmon and Rainbow Trout. The entire property is listed as flood and erosion hazard.

As per Section 21(4) of the Conservation Authorities Act, GSCA is required to post this notice for 45 days, resulting in a disposal date of July 10, 2023. The current use of the area to be severed is a workshop and septic system, which will continue as the land use.

Any comments or questions on this disposal can be directed to the below contact.

Regards,



Rebecca Anthony  
Manager of Conservation Lands  
519-376-3076  
[r.anthony@greysauble.on.ca](mailto:r.anthony@greysauble.on.ca)

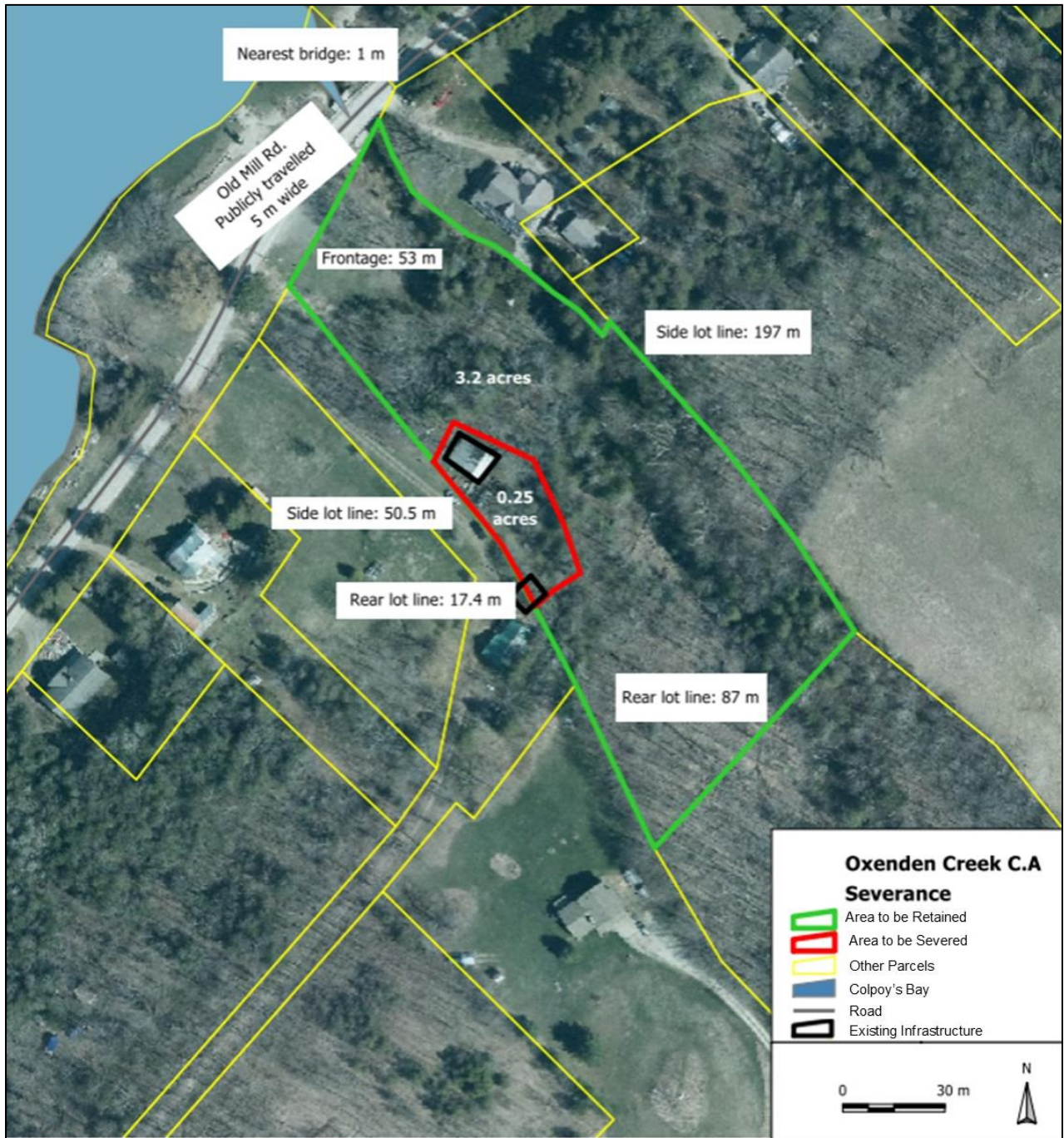
Cc. Ms. Sue Carleton, Chair, Grey Sauble Conservation Authority  
Cc. Ms. Tobin Day, Director for Georgian Bluffs, Grey Sauble Conservation Authority  
Cc. Conservation Authorities and Natural Hazards Section, Resources Planning and Development Policy Branch, Ministry of Natural Resources and Forestry

---

**Member Municipalities**

Municipality of Arran-Elderslie, Town of the Blue Mountains, Township of Chatsworth, Township of Georgian Bluffs, Municipality of Grey Highlands, Municipality of Meaford, City of Owen Sound, Town of South Bruce Peninsula

ATTACHMENT 1. Map of Oxenden Creek Conservation Area and Disposal Area



Grey Sauble Conservation (GSC) makes regular edits to regulation and base data mapping based on the most current information. By using and/or downloading this data the user agrees to inform GSC of any errors in the mapping. All of the included mapping is made available "AS IS", "AS AVAILABLE", and "WITH ALL FAULTS" without representations or warranties of any kind, either express or implied, as to the accuracy, completeness, reliability, currency, merchantability, fitness for purpose, title or otherwise. The entire risk as to the results and performance of the Map Products, IP, Data and Third Party Data is assumed by the user. The user shall indemnify and save harmless the GSC, its directors and officers, its representatives and employees, and Third Parties (collectively, the "Indemnitee") from and against any and all liabilities, damages, costs or expenses awarded against or incurred or suffered by the Indemnitee arising out of any action or proceeding commenced or maintained by any entity in respect of the users use of the Maps, Data, IP or Third Party Data.

Produced by GSC with Data supplied under Licence by Members of the Ontario Geospatial Data Exchange. © King's Printer for Ontario and its licensors. [2023] May Not be Reproduced without Permission. THIS IS NOT A PLAN OF SURVEY. The use of these Data does not constitute an endorsement by the MNR or the Ontario Government of use of such Data. By accepting this data you are agreeing not to edit this data. You also agree to inform GSC of any errors in mapping or missing base features that you are aware of.

