

Wodehouse Management Area – Compartment 190

Concession 7, Part Lot 10 and South Part Lot 11, Municipality of Grey Highlands (former Euphrasia Township), Grey County.

Wodehouse Management Area (Compartment 190) was closed on March 6, 2025, for a scheduled harvest operation. While the initial reopening of this property was anticipated for April 1, 2025, the operation has been paused due to warm weather, which can increase the potential for site damage.

The new expected reopening date is October 1, 2025. For public safety, this property will remain closed during this time.

The goal of Grey Sauble Conservation Authority's (GSCA) Forest Management Program is to maintain healthy, diverse forest ecosystems which will provide many environmental, ecological, social and cultural benefits. The harvest operation, identified in our Forest Management Plan, will involve removal of trees to improve and maintain the health of the residual forest. The trees to be removed are carefully selected based on their vigour and quality. Wildlife habitat features such as stick nests, cavity trees and mast trees area retained to provide food and shelter for wildlife.

Wood from this harvest will provide lumber, renewable energy, and firewood. Revenues generated by this operation support the conservation efforts of GSCA and the local economy.

The results of this forestry operation will be a healthy, diverse ecosystem that provides forest products, valuable wildlife habitat and recreational opportunities for the residents of our watershed.

This operation is consistent with GSCA's mandate to further the conservation, restoration, development and management of natural resources.

For further information about this closure and the stand improvement operation please contact GSCA at 519-376-3076 or email us at forestry@greysauble.on.ca.

Member Municipalities

Municipality of Arran-Elderslie, Town of the Blue Mountains, Township of Chatsworth, Township of Georgian Bluffs, Municipality of Grey Highlands, Municipality of Meaford, City of Owen Sound, Town of South Bruce Peninsula



Appendix A

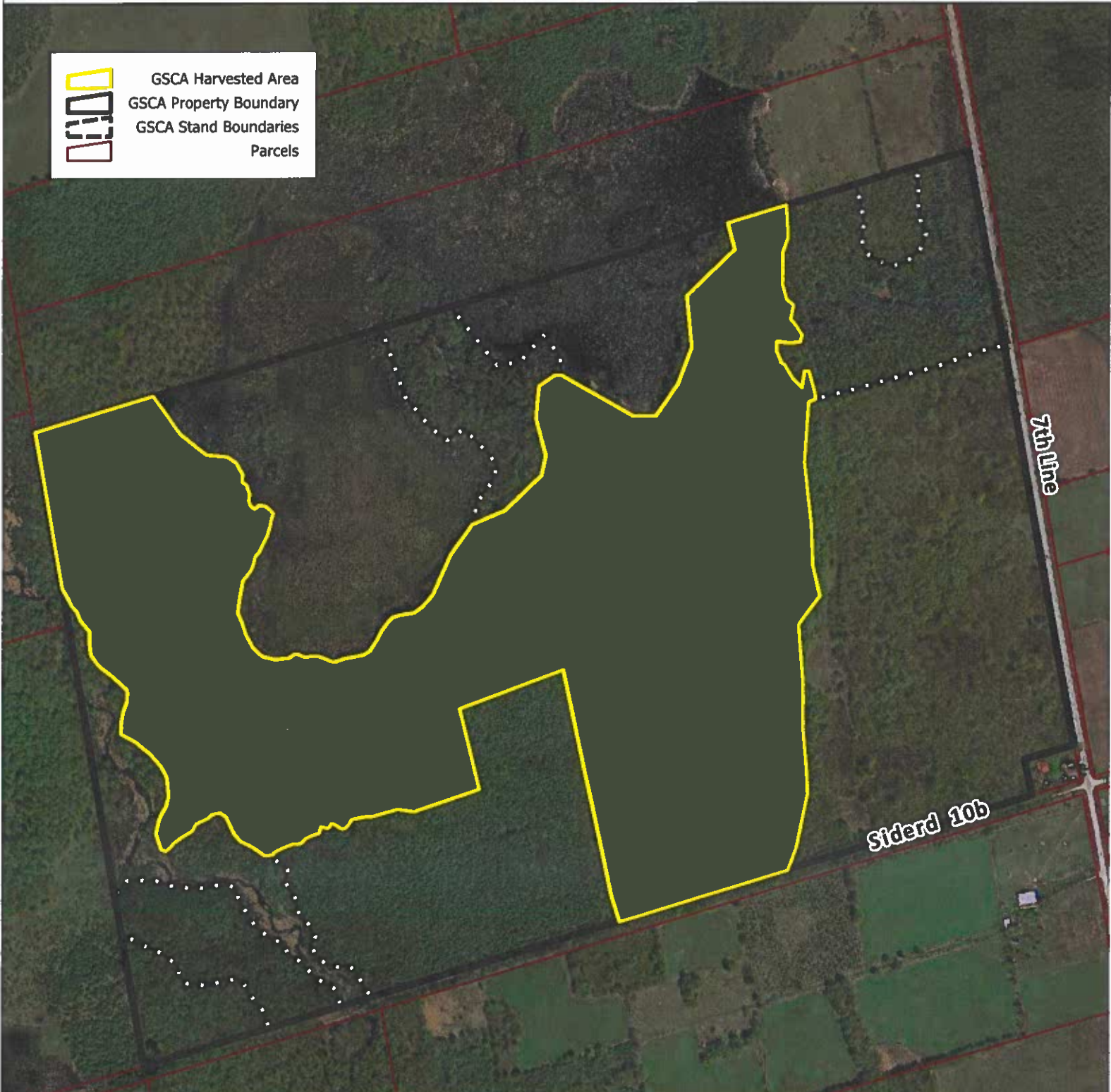
Wodehouse Management Area - Compartment 190

Proposed Harvest Areas



Comp	Assessment Roll #	Lot	Concession	Municipality	Former Twp	County
190	420839000906200	PT. 10, S Pt. 11	7	Municipality of Grey Highlands	Euphrasia	Grey

 GSCA Harvested Area
 GSCA Property Boundary
 GSCA Stand Boundaries
 Parcels



By accepting this map you agree not share or edit the map or disclaimer and YOU ARE BOUND TO THE CONDITIONS IN THE FULL DISCLAIMER PROVIDED AT www.greysauble.on.ca/disclaimer.pdf. Produced by GSCA containing Data supplied under Licence by Members of the Ontario Geospatial Data Exchange. The use of these Data does not constitute an endorsement by the Ministry of Natural Resources & Forestry or the Ontario Government of use of such Data. Aerial Imagery provided by GSCA under Licence with the Ontario MNR (SWOOP 2020, SWOOP 2015). May Not be Reproduced without Permission. THIS IS NOT A PLAN OF SURVEY. Contains Material of the © King's Printer for Ontario [2024].

1:7500